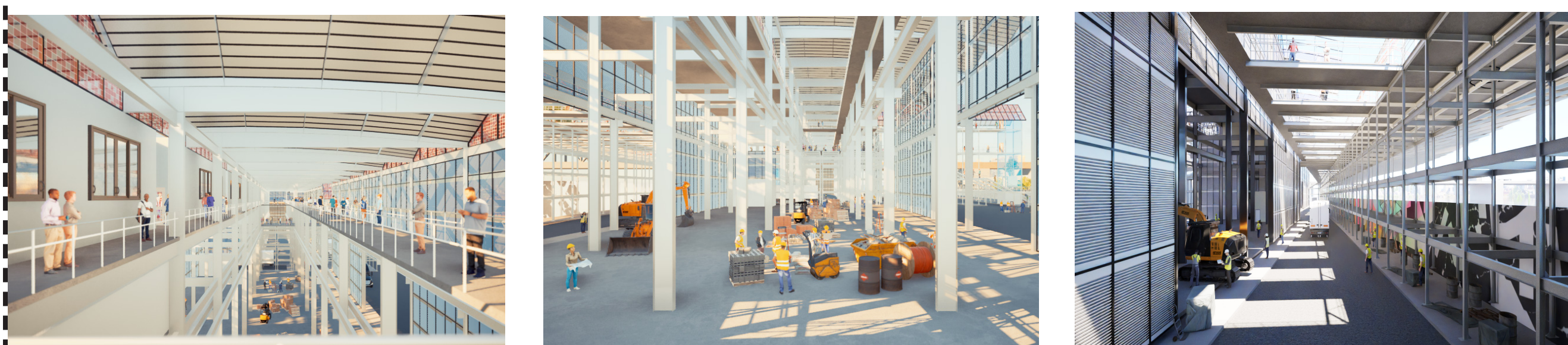
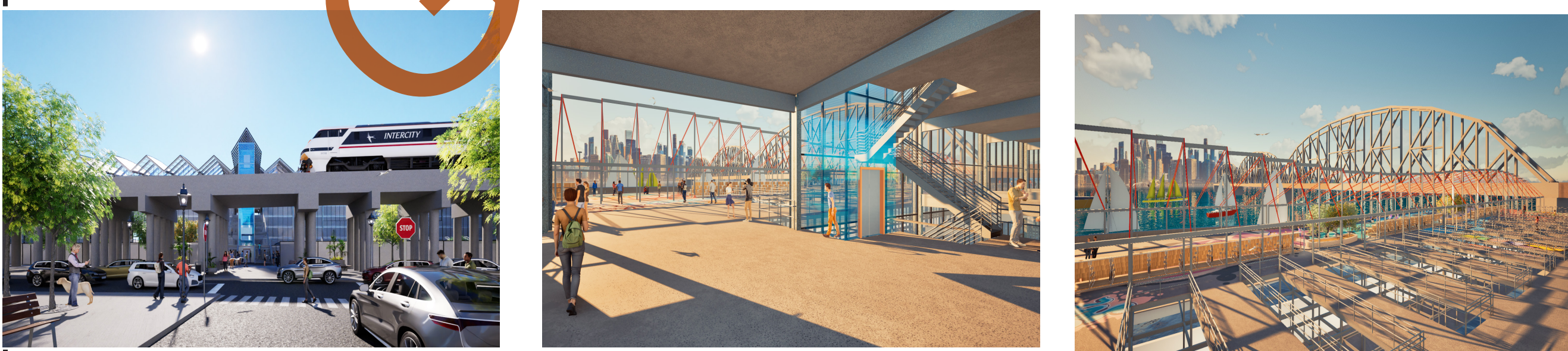
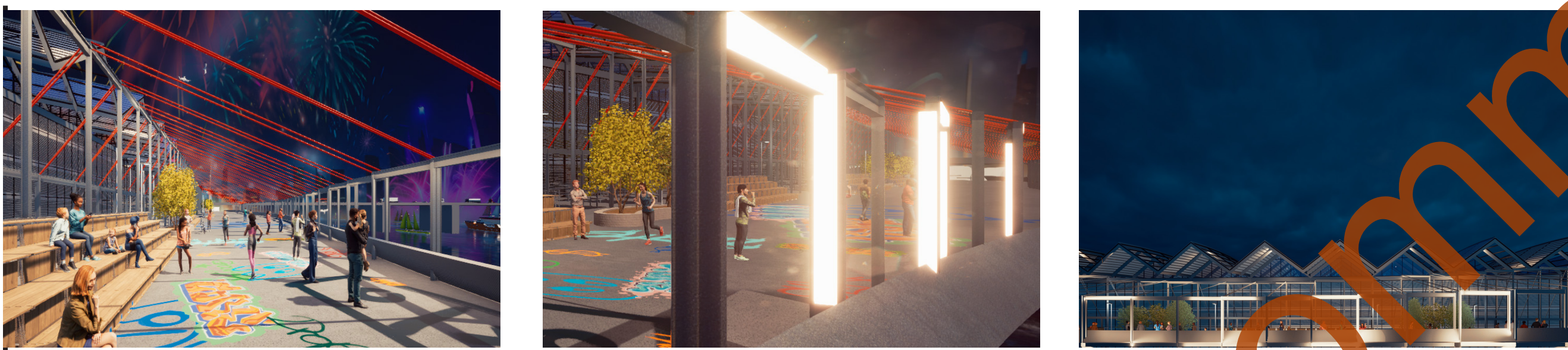
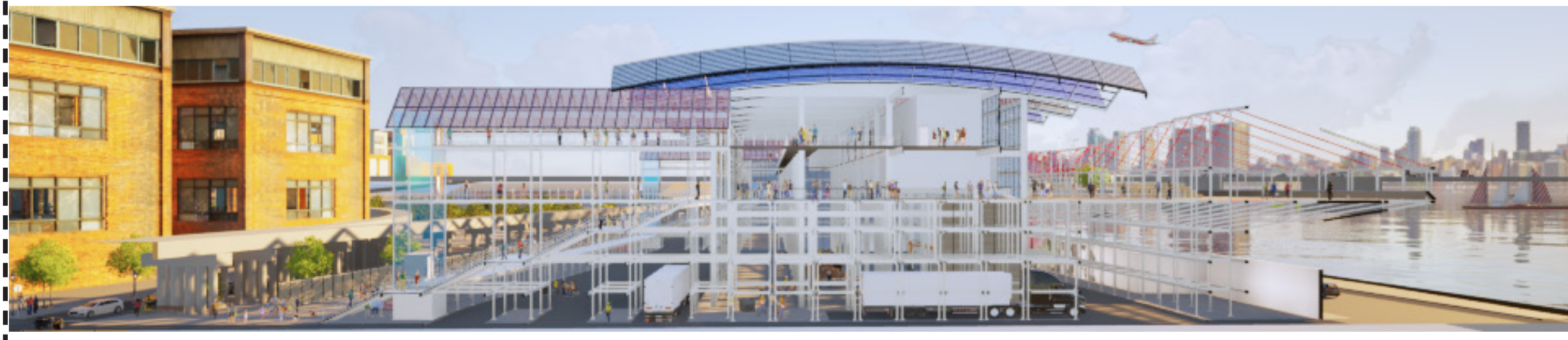


The Harbor Of Innovation

Michelle Perez

ARCH 135 | Instructor: Paul Chiu



Full Description of the project:

The project is to design a Steel Innovation Center on a unique site location in downtown St. Louis, MO. The current site, with its deserted atmosphere, is like an orphan, detached from the St. Louis Gateway Arch tourist attraction and the urban texture. However, it also boasts a unique view of the Mural Mile and the majestic Mississippi River, which are unattractive to visitors or connected to pedestrians. The site is part of the Construction Innovation District & Master Development located south of the Gateway Arch. Program spaces include exhibition, fabrication, training, and community outreach.

Concept:

The design concept of the Steel Innovation Center is to reunite the site back to the city fabric with neighborhood engagement, a solidly built modular system with integrated sustainable solutions aiming to promote this facility as a destination for the new Mural Mile, energy-saving strategies, and leisure activities.

Neighborhood Engagement:

The Steel Innovation Center is not just a building but a community project. We have prioritized neighborhood engagement, developing a master plan that reunites the site with the city and defines the private and public access to the building design. This emphasis on community involvement ensures that the project is not just about the building but about the people it serves.

Architecture, Engineering, and Construction Industry:

The solidly built modular system comprises four types of steel modules, which together demonstrate each module's functions.

Sustainable Solutions:

The integrated sustainable solutions consist of five elements: The primary building material, the photovoltaic modular panels on the pitched roof facing South, the Skylight on the pitched roof facing North, the louver panel façade of the building, and the rainwater collection and recycling treatment.

Local and Global Impact:

By promoting this facility as a destination, the designated guest tour circulation inside the building promotes energy-saving strategies, sharing knowledge and best practices to prepare people for global practice. Then, bring the neighborhood from the city to the shoreline walk to experience the new mural mile and leisure activities with the majestic view of the Mississippi River.

