

GLENDALE COMMUNITY COLLEGE

ARCHITECTURE PORTFOLIO

MANIA MINASVAND



SKILLS



REVIT



AUTOCAD



PHOTOSHOP



TWINMOTION



LASER CUTTING



MODEL BUILDING

ACHIEVEMENTS

CANDIDATE FOR JRD SCHOLARSHIP 2023

WIDOM SCHOLARSHIP RECIPIENT 2023

WOODBURY PLATFORM 2023

AIA 2x8 2022

GCC NEWSPAPER-GCC
STAYINGCONNECTED APRIL 2022

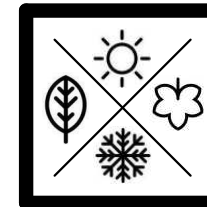
BUILDNER (BEE BREEDERS)
2022

CCCAP 2021

20X20 WOODBURY
PLATFORM 2021

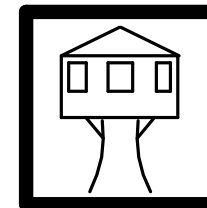
AIA 2X8 DOMUN 2020

CONTENTS



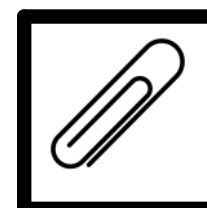
ALL SEASON

MIX-USE PROJECT / LITTLE TOKYO



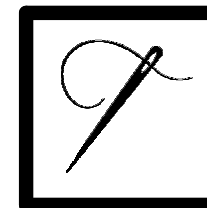
THE TREE HOUSE

MIX-USE PROJECT / MACARTHUR PARK



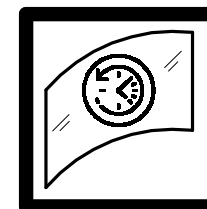
THE PAPER CLIP HOUSE

HOME FOR THE BLIND



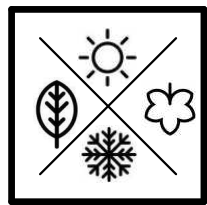
SANCTUARY

COMMUNITY RESOURCE CENTER



JANUS MOMENTS CHAMBER

RESIDENTIAL PROJECT / SENIOR HOUSING



ALL SEASON

MIX-USE PROJECT / LITTLE TOKYO - ARCH 130

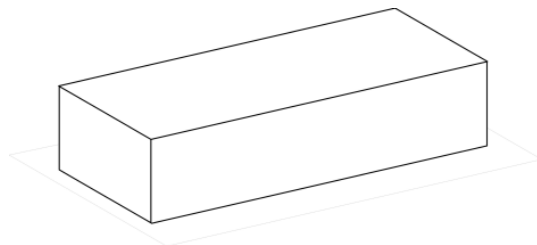
23S S. LOS ANGELES ST,
LOS ANGELES, CA

CREATE OPEN SPACE FOR THE PUBLIC WITHIN THE URBAN FABRIC

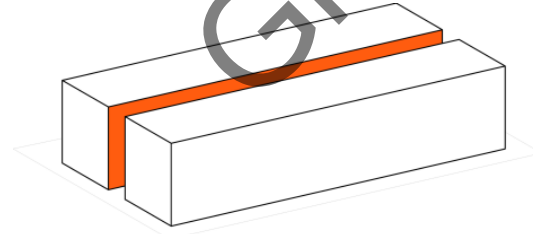
THE OPEN SPACE IS CREATED BY REARRANGING PROGRAMS TO FORM THE NEGATIVE SPACE FOR PEOPLE TO USE WITH A SEASONAL THEME ECHOING THE OPEN SPACE AT THE ROCKEFELLER CENTER IN NYC



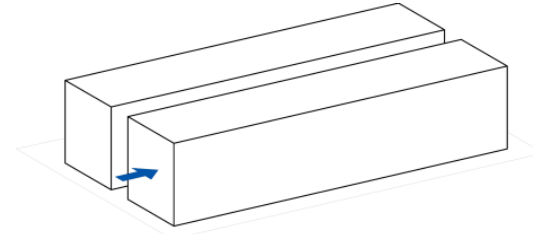
CONCEPTUAL DIAGRAM



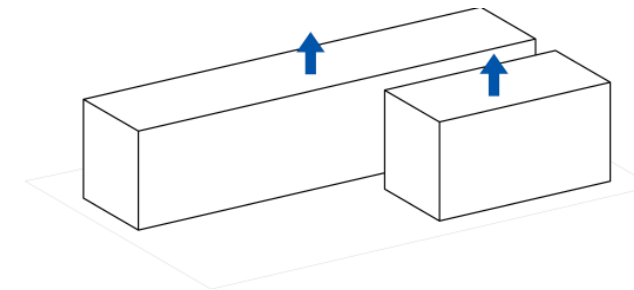
MASS VOLUME



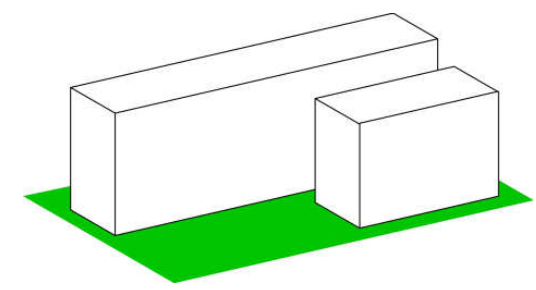
SPLITTING THE SINGLE MASS



PUSHING BACK THE SPLITTED MASS

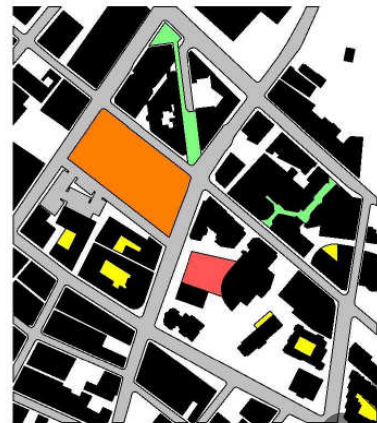
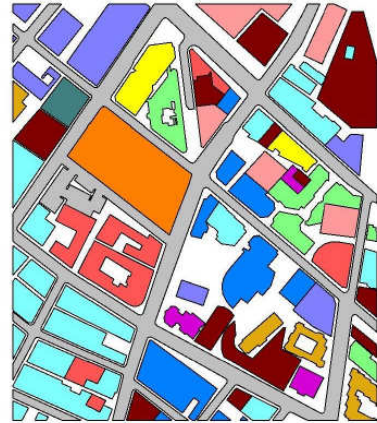
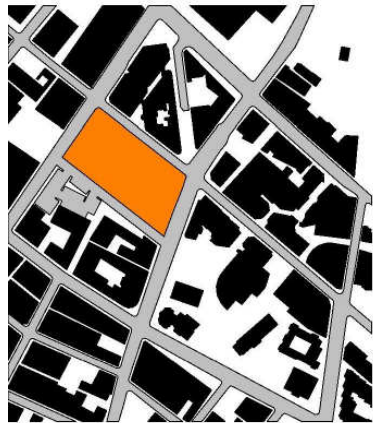


PUSHING UP TO BUILD TYPICAL VERTICAL MASS



THE WHOLE MASS CREATES OPEN SPACE FOR ALL SEASON CONCEPT

EXISTING CONDITION DIAGRAMS OF LITTLE TOKYO SITE



LEGEND:

- PROJECT LOCATION

- RETAIL/APARTMENT MIX-USE
- HOTEL
- RETAIL
- MUSEUM / CIVIC BUILDING
- OFFICE BUILDING
- PARKING LOT

LEGEND:

- PARKING STRUCTURE
- APARTMENT
- CHURCH/TEMPLE
- RESTAURANT
- LIBRARY

LEGEND:

- RETAIL SHOPPING OPEN SPACE
- APARTMENT OPEN SPACE
- MUSEUM PLAZA
- PLAZA



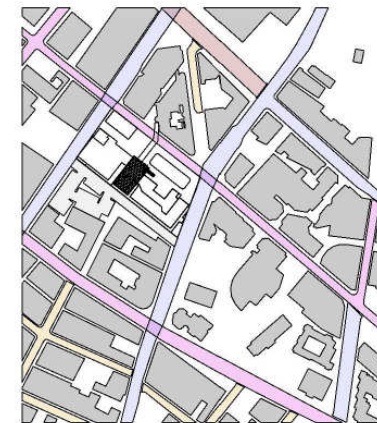
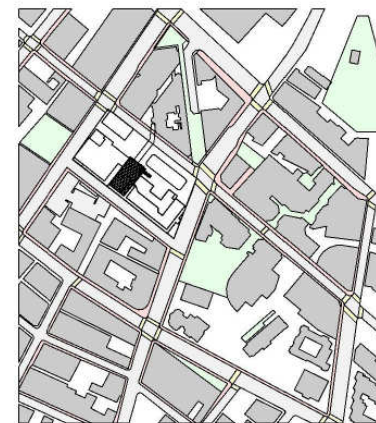
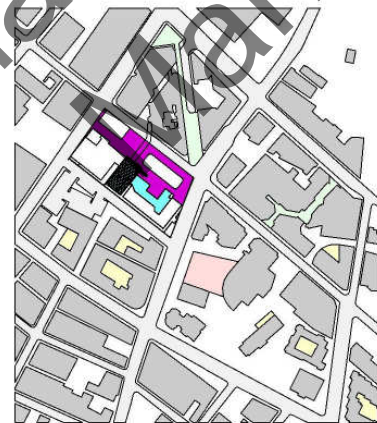
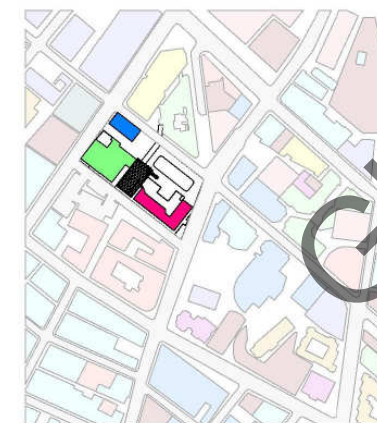
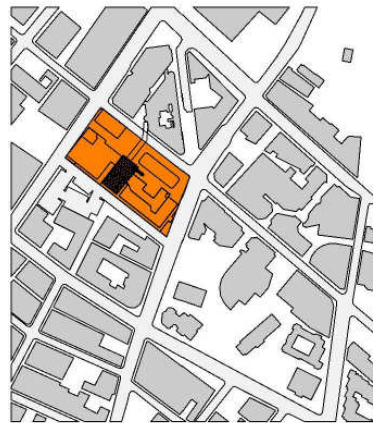
LEGEND:

- SIDE WALK
- CROSS WALK
- PEDESTRIAN ACCESS AREA

LEGEND:

- TWO LANES
- THREE LANES
- FOUR LANES
- FIVE LANES

PROPOSED DESIGN DIAGRAMS OF LITTLE TOKYO SITE



LEGEND:

- PROJECT LOCATION

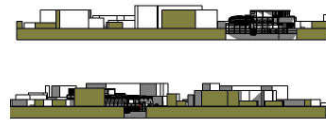
- RETAIL/APARTMENT MIX-USE
- HOTEL
- RETAIL
- MUSEUM / CIVIC BUILDING
- OFFICE BUILDING
- PARKING LOT

LEGEND:

- PARKING STRUCTURE
- APARTMENT
- CHURCH/TEMPLE
- RESTAURANT
- LIBRARY
- FOOD COURT

LEGEND:

- RETAIL SHOPPING OPEN SPACE
- APARTMENT OPEN SPACE
- MUSEUM PLAZA
- PLAZA
- OPEN SPACE
- FOOD COURT OPEN AREA



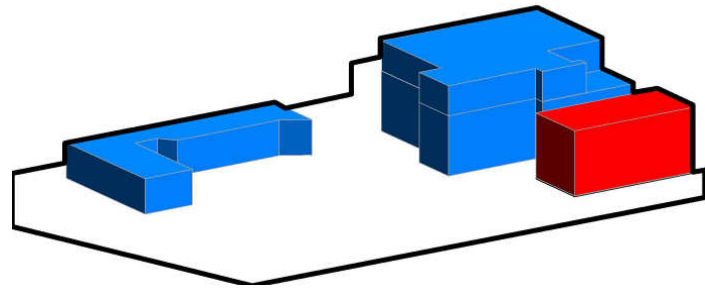
LEGEND:

- SIDE WALK
- CROSS WALK
- PEDESTRIAN ACCESS AREA

LEGEND:

- TWO LANES
- THREE LANES
- FOUR LANES
- FIVE LANES

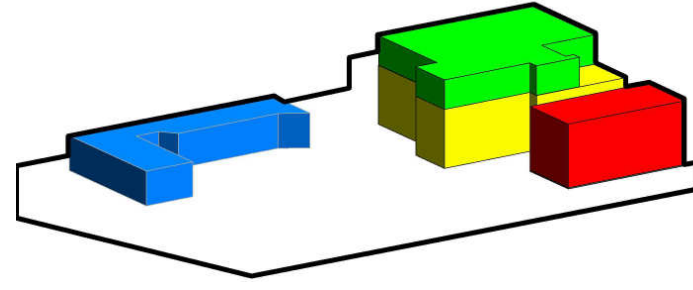
PROGRAM DIAGRAM



LEGEND:

- PUBLIC
- PRIVATE

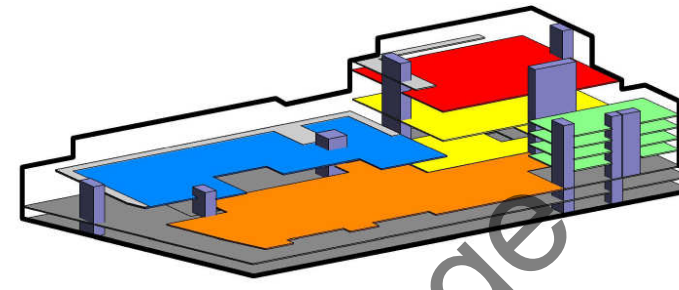
PROGRAM DIAGRAM



LEGEND:

- OFFICE
 - FAST FOOD
 - RETAIL
 - RESTAURANT
- PRIVATE
PUBLIC

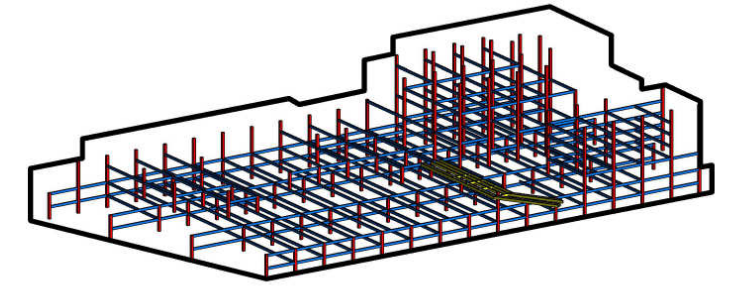
VERTICAL AND HORIZONTAL CIRCULATION



LEGEND:

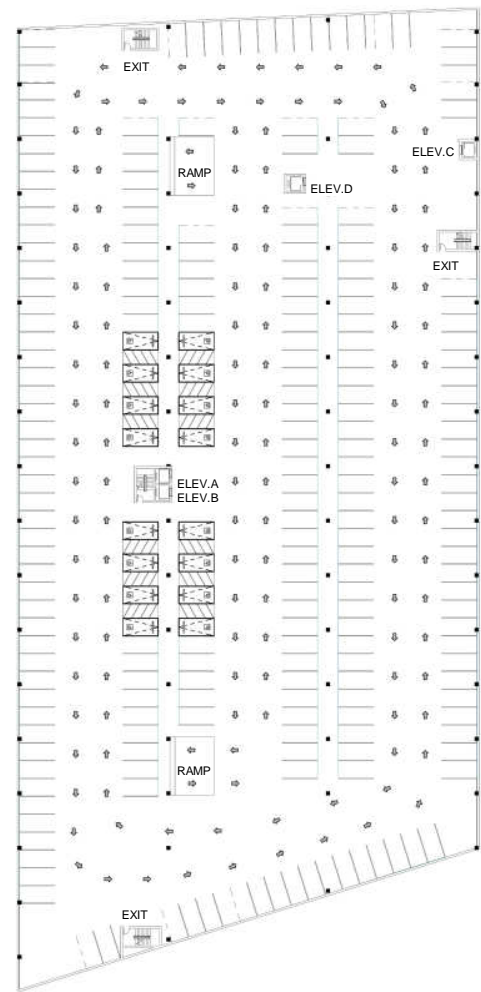
- FAST FOOD AREA FLOOR
- RESTAURANT FLOOR
- RETAIL FLOOR
- OFFICE FLOOR
- PARKING FLOOR
- SERVICE CORRIDOR
- VERTICAL CIRCULATION
- OPEN TO SKY

STRUCTURAL DIAGRAM

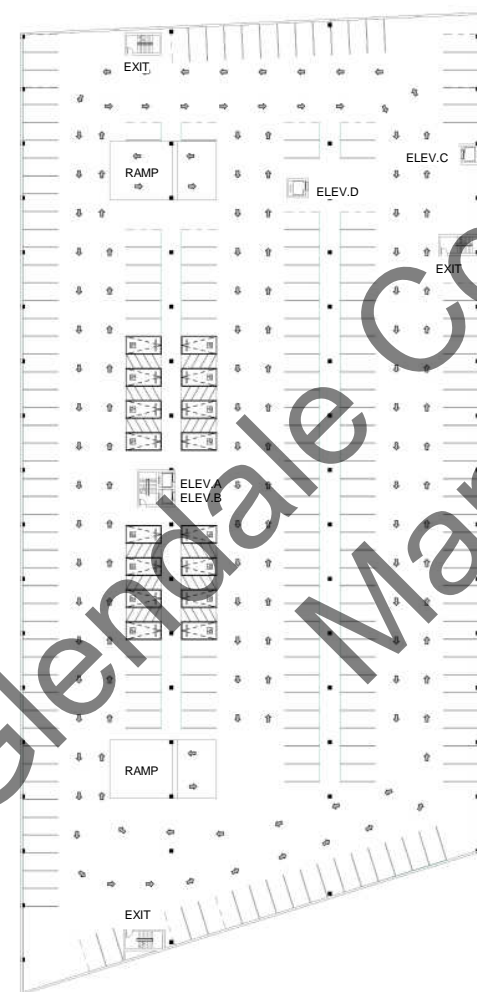


LEGEND:

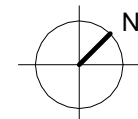
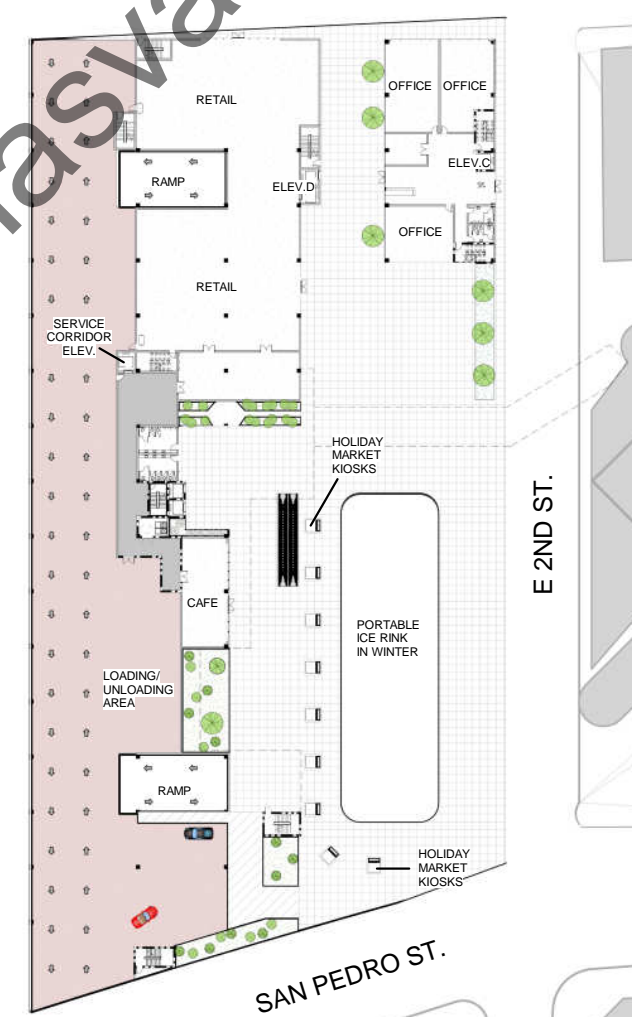
- COLUMN
- BEAM
- BRIDGE SUPPORT



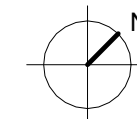
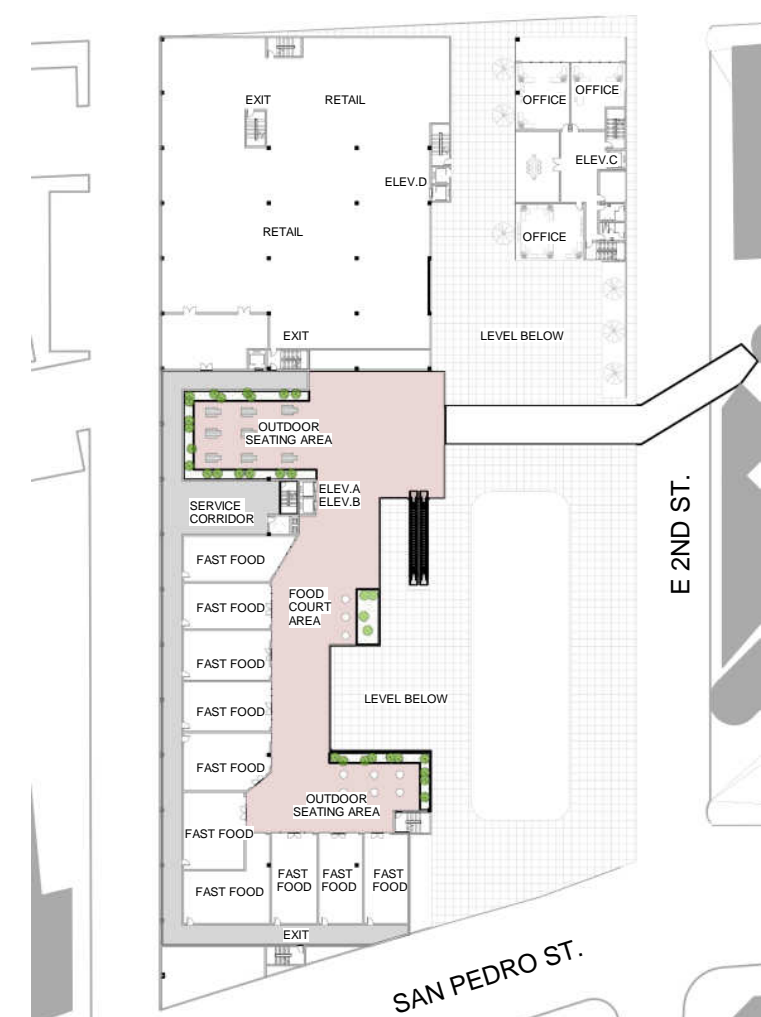
UNDERGROUND PARKING LEVEL 2



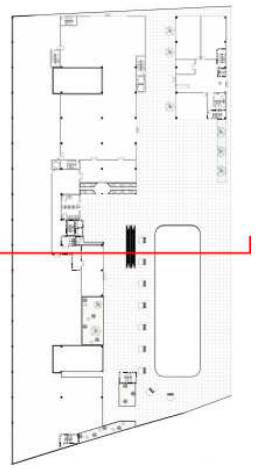
UNDERGROUND PARKING LEVEL 1



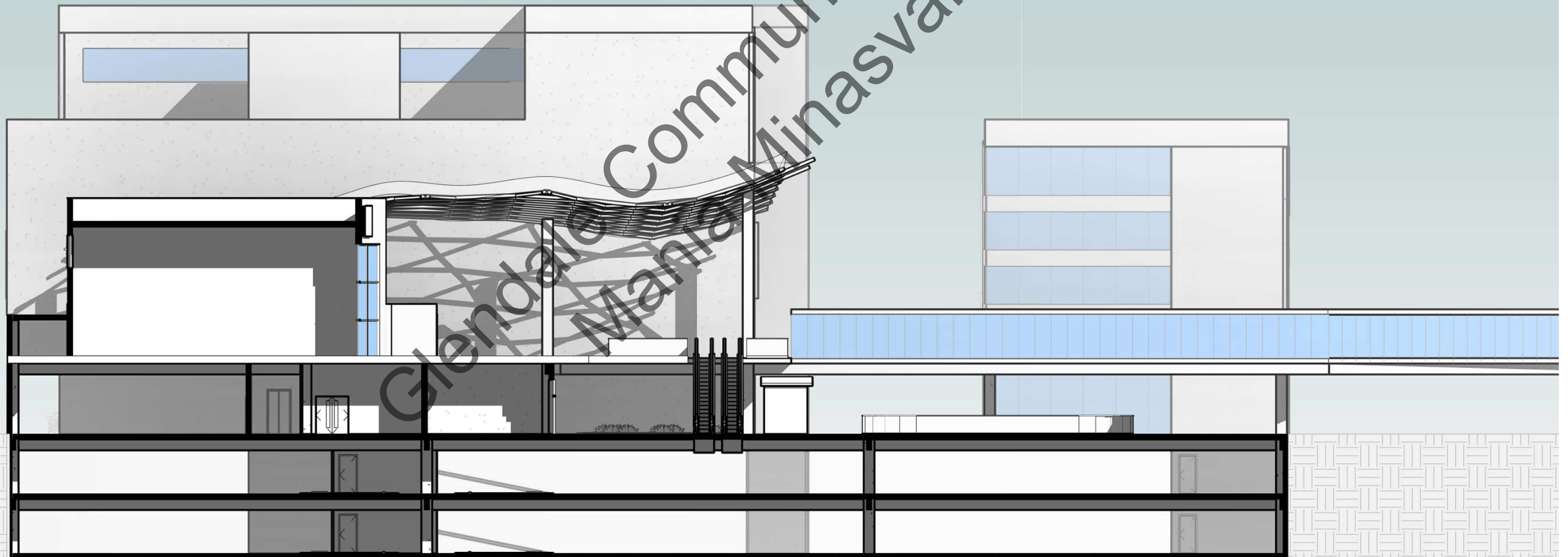
FIRST FLOOR PLAN



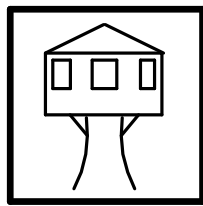
SECOND FLOOR PLAN



Glendale Community College
Mania Minasvand







THE TREE HOUSE

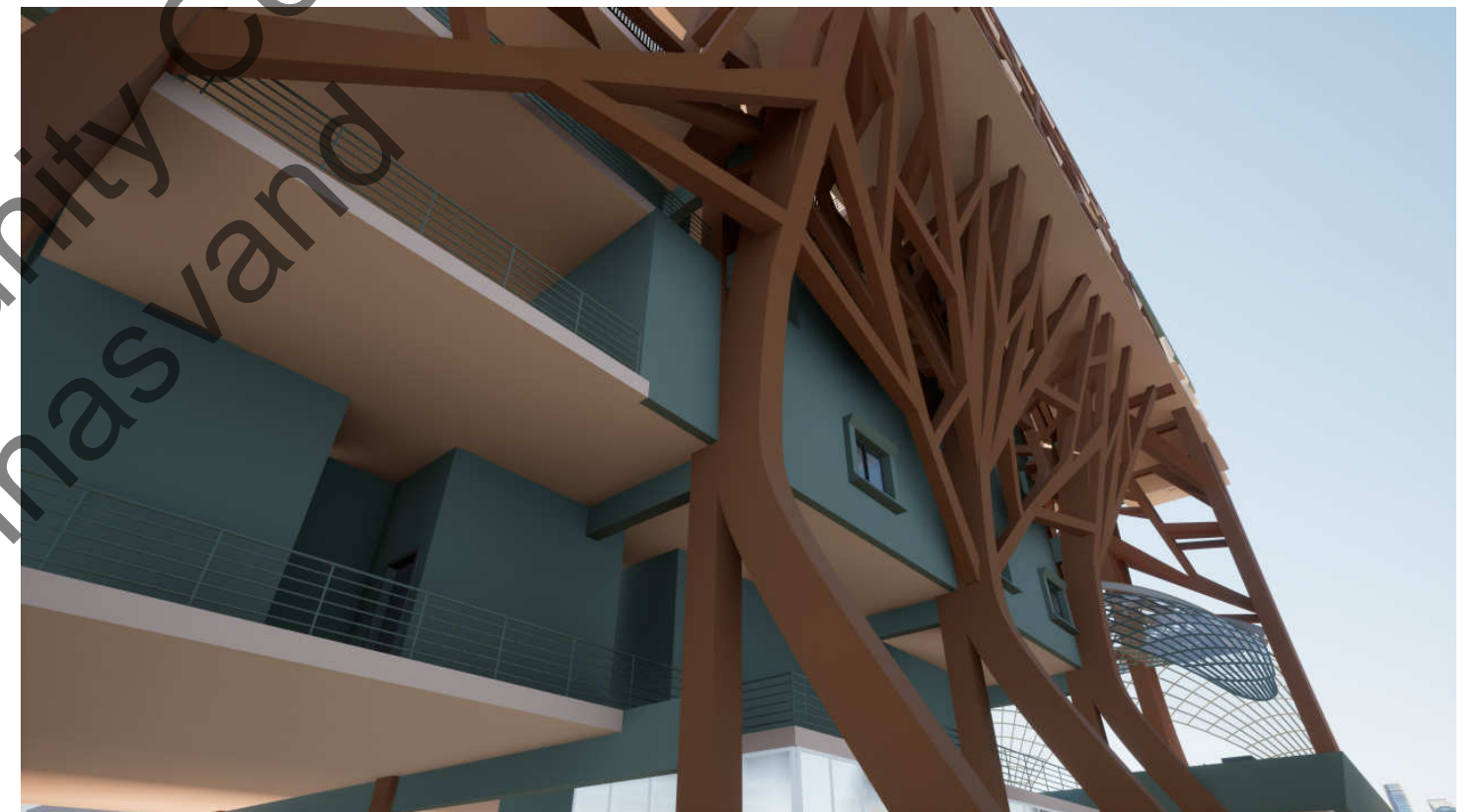
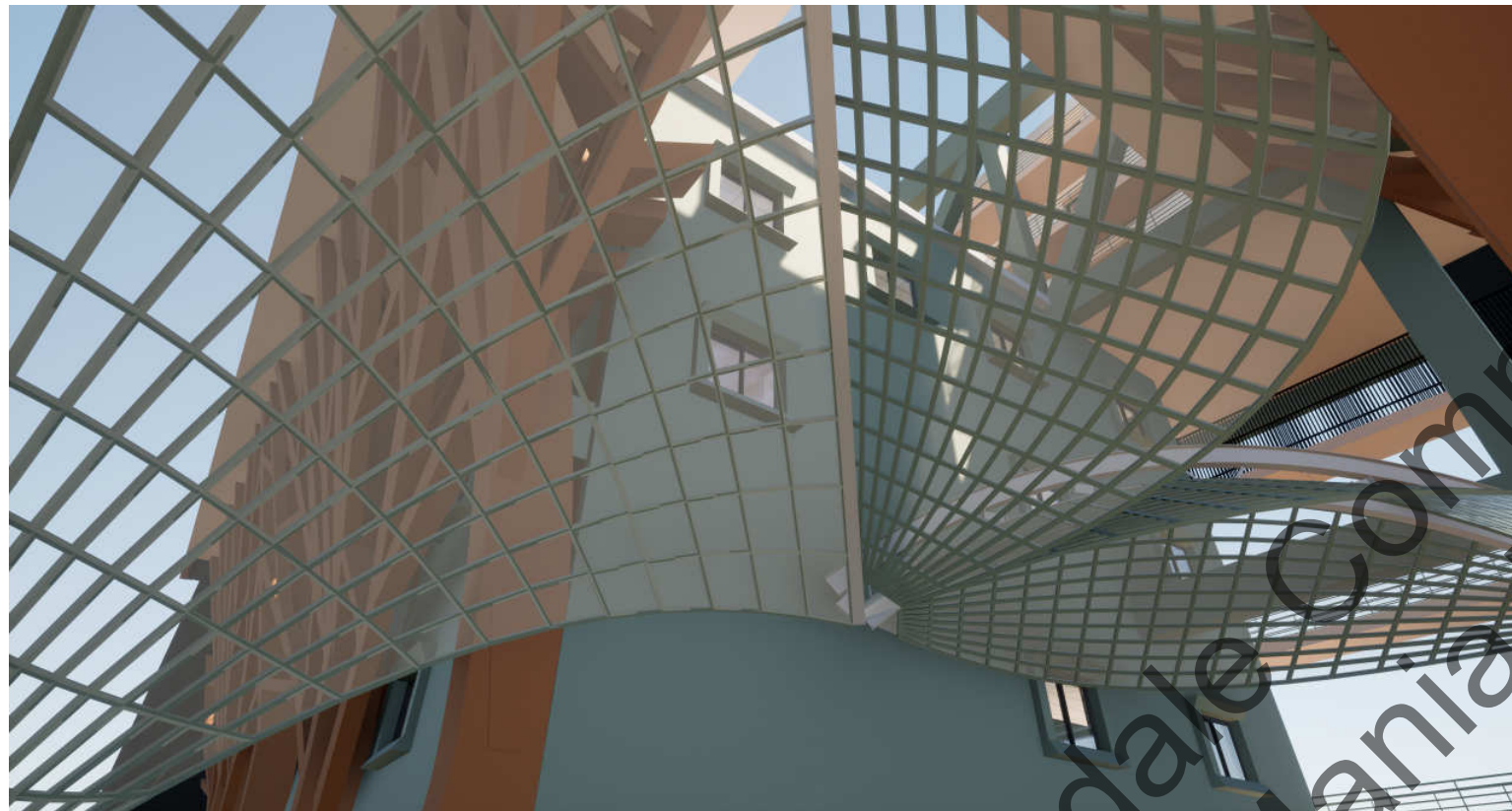
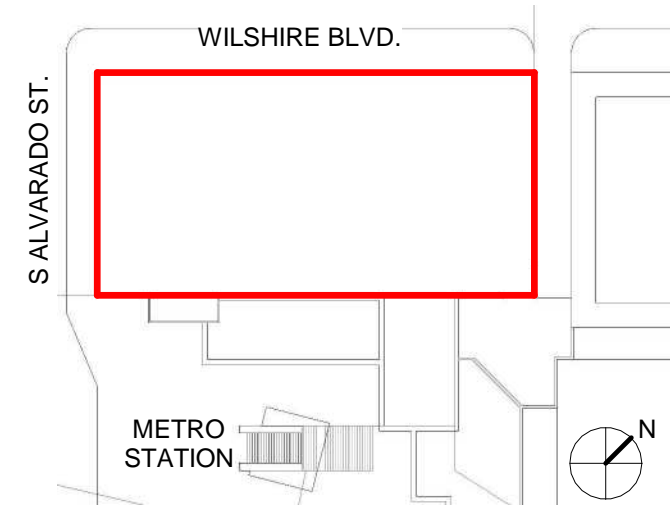
MIX-USE PROJECT / MACARTHUR PARK - ARCH 135

650 S. ALVARADO ST
LOS ANGELES, CA

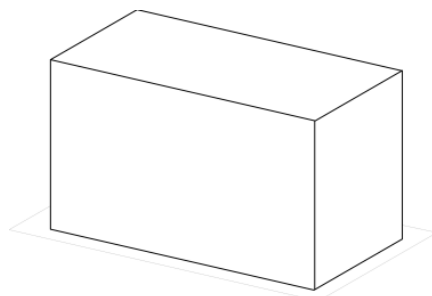
TREE HOUSE ACROSS THE CITY PARK

EXPOSED VERTICAL AND HORIZONTAL STRUCTURE OF THE BUILDING TO MIMIC TREE BRANCH AND LIGHTWEIGHT CANOPY STRUCTURES FOR LONGSPAN ENCLOSURE TO IMITATE LEAVES OF THE TREE

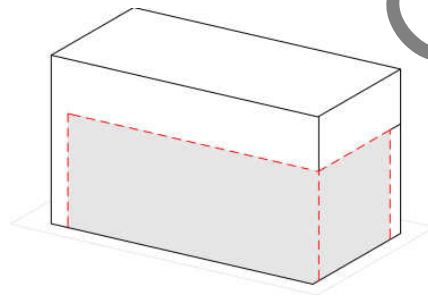
MACARTHUR
PARK



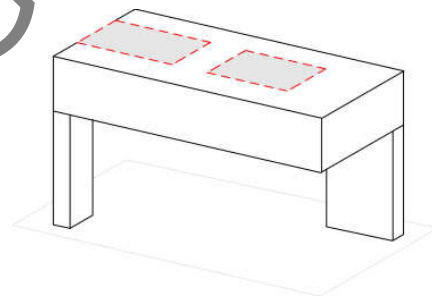
CONCEPTUAL DIAGRAM



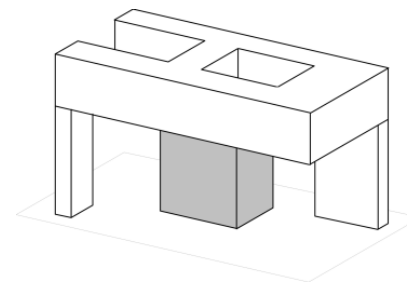
MASS VOLUME



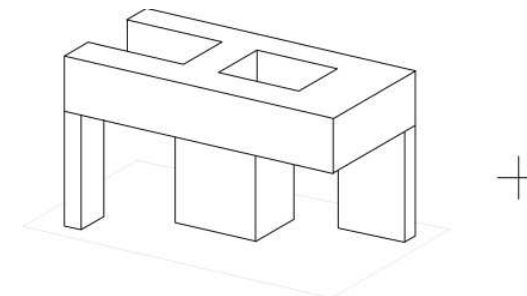
SHAPING OF VOLUME BY
CREATING A VOID



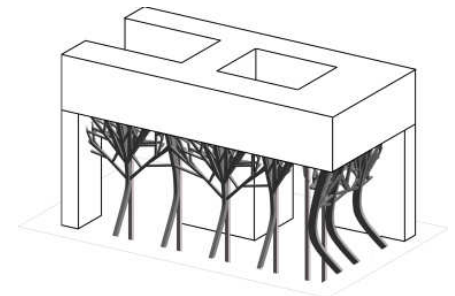
SHAPING OF VOLUME BY
CREATING A VOID



ADDING THE CORE IN
THE MIDDLE

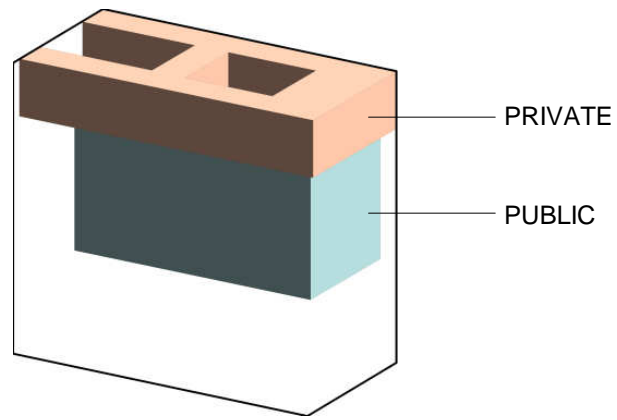


BRINGING SUPPORT AND GREENERY

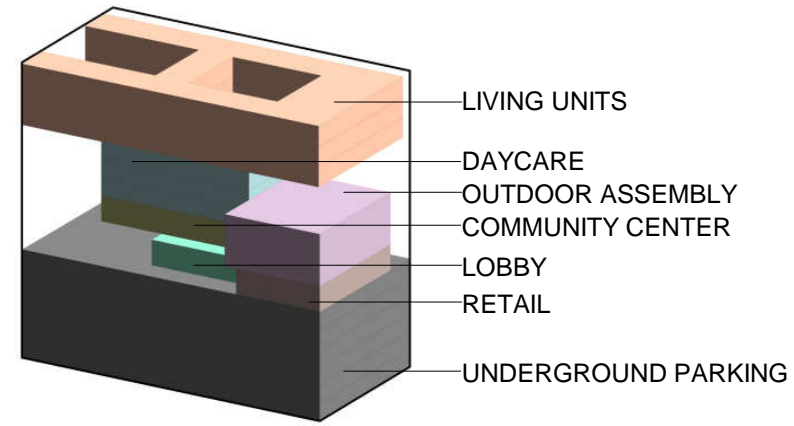


FINAL MASS

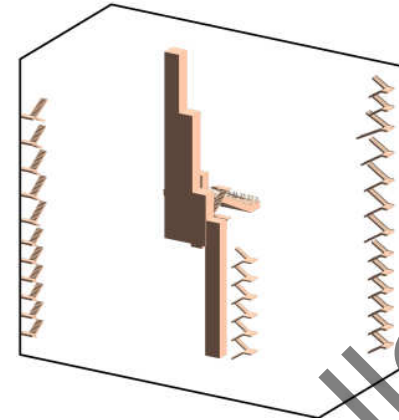
PROGRAM DIAGRAM



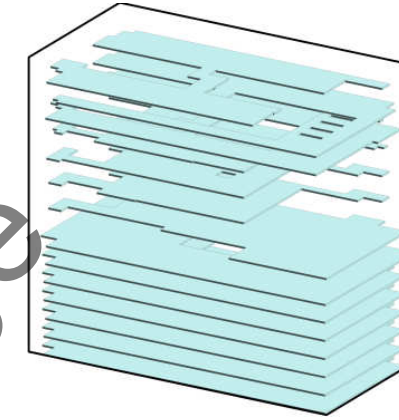
PROGRAM DIAGRAM



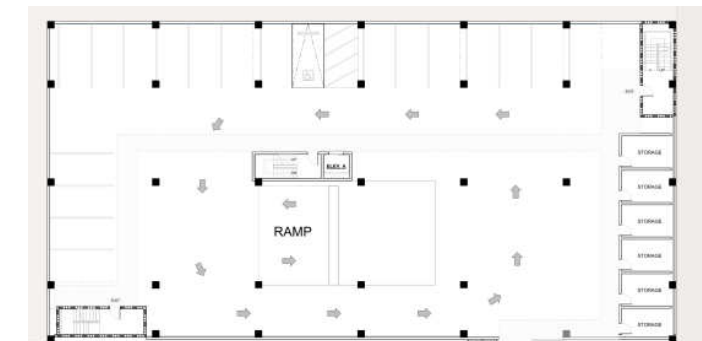
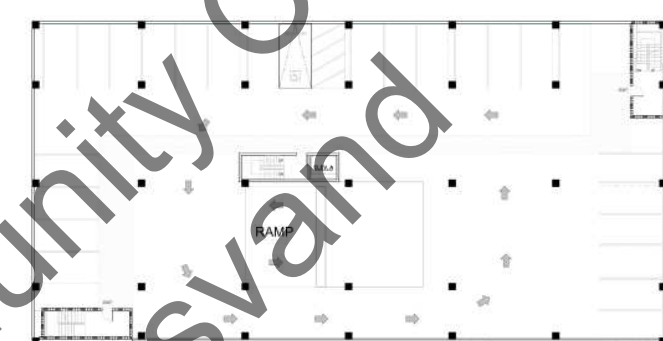
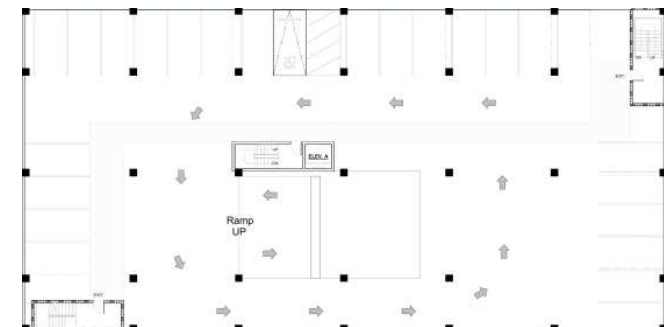
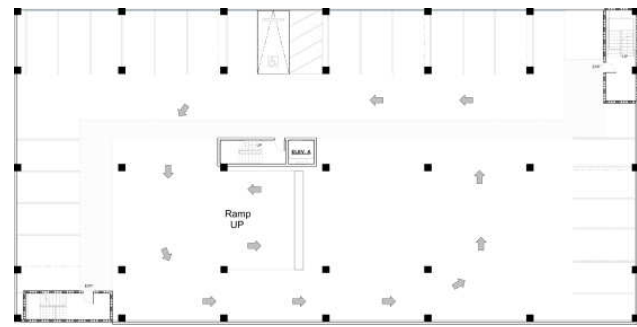
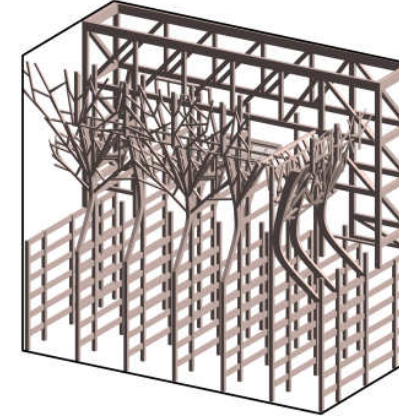
VERTICAL CIRCULATION



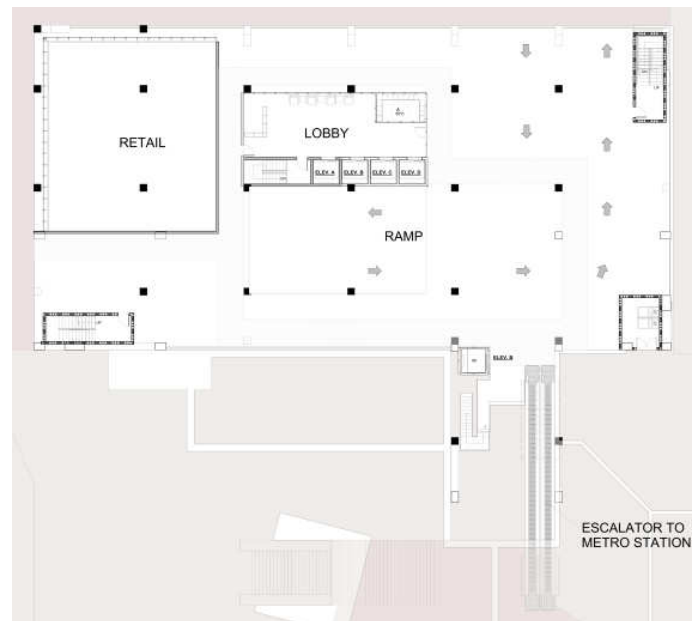
HORIZONTAL CIRCULATION



STRUCTURAL DIAGRAM

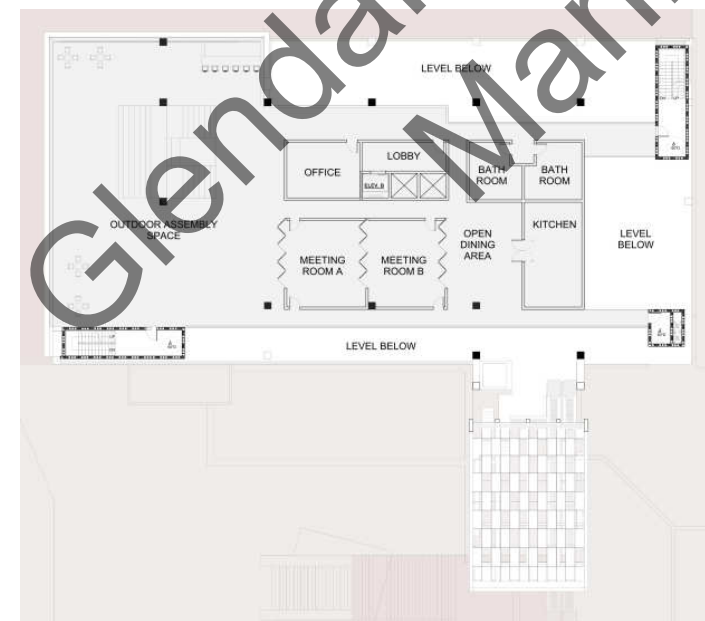


PARKING LEVEL 4



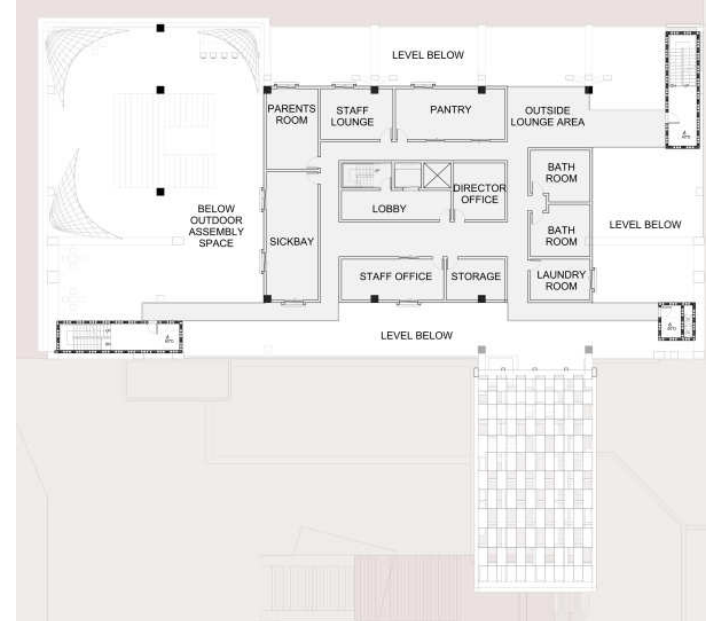
GROUND FLOOR PLAN

PARKING LEVEL 3



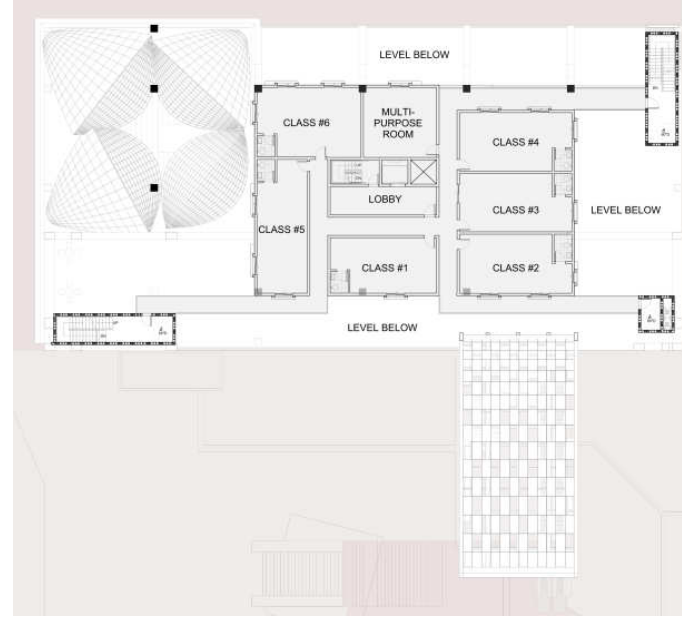
COMMUNITY CENTER FLOOR PLAN

PARKING LEVEL 2

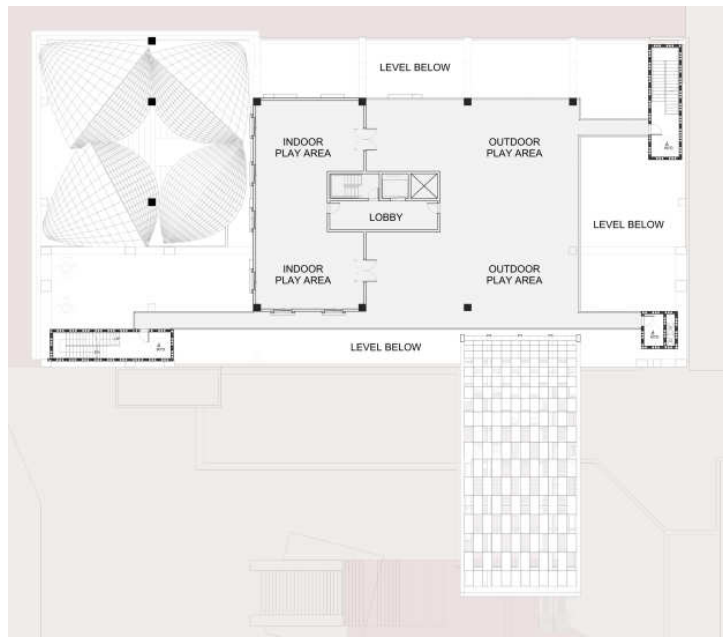


DAYCARE LEVEL 1

PARKING LEVEL 1



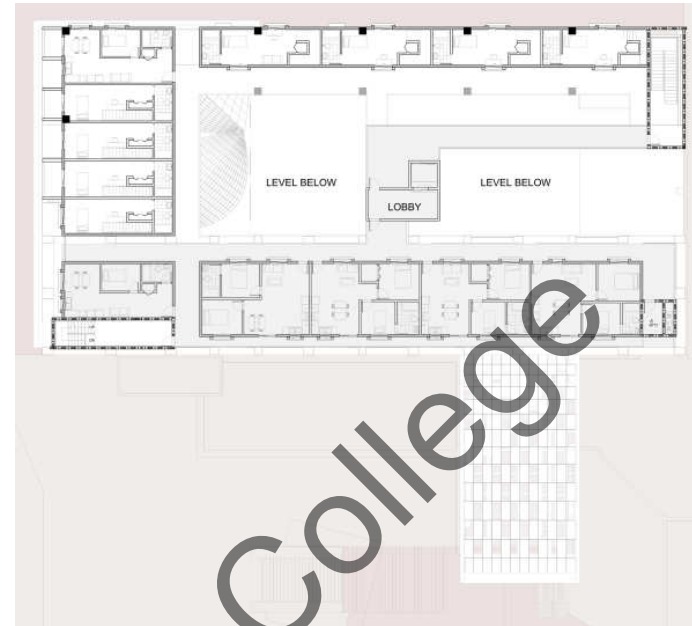
DAYCARE LEVEL 2



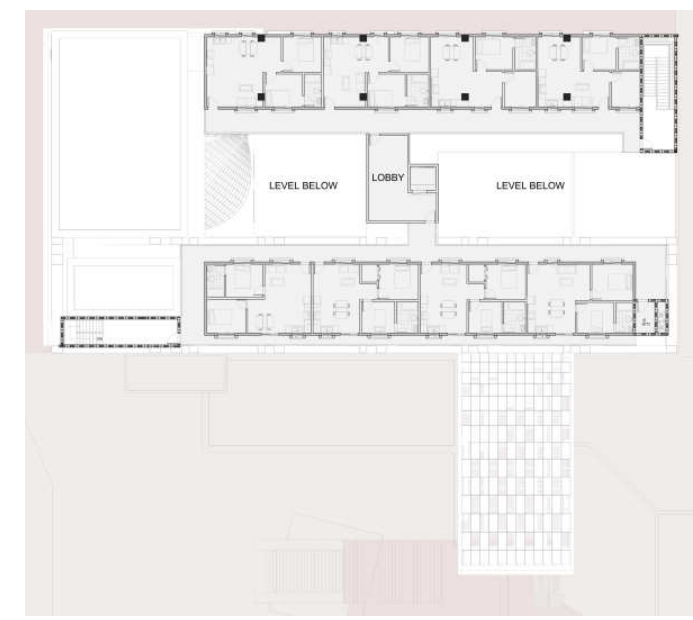
DAYCARE LEVEL 3 



LIVING ROOM LEVEL 1 

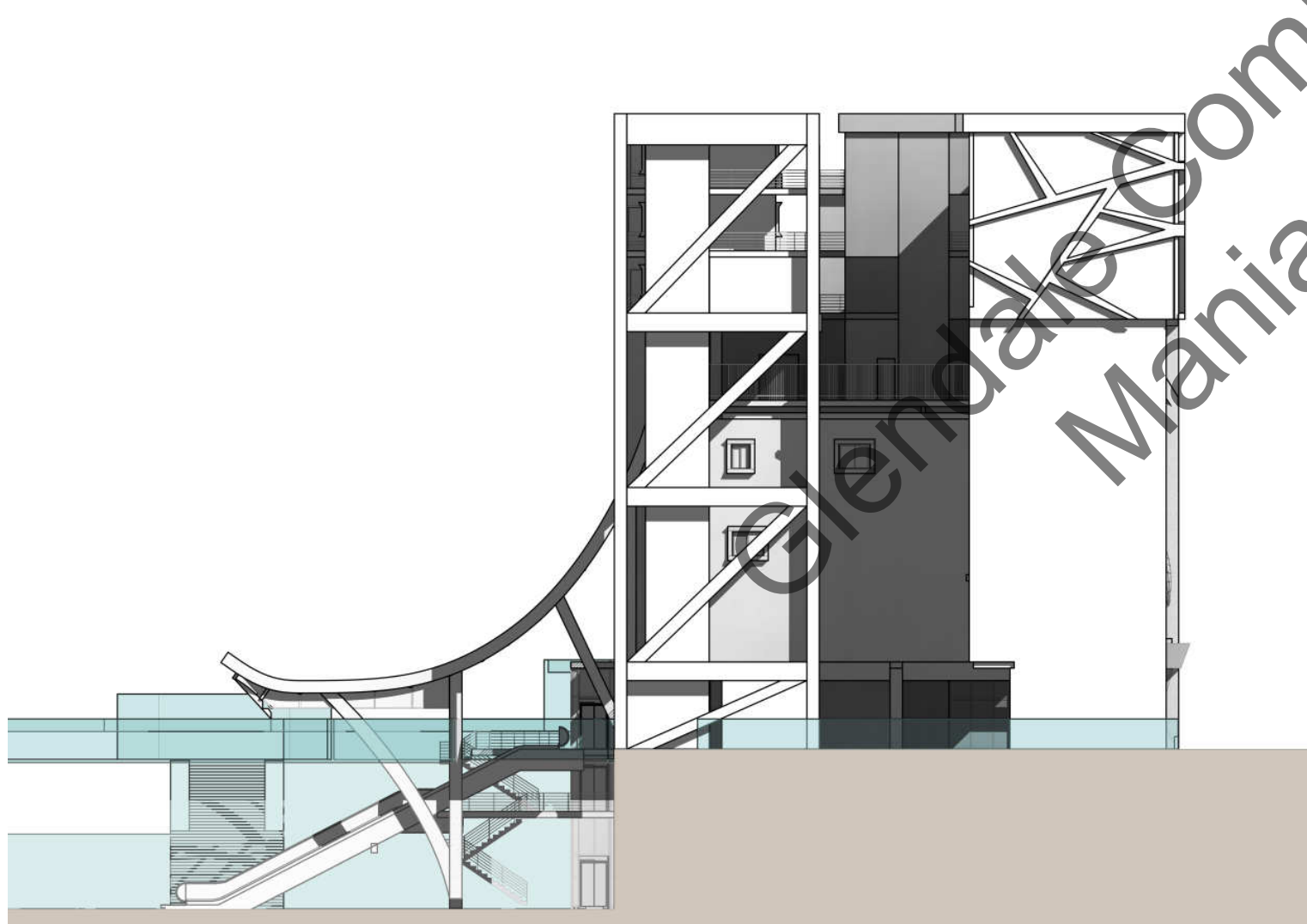


LIVING ROOM LEVEL 2 

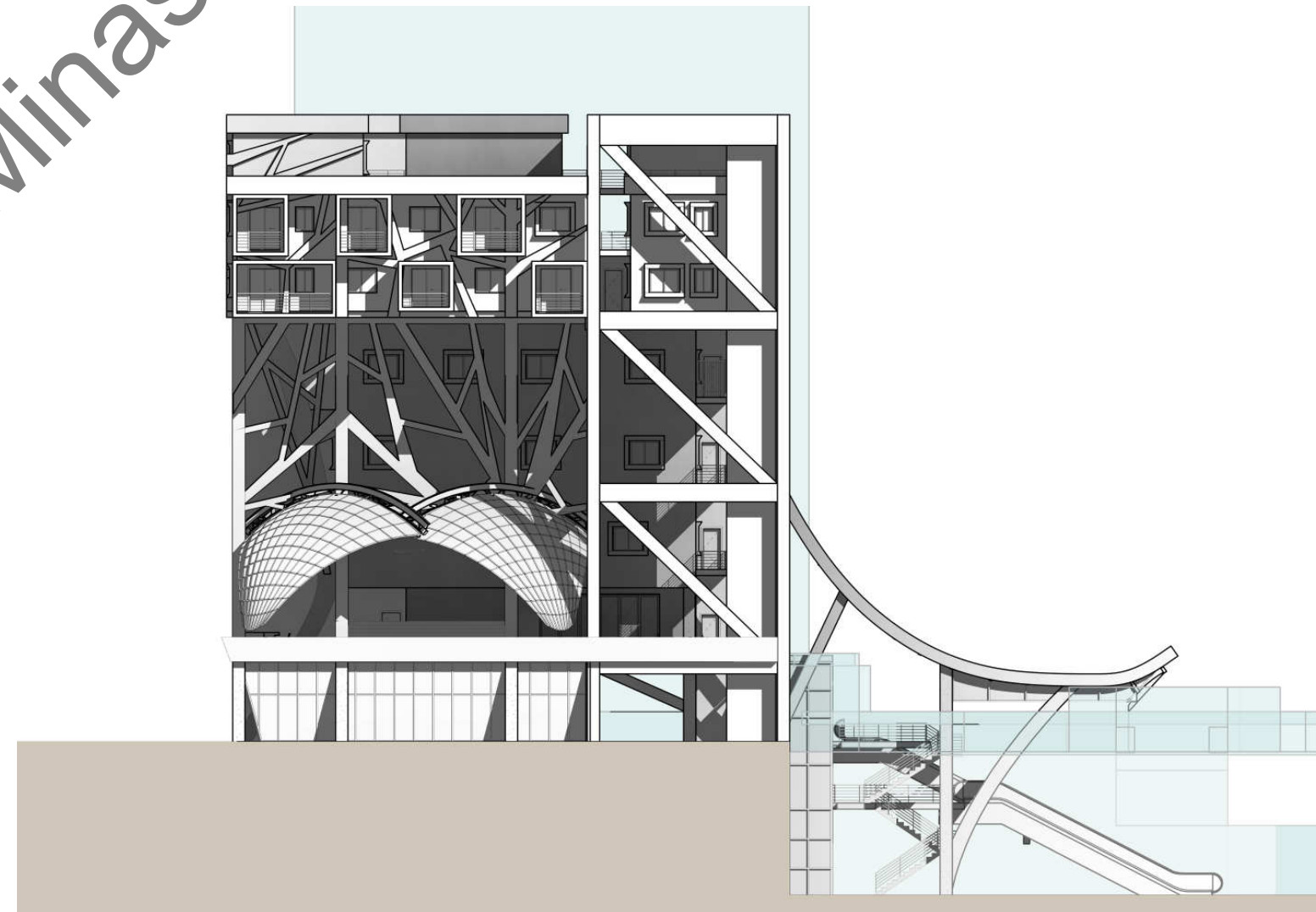


LIVING ROOM LEVEL 3 

NORTH-EAST ELEVATION WITH CUTAWAY METRO CONNECTION

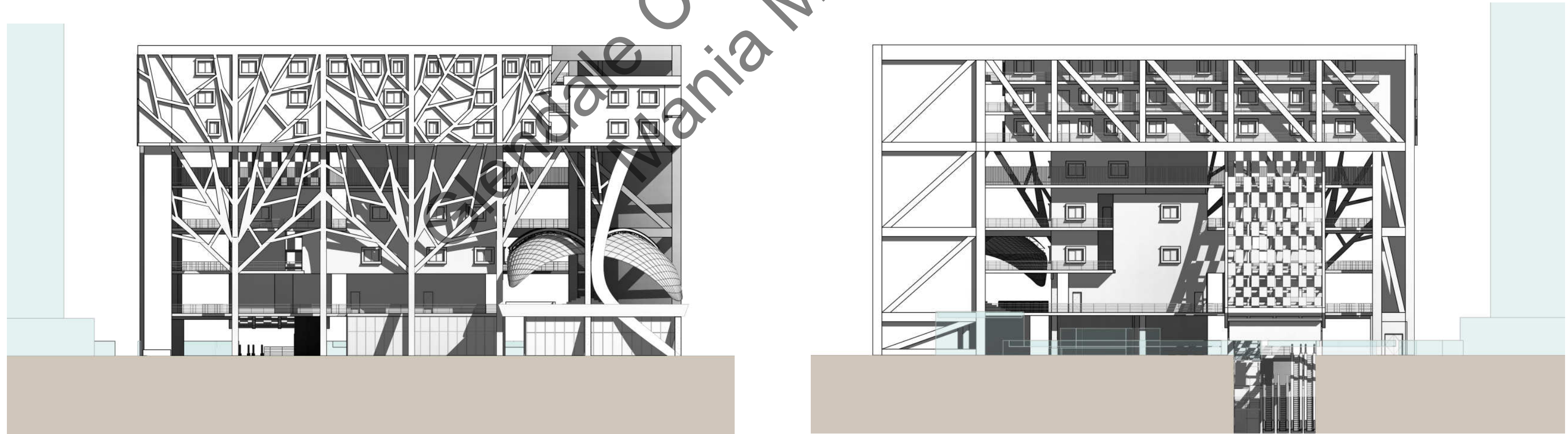


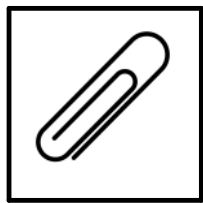
SOUTH-WEST ELEVATION WITH CUTAWAY METRO CONNECTION



NORTH-WEST ELEVATION

SOUTH-EAST ELEVATION WITH CUTAWAY METRO CONNECTION





THE PAPER CLIP HOUSE

HOME FOR THE BLIND

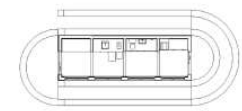


GCC
NEWSPAPER

FOLLOW THE PATH...

THE CONCEPT FOR THE HOME OF THE BLIND IS INSPIRED BY THE IDEA OF A WALKING TRAIL WHICH FORMS A CONTINUOUS TWO-DIMENSION PATH ON THE GROUND TO MARK THE SHAPE OF ITS PATTERN AND THEN WE PULL THE PATTERN UPWARDS TO FORM A THREE-DIMENSION SHAPE. JUST LIKE A SHAPE OF A PAPER CLIP RESTING ON THE GROUND AND PULLING IT UPWARDS TO FORM A THREE-DIMENSION PATH TO IMPLY A HIDDEN SPACE.

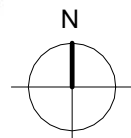
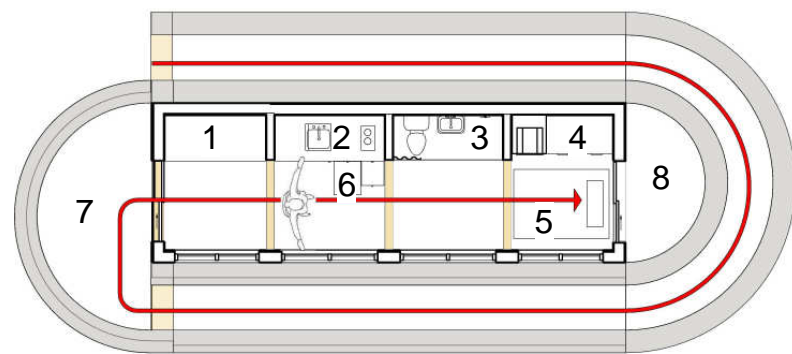
HOW DOES THE PERSON MOVE THROUGH THE SPACE?



LEGEND:

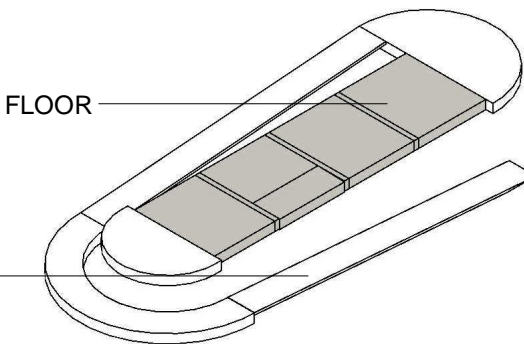
- 1.LIVING ROOM
- 2.KITCHEN
- 3.BATHROOM
- 4.BEDROOM
- 5.JAPANESE FUTON BED
- 6.KITCHEN CABINET PULL OUT TABLE AND CHAIR
- 7.FRONT COURTYARD
- 8.BACK COURTYARD

- TRANSITIONAL TACTILE PAVING
- BOUNDARY BUSHES
- BARRIER FREE ACCESS

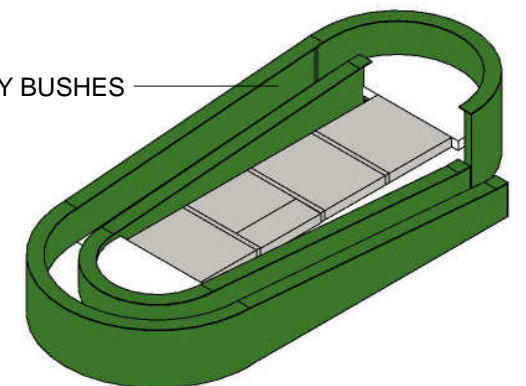


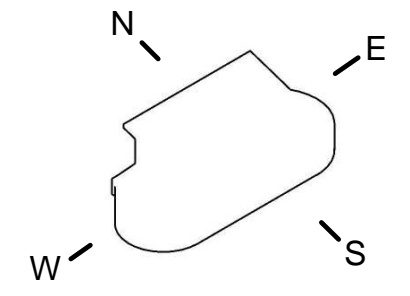
RAISED FLOOR

RAMP



BOUNDARY BUSHES





PV SOLAR PANELS

MATERIAL BAN
SURROUNDING THE HOUSE

TRANSITIONAL TACTILE
PAVING

HOME APPLIANCES

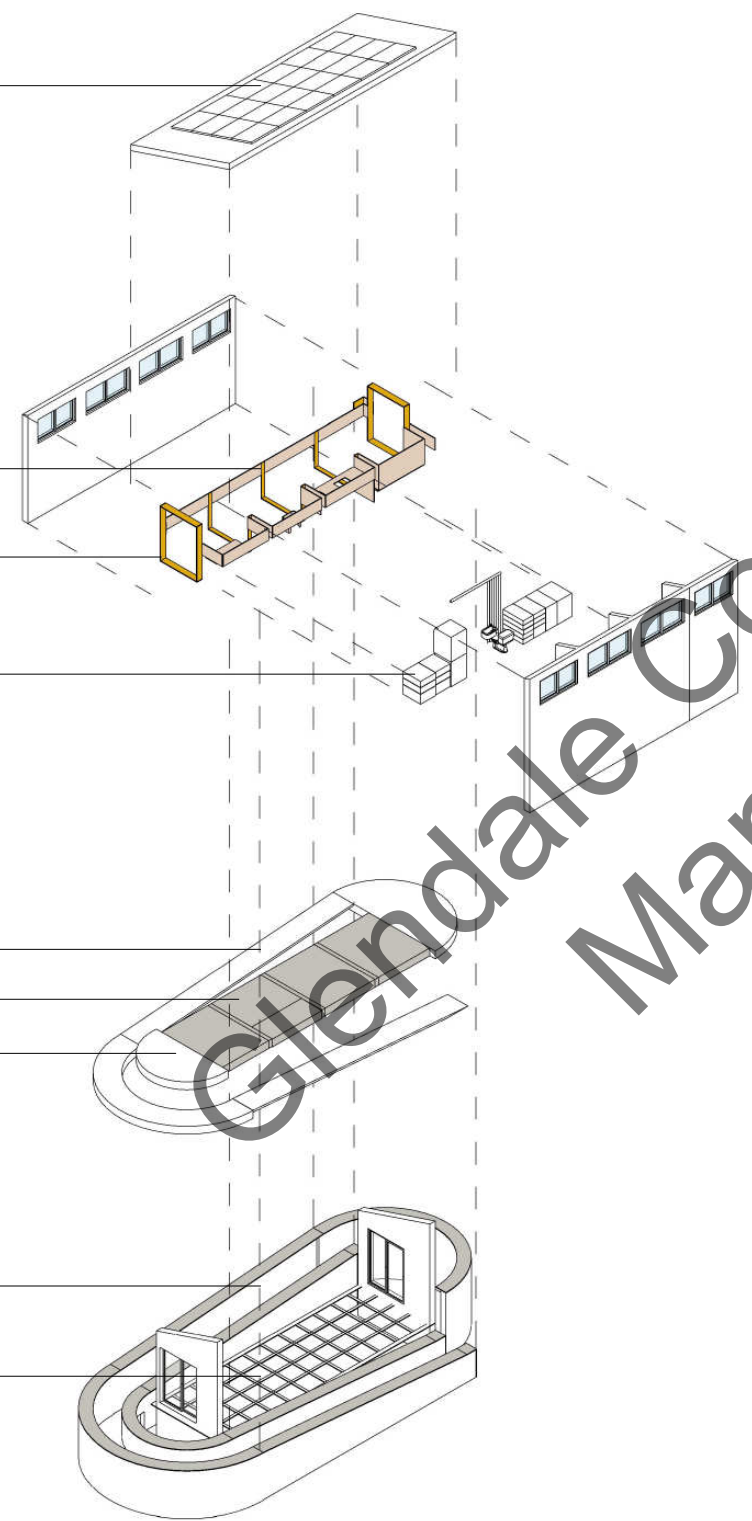
RAMP

RAISED FLOOR

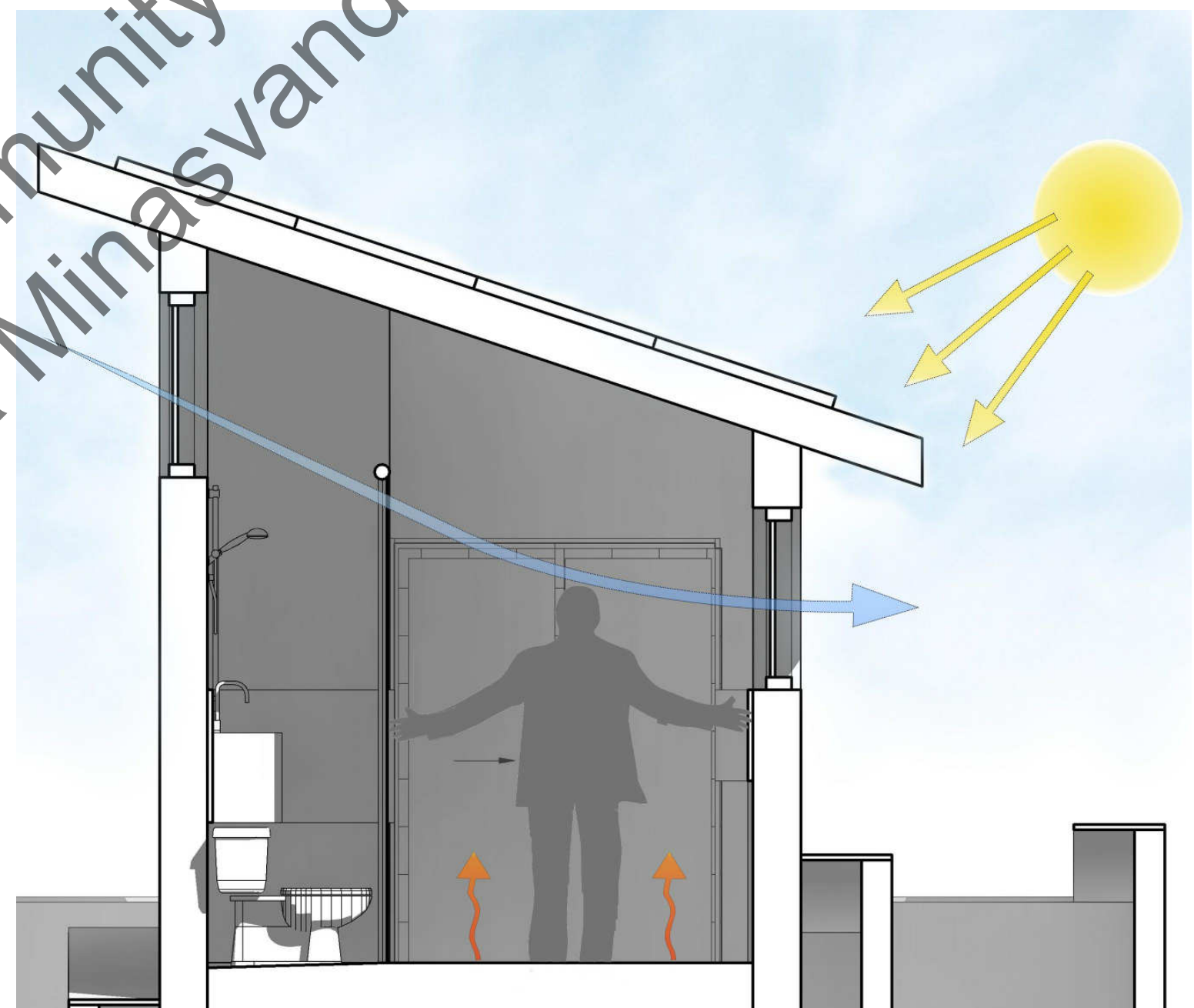
BACK COURTYARD

BOUNDARY BUSHES

RAISED FLOOR FOR
UNDERGROUND PLUMBING
AND HEATING SYSTEM



Glendale Community College
Mania Minasvand



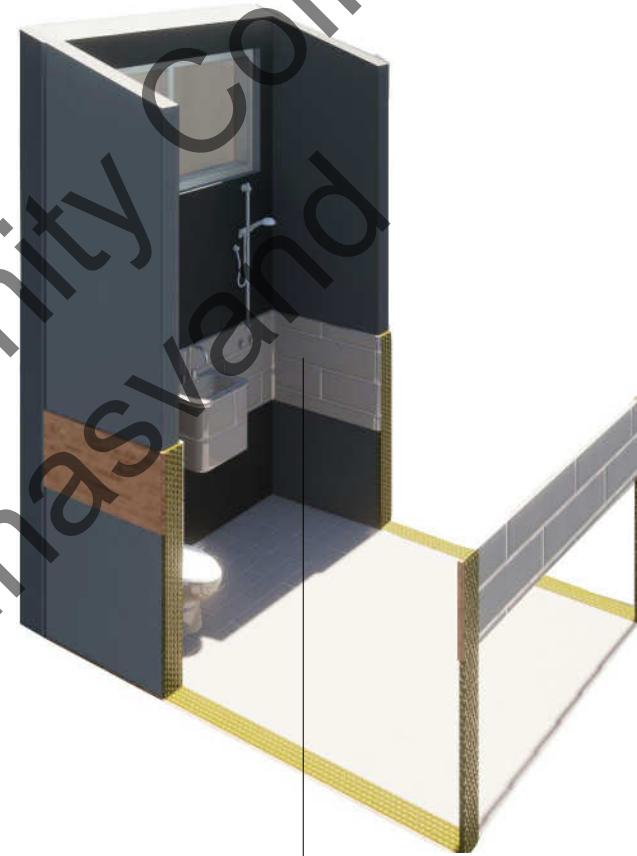
MATERIALS



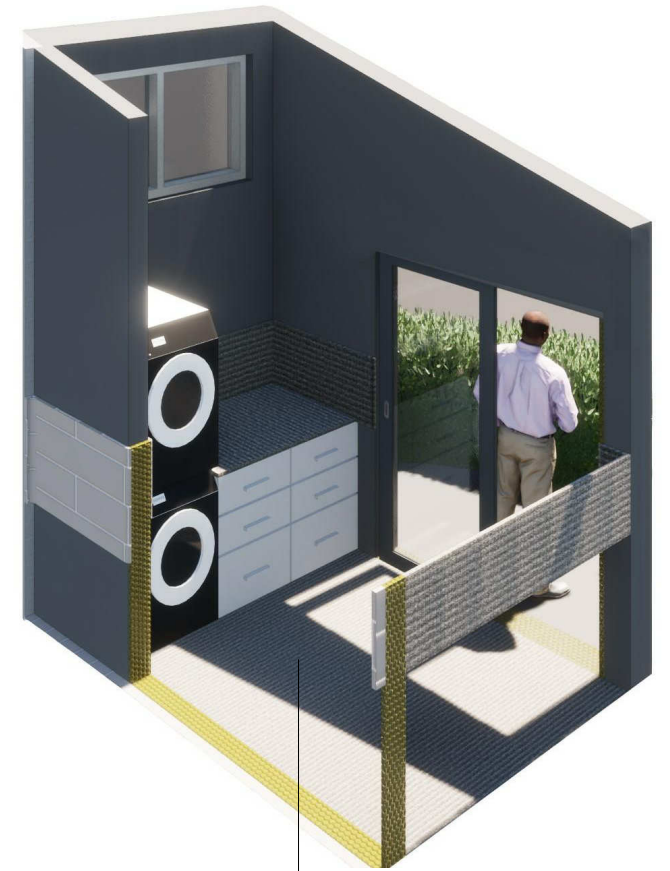
CEDAR WOOD IS OFTEN RECOGNIZED FOR ITS PLEASANT AROMA. IT'S USED IN MANY TYPES OF FURNITURE AND ROOFING.



ROSE WOOD WITH FLORAL AROMA



PLASTIC TILES USED FOR BATHROOM



JAPANESE TATAMI FLOORING

SECTION



SECTION



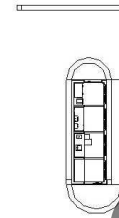
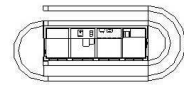
Glendale Community College
Mania Minasvand



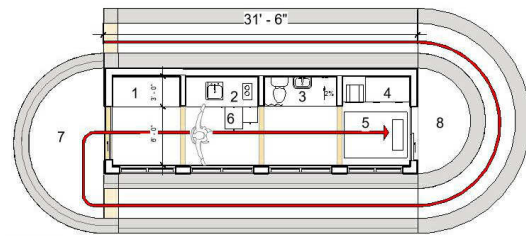
HOME FOR THE BLIND
THE PAPER CLIP HOUSE



HOW DOES THE PERSON MOVE THROUGH THE SPACE?



THE CONCEPT FOR THE HOME OF THE BLIND IS INSPIRED BY THE IDEA OF A WALKING TRAIL WHICH FORMS A CONTINUOUS TWO-DIMENSION PATH ON THE GROUND TO MARK THE SHAPE OF ITS PATTERN AND THEN WE PULL THE PATTERN UPWARDS TO FORM A THREE-DIMENSION SHAPE. JUST LIKE A SHAPE OF A PAPER CLIP RESTING ON THE GROUND AND PULLING IT UPWARDS TO FORM A THREE-DIMENSION PATH TO IMPLY A HIDDEN SPACE.



- LEGEND:**
- 1. LIVING ROOM
 - 2. KITCHEN
 - 3. BATHROOM
 - 4. BEDROOM
 - 5. JAPANESE FUTON BED
 - 6. KITCHEN CABINET PULL OUT TABLE & CHAIR
 - 7. FRONT COURTYARD
 - 8. BACK COURTYARD
 - TRANSITIONAL TACTILE PAVING
 - BOUNDARY BUSHES
 - BARRIER FREE ACCESS

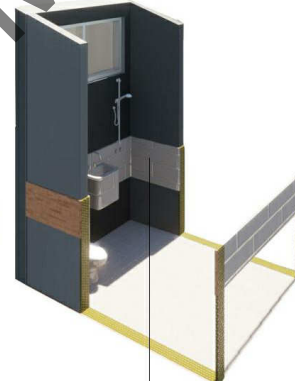
- RAISED FLOOR
- RAMP
- BOUNDARY BUSHES
- PROVIDING SECURITY BY RAISED FLOOR AND BARRIER FREE ACCESS DESIGN



CEDAR WOOD IS OFTEN RECOGNIZED FOR ITS PLEASANT AROMA. IT'S USED IN MANY TYPES OF FURNITURE AND ROOFING.



ROSE WOOD WITH FLORAL AROMA



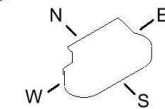
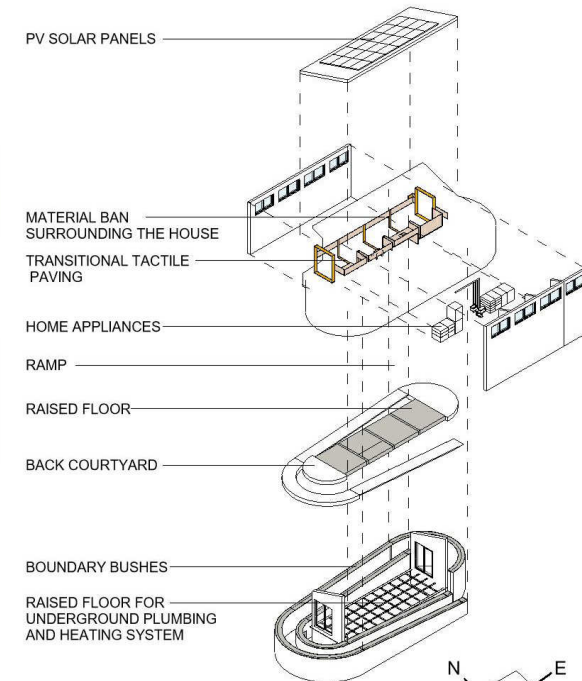
PLASTIC TILES USED FOR BATHROOM



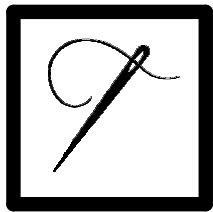
JAPANESE TATAMI FLOORING



PROVIDING INDEPENDENCY BY PASSIVE SOLAR ENERGY AND NATURAL HEATING SYSTEM



ORIENTATION OF THE HOUSE AND MATERIAL USED IN THE DESIGN ARE GIVING THEM THE COMFORT THEY NEED



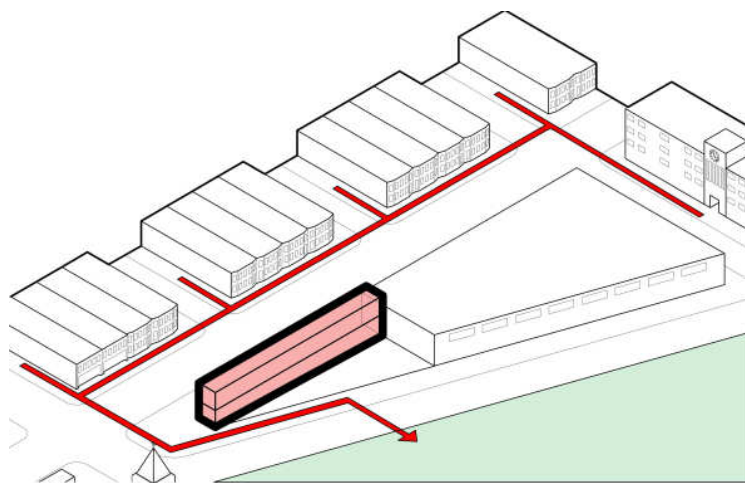
SANCTUARY

COMMUNITY RESOURCE CENTER

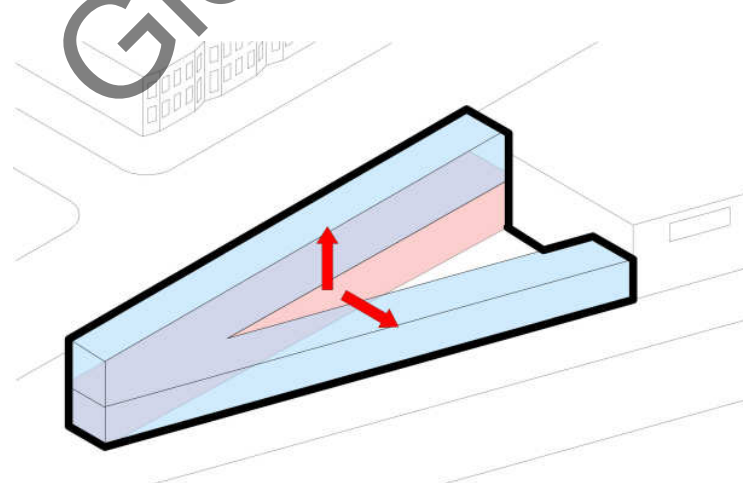
THE PROJECT SANCTUARY IS TO DESIGN A COMMUNITY RESOURCE CENTER WHICH PROVIDE A PATHWAY TO SAFETY, STABILITY, AND SELF-EFFICIENCY ON AN IMAGINARY URBAN SITE OF AN UNDER-RESOURCED NEIGHBORHOOD. THE CONCEPT OF THE BUILDING IS TO CONNECT THE RESIDENCE AND THE PARK LIKE A THREAD PASSING THROUGH THE NEEDLE'S HEAD.



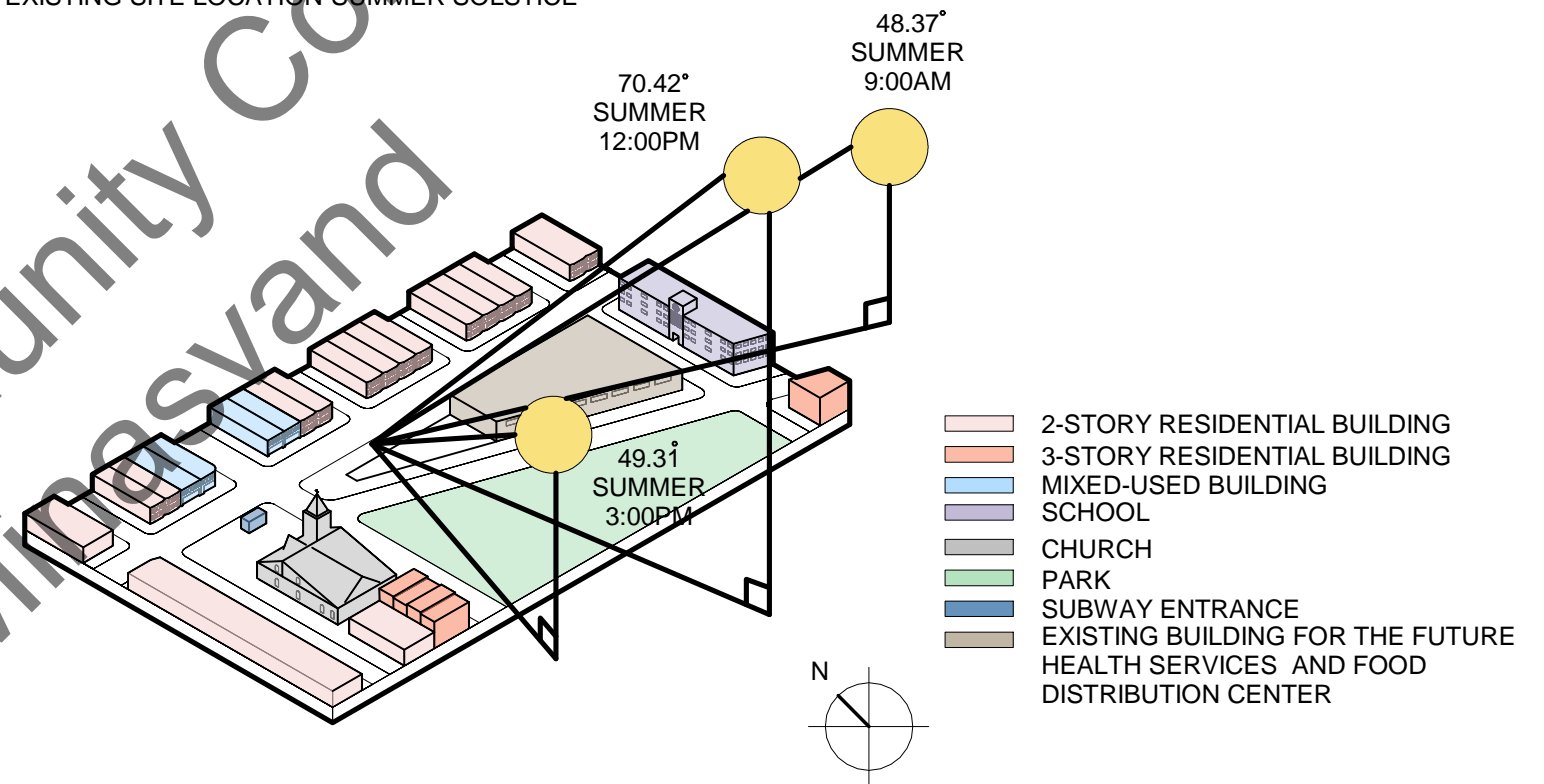
THE GREAT BRICK WALL



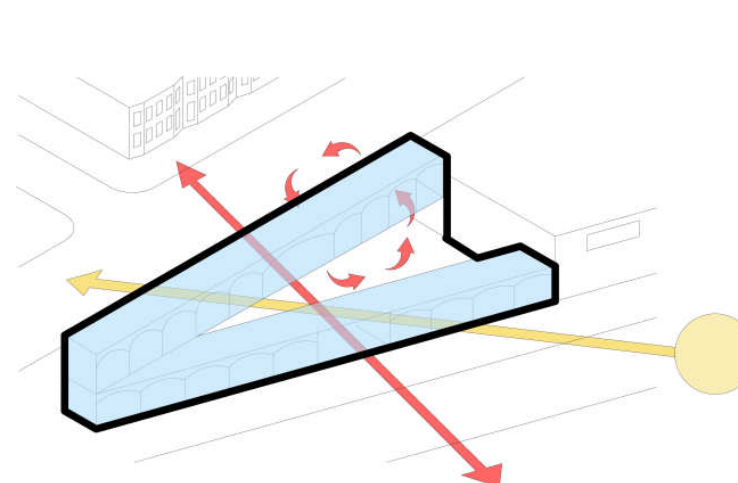
HORIZONTAL SHEAR OF SPACE



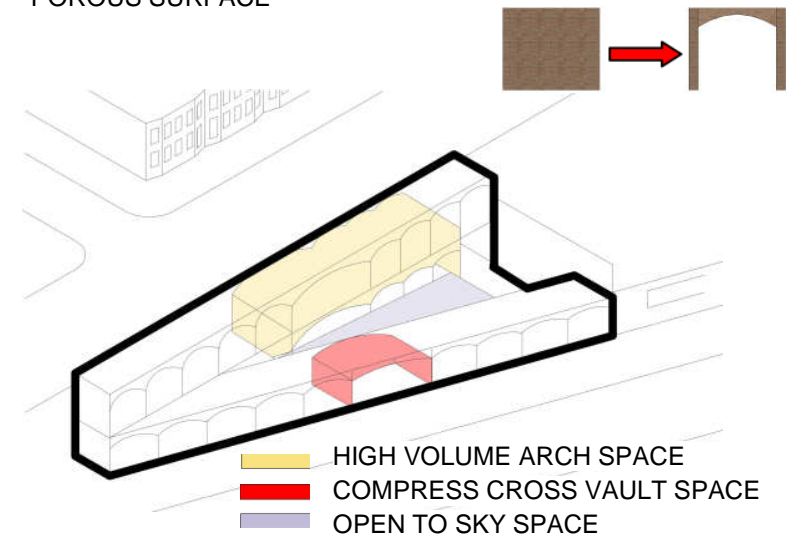
EXISTING SITE LOCATION-SUMMER SOLSTICE



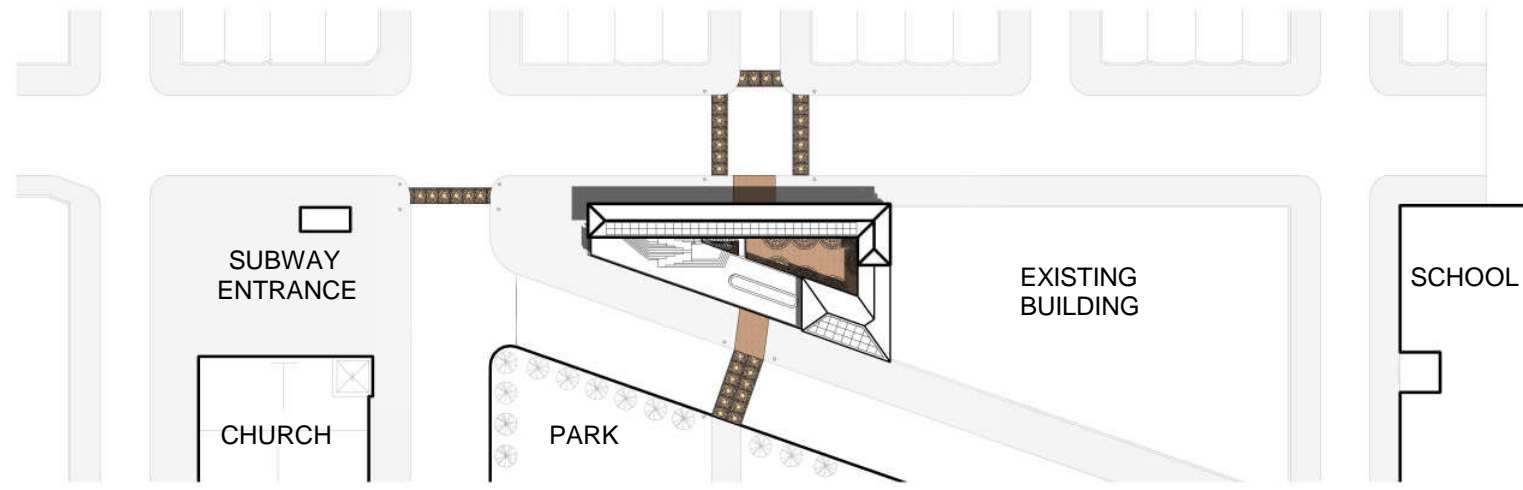
PERMEABILITY



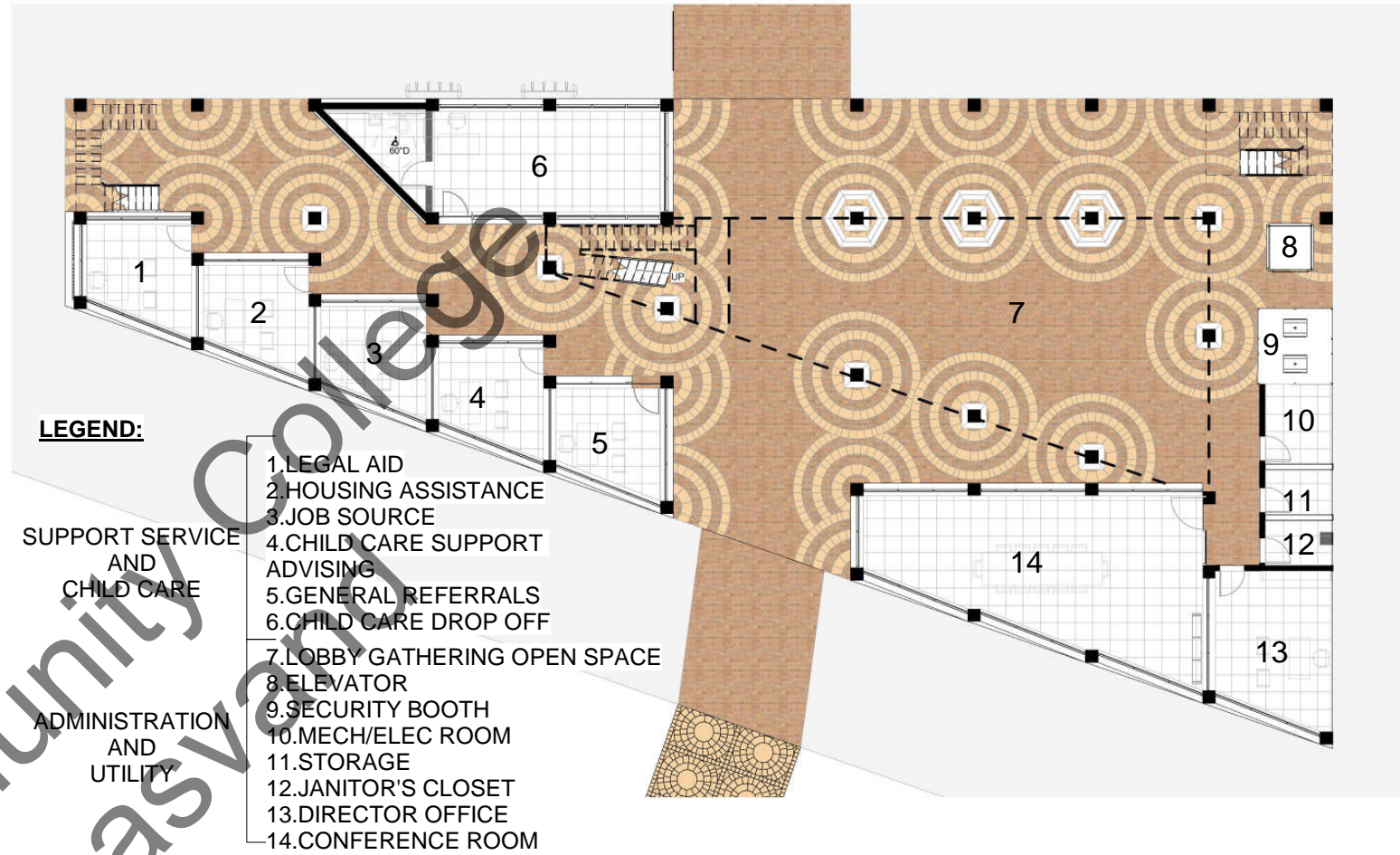
POROUS SURFACE



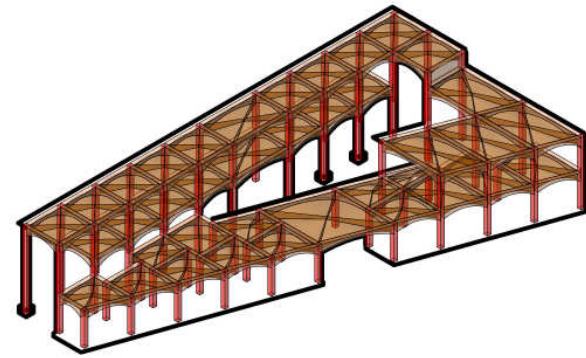
SITE PLAN



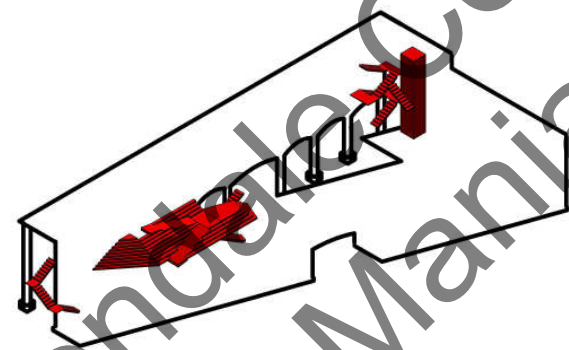
GROUND FLOOR PLAN



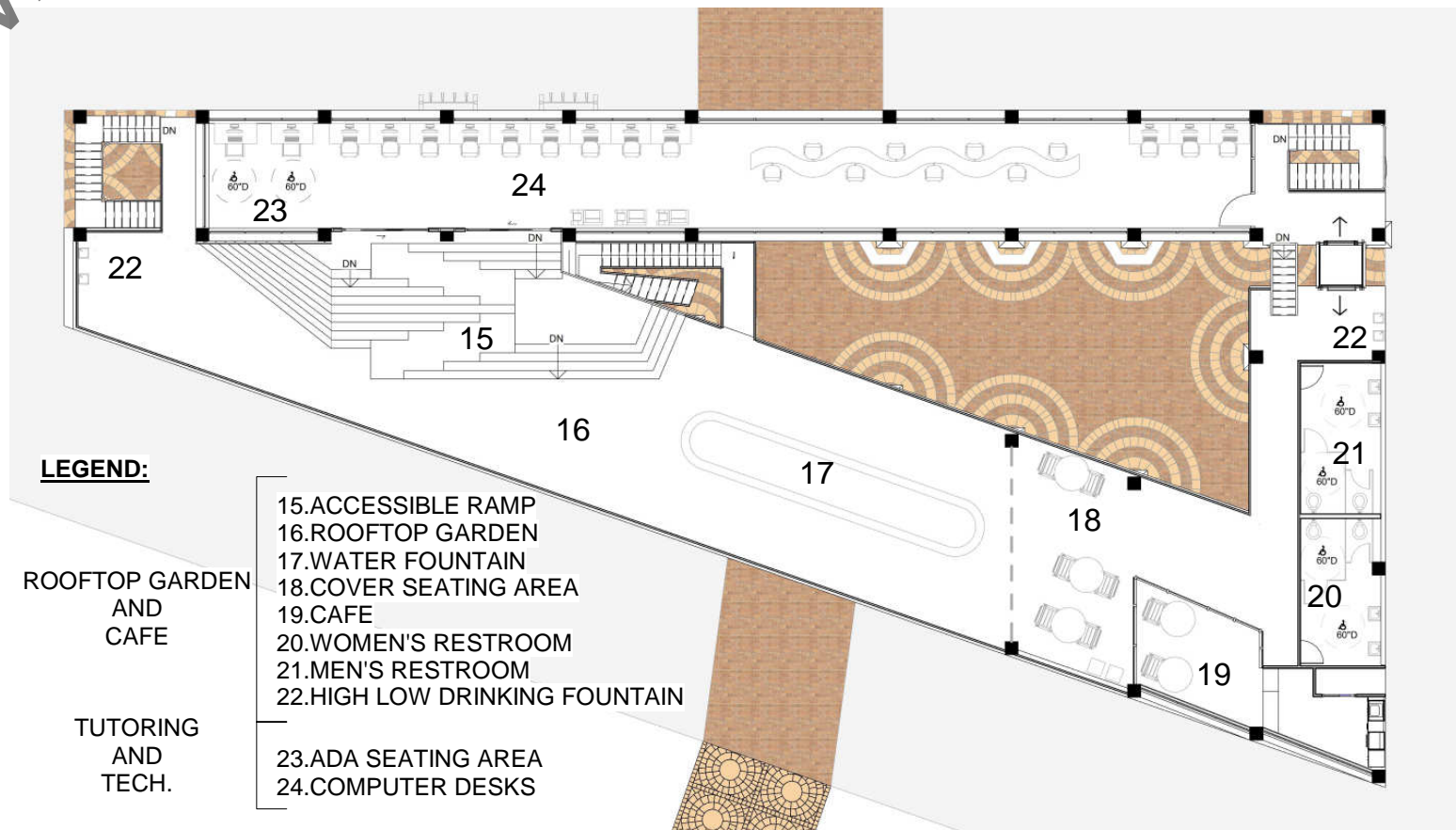
STRUCTURAL DIAGRAM



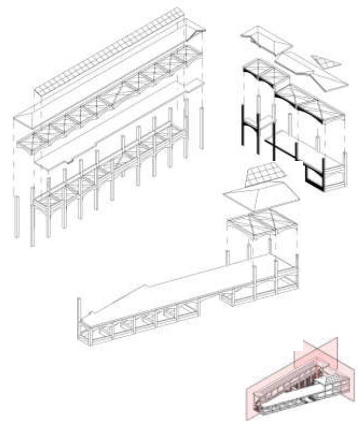
VERTICAL CIRCULATION



SECOND FLOOR PLAN



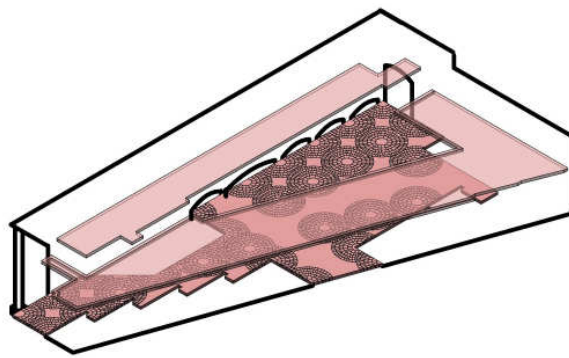
EXPLODED MODULE



VARIANT BUILDING MODULE



HORIZONTAL CIRCULATION



GATHERING / OPEN SPACE VIEW



NORTH ELEVATION VIEW AT NIGHT TOWARD THE BUILDING



VIEW FROM CAFE LEVEL LOOKING DOWN TO OPEN SPACE



SOUTH ELEVATION VIEW AT NIGHT TOWARD THE BUILDING



NATURE SKY OPENING SPACE



COMPRESS CROSS VAULT CEILING SPACE



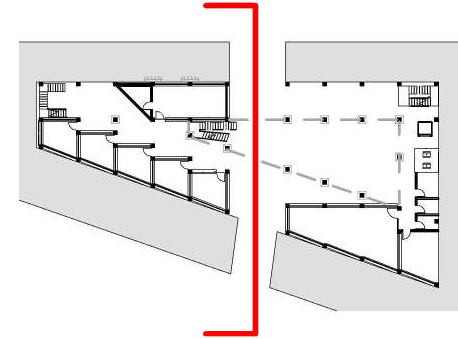
HIGH VOLUME CROSS VAULT CEILING SPACE

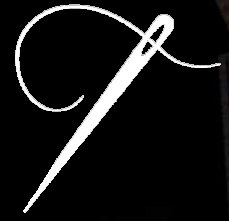


VIEW TO NATURE



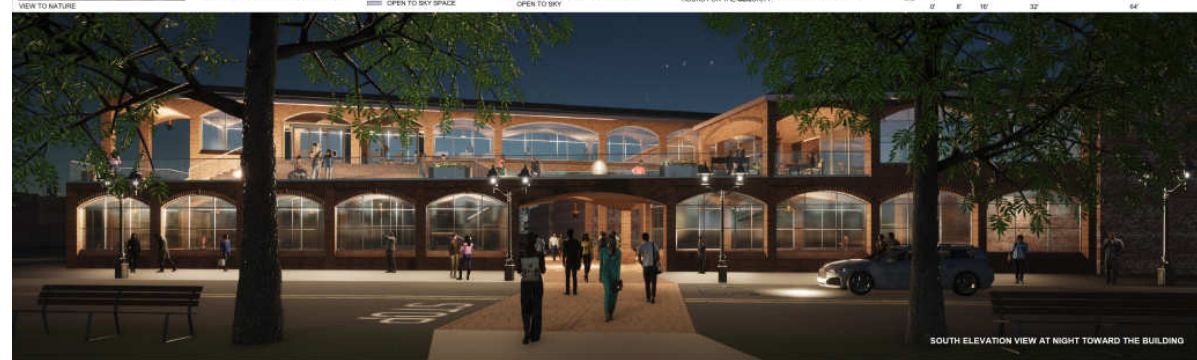
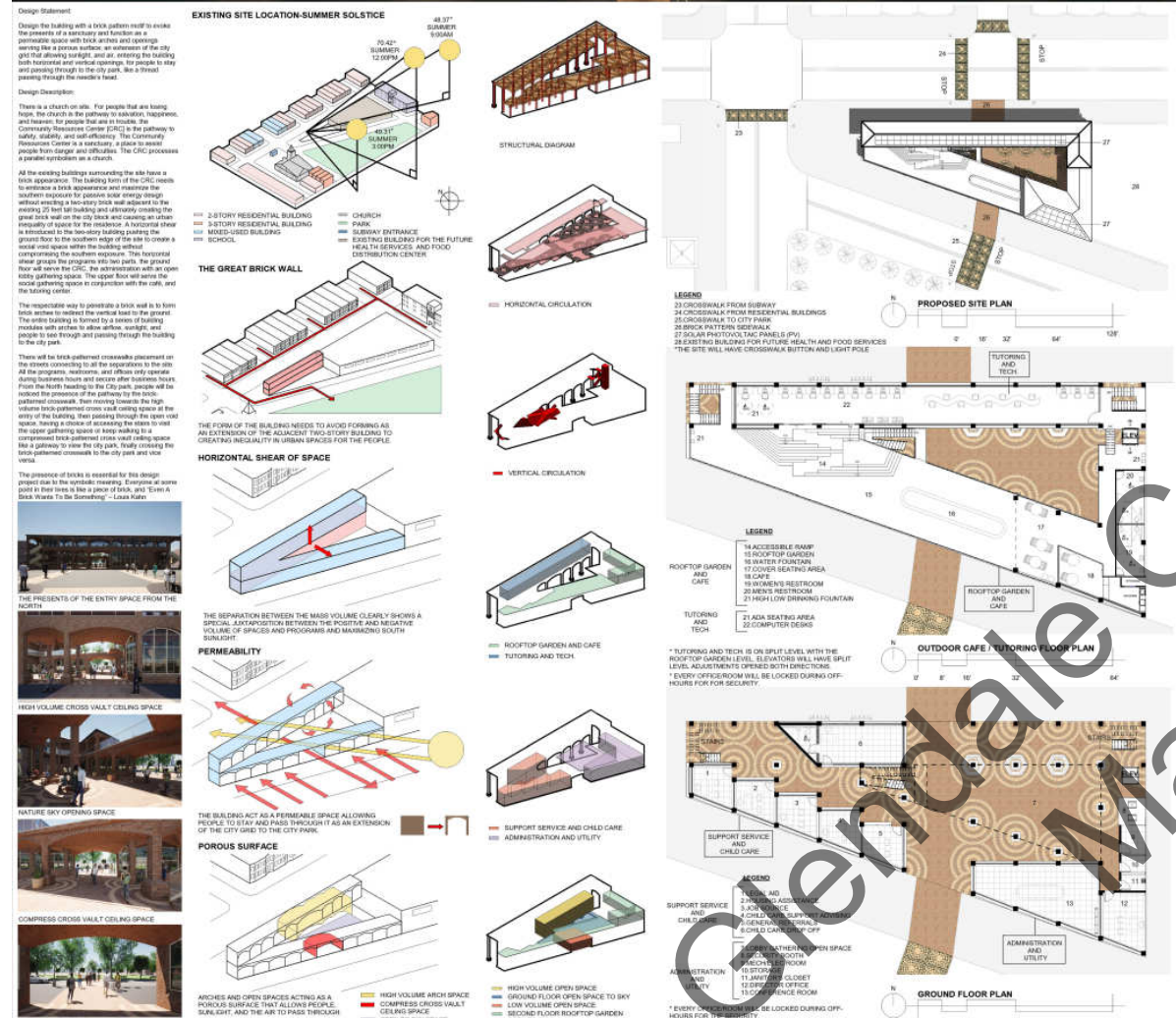
Glendale Community College
Mania Minasvand

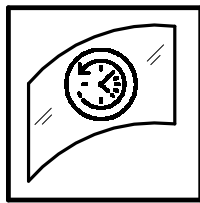




Everyone at some point in their lives is like a piece of brick,
and "Even A Brick Wants To Be Something" – Louis Kahn







JANUS MOMENTS CHAMBER

RESIDENTIAL PROJECT / SENIOR HOUSING

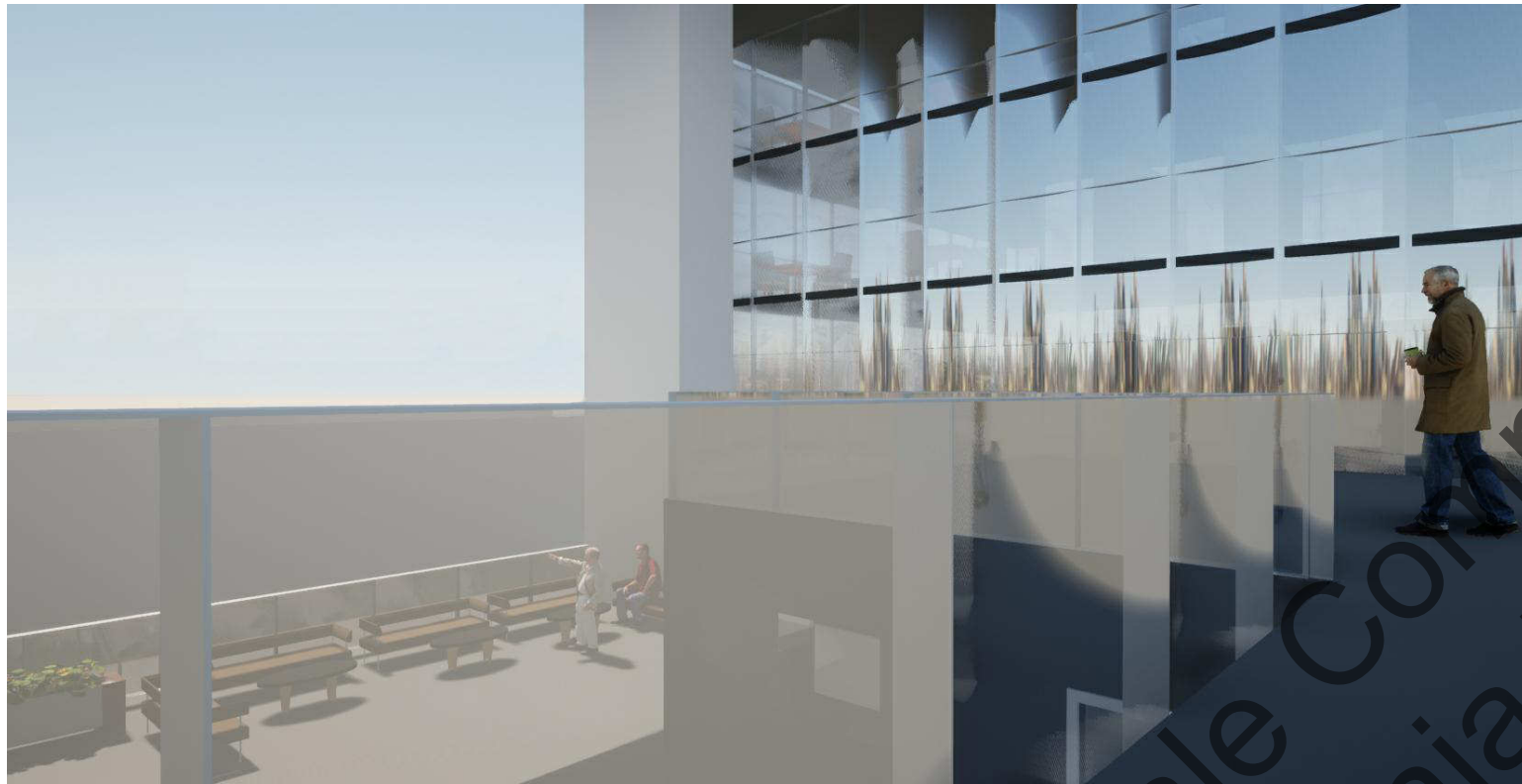
520 PICO BLVD,
LOS ANGELES, CA



20X20
WOODBURY
PLATFORM
2021

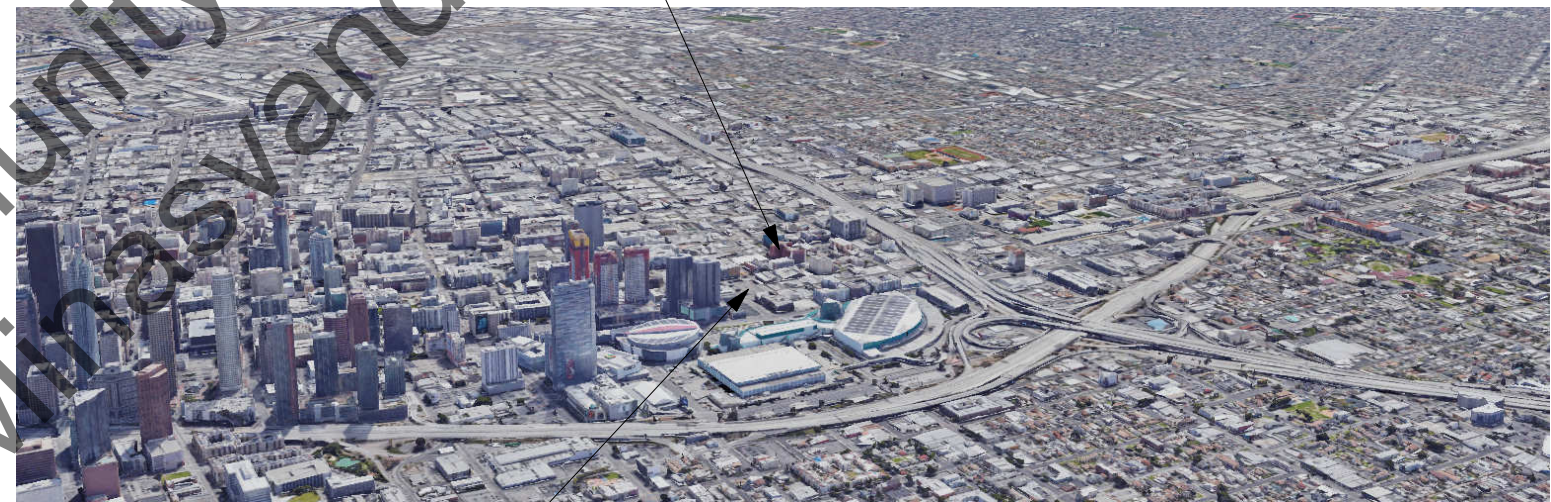
WHAT DO ELDERLY PEOPLE WANT... THEY WANT TO LEAVE A TRACE OF THEIR EXISTANCE

A SENIOR HOUSING IS NOT A MONUMENT... IT IS A TESTIMONY OF **TIME**

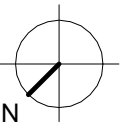


PHYSICAL LOCATION

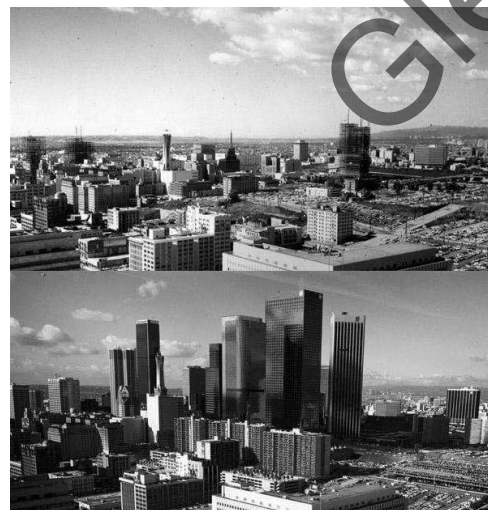
DIGNITY HEALTH-CALIFORNIA HOSPITAL



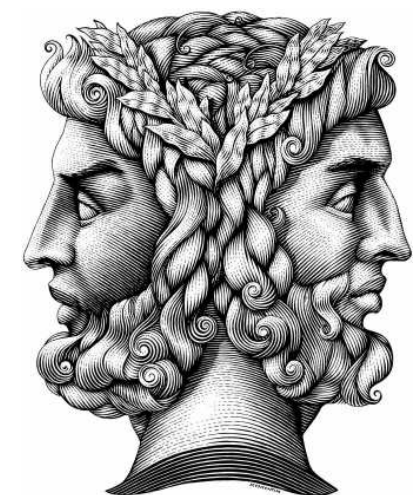
SITE LOCATION



SYMBOLIC MEANING OF THE PROJECT LOCATION



SYMBOLIC MEANING OF THE TITLE / JANUS

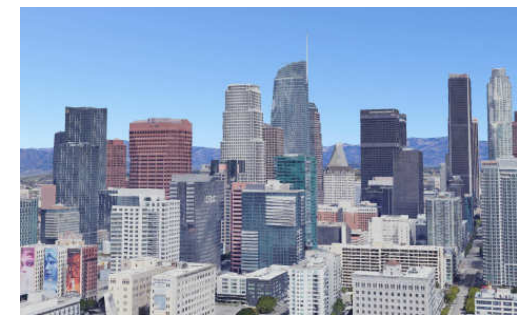


CONCEPTUAL LOCATION

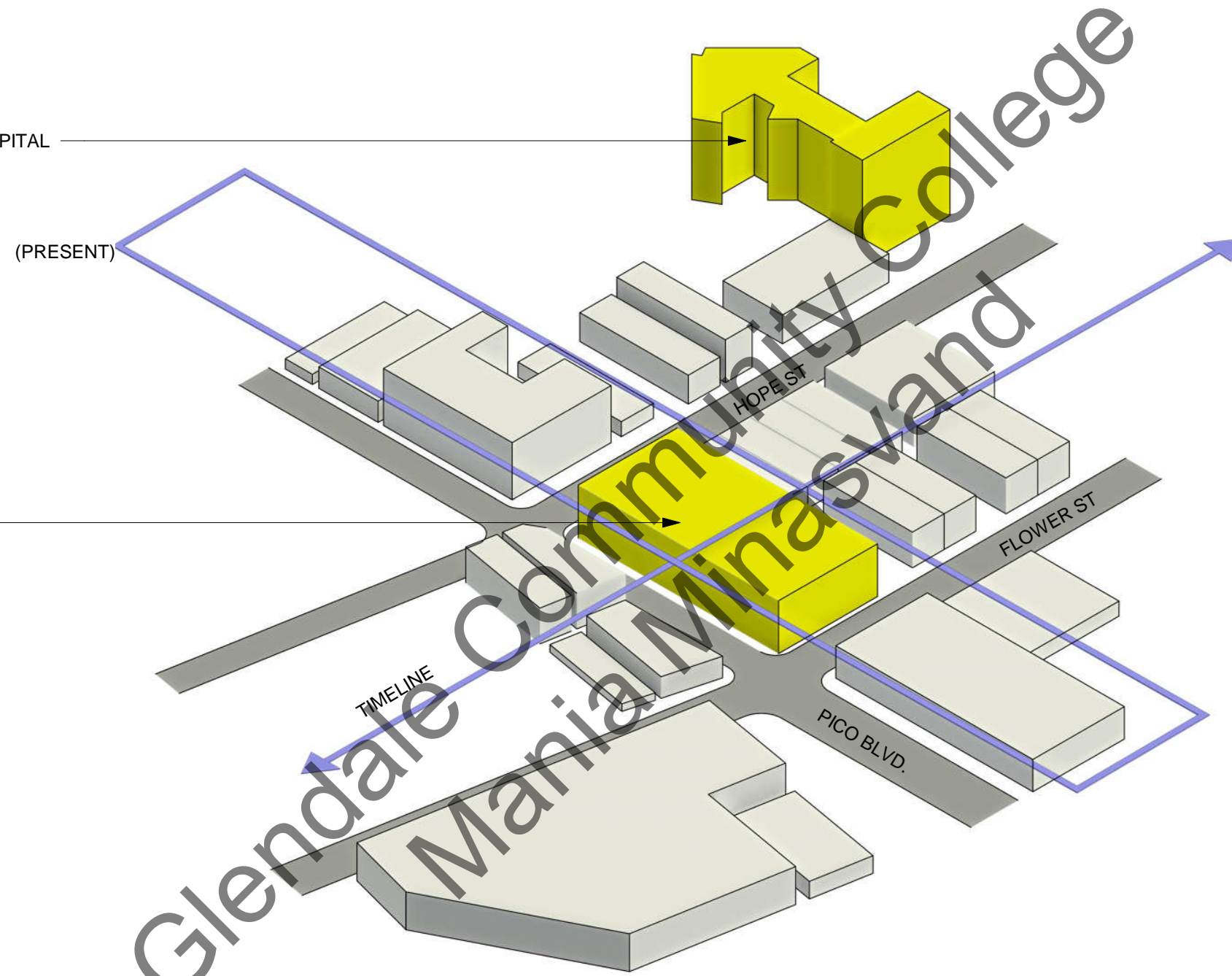
DIGNITY HEALTH-CALIFORNIA HOSPITAL

(PRESENT)

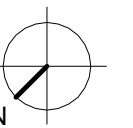
SITE LOCATION



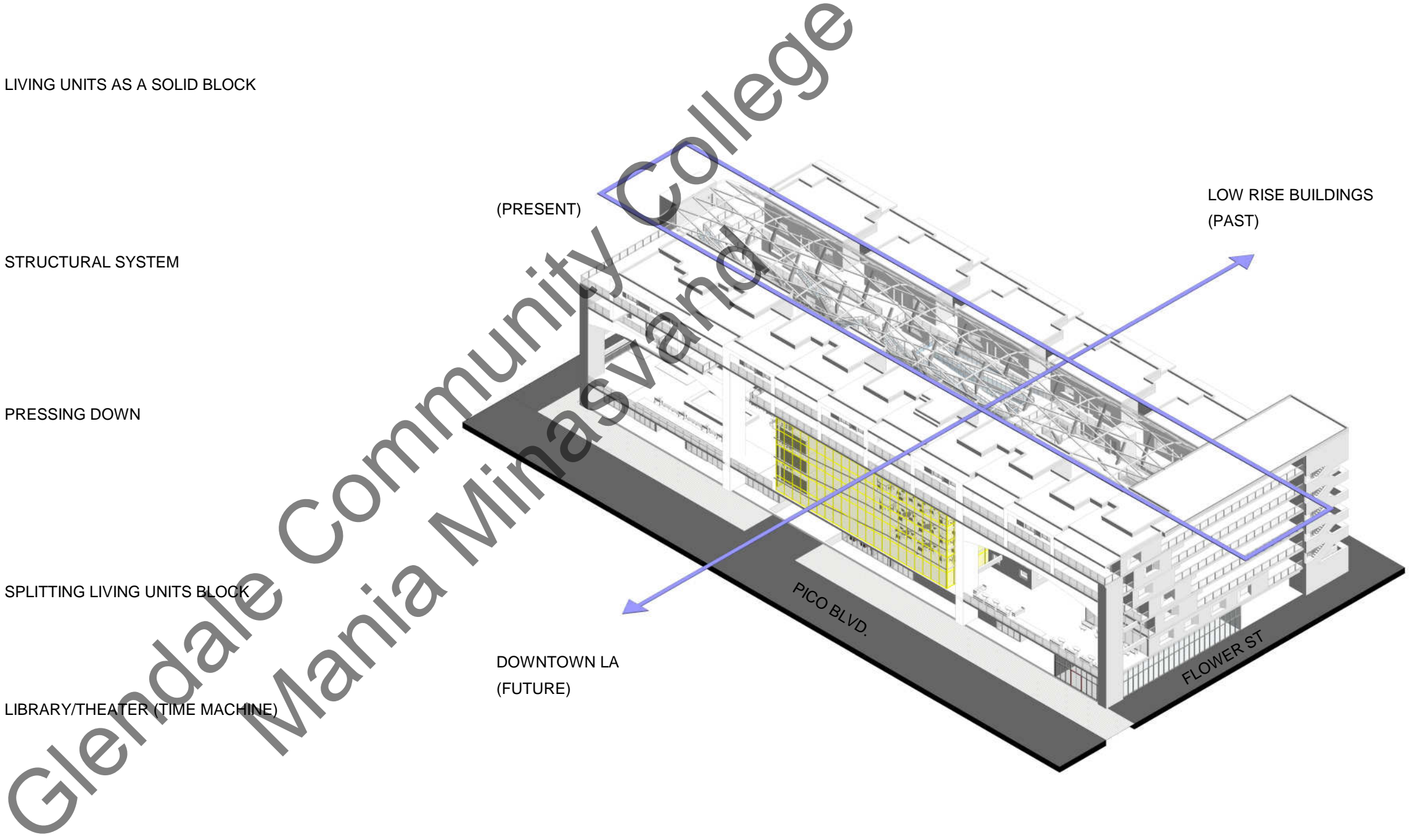
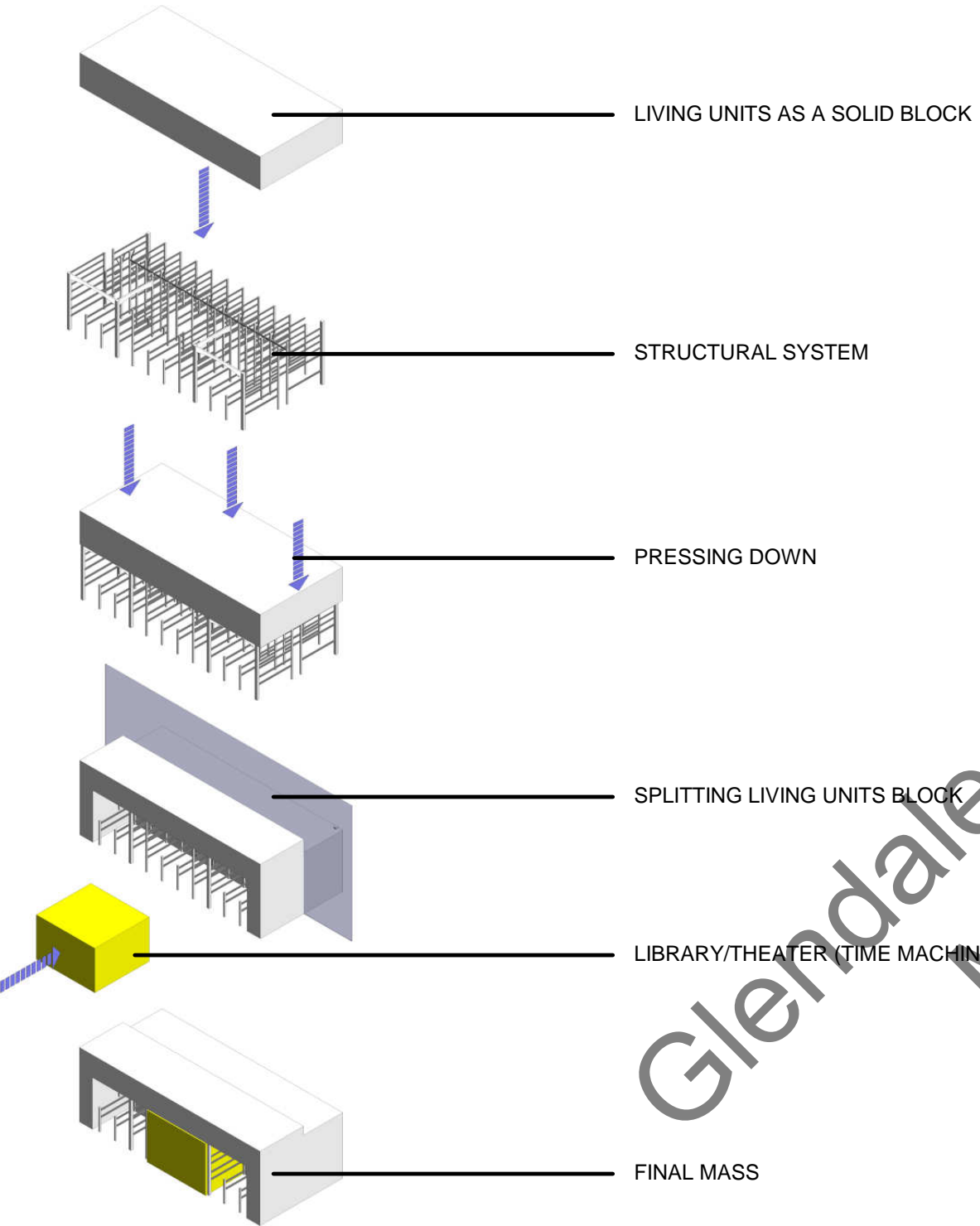
DOWNTOWN LA
(FUTURE)



LOW RISE BUILDINGS
(PAST)



PARTI DIAGRAM OF THE CHAMBERS



TIME MACHINE

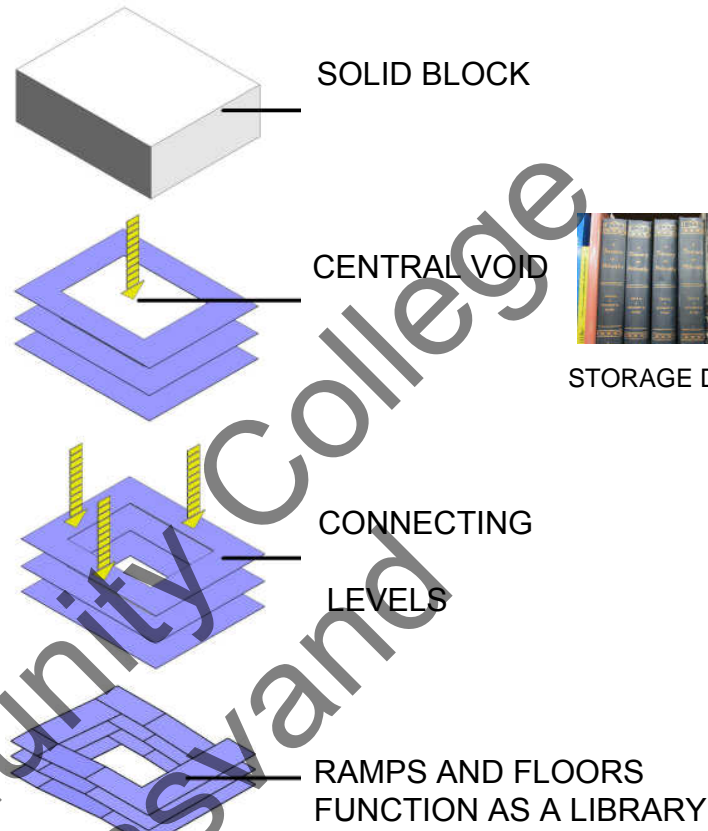


THEATER
(PLAY/RECREATE)



LIBRARY (SAVE/STORAGE)

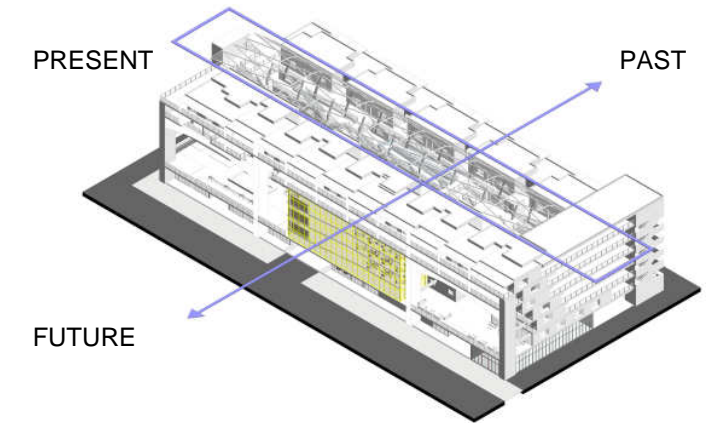
LIBRARY - THE CONTENTS OF LIFE / SAVE / STORAGE
THE LIBRARY IS TO PRESERVE THE PAST, A METAPHOR OF A TIME MACHINE



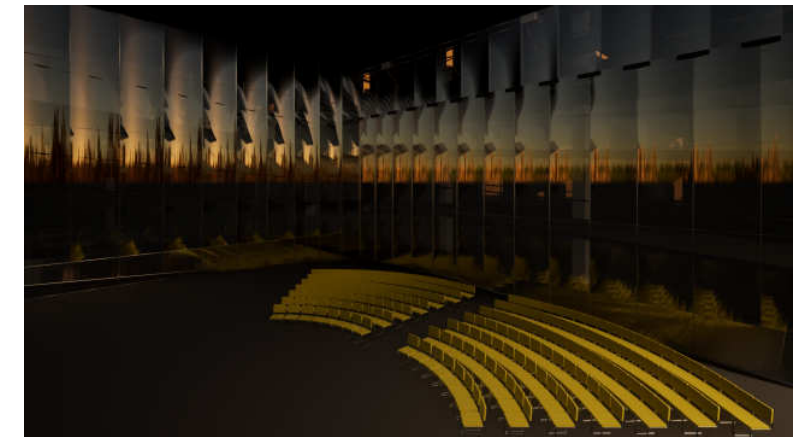
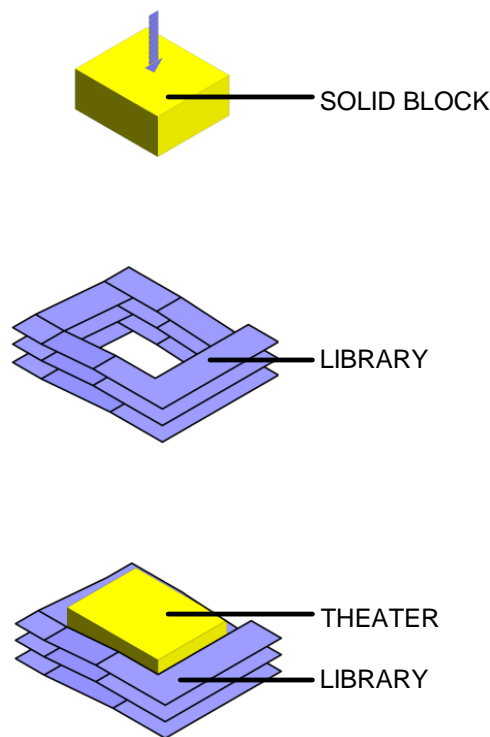
STORAGE DEVICE



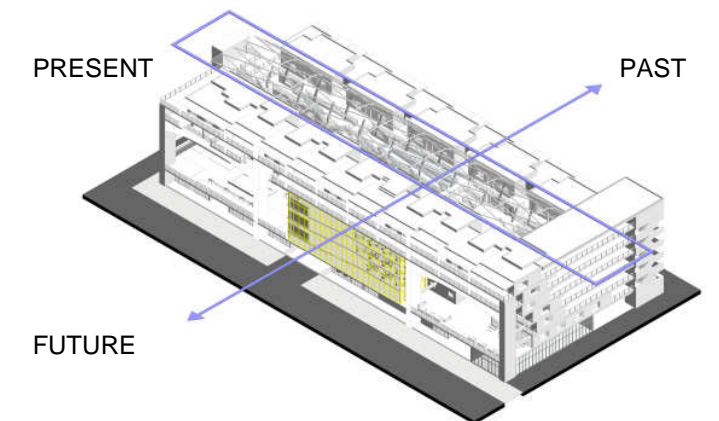
LIBRARY AS A TIME MACHINE



THEATER - UNVEIL HISTORICAL MEMORIES / PLAY / RECREATE
THE THEATER IS TO UNVEIL THE MEMORIES, A METAPHOR OF A TIME MACHINE

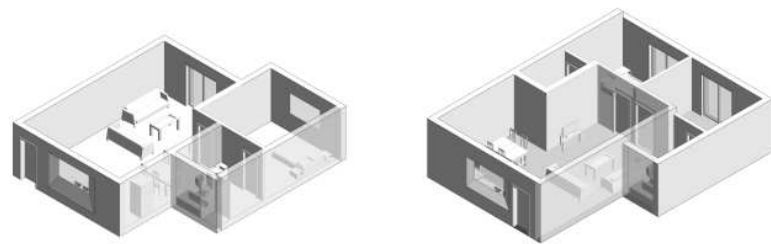
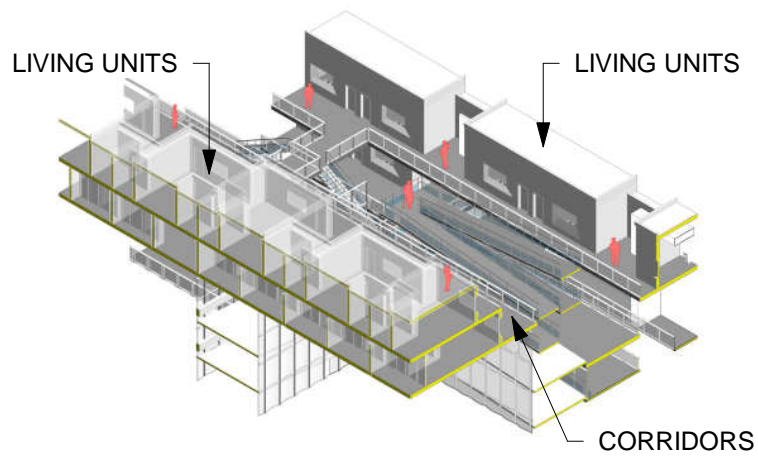


THEATER AS A TIME MACHINE

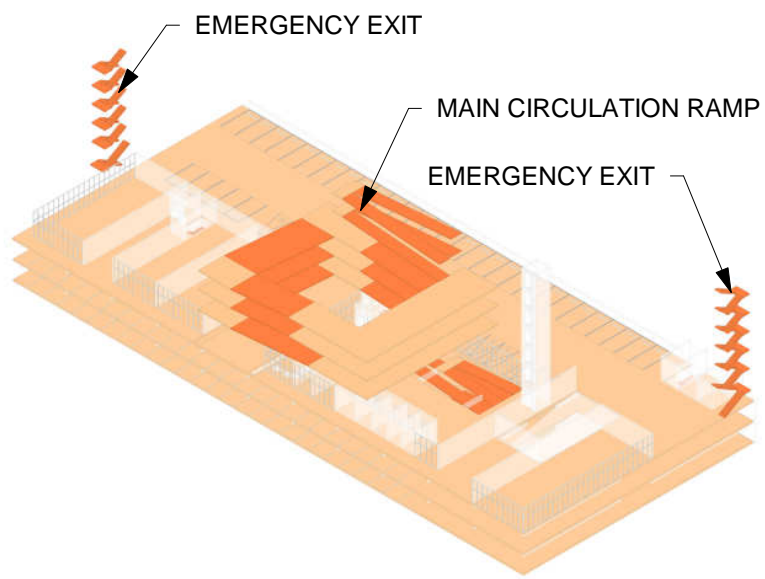


PRESENT MOMENTS

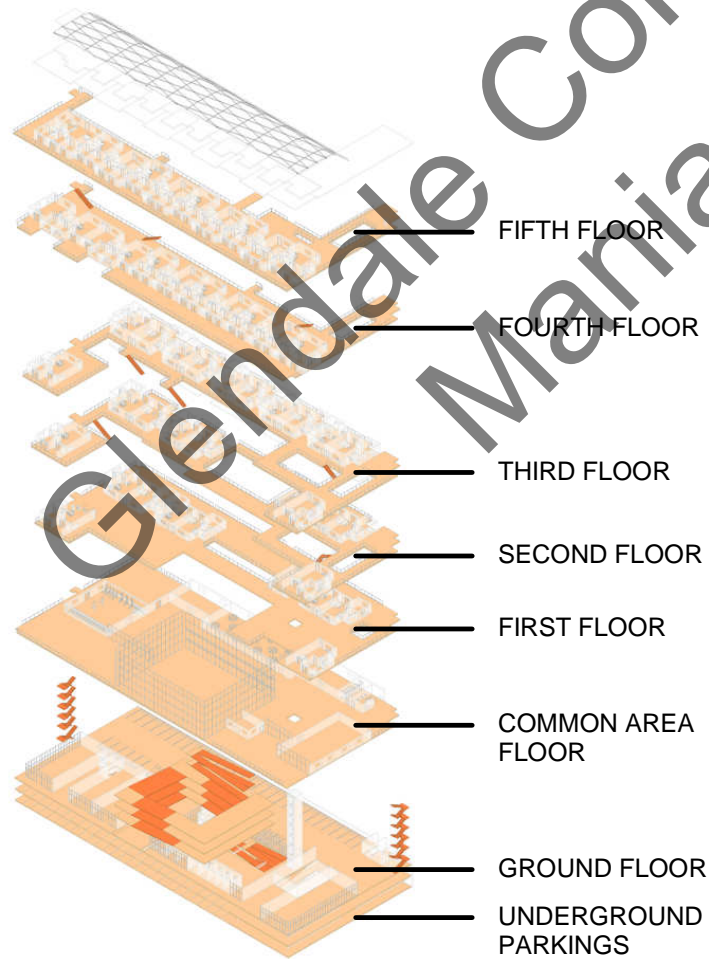
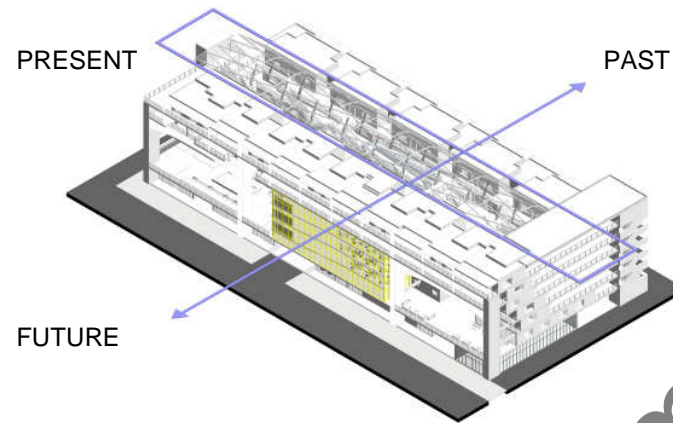
PEOPLE TO COMMEMORATE THOSE MOMENTS THROUGH SOCIAL INTERACTION



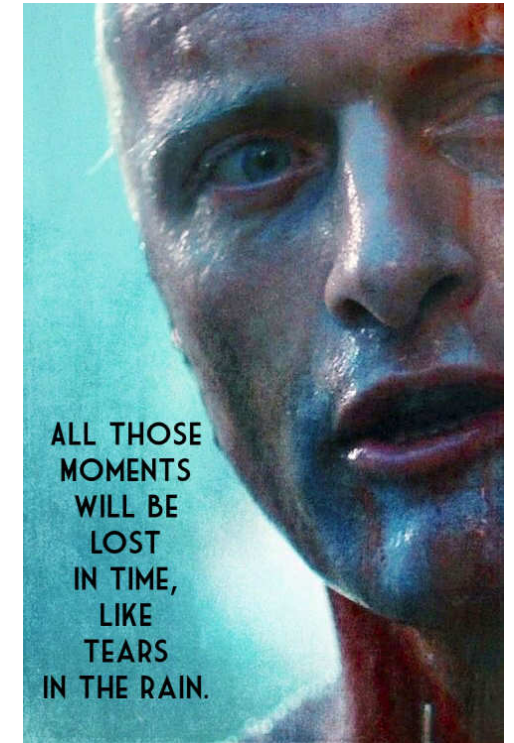
CIRCULATION DIAGRAM



LIVING UNITS SOCIAL INTERACTION



SOURCE OF INSPIRATION "WHAT DO ELDERLY PEOPLE WANT?"



LIBRARY/THEATER CURVED GLASS

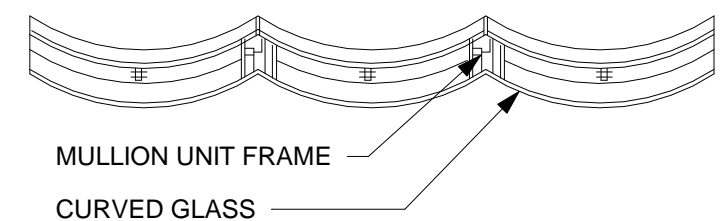
THE CURVED GLASS SIMULTANEOUSLY REPRODUCE AND DEMATERIALIZES THE IMAGE OF A PERSON WALKING BY IS TO EXHIBIT THE FUNCTION OF LIFE



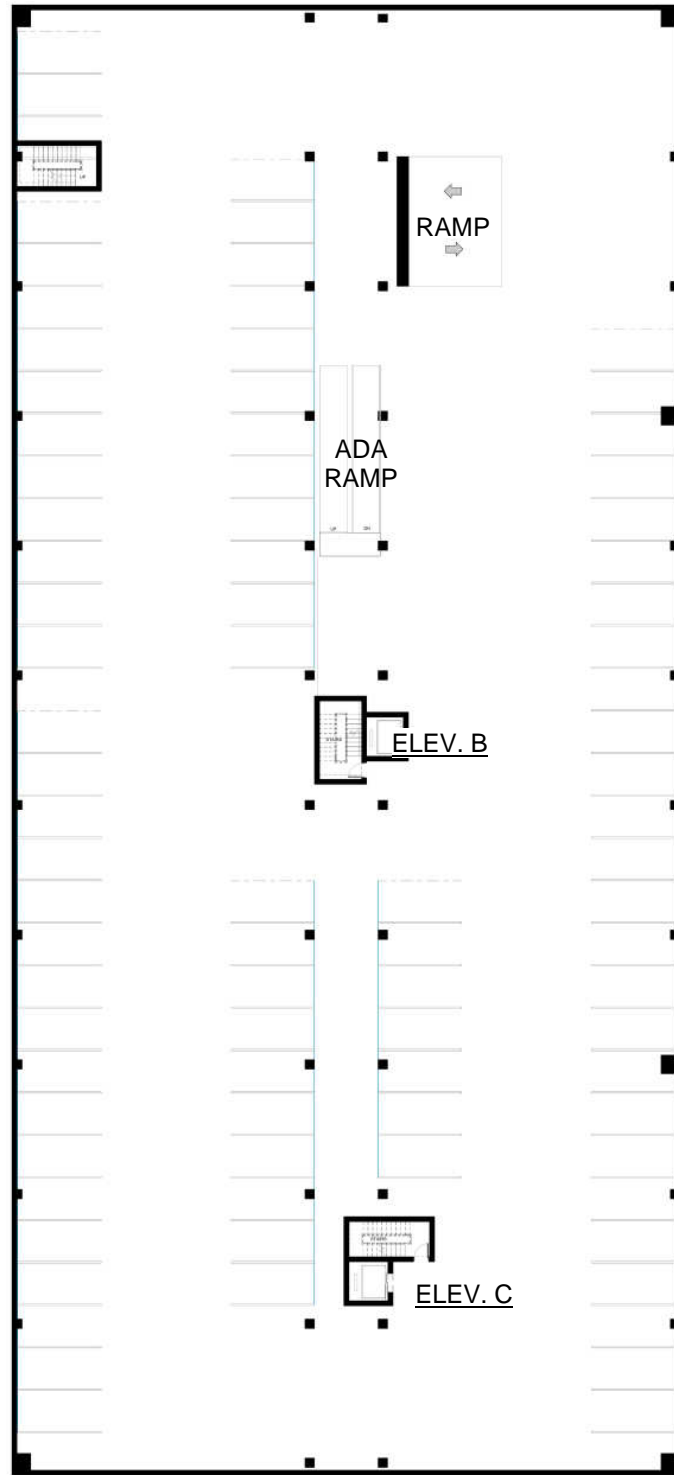
TIANJIN NORTH GLASS INDUSTRIAL TECHNICAL CO., LTD." NORTH GLASS"



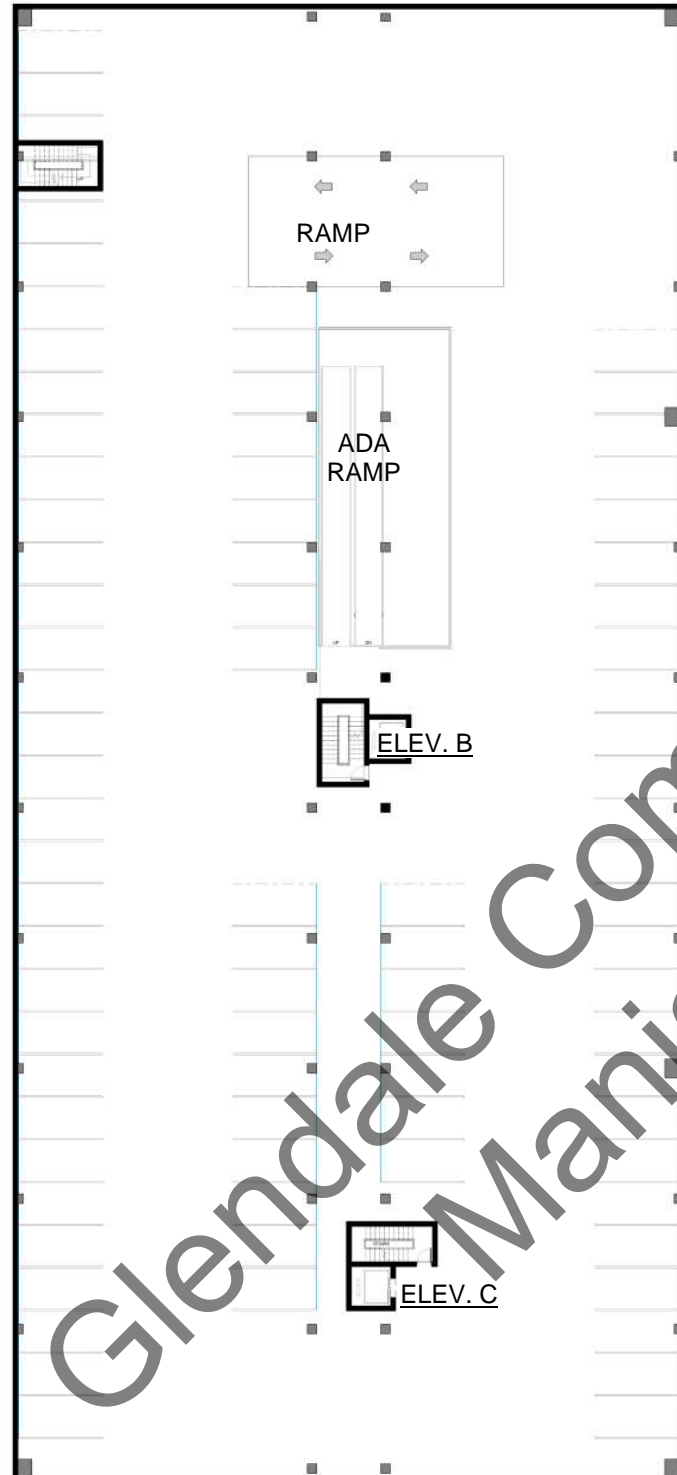
REPETITIVE MOMENTS



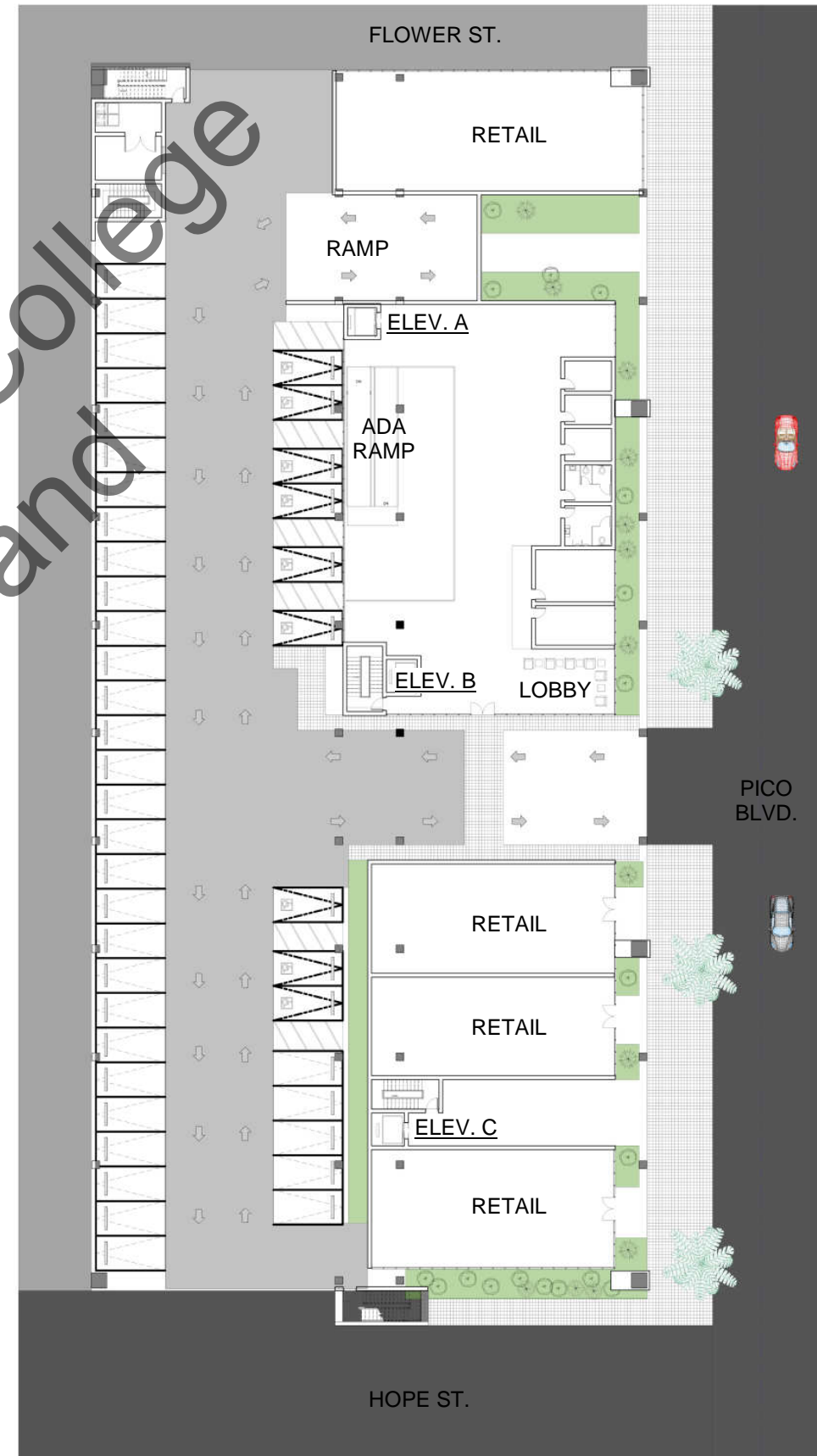
PARKING/GROUND FLOORS



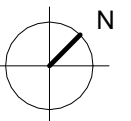
2ND PARKING FLOOR



1ST PARKING FLOOR



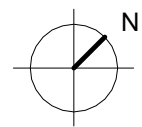
GROUND FLOOR



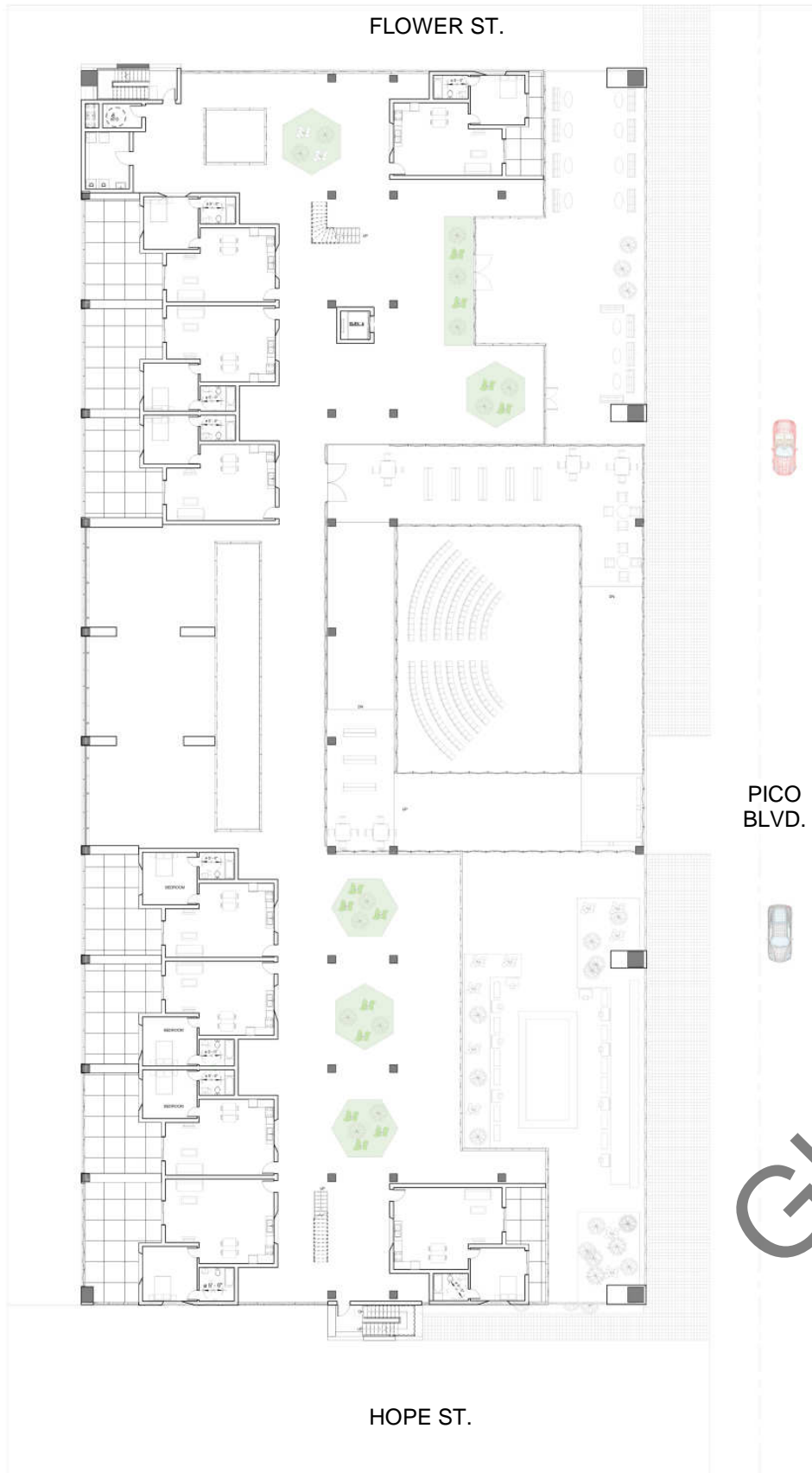
COMMON AREA FLOOR



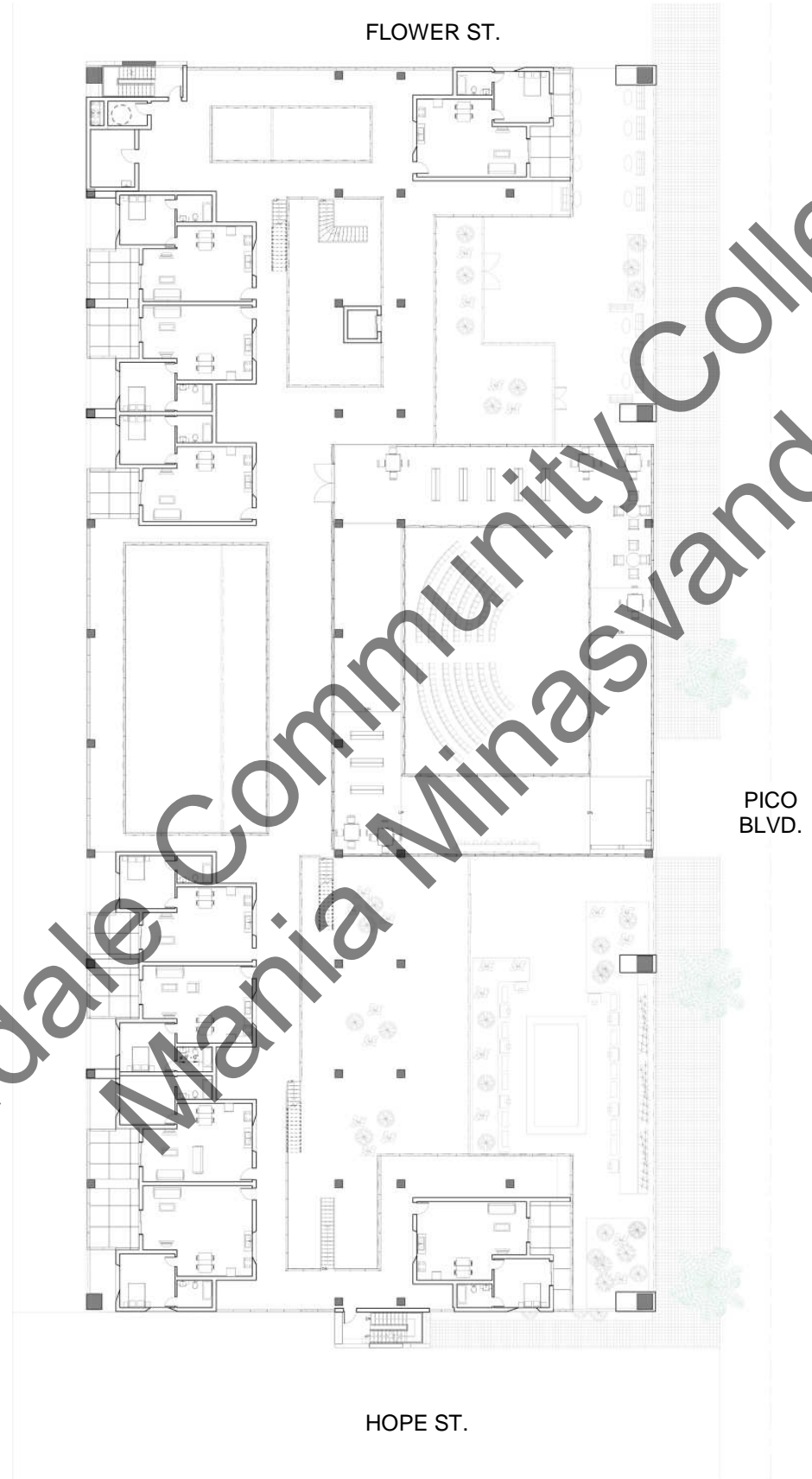
COMMON AREA FLOOR PLAN



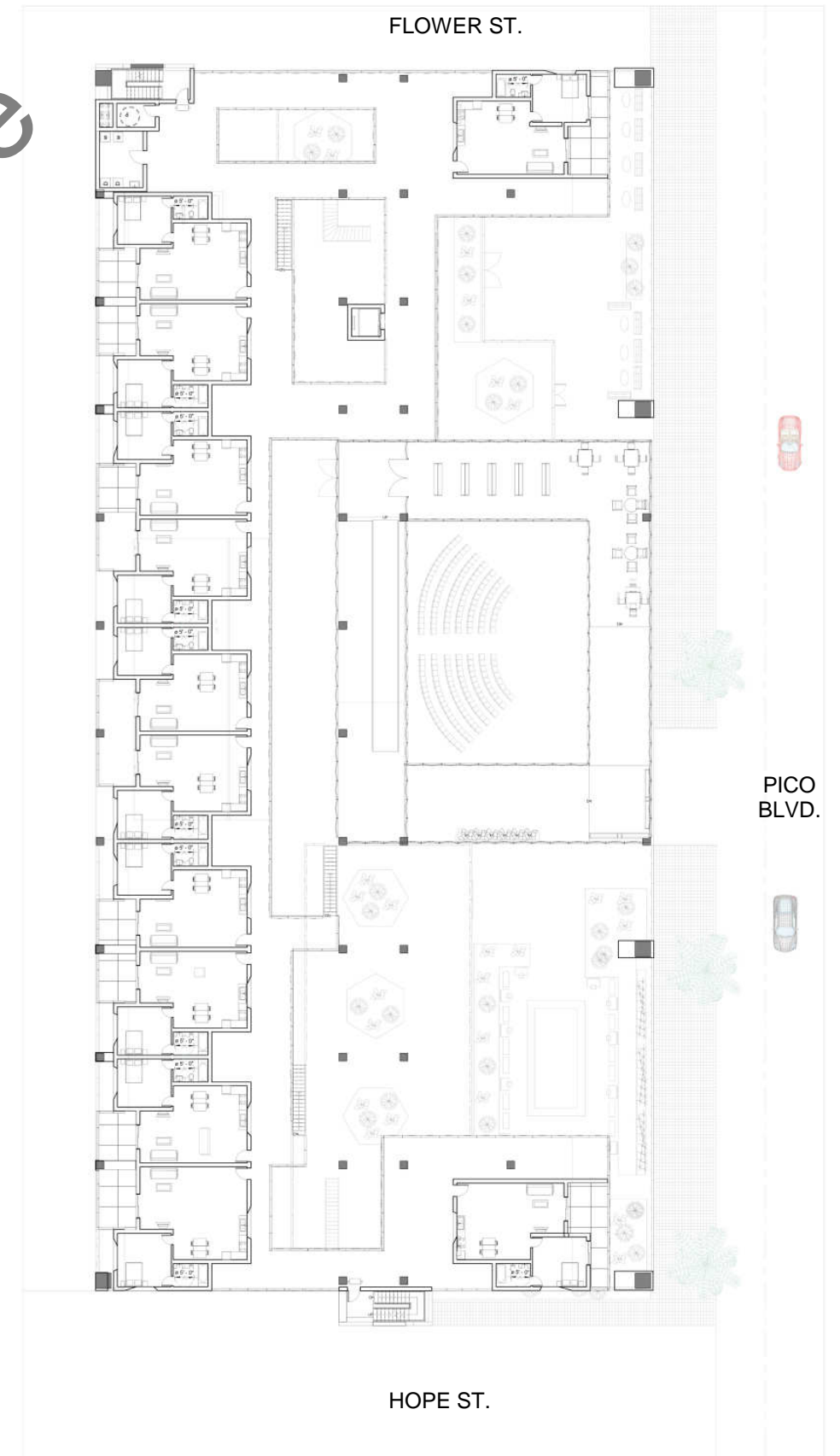
LIVING UNITS FLOOR PLANS



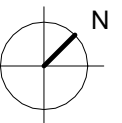
1ST FLOOR PLAN



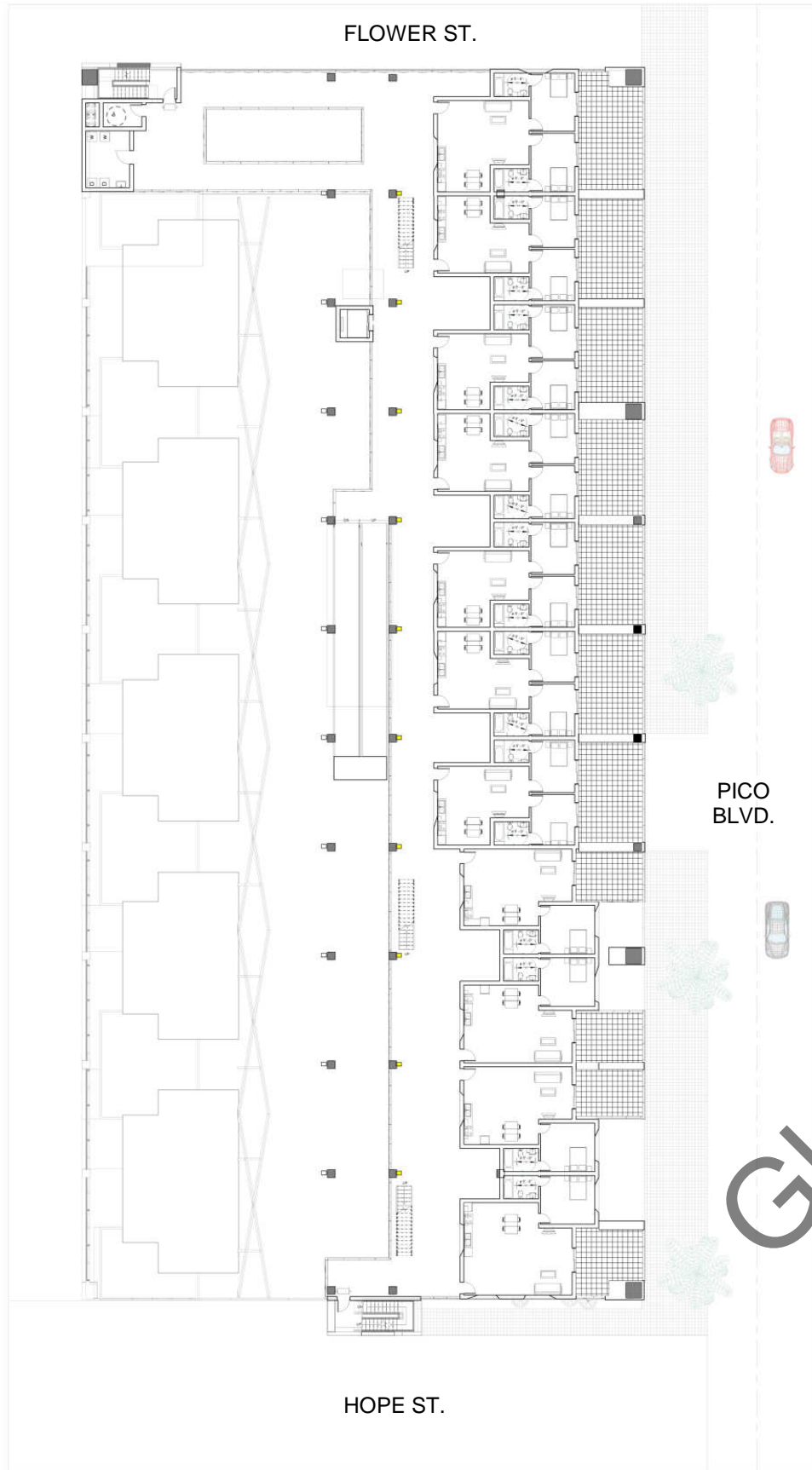
2ND FLOOR PLAN



3RD FLOOR PLAN



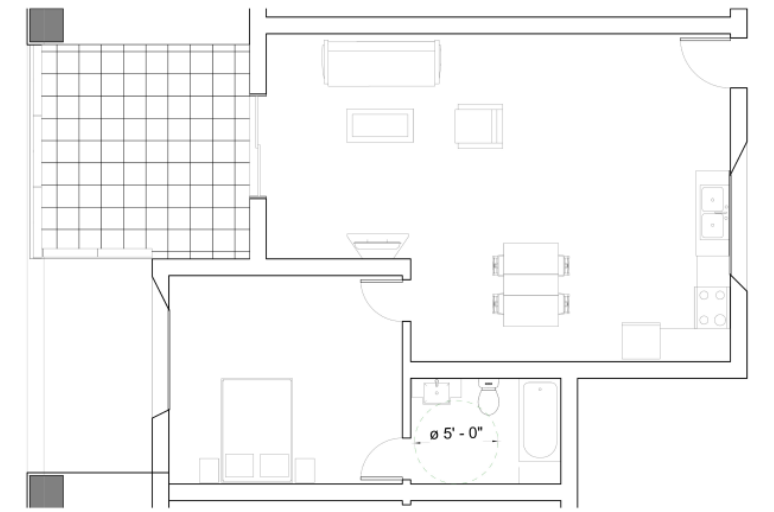
LIVING UNITS FLOOR PLANS



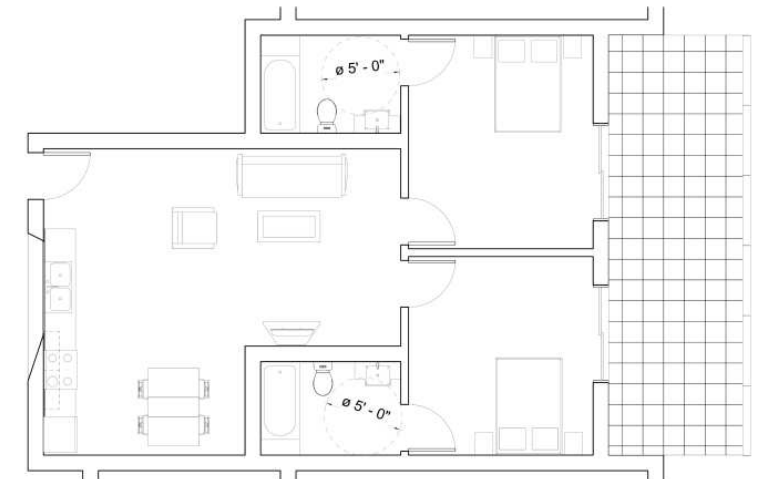
4TH FLOOR PLAN



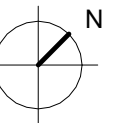
5TH FLOOR PLAN



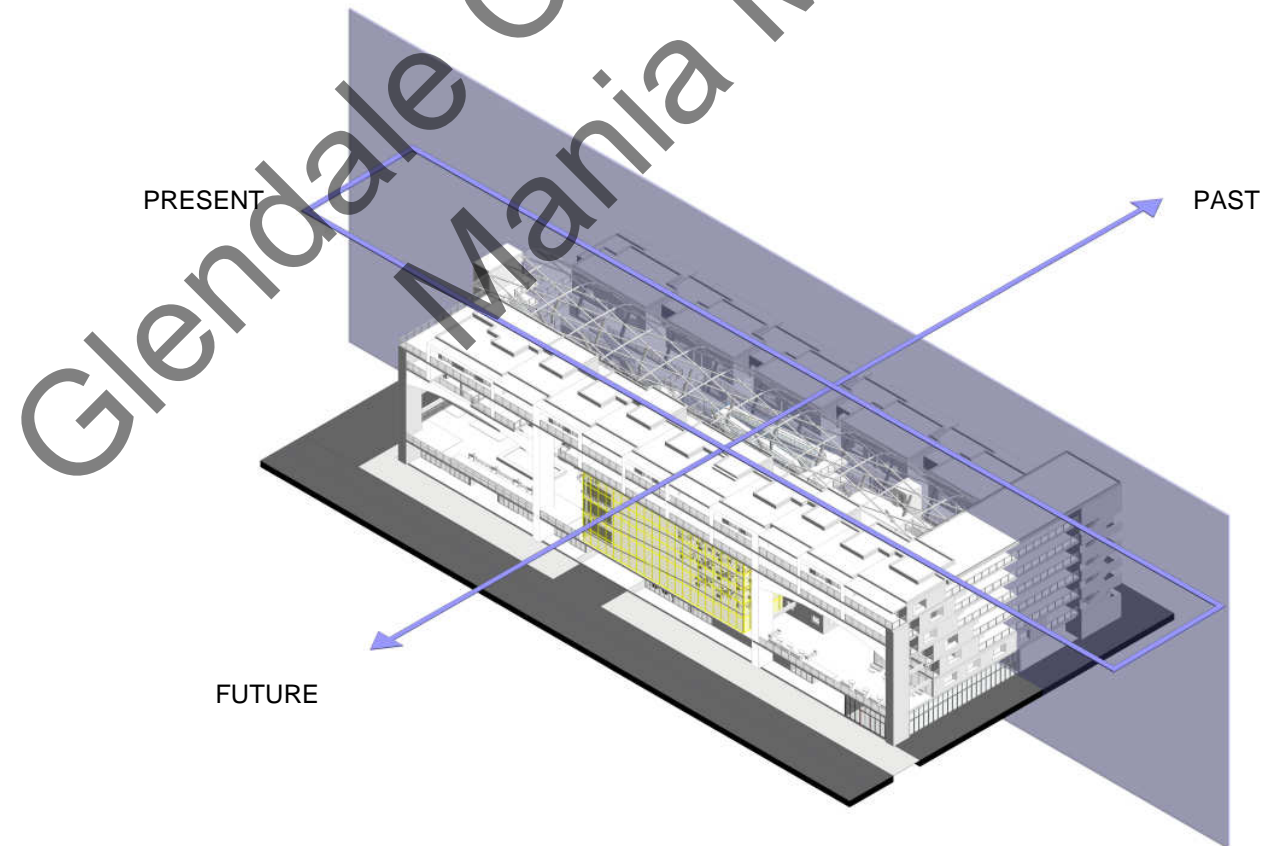
ONE BEDROOM UNIT



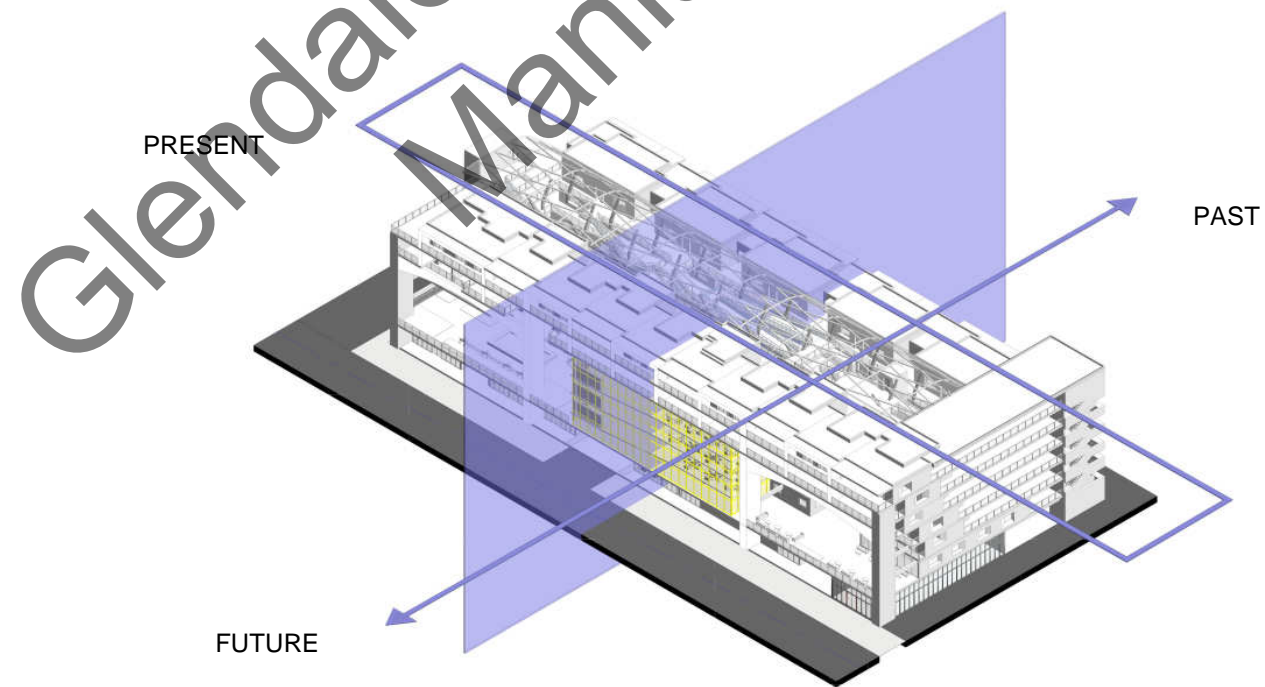
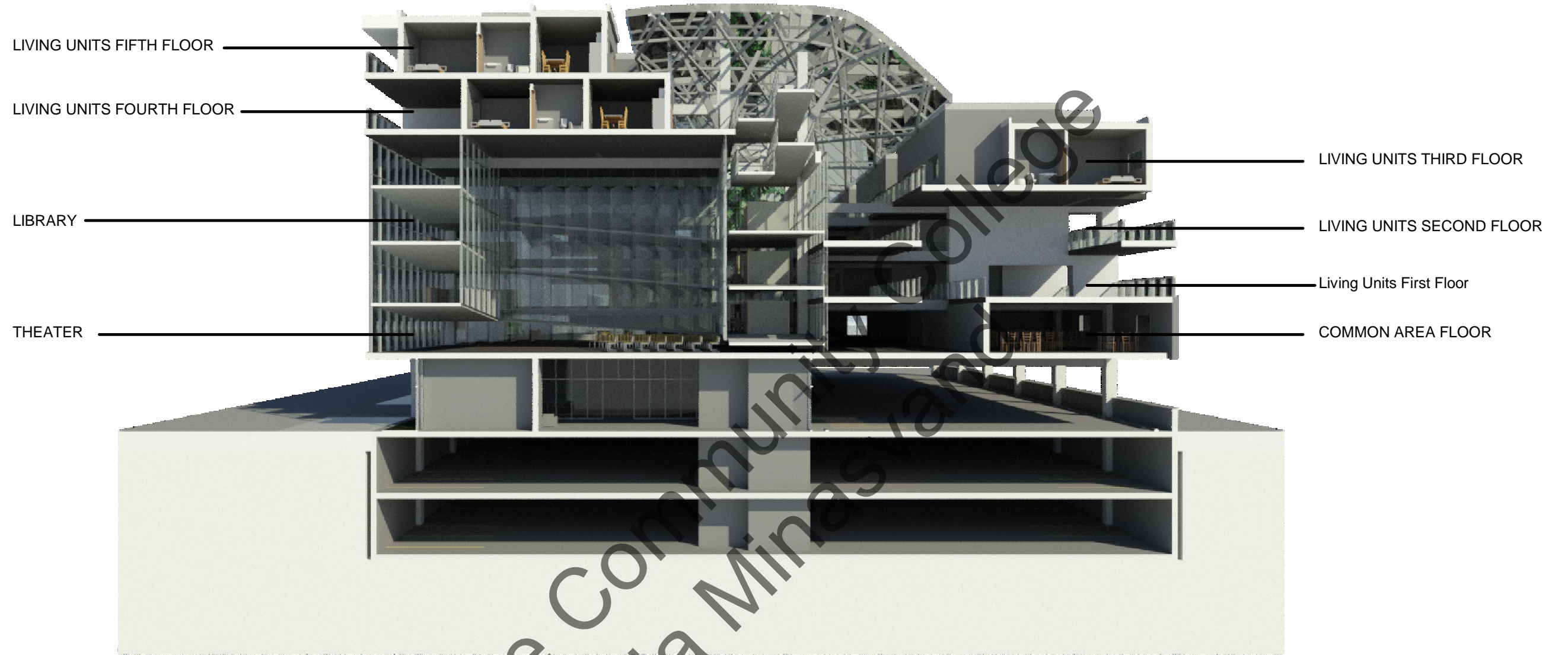
TWO BEDROOM UNIT



LONGITUDINAL SECTION



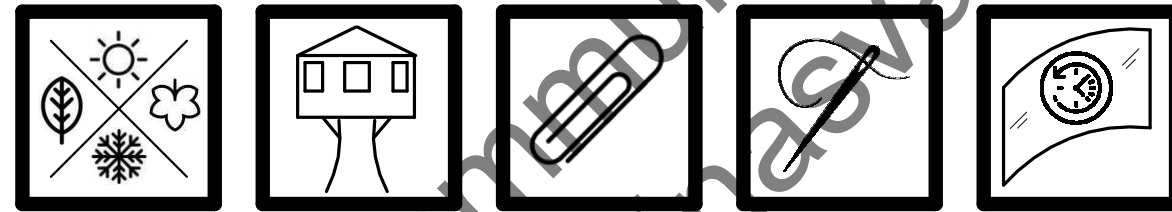
CROSS SECTION



"What do elderly people want?"
They want to leave a trace of their existence...



Glendale Community College
Mania Mirasvand



THANK YOU