

Architectural Portfolio

Glendale Community College 2017-2019

Long Ngu



Table of Context

2	Index, Skills, and Achievement
3	Mix Use Commerical Project at MacArthur Park
4	Site Plan
5	3 Circulation Diagrams Access to Residential Units
6	3 Circulation Diagrams Access to Child Care
7	3 Circulation Diagrams Access to Community Center
8	Isometric Floor Plans
9	Sections
10	Camera Views
11	Model
12	Mix Use Artist Villa
13	Diagrams
14	Floor Plans
15	Sections and Camera Views
16	House for Ambigram and Palindrome
17	Diagrams and Exploded view
18	Floor Plans
19	Model



Revit



Laser Cutting



AutoCAD



Model Making



SketchUp



Photoshop



Hand Sketching



3D Printing

2

Glendale Tech Week - 2018



Platform Return Community College Exhibition - 2019



Mix Use Commercial Project at MacArthur Park

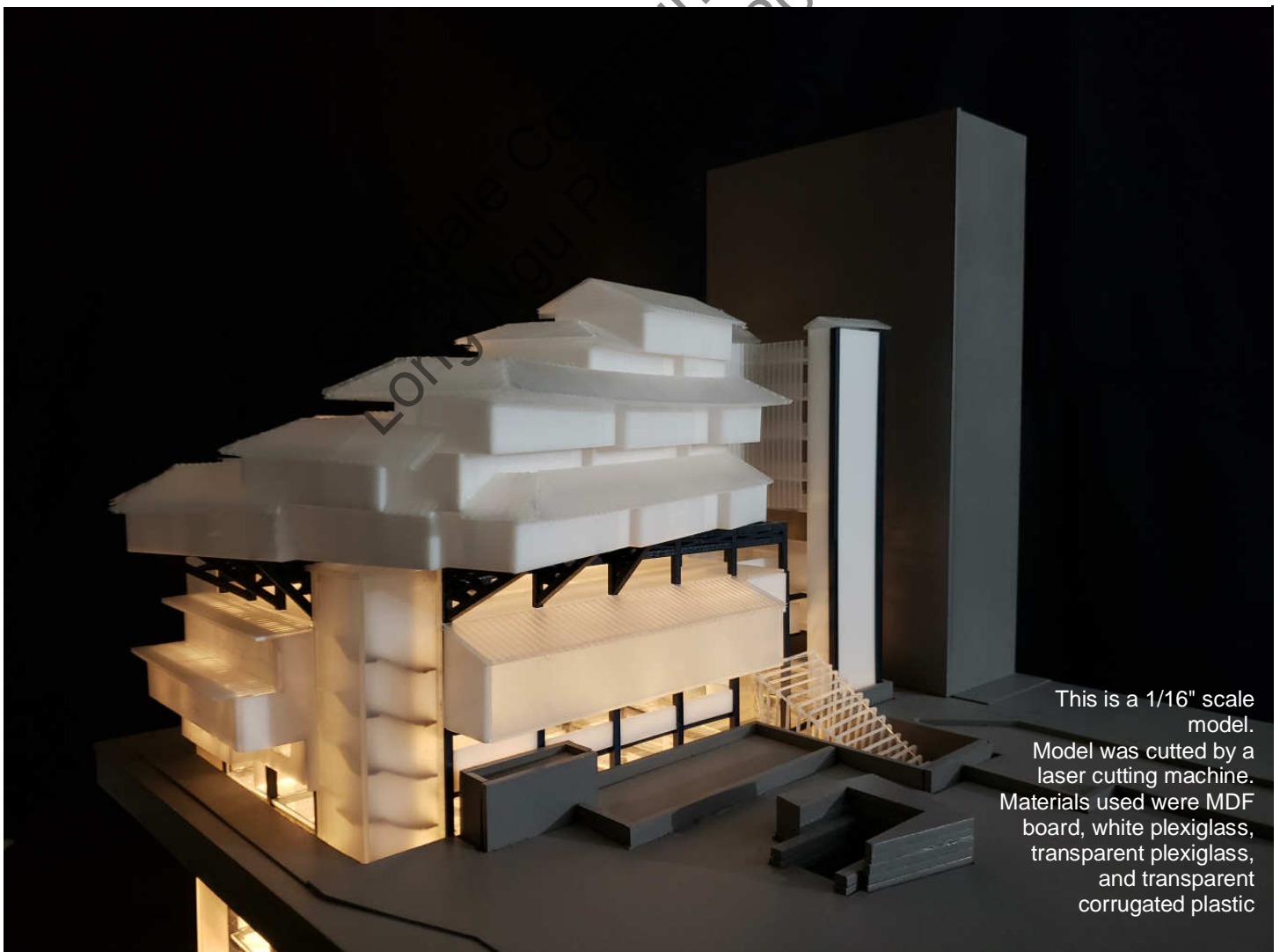
Commercial Architectural Design II - Arch 135

Individual Project

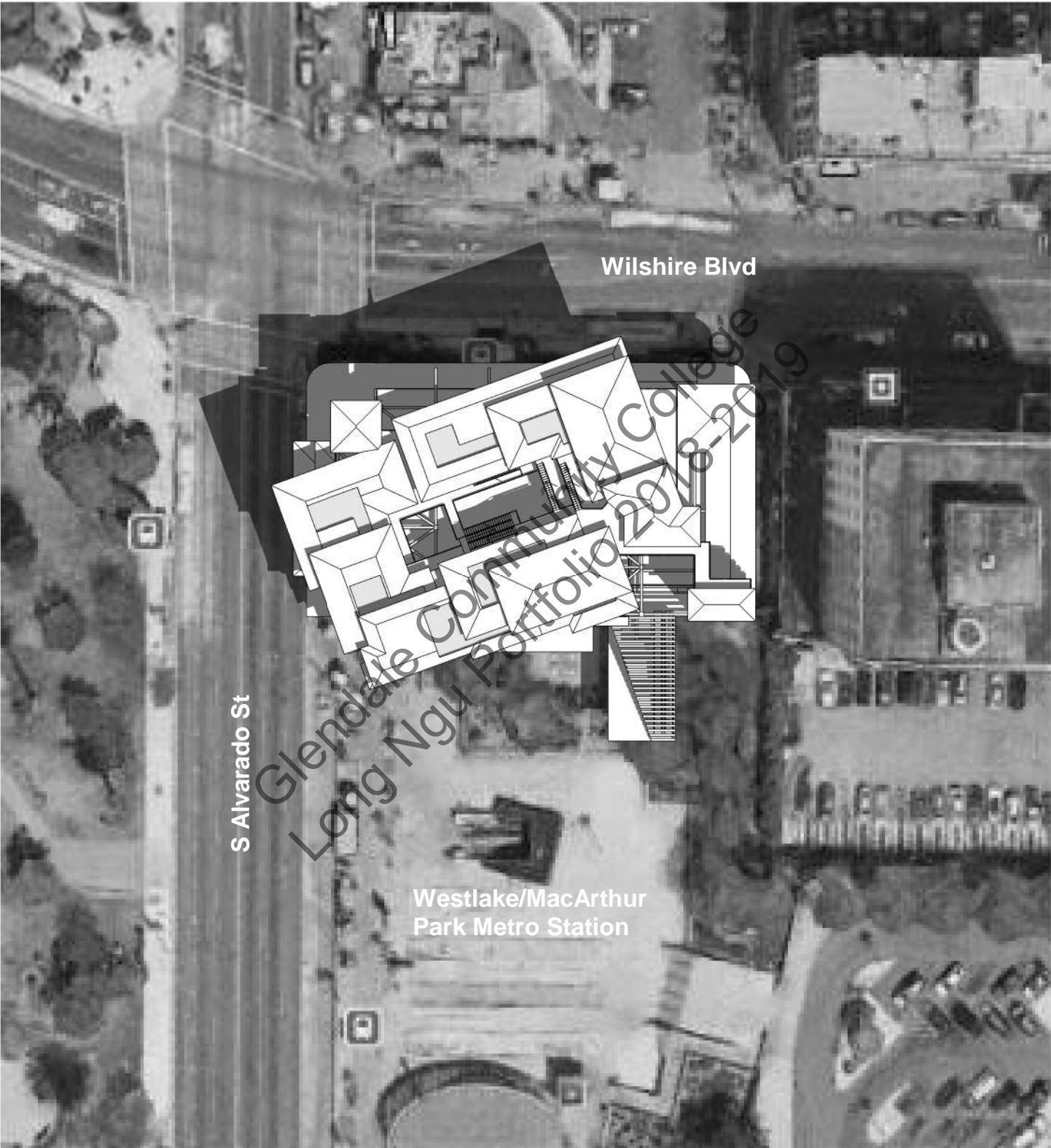
Instructor: Paul Chiu

Glendale Community College Summer 2018 (5 weeks)

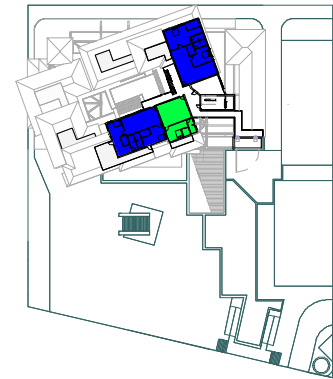
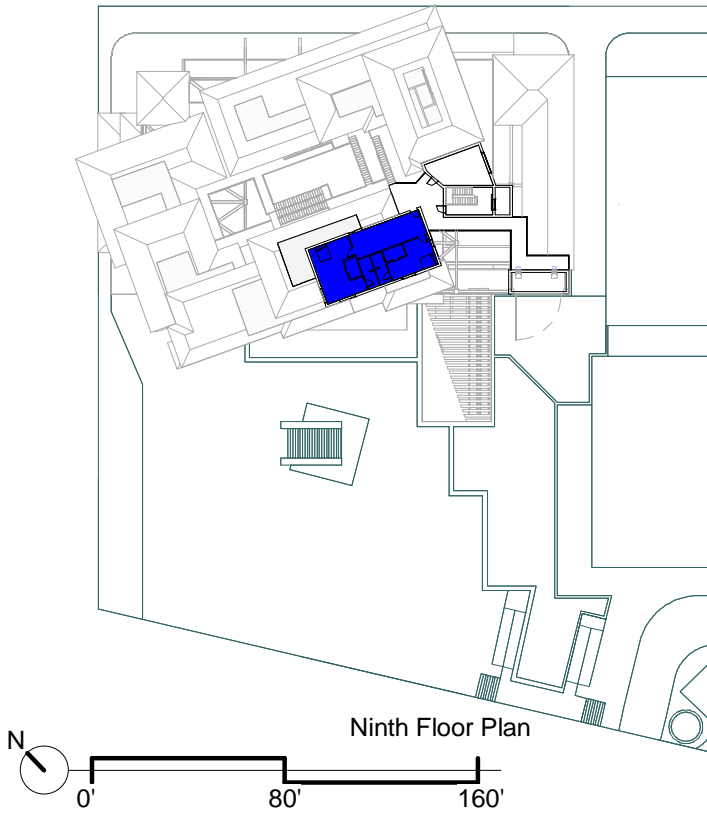
The building is a mix use complex located at 650 South Alvarado Street. The mix use complex must have a community center, child care center, apartment housing and a connection to the Metro station. There are three circulation towers which limit access to certain floors of the complex. The apartment housing designed like a village with balconies that are offset at an angle to framed the view of MacArthur Park. The apartment housing was designed with an inspiration from VIA 57 West residential building. Therefore, the number apartments required for the complex was a total of 25 which allow the pattern of 9,7,5,3, and 1 design.



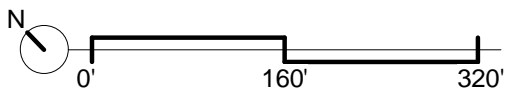
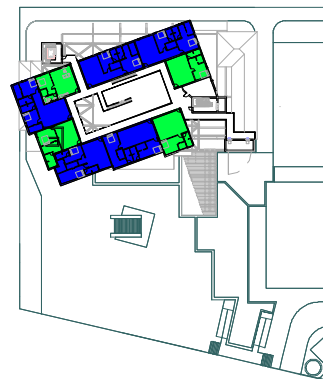
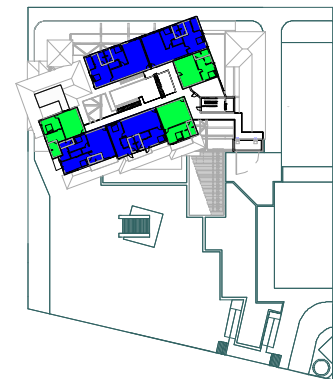
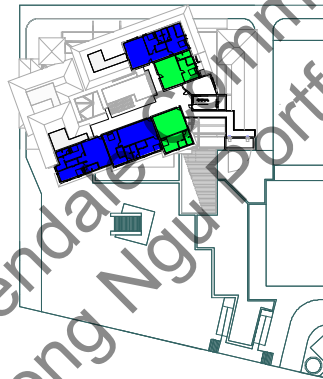
Mix Use Project Site Plan



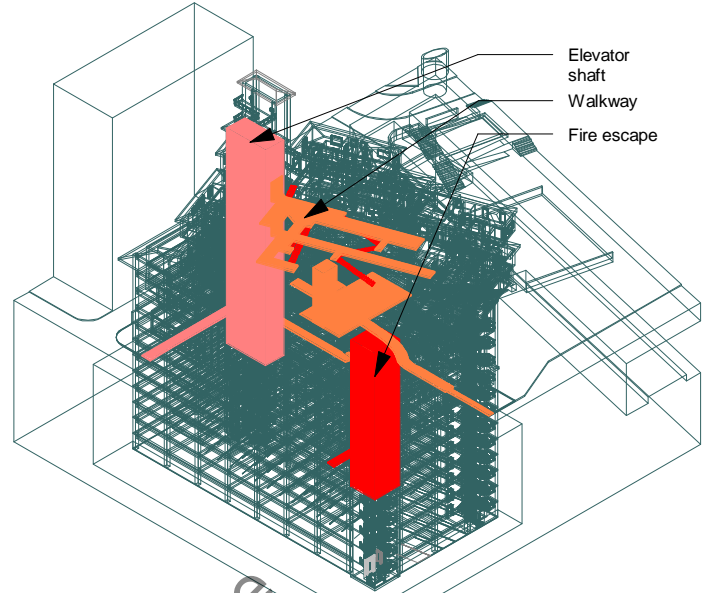
Residential Floor Plans



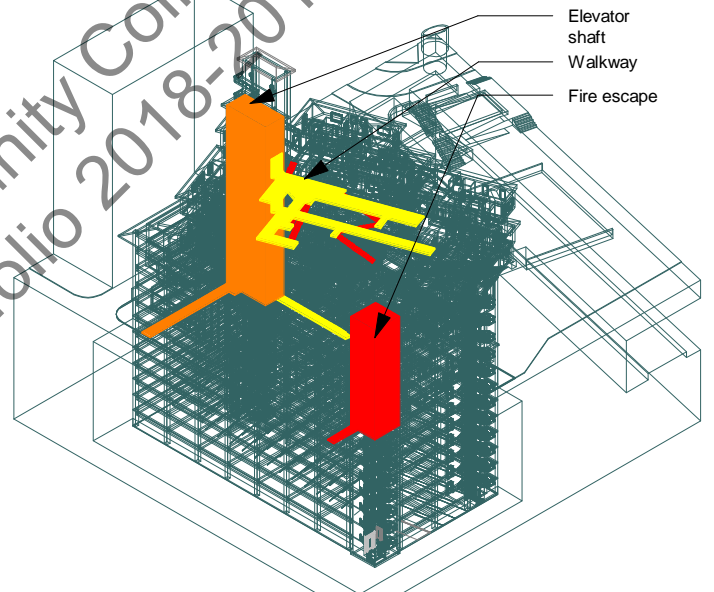
■ Single bedroom
■ Two bedroom



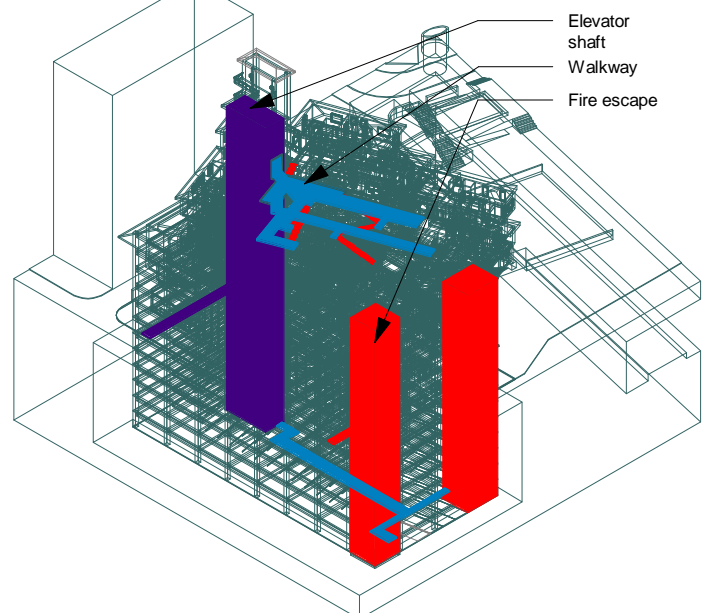
Metro Level to Residential Units



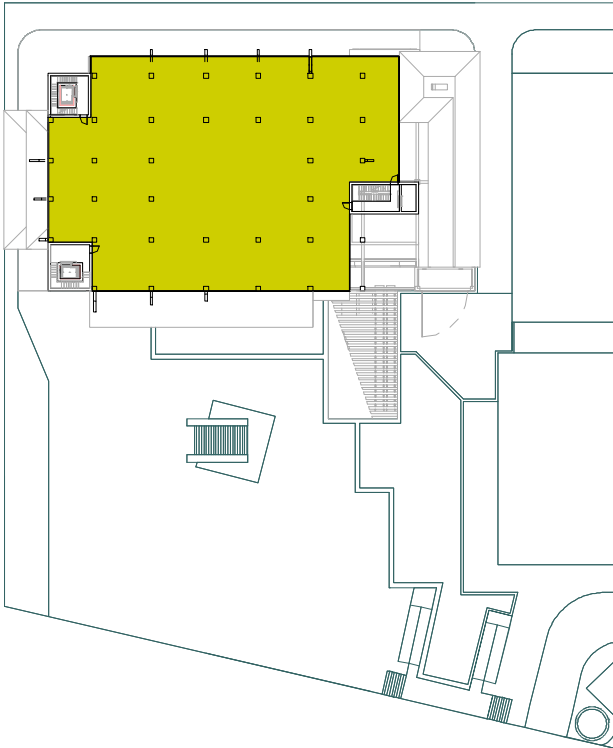
Street Level to Residential Units



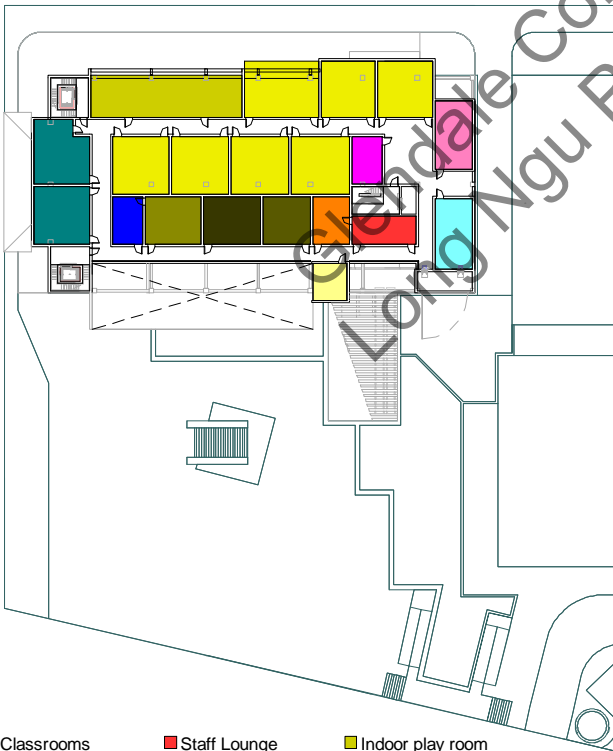
Parking Level to Residential Units



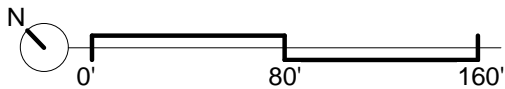
Outdoor Play Area (Fourth Floor Plan)



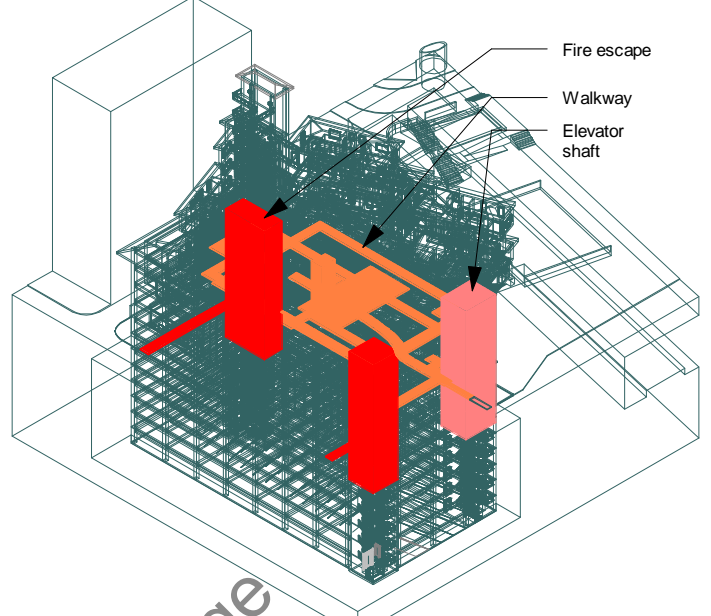
Third Floor Plan



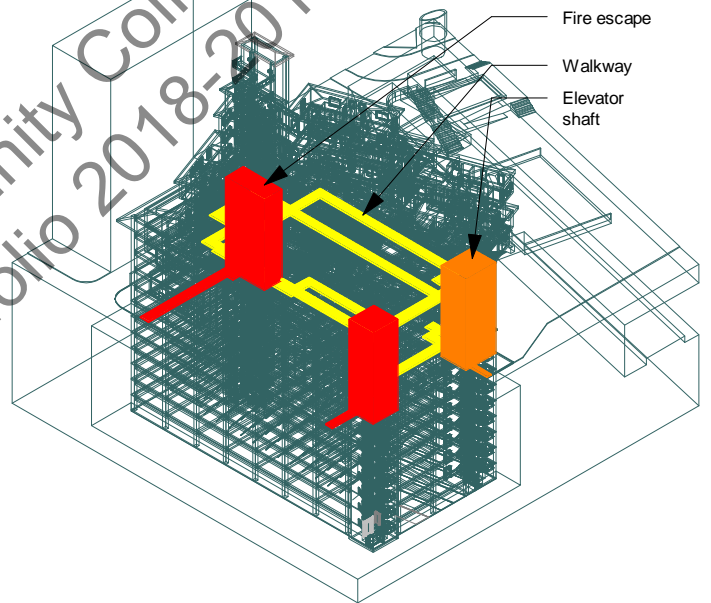
- | | | |
|------------------|--------------|------------------|
| Classrooms | Staff Lounge | Indoor play room |
| Conference rooms | Laundry room | Femal restroom |
| Parent room | Sick bay | Male restroom |
| Director office | Staff office | Pantry |
| | | Storage |



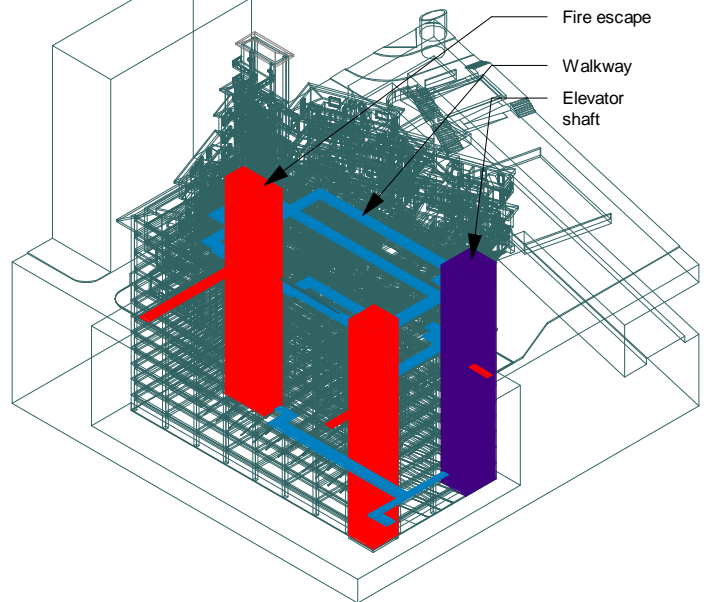
Metro Level to Child Care Center



Street Level to Child Care Center

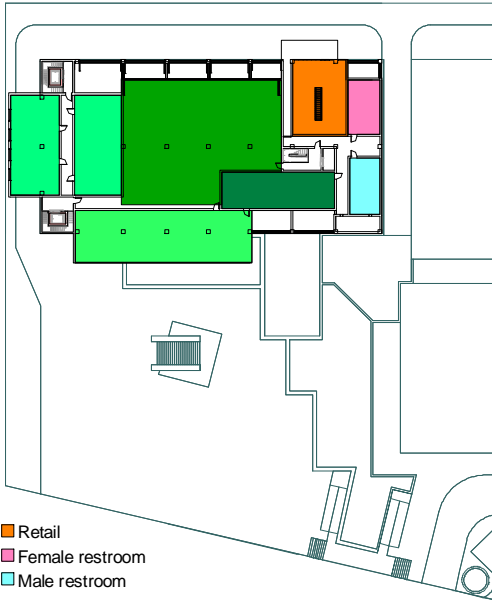


Parking Level to Child Care Center

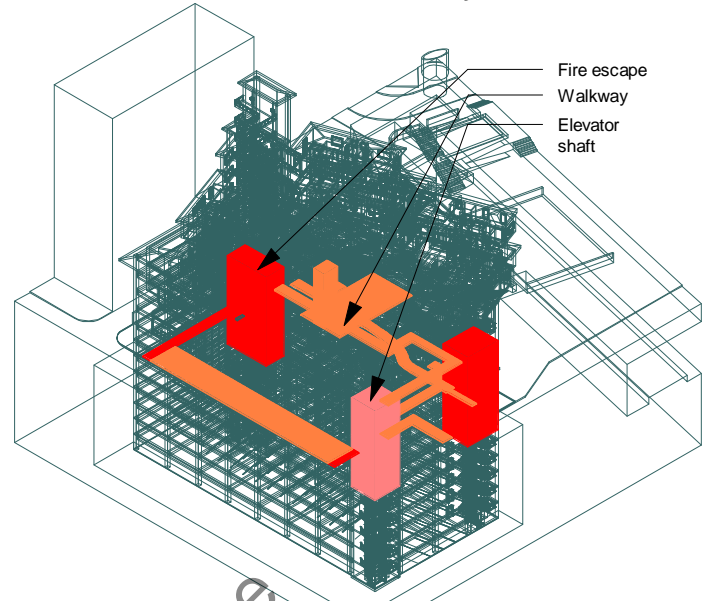


Glendale Community College
Lora Ngu Portfolio 2018-2019

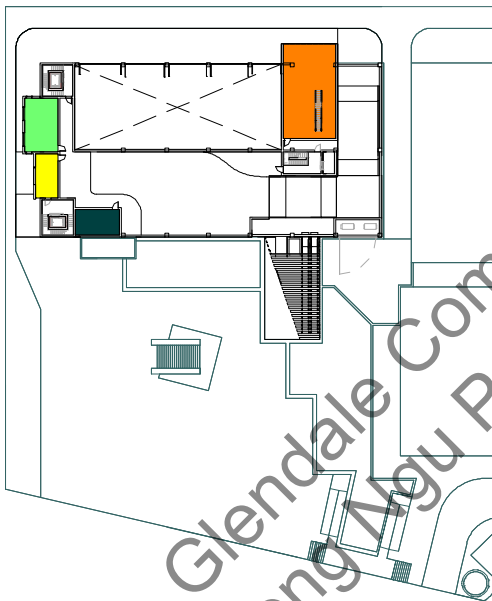
Second Floor Plan



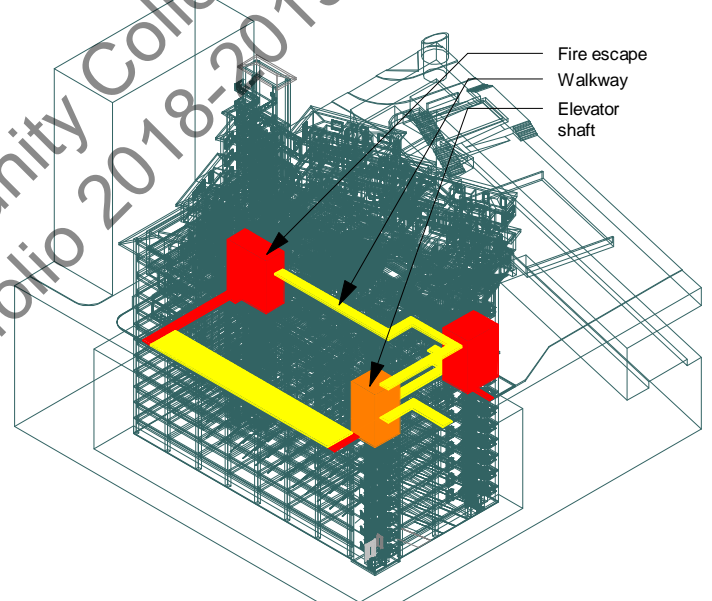
Metro Level to Community Center



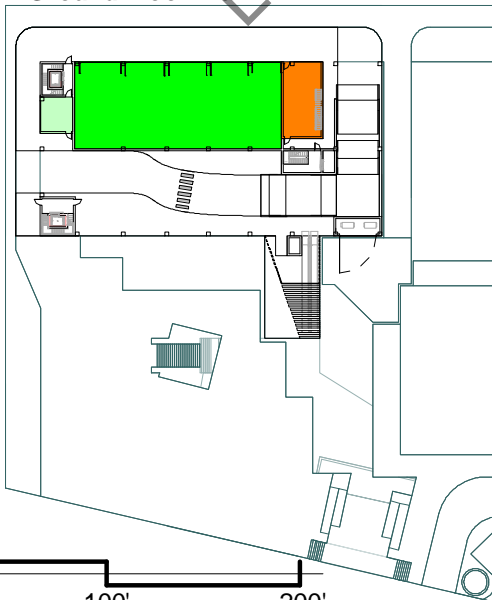
First Floor Plan



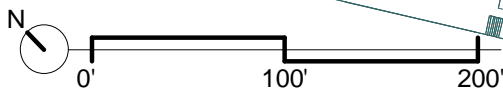
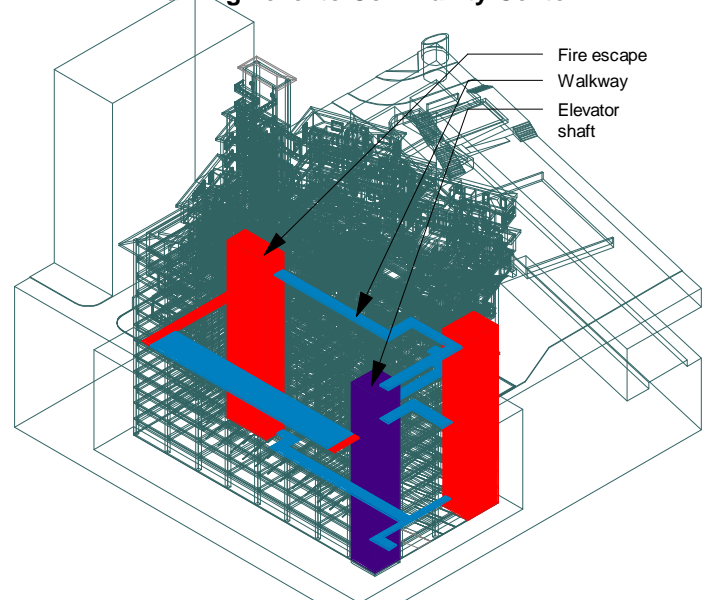
Street Level to Community Center



Ground Floor Plan

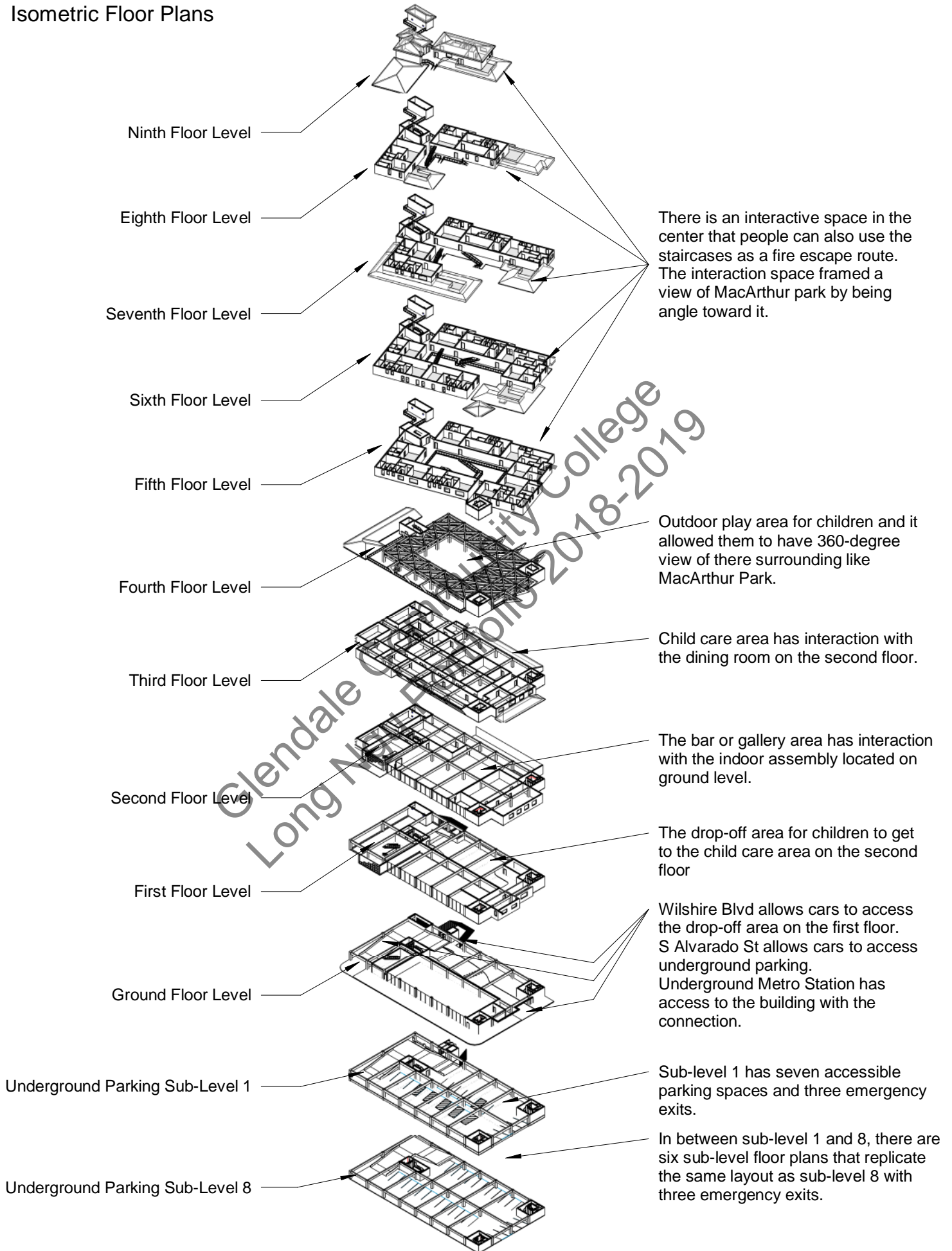


Parking Level to Community Center

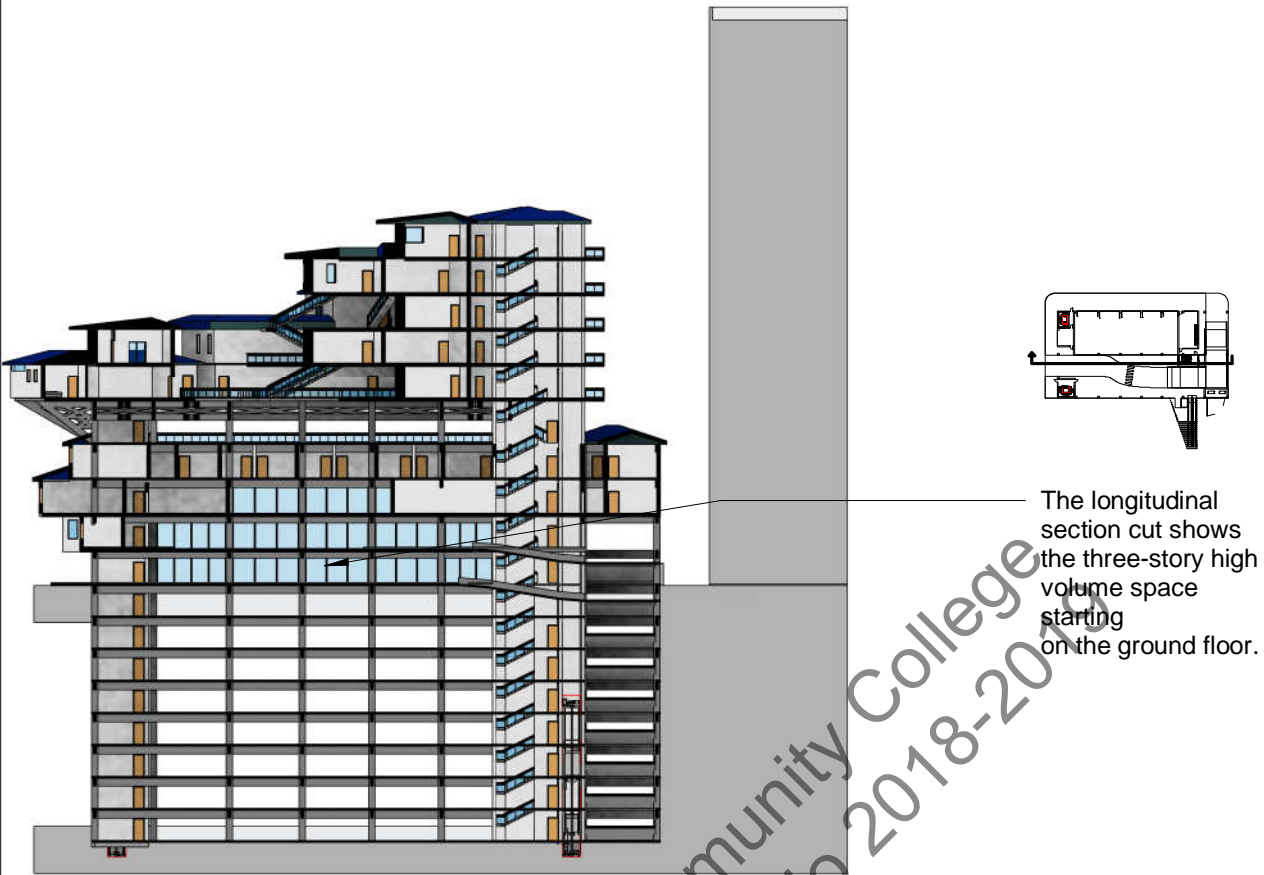


Glendale Community College
 Long Anu Portfolio 2018-2019

Isometric Floor Plans

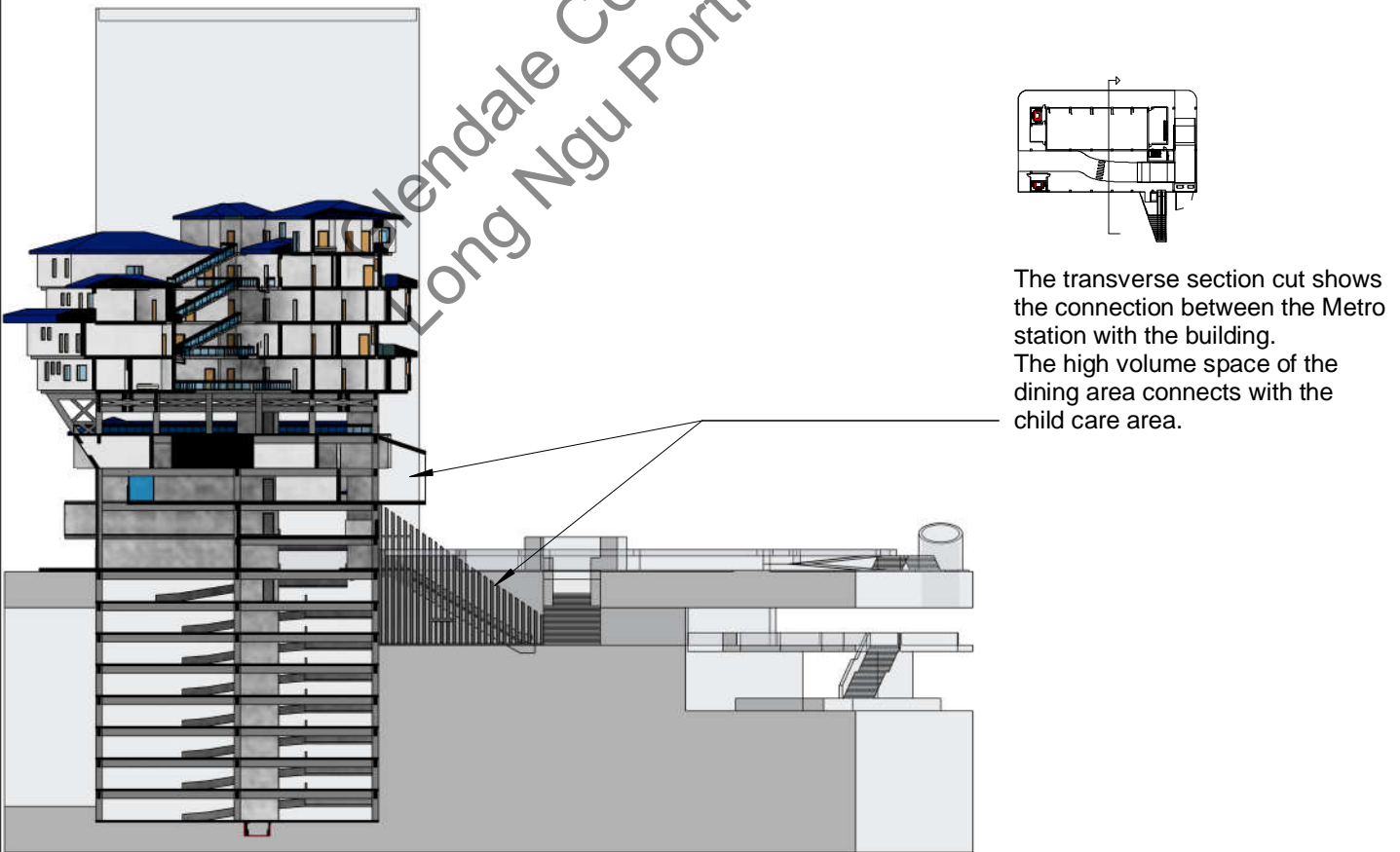


Longitudinal Section Cut



The longitudinal section cut shows the three-story high volume space starting on the ground floor.

Transverse Section Cut

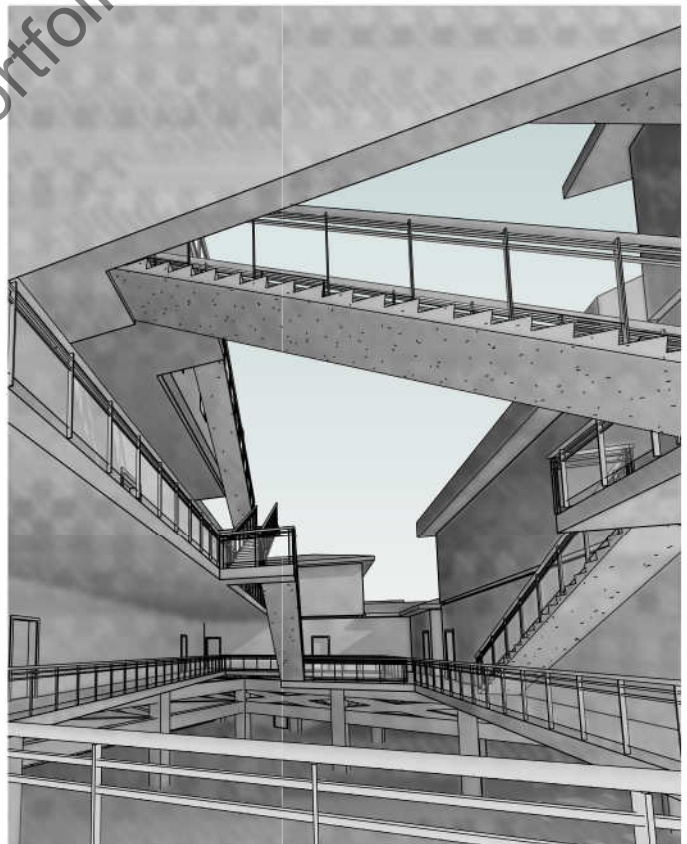
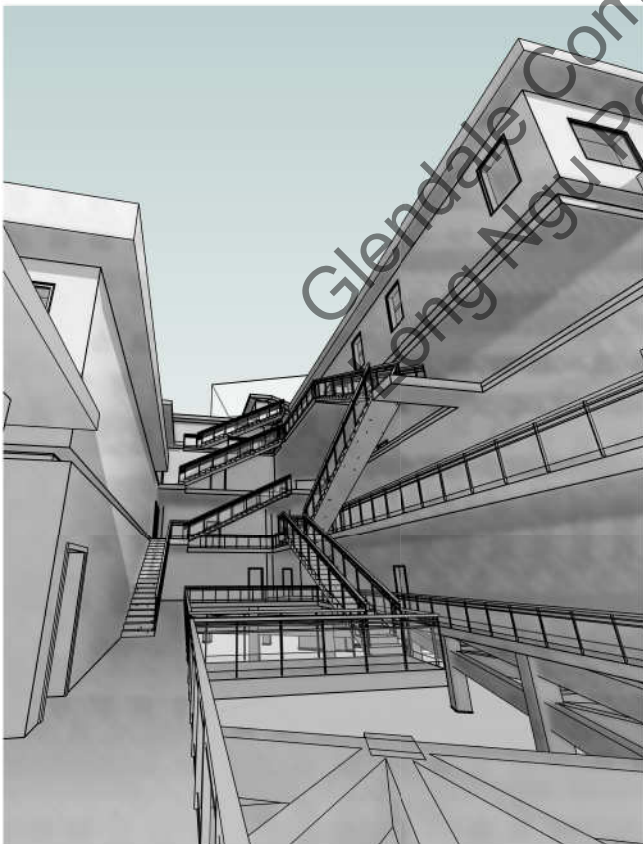


The transverse section cut shows the connection between the Metro station with the building. The high volume space of the dining area connects with the child care area.

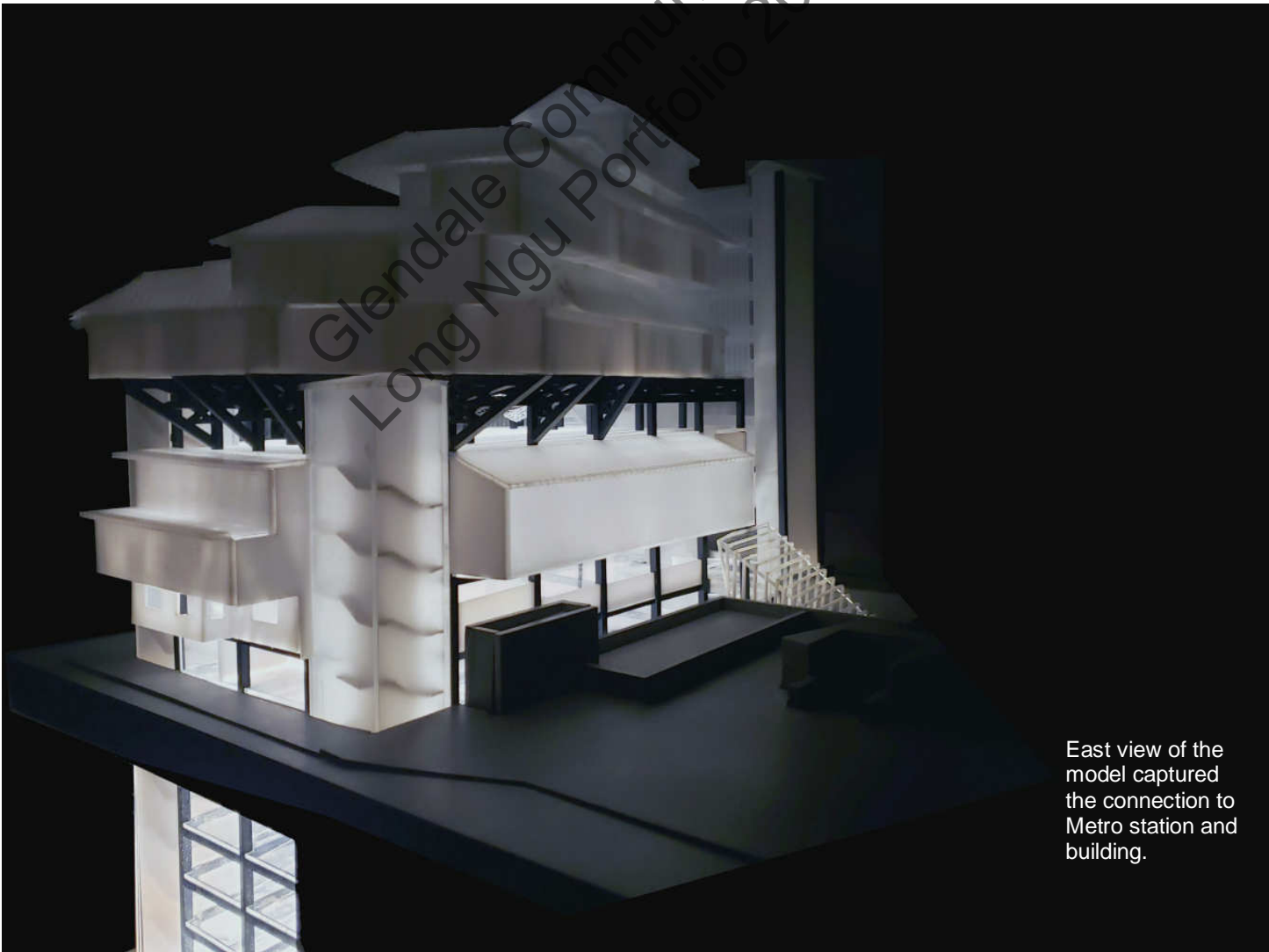
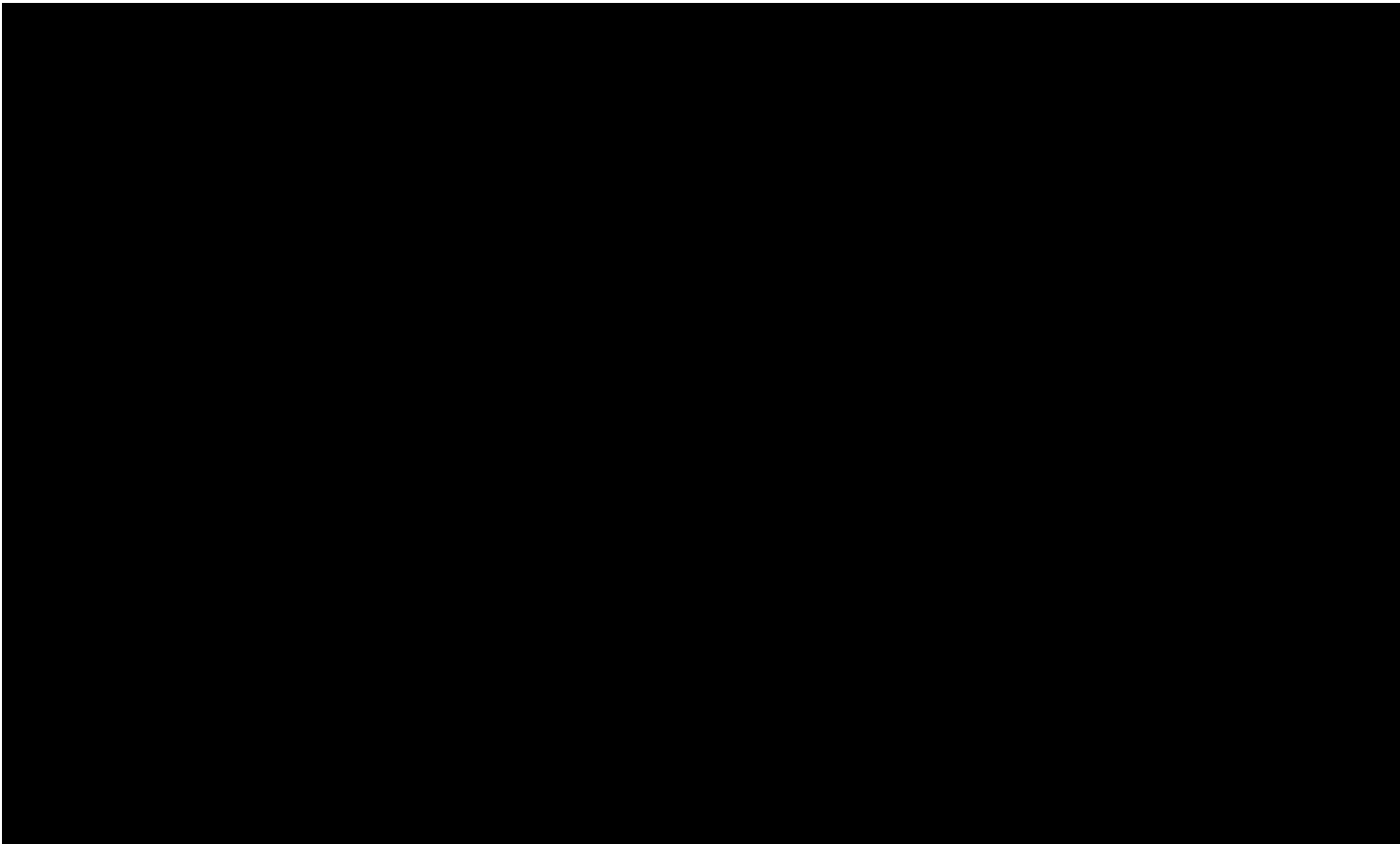
Apartment Corridor View Facing MacArthur
Park



10



Apartment Corridor View



East view of the model captured the connection to Metro station and building.

Mix Use Artist Villa

Residential Architectural Design II - Arch 135

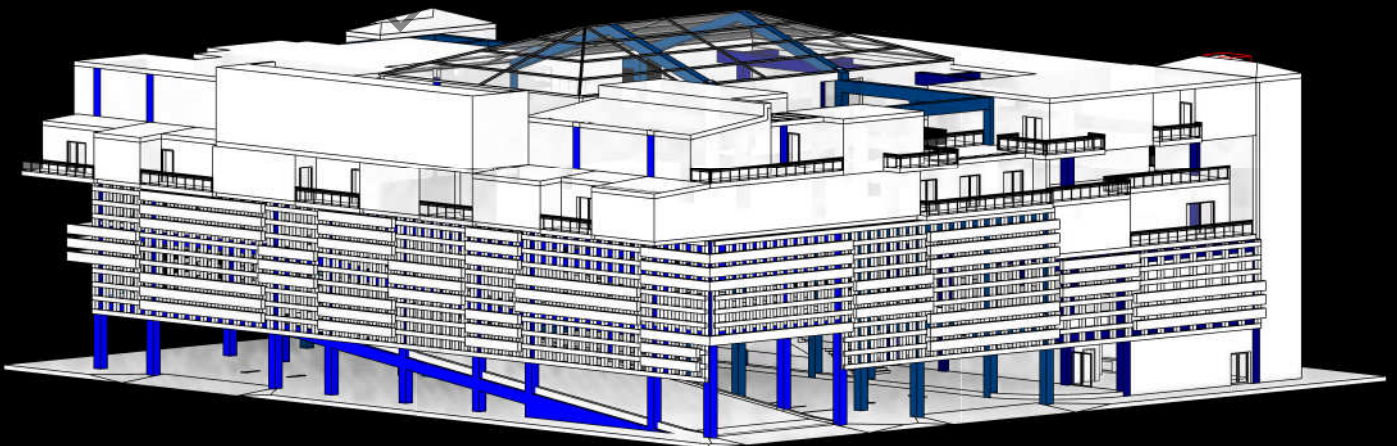
Individual Project

Instructor: Paul Chiu

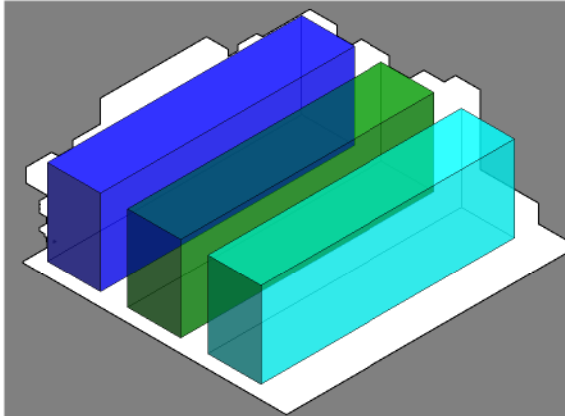
Glendale Community College Spring 2018 (16 weeks)

This project based on a 3 bar case study project located in Florida. The 3 bar was one of Lewis Tsurumaki Lewis ideas. For the assignment, students have to integrate their case study with a profession of their choice. Originally the 3 bar had parking structure, retails, and living and office mix together. The mixing of living spaces with office inspired the idea of have a private studio space for artist but at the same have shared studio spaces to represent the artist community. The walls of the building were inspired by graffiti artists, who sprayed walls, freeway bridge, etc. A huge stair in the center was inspired by the Mosaic Steps on 16th Avenue in San Francisco, therefore, another place for artists to use as a canvas. By redesigning the 3 bar to better an artist villa that there should be interacting spaces to share the art and well as place to sell or buy supplies.

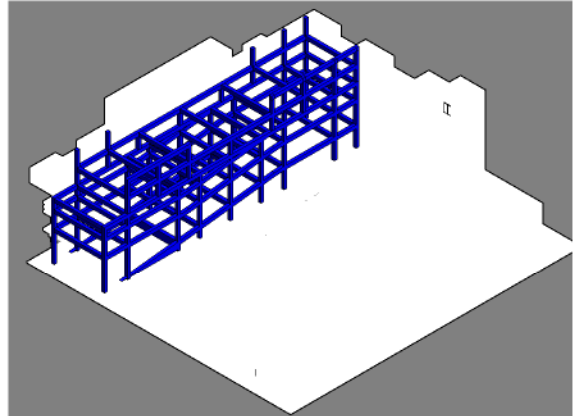
12



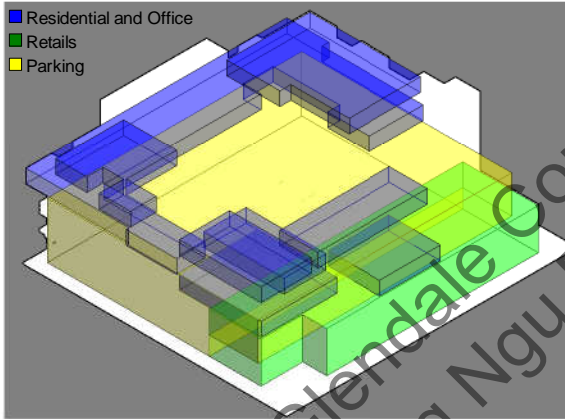
Parti Diagram



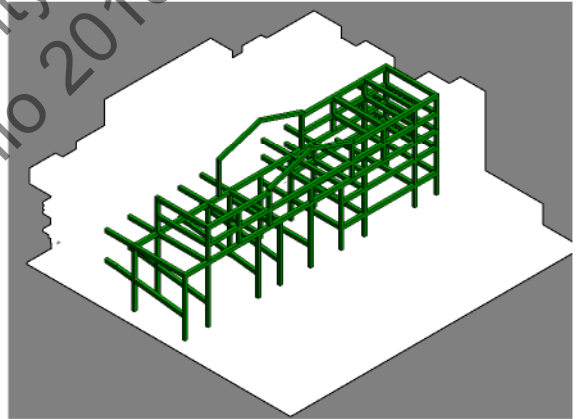
Left Structure Diagram



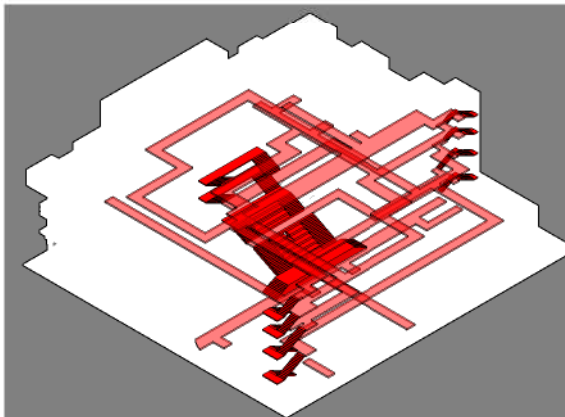
Program Diagram



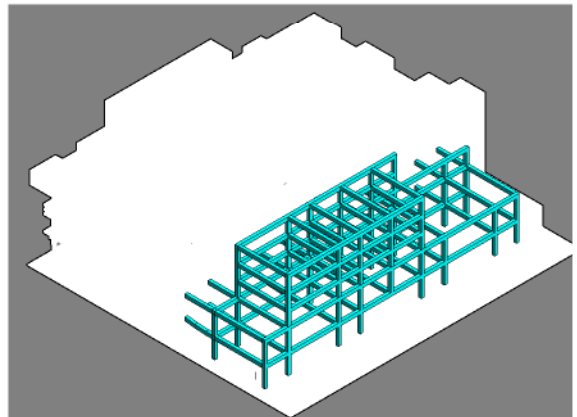
Center Structure Diagram



Circulation Diagram

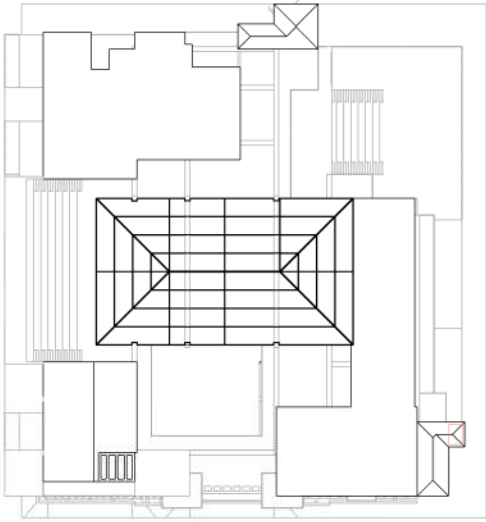


Right Structure Diagram

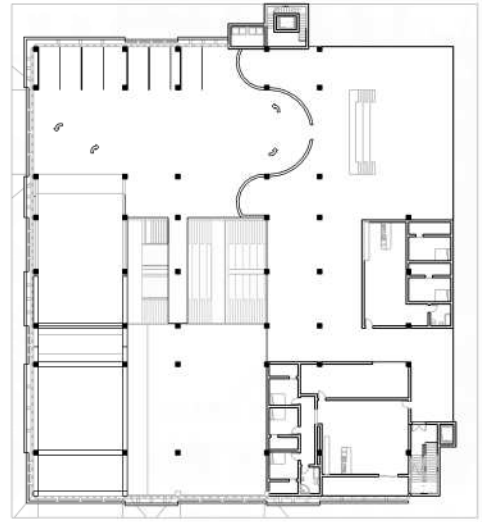


Glendale Community College
Long Ngu Portfolio 2018-2019

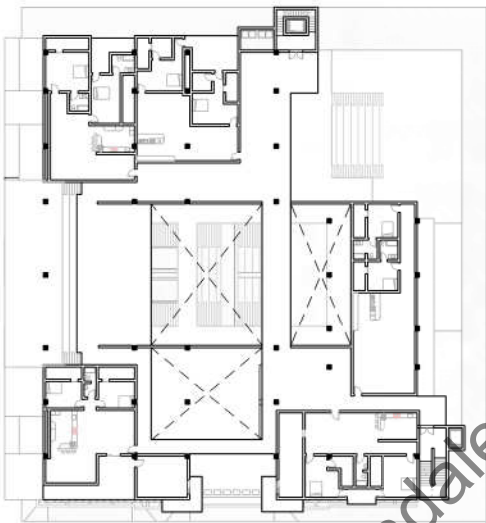
Site Plan



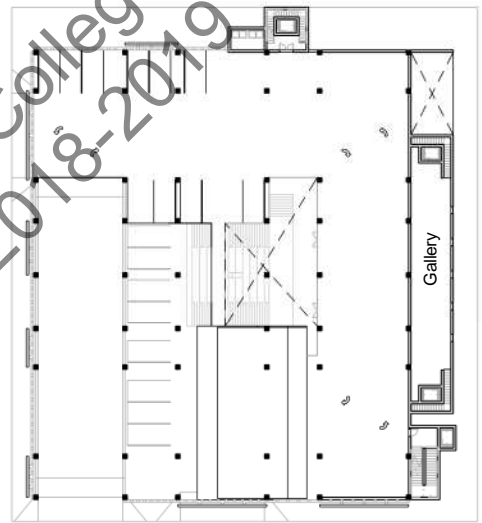
Second Level Parking Floor Plan



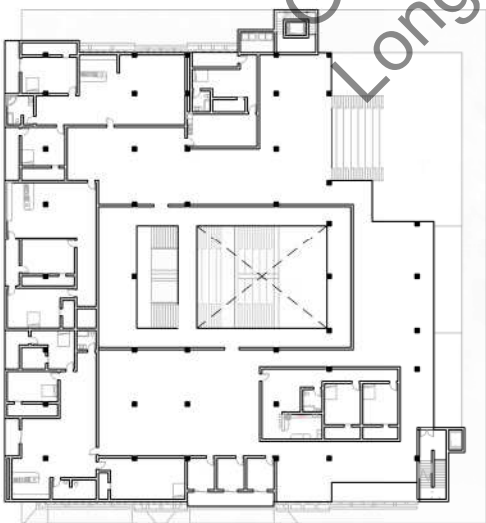
Second Level Floor Plan



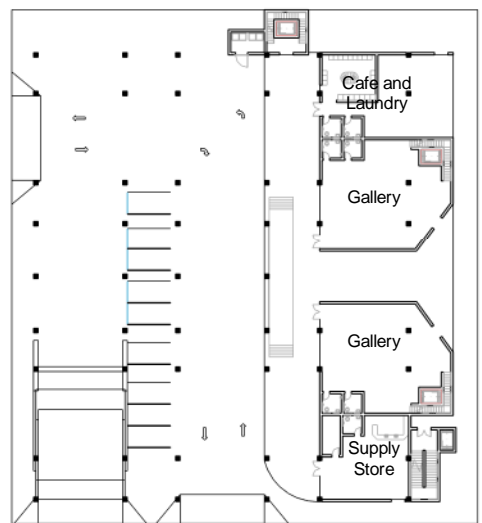
First Level Parking Floor Plan



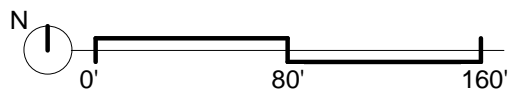
First Level Floor Plan

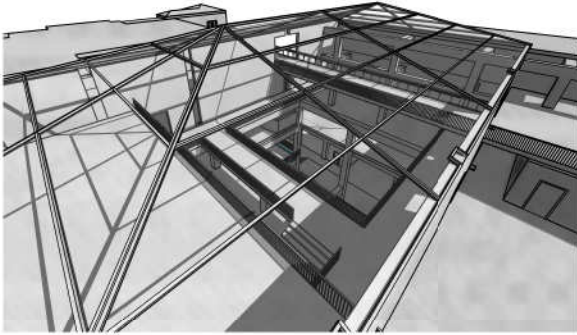


Ground Level Floor Plan



Glendale Community College
Long Ngu Portfolio 2018-2019

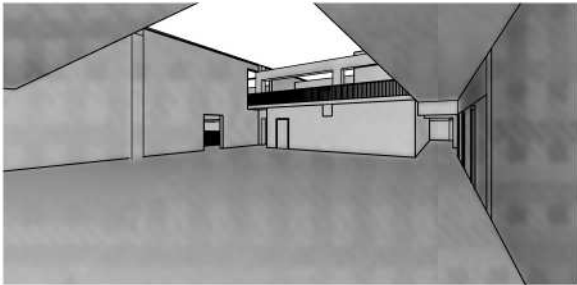




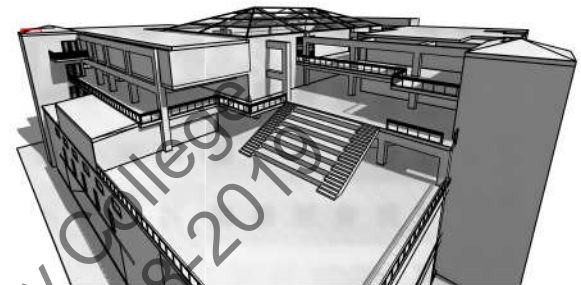
Bird eye view looking down the central staircases toward ground floor.



Walking up the center staircase looking up the atrium.

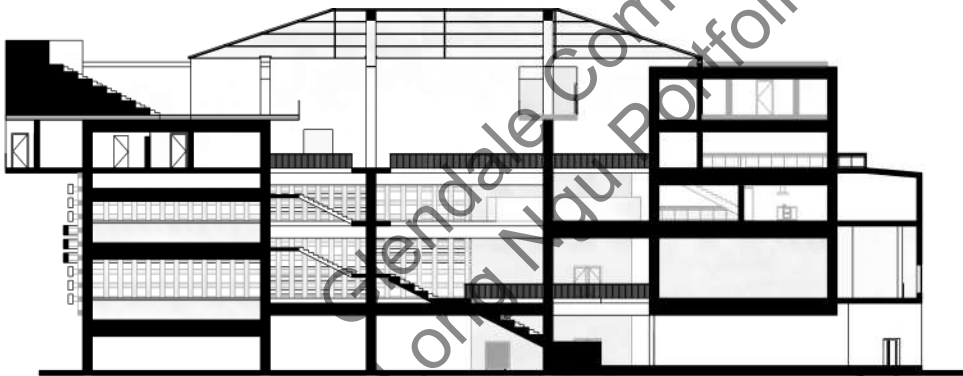


View from open courtyard area.

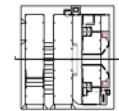


One point perspective view of a gathering area.

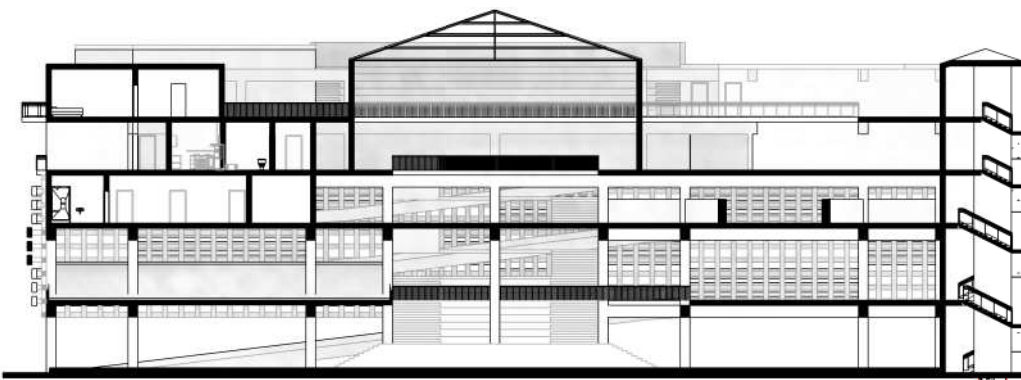
Transverse Section Cut



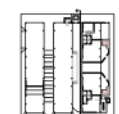
Section cut to shows the central staircase side view.



Longitudinal Section Cut



Section shows the central staircase frontal view with the high volume atrium.



House for Ambigram and Palindrome

Residential Architectural Design I - Arch 120

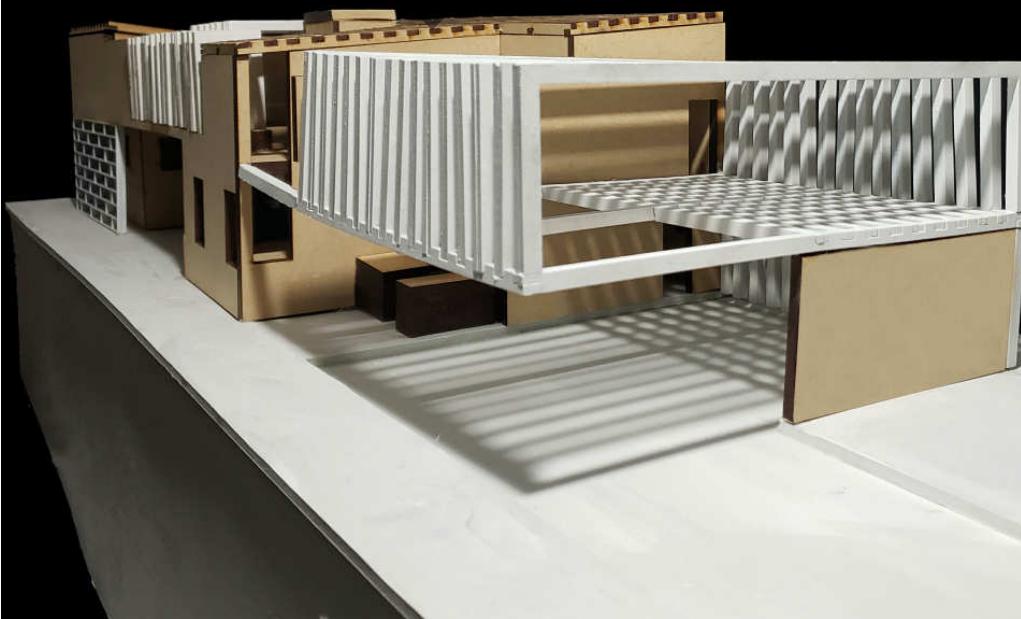
Individual Project

Instructor: Paul Chiu

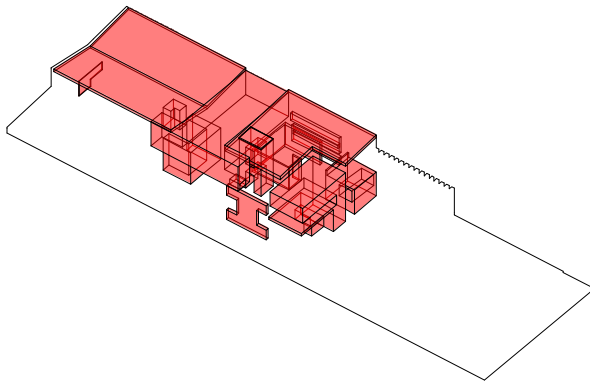
Glendale Community College Fall 2017 (16 weeks)

The house was designed with a concept of symmetrical balancing, rearranging, and removing spaces or solids from letters. The proportional balancing inspired from the word ambigram, where a word was designed with the ability to be viewed in different perspective and yielded the same result. The idea of rearranging and removing spaces or solids inspired by the word palindrome, where a string of words can reorder and generate a possible line of words. The site located at 708 East Palmer Avenue Glendale, CA 91205. Students were required to design the house with three bedrooms with individual bathroom and closet space, three cars garage, and at least 30% landscape.

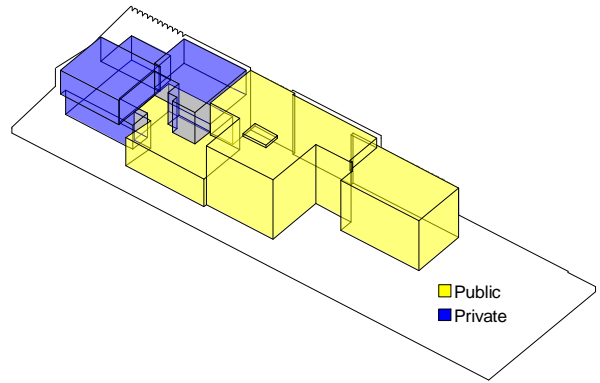
16



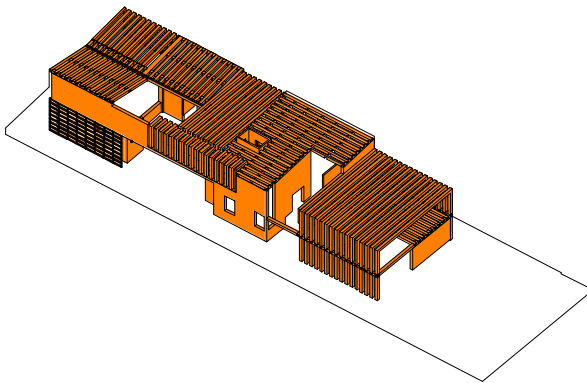
This is a 1/4" scale model made by laser cutting MDF board.



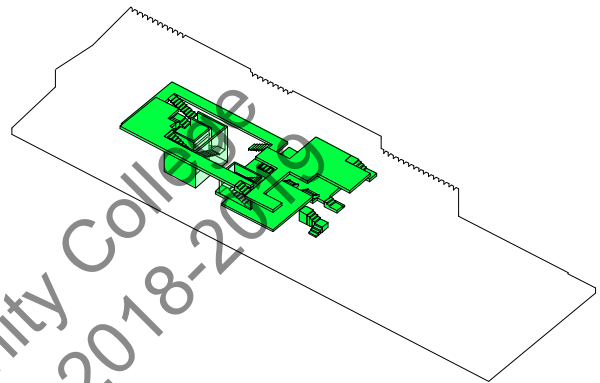
Parti Diagram



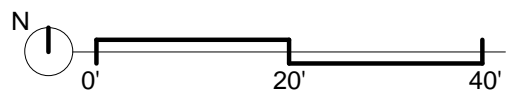
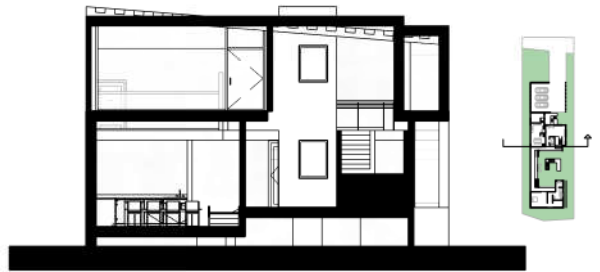
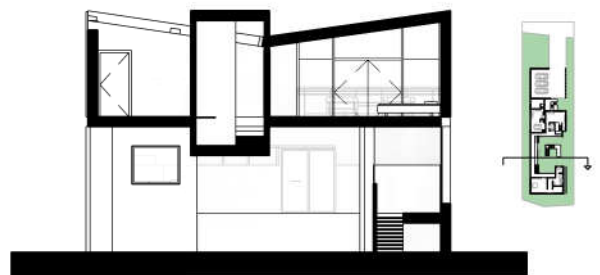
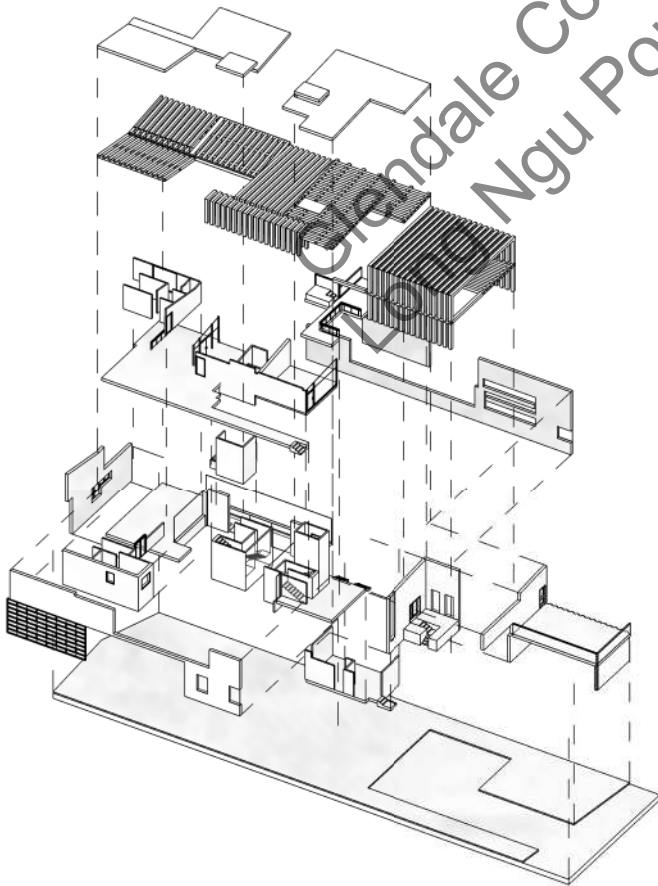
Program Diagram



Structure Diagram



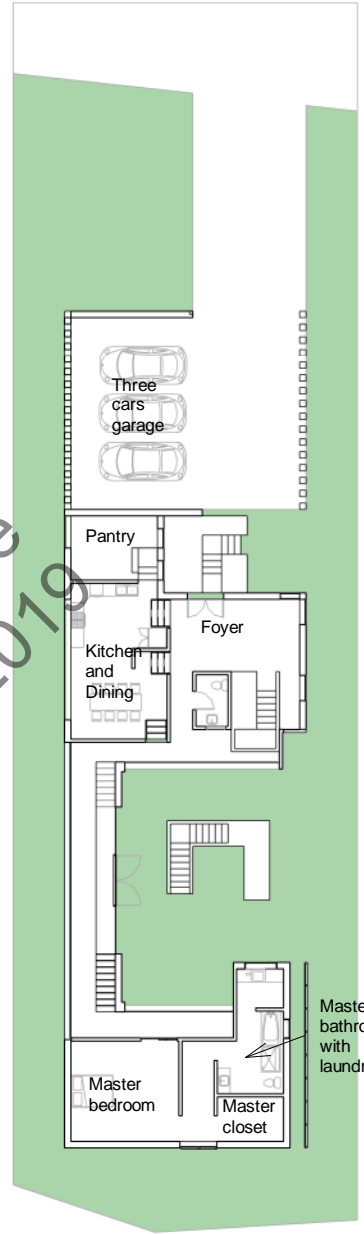
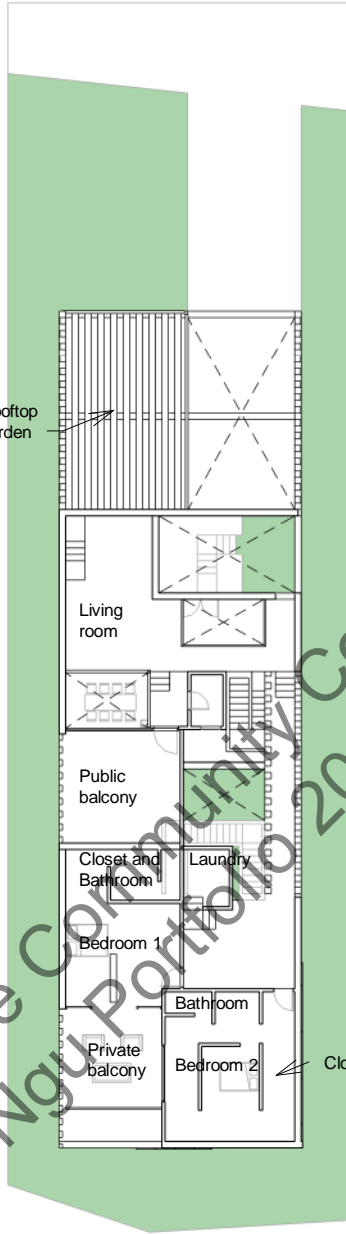
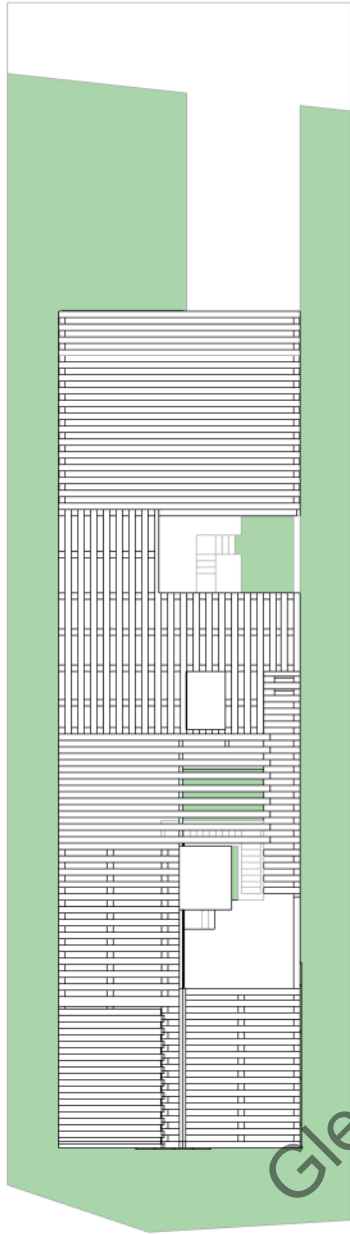
Circulation Diagram



Site Plan

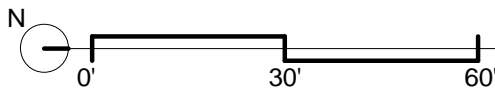
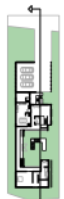
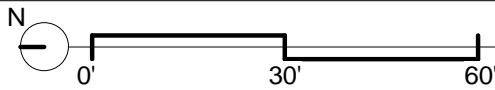
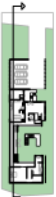
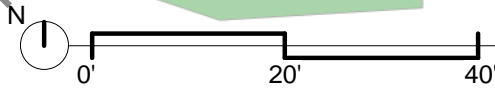
Second Floor Plan

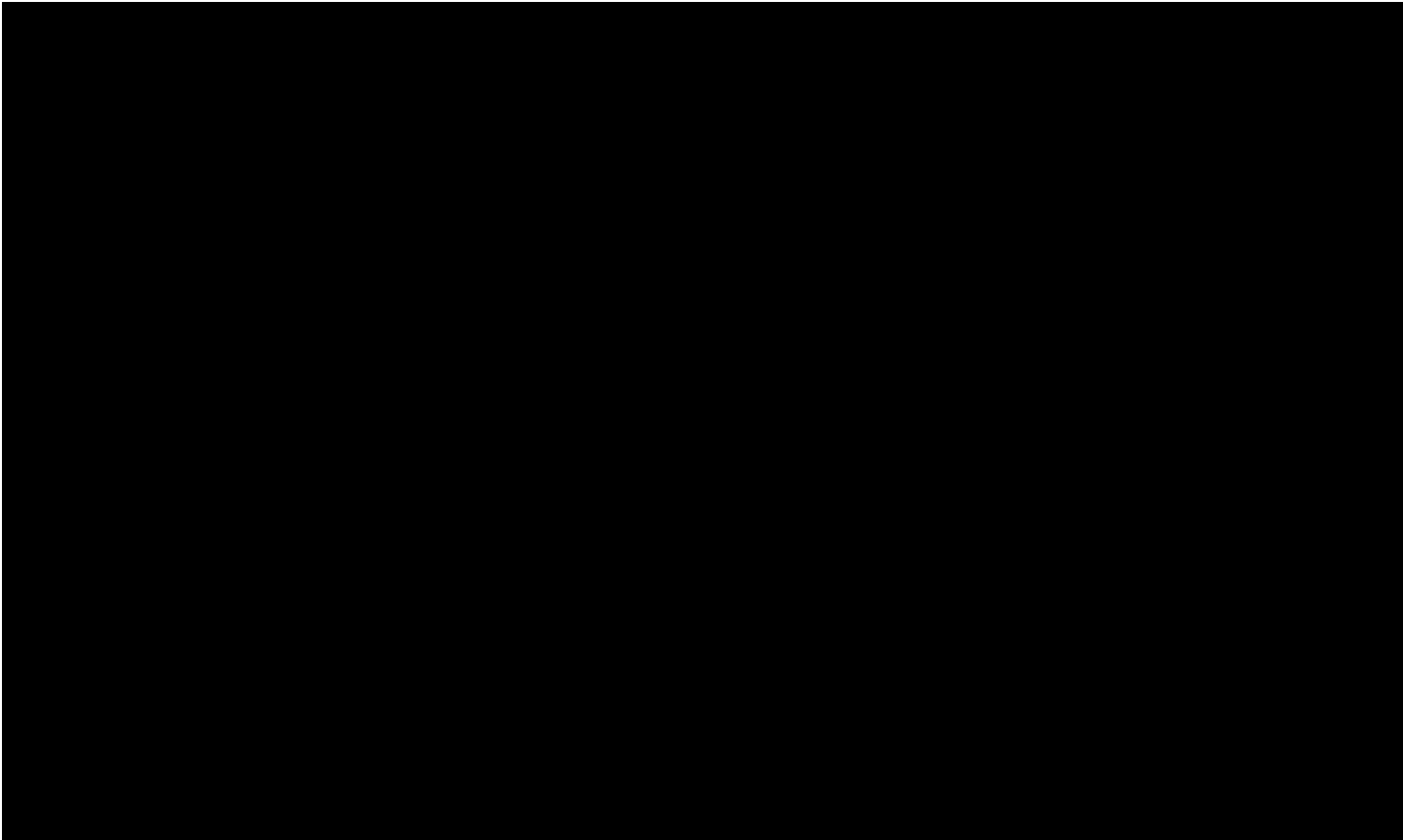
First Floor Plan



18

Glendale Community College
 Long Ngoc Portfolio 2018-2019





East elevation view of the model that casted the shadow of the structure and walls.

Thank you for taking the time to review my portfolio.

Glendale Community College 2017-2019

Long Ngu

20

