



# HOPE IN ACTION

FACULTY INSTITUTE DAY

SEPTEMBER 7, 2018

# “our GCC” Vision



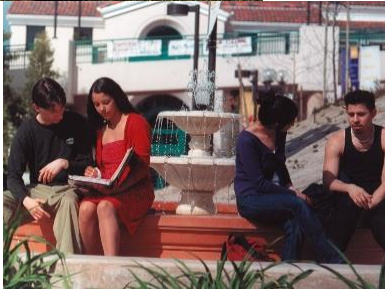
GCC is the Greater Los Angeles Region’s premier learning community where all students achieve their informed educational goals through outstanding instruction and student support services, a comprehensive community college curriculum, and unique opportunities found in few community colleges.



# Hope in Action

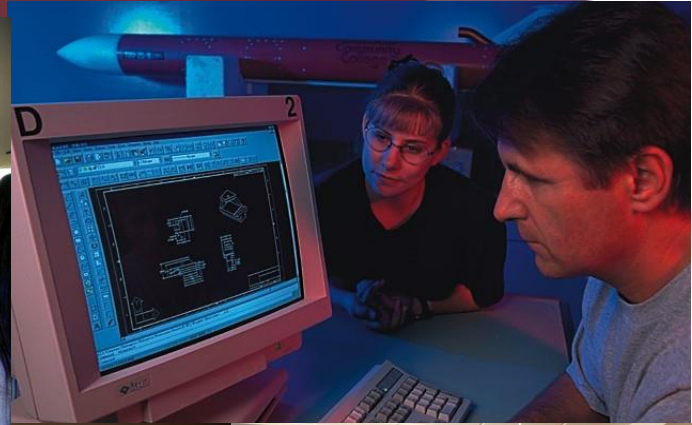


**Why are you working at GCC?**

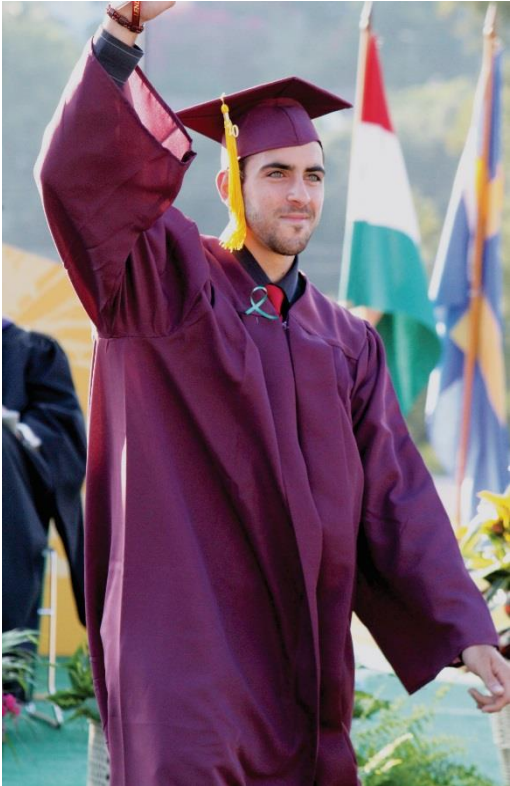


# Hope in Action

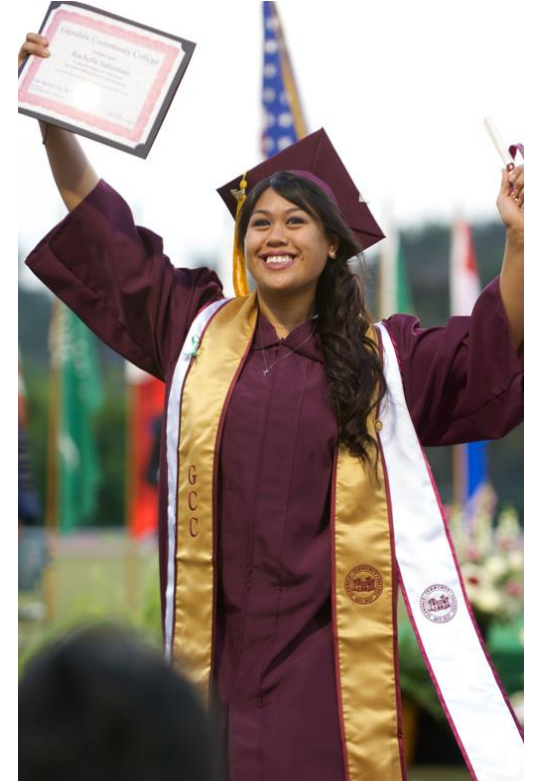
Service in an education environment



# Hope in Action

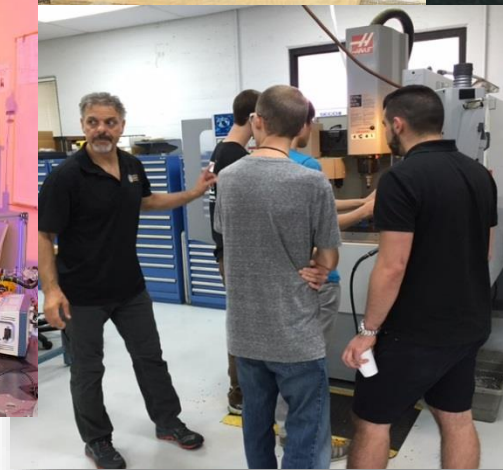


**What do you love  
about working at GCC?**



# Hope in Action

Student interaction and helping students succeed



# Hope in Action



- ▶ **You are an essential part of our learning community.**
- ▶ **Without you, we cannot achieve our vision.**
- ▶ **Without you, our students will not be successful.**

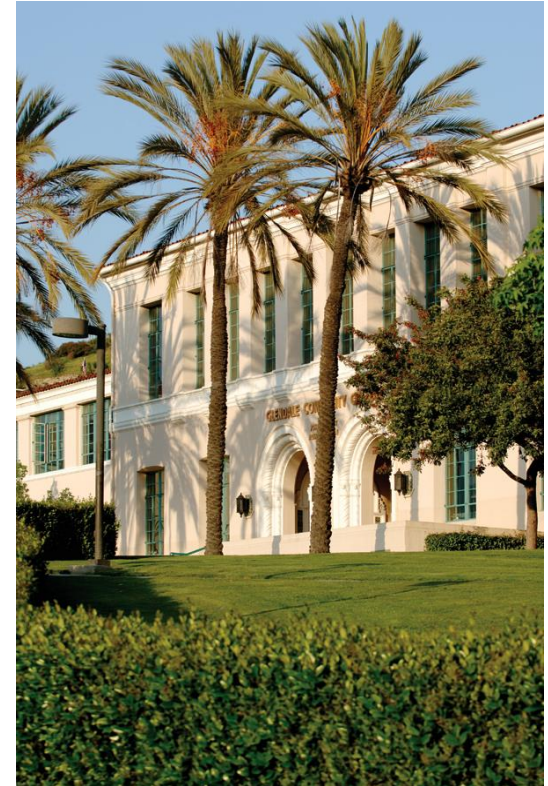


# Hope in Action



Yes you are part of the team  
But key to team success is:

▶ how are you doing?



# Hope in Action



Why do people enroll  
at GCC?



# Hope in Action



## Defining Hope

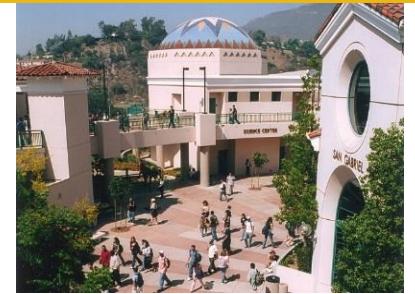
- a feeling of expectation and desire for a certain thing to happen
- someone or something that may be able to provide help

# Hope in Action



Remember our vision?

**GCC is the Greater Los Angeles Region's premier learning community where ...**



**ALL STUDENTS**

**achieve their informed educational goals**

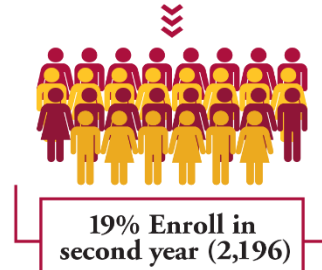
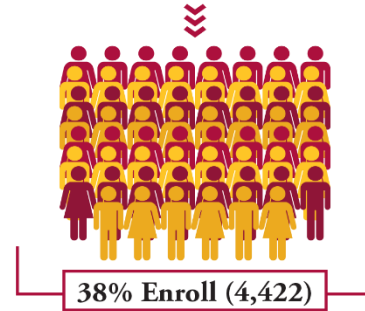
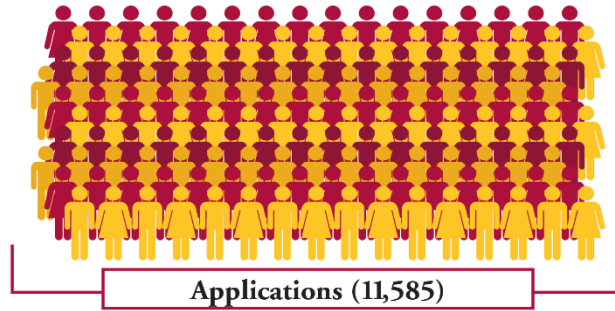


# Hope in Action



- **So how are we doing?**
  - **How are you doing?**
  - **Are we helping all students achieve?**
  - **Are we showing hope in action?**
-

## THE RETENTION CHALLENGE



**MANY GCC STUDENTS  
DO NOT REACH THEIR  
EDUCATIONAL GOALS**



# Hope in Action

## *Student Centered Funding Formula*



**All students, Promise Grant (BOG) premium, Pell Grant premium**

- Associate degrees for transfer granted
  - Other associate degrees granted
  - Credit certificates of 16 units or more granted
  - Completion of transfer-level math and English courses within first enrolled academic year
  - Successful transfer to university
  - Completion of nine or more CTE units
  - Attainment of regional living wage
-

# Hope in Action

## *College Initiatives for Student Success*



- Institutional Master Plan
- Guided Pathways
- Integrated Plan for Student Success (3SP, Student Equity, and Basic Skills)
- Enrollment management
- Distance education
- Zero textbook cost degree
- System Vision for Success

# Hope in Action



# Hope in Action



How are you doing?

- Recognition of students in need
- Awareness of support services
- Professional development

# Hope in Action



GCC aspires to be the Greater Los Angeles Region's premier learning community where all students achieve their informed educational goals through outstanding instruction and student support services, a comprehensive community college curriculum, and unique opportunities found in few community colleges.