

Issue #1

April 2018



DE at GCC!

Become Distance Education Certified!

GCC is proud to offer Faculty a free, 4-week fully online **DE Certification** in partnership with the @One Teach-the-Teacher Training Program – **Next Class: April 23rd!** Only a few spaces left – register right away!

<https://www.glendale.edu/class-schedule/distance-education/de-faculty-center>
(DE Certification will give you a 1.25 in salary advancement and cover your full Flex)

Become DE Certified!



Featured Workshops!

Make it Groovy:
Adding Rhythm to
Your Course

A one-hour workshop in
advanced course design.

Fabiola Torres
FIC, SV 112.

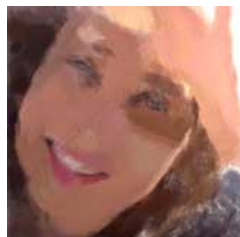
Fri., April 20, 12:45 PM
Thur., April 26, 12:30 PM



To be eligible to teach fully Online or Hybrid courses, instructors must be both DE Certified and DE Instruction Eligible. **Eligibility is maintained through the annual completion** of six hours of **GADER (Glendale Annual Distance Education Recertification)** for full-time faculty and three hours of for adjunct faculty. Eligibility lapses if the GADER requirement is not **completed** by a firm deadline this year of **May 16, 2018.**

<https://www.glendale.edu/class-schedule/distance-education/de-faculty-center>

Contact Me with GADER Questions!



INSTRUCTOR JULIE GAMBERG

defacdev@glendale.edu

(818) 240-1000 x5345

Faculty Innovation Center (SV)

Spring/Fall – M. 11-12pm, Th. 1:45-3:45pm

DE CERTIFICATION LIST + RECERTIFICATION (GADER) +
COURSE DESIGN + PEDAGOGY + WORKSHOPS



DISTANCE EDUCATION COMMUNITY OF PRACTICE

Five integrated workshops to tune up our online teaching.

If you are certified in Distance Education, you will be placed in the GCC DE Community of Practice Canvas Course automatically (feel free to opt out). You may attend any or all workshops. provided you complete the course activities before attending. **Three hours** of DE GADER (Recertification) will be awarded for each module and workshop completed. All workshops are held in the Faculty Innovation Center, SV 105, from 12:20-1:30. Lunch will be served at noon with RSVP: <https://goo.gl/forms/SwiP4rFQfS12AATy1>.

First, WATCH a Video
Next, DISCUSS online
Then, ATTEND a workshop

- Course Navigation**
3/1 We will watch and discuss in the final week of February, and meet March 1.
- Unit-Level Objectives**
3/21 We will watch and discuss in the second week of March, and meet March 21.
- Unit-Level Chunking**
4/5 We will watch and discuss in the first week of April, and meet April 5.
- Page-Level Chunking**
4/25 We will watch and discuss in the third week of April, and meet April 25.
- Effective Use of Canvas Tools**
5/3 We will watch and discuss in the fourth week of April, and meet May 3.
- Informal Course Peer Review**
5/16 We will watch and discuss in the second week of May, and meet May 16.

DE COMMUNITY OF PRACTICE

GLENDALE COLLEGE



MARCH 1
COURSE
NAVIGATION



MARCH 21
PLACEMENT OF
UNIT-LEVEL
OBJECTIVES



APRIL 5
UNIT-LEVEL
CHUNKING



APRIL 25
PAGE-LEVEL
CHUNKING



MAY 3
EFFECTIVE USE OF
CANVAS TOOLS



MAY 16
INFORMAL
COURSE PEER
REVIEW

J.GAMBERG@GLENDALE.EDU #GCCLEARN
[HTTP://ONLINENETWORKOFEDUCATORS.ORG/](http://onlinenetworkofeducators.org/) #CCCLEARN

GLENDALE ANNUAL DE RECERTIFICATION



DE Community of Practice...How does it work?

Every faculty member who is certified to teach DE will be automatically added to the Canvas course that is the GCC DE Community of Practice (CoP). **If you are not in that course, and you would like to be**, email defacdev@glendale.edu.

All Community of Practice Modules have three parts:

- I. Read or Watch something in advance of meeting (in the Canvas course)
- II. Discuss in advance of meeting (in the Canvas course)
- III. Meet (in the Faculty Innovation Center, SV 105; participation by Zoom welcome)

You will be awarded three hours of GADER for each Module. If you cannot come to the meeting, you can still be awarded two hours of GADER; however, you cannot be awarded GADER for attending the meeting without doing the work in advance.

This spring, lunch will be served at each GADER meeting: April 5, 25, May 3, 16. If you would like lunch, **please be sure to participate in the Canvas "Communities of Practice" course in advance of the session** and also RSVP a minimum of 72 hours in advance: <https://goo.gl/forms/SwiP4rFQfS12AATy1>, and indicate whether you would prefer a lunch vegetarian or regular lunch.

I don't want to do the Community of Practice. Do you promise there will be more opportunities?

We 100% promise. They will be sent out to the DE instructors list, and added to this site, as they come up!

You may also take a professional development course at **@One**: <http://onlinenetworkofeducators.org/pd/registration-introduction/>

Needing Canvas Tech Support?

<https://www.glendale.edu/class-schedule/distance-education/de-faculty-center>

DE Coordinator



Alexa Schumacher
de@glendale.edu

818-240-1000, x5298
Faculty Innovation
Center (SV112)
T/Th 9:30-10:30am
W 9:30-12pm

<http://glendale.edu/online>
Policy+Procedure+CoDE