

Thank You Sponsors

Dr. Armina Gharpetian, DDS

Creative Lounge Art Studio, Armineh Havan

Jill Lewis

Lexus of Glendale

My Favorite Florist

Mineh Beauty, Edic Thanasian

Remedy Liquor, Melineh Issakhanian

Southwestern Financial Network, Tina Parsegian

Featured Departments

Alumni Association

Baja California Field Studies

Business Division

Dance Department

El Vaquero

GCC Bookstore

Media Arts

Music Department

Nursing Program

SPARK Peer Mentoring Program

Veterans Resource Center

GCC Alumni Council

Alex Leon

Angela Baghumian

Armina Gharpetian

Arpi Amirian

Barbara Jordan

Jackelyn Nofsinger-Smith

Jane Pojawa

Kevork Kurdooghlian

Lisa H. Brooks

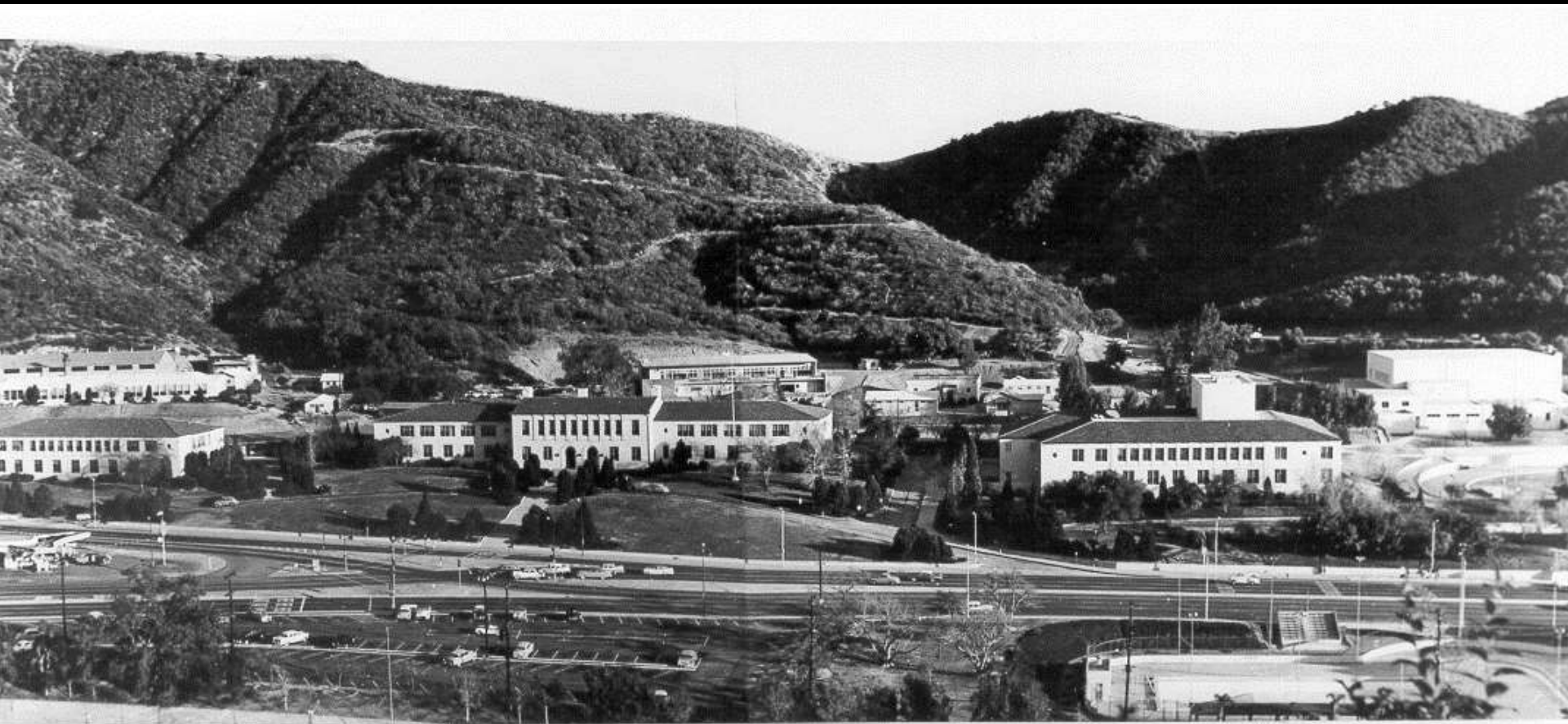
Nalini Lasiewicz

Reny Nazarian

Tina Parsegian

Sevada Avakian

Shant Sahakian



GLENDALÉ COLLEGE, GLENDALÉ, CALIFORNIA



PWA
PUBLIC WORKS ADMINISTRATION
LAWRENCE, MISSOURI







PACIFIC PORTLAND CEMENT CO.
MADE IN U.S.A.

QE
QUINTON ENGINEERS, LTD.
SAN FRANCISCO, CALIFORNIA

BRIDGE
OUT

Among Our Greeks

COSMOPOLITAN

On November 4, Mrs. A. D. Smith and her husband will lecture and show moving pictures on England, the Scandinavian countries, and Switzerland. The lecture will be held at 12:30 in the Chemistry lecture room, as a meeting of the Cosmopolitan club. The couple made a complete tour of Europe this summer, and have a fund of recent information on conditions on the continent.

Y. M. C. A.

Tomorrow the Hallow'en motif will be carried out in the club luncheon of the Y. M. C. A. Clever stunts and decorations are expected. The sixteen men who are pledged to this club are Bill McMillan, James Thomas, Gordon McCheaney, Ted Southworth, Carl Faris, Art Peart, Obo Sakaguchi, Robert Hilton, Ray Belnap, Ray Edwards, Karl Schevendener, Jim Wood, Rex May, Lee Kliever, Bill Fry, and Larry McLarty.

SIGMA XI SIGMA

Sigma Xi Sigma, advanced science club, this week is receiving new pledges, the invitations having been sent out last week. The reason organization has been so long delayed is that June graduation left so few members. However, in a couple of weeks the club expects to be in stride.

The officers remaining are Willis Routson, president, and Greta Hebbert, secretary. The purpose of the society is to stimulate interest in scientific advancement.

EPSILON OMEGA

Informal initiation of Epsilon Omega was held last week-end at Helen Pendell's cottage at Manhattan Beach. Pledges of the club were Helen Bryan, Kate Allison, Nadine Howeth, Marian Welz, Jean Grinnell, and Wilma McAllister. Members are Jeanne Butler. Le-

WOMEN SPORT NEW OUTFITS



Sue Maupin, Kate Allison, and Jane Calvert were recently chosen as song leaders by the A. W. S. to cooperate with the yell leaders in the organization of new school songs and yells. Along with the complete change in school colors, new outfits have been purchased for the song leaders, who will play an important part in the Ventura-Glendale game this Friday. The new uniforms will consist of maroon skirts, jackets, and socks with gold satin blouses.

...tains an outside business speaker, November 7th is the date set

PATRONS HONOR

New D
For Bo
Board Pla
In Cooper
Management

October 28, 1936

Sink
Pirates
Friday
Nite



VAQUEROS TAG

Last Wednesday board held a meeting and completed the plan for the next week. Many student changes in the cooperative board and the union these:

1. Should the board sell local merchants?
2. Should the store be operated more on a profit or a non-profit basis, the amount that the bookstore would be decreased to the student body to be increased by dollars per card.
3. Should the store prices for the books be lowered?

PIRATES DISPLAY PRE-SEASON POWER

The executive board several expenditures associated students will prove. Twenty-five

Joe Buckmaster will bring his Ventura Pirates south this week-end to vie with Glendale on the home field. This game may decide the winner of the Western Division Jaycee Conference, even though it is the Vaqueros second league tilt. Ventura has a very healthy looking pre-season record. They downed Santa Maria 23 to 0. The following week the Buckmen defeated Santa Barbara State College 13 to 0. In this game the Pirate backfield demonstrated that it has plenty of speed as well as drive. The Pirates were taken for a fall in the next encounter which was with Black Foxe. The score was 19 to 0, and the Cadets outplayed the Ventura boys in every phase of the game. However, the Pirates came back to beat a strong Taft Jaycee team by 6 points; 19 to 7. Because of this strong pre-league record the Pirates entered the Long Beach game favorites. They won from Long Beach 7 to 2. This last week-end the Pirates bowled over Santa Maria 34 to 19. This would seem to give them

& The





m is coached by first year
ctor Diane Spangler, who
defeated season.

College student 13th victim

Strangler strikes home

Tim Doyle
Asst. News Editor

Cindy Lee Hudspeth, a warmly remembered Glendale College student, died Thursday evening, February 16, the 13th victim of the so-called Hillside Strangler.

The attractive 20-year-old was last seen alive by her landlady 4:30 Thursday afternoon when she stopped in to pay her rent.

Her nude body was found stuffed in the trunk of her car Friday morning below an embankment along Angeles

Crest Highway. She had apparently been strangled to death.

A college student through last semester, she was employed for several months in the Extended Day office. After leaving school, she found similar work at Glendale High.

Simultaneous with these jobs, Miss Hudspeth worked as a waitress and later at a Savings and Loan.

Her studies mostly centered on Psychology and Theatre Arts while her personal life was dominated by a passion for disco-dancing.

Bob Young, whom she met at school, new her as well as anyone else. "We had a very intimate relationship, and then it went into a very close, close friendship with occasional dating.

"... She was to me one of the most beautiful people that I have ever known... They have tried to tie her in with the 'Hollywood scene' and the cocktail waitress type of thing, and I resent it."

Regarding her interests and personal goals he comments:

(Continued on Page 3)



El Vaquero

Who
bas
gan

Glendale
wheelchair
row night
prior to
league me

Actually
The first
Glendale
against th
league pa

Players
include D
John Dav
Dave Ma
Grimsby,
dicapped
lege. Gri
competiti
probably
member



**BEN WERGERER
MAYOR-AT-LARGE**

... Seminar will be
... to a large number of
... os since the big band
... the foxtrot," "swing"
... cha" not only appeal
... ture adults, but also
... er students who can
... te the steps into the
... lar disco-dancing.
... alization of plans for
... ar will depend on stu-
... husiasm and if a
... n be located to have
... th Dean Smith and
... re trying to locate a
... building off-campus
... o college rooms are
... due to night classes.
... asks that anyone
... of a building they
... or a minimal charge
... contact him by leav-
... sage in AD 108.

... he asserted, because it would
... require a two-thirds vote of the
... people to raise taxes upon its
... passage: "You can't get two-
... thirds of the voting population
... out for a presidential elec-
... tion!"

The attorney further

... spending and printing errors in
... the text of the amendment as
... exemplifying deeper flaws. "It
... sounds like something written
... on the back of a menu after too
... many drinks!"

Questioned from the
... audience on the necessity of
... government spending, An-

... ing. An irrate man, identifying
... himself only as a "senior
... citizen," rose and criticized
... Associated Men Students
... President Derrick Paine, who
... was acting as moderator, for
... selectively acknowledging only
... students among the mixed as-
... sembly.

Runaway steamroller crushes wall



OOOPPS!!!

College students gather around runaway steamroller, which bulldozed into a retaining wall in front of the women's gym. The accident was at-

tributed to brake failure. Fortunately, there were no casualties in the mishap.

Photo by Scott Baird

Harrison Hails Hashbury Hippies "Hippie Hy

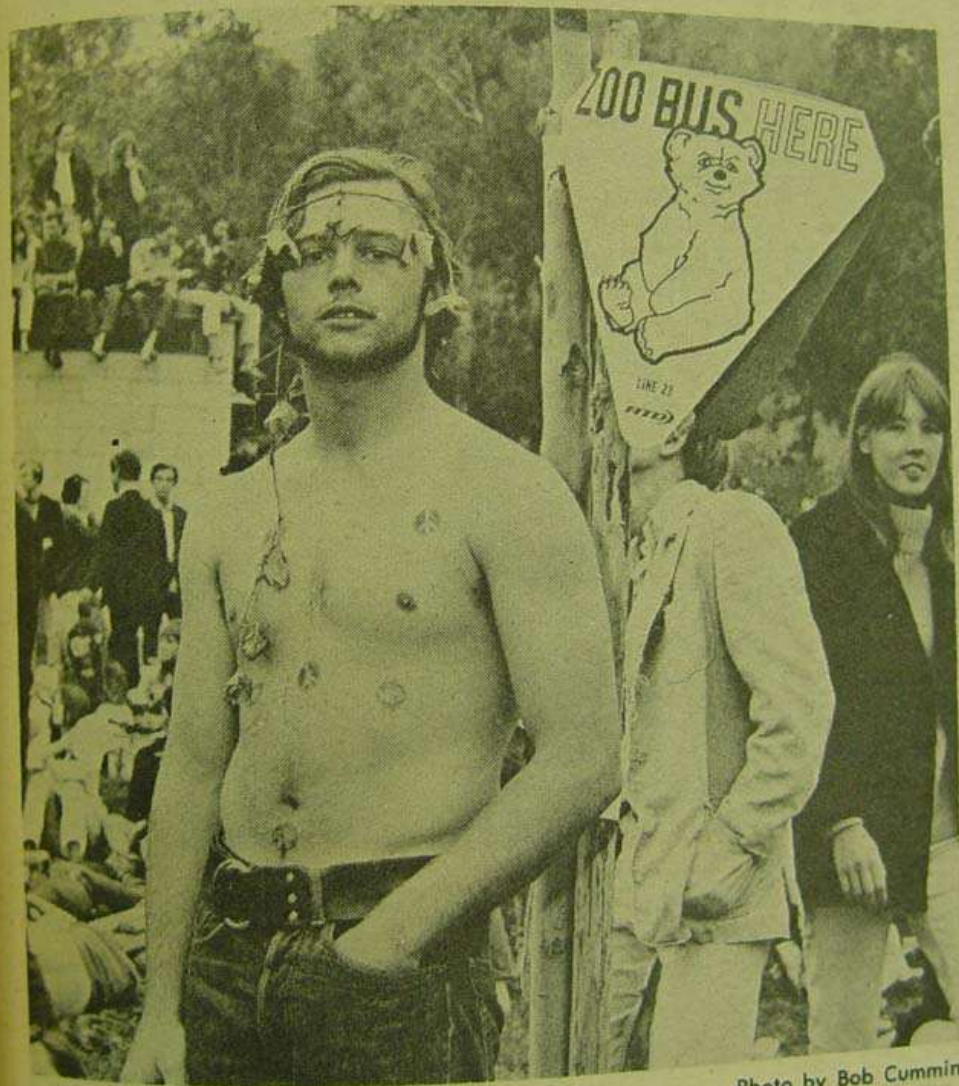


Photo by Bob Cumming

REALLY A HIPPIY?

If you're going to a Griffith Park "love-in" be sure to wear a flower in your hair. This young man demonstrates how to wear a flower in your hair.

Many people wonder why flowers are so closely related with "hippies." This question was clarified when he said, "Flowers are associated with everything beautiful. They are a symbol of those people believing in 'free love.' Flowers are a product of nature, they are pure and clean, and they pick up 'good vibrations'."

The big question concerning "hippies" is that of their association with drugs. "Marijuana leads to bigger things, but it is not needed in order to love life. It is by coincidence that long hair and drugs have fallen into the same movement: the hippy movement." He continued. "A great deal of social pressure is involved with drugs. Taking drugs is like drinking at parties. Every individual has their own 'bag' concerning drugs and what they do to them. Drugs are just one of the things that have fallen into our generation."

Communist Plot

An interesting side line which he brought to light was the idea of a Communist plot associated with the "hippy movement."

"It could be, every person in the country should be aware that there could be a Communist plot behind the 'hippy movement'. If everyone becomes aware of the this idea, it doesn't matter then everyone



SWIMMING

Handicapped by the lack of a plunge and sufficient time for practice, the swimmers did not cut such a wide path in their first year of the aquatic sport. The boys practiced very hard in the "Y" pool, but as it is not of suitable size for practicing regular swimming events, they did not develop form for championship competition.

Going to Redlands University, the Glendale swimmers entered an unofficial Junior College meet May 12, where Riverside J. C. took first honors, with Glendale going



HOCKEY

After months of hard work the Glendale Junior College women were prepared to entertain all the Junior Colleges of Southern California at a play day on March 17. The sports scheduled were hockey and tennis, hockey being the major sport of the day. The Glendale hockey team made a fine showing, although their previous practices had been few.

..... C. H.
..... Pitzer





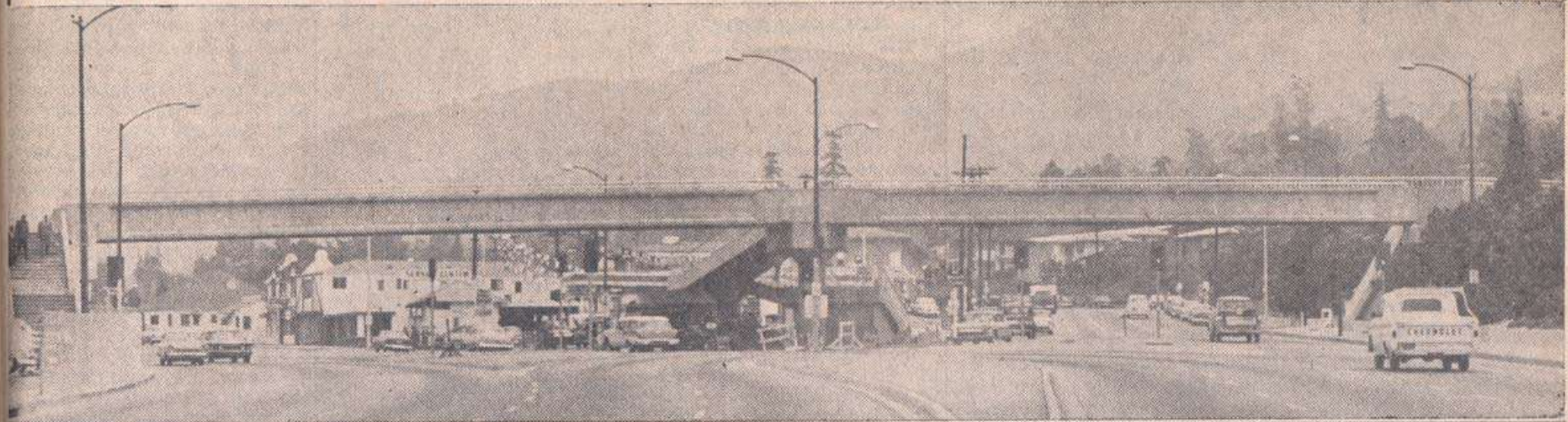


MEN'S GLEE

Glendale Junior College is indeed proud of its Men's Glee Club, for it is a very superior and talented group. The organization was selected among the top six musical groups west of the Mississippi. This distinction was given them after entrance in the Fred Waring contest, in which they reached the semi-finals. They were the only two year institution in the competition and therefore we feel that they have brought nation-wide honor and recognition to Glendale Junior College. During the contest the choral group had the honor of working with Roy Greenwald, who had been sent from the East to make the recordings of our group at N. B. C.

Oliver Hilton as president and Mr. Hirt as musical director have done much to make the Men's Glee Club a complete success.

At Last! Overpass Opens



READY FOR USE—The pedestrian overpass at Verdugo Rd. and La Canada Blvd., in front of Glendale College, has been officially dedicated and opened for student use. The \$102,000 project, begun on Jan. 3 by Byerts & Son Construction Co. of Los Angeles, was completed in 123 days. The overpass was designed to eliminate pedestrian accidents and traffic delays of 60,000 vehicles while 2400 students were crossing the street daily. Traffic flow is

now continuous north on Verdugo Rd. and south on La Canada Blvd. Traffic lights remain to interrupt traffic going south on Verdugo Rd. and traffic turning left to enter La Canada Blvd. going north. The longest span crossing La Canada Blvd. is 114 feet in length and walkways and ramps are over eight feet in width. Ramps are placed at both ends of the overpass for cyclists.

(Photo by Thomas)

'Concert in Spring' Ends Choral Year

As their final performance of the year, the Glendale College choral groups will present a "Concert in Spring" tonight at 8 p.m. in the Auditorium.

Under the direction of Milton Young, GC music instructor, the program will include selections by the Madrigal Singers, the College Quartet and Choir, "The Foremost" and the combined ensembles with the chorale.

Soloists and quartets will join with the combined musical groups in singing a medley of numbers from popular Broadway shows.

Extensive Travels

The choir recently returned from an extensive concert tour in Central California.

Nurses to Get Caps in GC Ceremonies

Completion and Capping Ceremonies for vocational

EL VAQUERO GLENDALE COLLEGE

Harvard Plant













Education
Can't Afford
To Suffer

WILL WORK
FOR UNITS

RAISE
TUITION,
RAISE
TUITION!

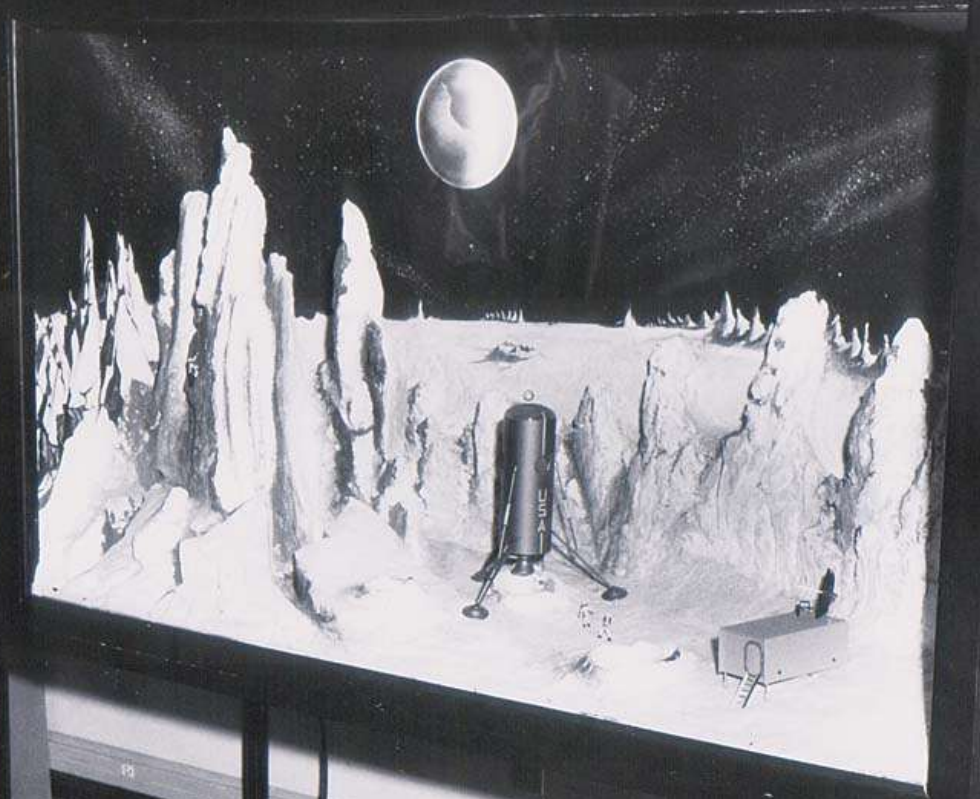
NO EDUCATION
SUPPORT
DEMAND

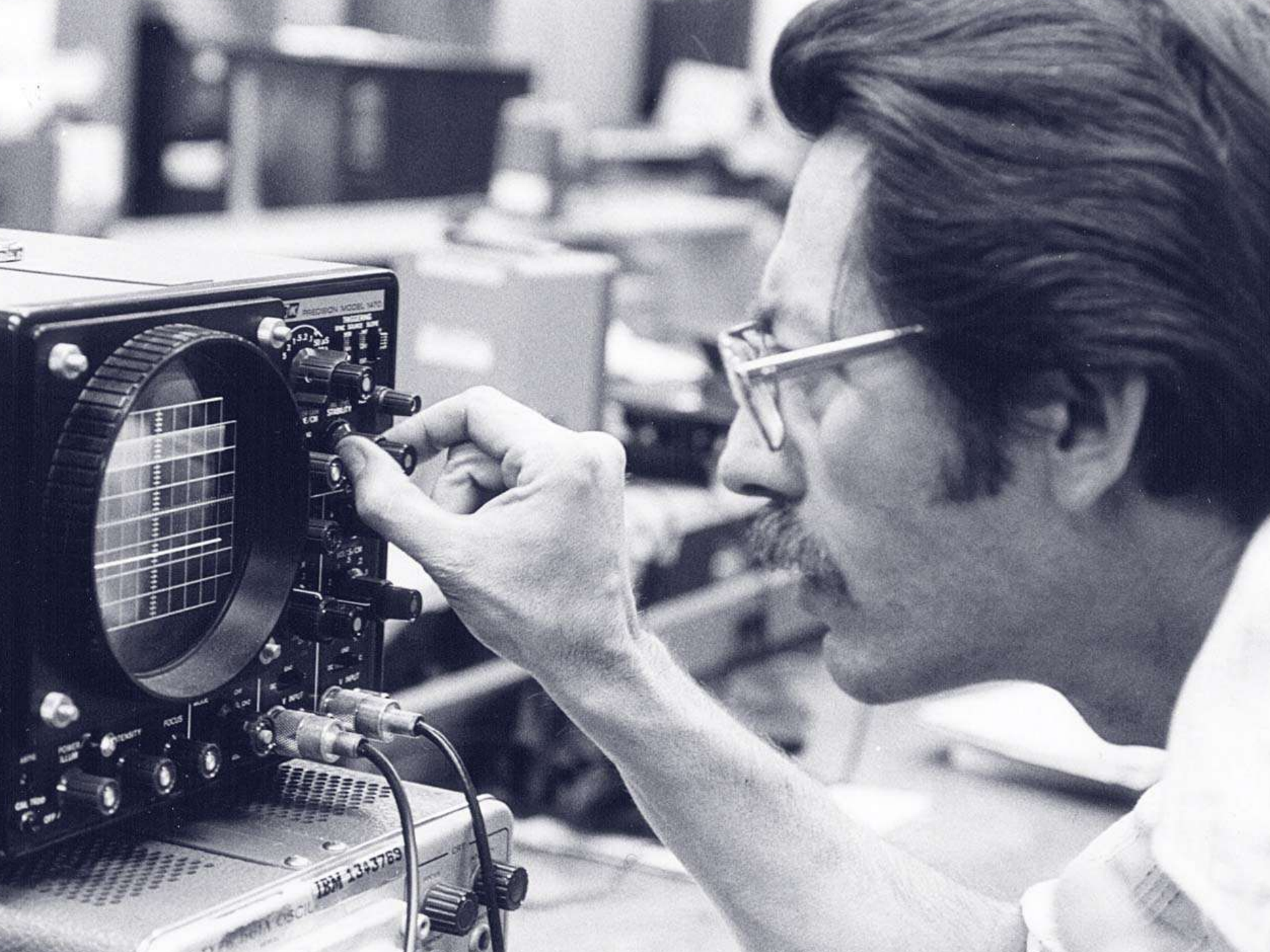
NO EDUCATION
SUPPORT
DEMAND

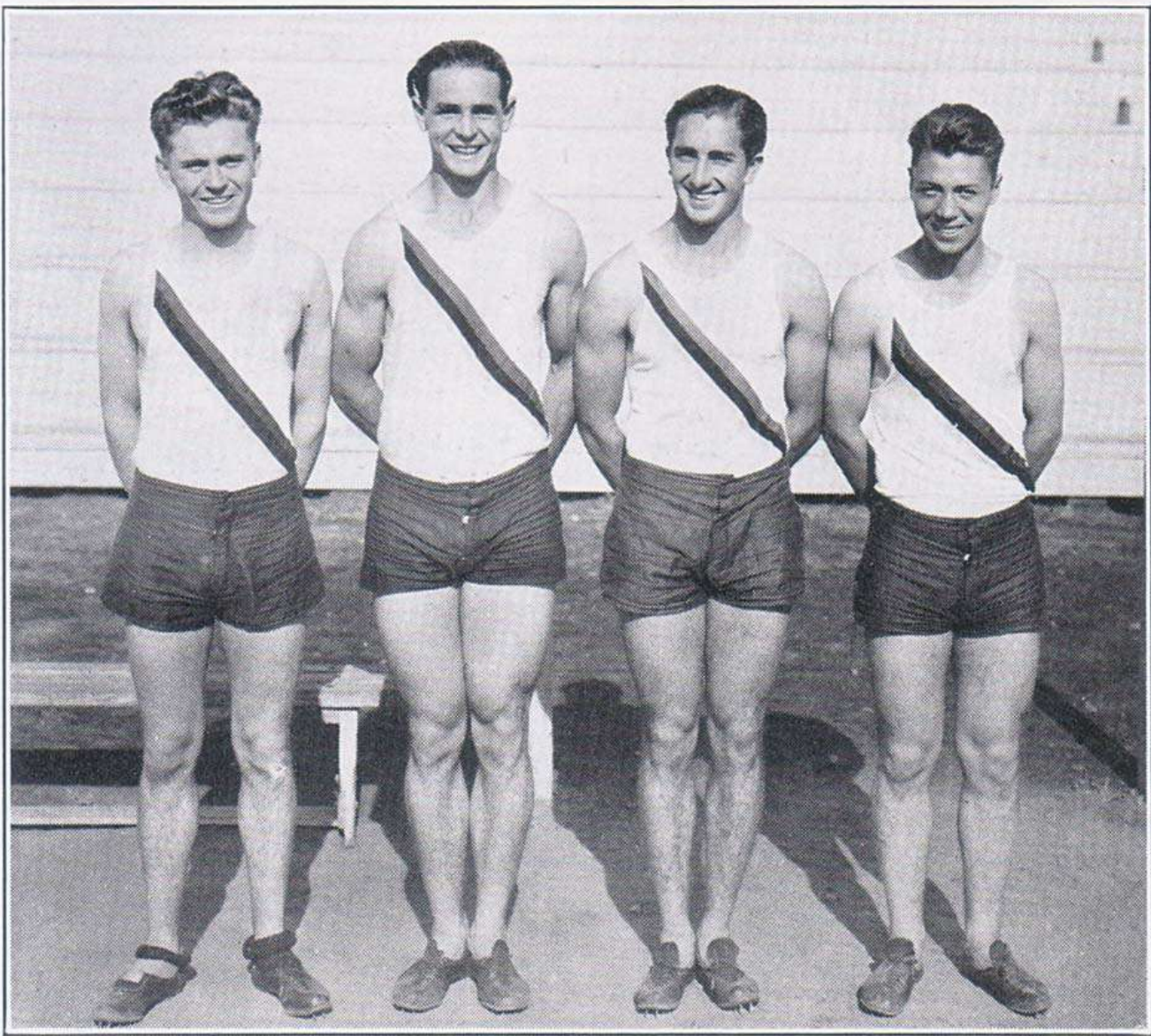


GLENDALE COLLEGE

TECHNICAL ILLUSTRATION PROJECT

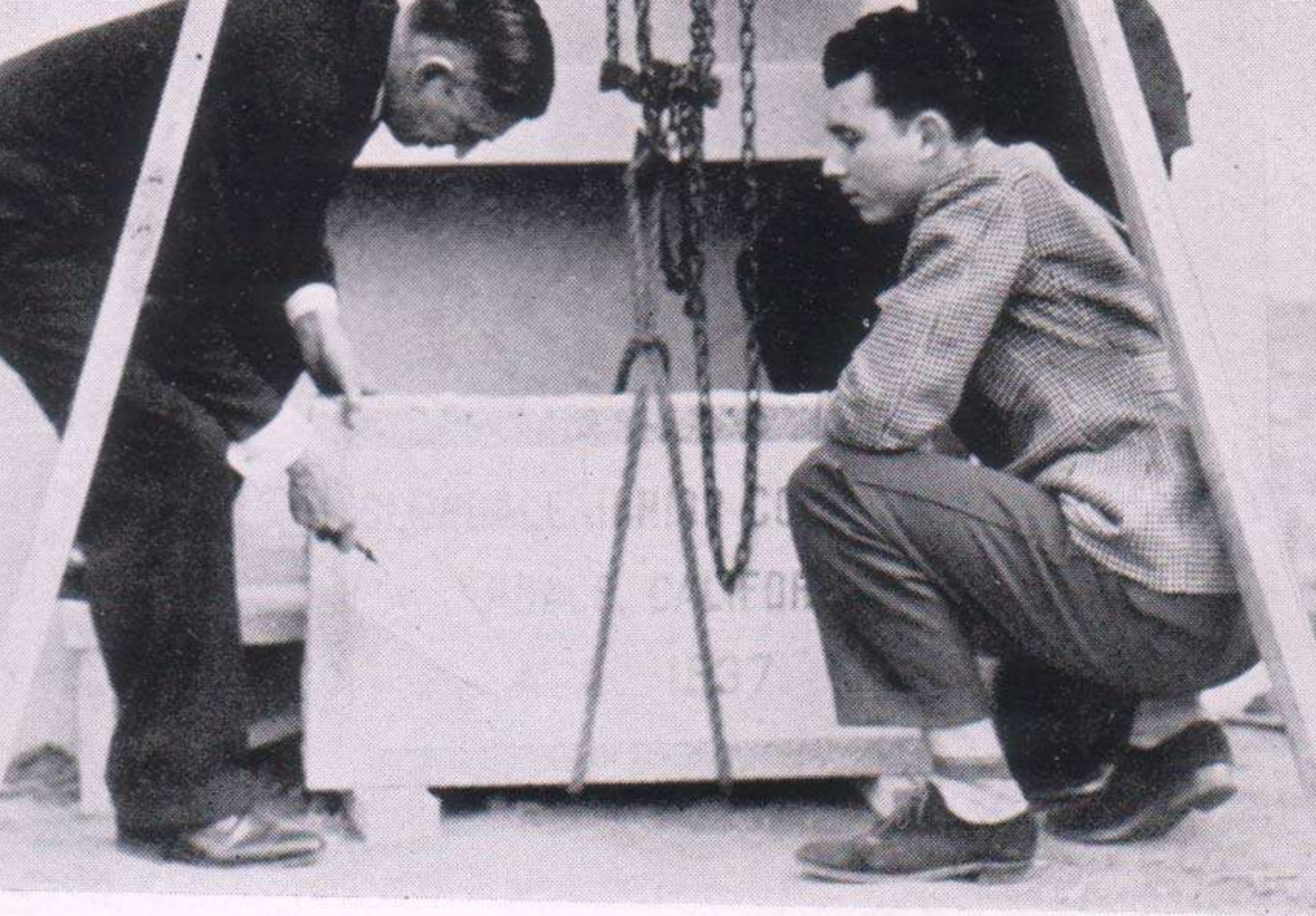






WYKOFF, F. BEATY, GILMAN, SLOCUM

Winners at Fresno, Half-mile Relay—1:30



JUDGE W. TURNERY FOX, TED







QUEEN'S COURT—Jane Greatex, Phyllis Ferry, Nannette Hardy, Billie Brown, Virginia Worthy, Queen Beadel, Shirley Schlichtman, Lilliane Jenkins.











CAMBUS CENTER



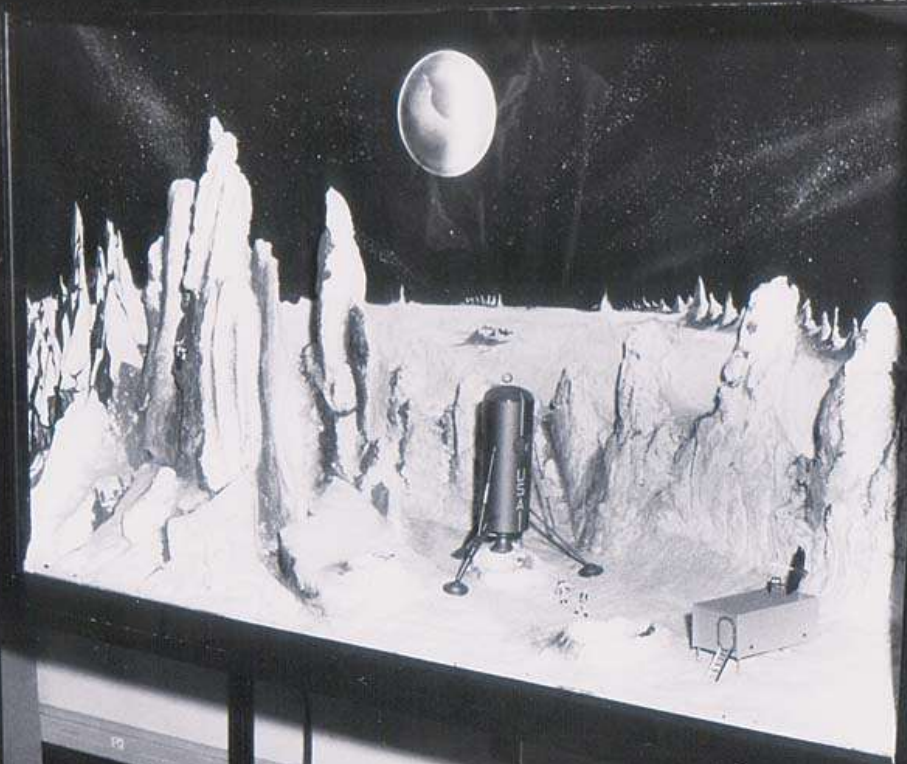






GLENDALE COLLEGE

TECHNICAL ILLUSTRATION PROJECT



**GLENDALE
COLLEGE**

THANKS TILE DONOR

SUSAN HILTON

PHIL & WENDY KAZANJIAN

INVESTMENT PROP SERV

IF 240 1000 440

**GLENDALE
COLLEGE**

**THANKS TILE DONORS
FRANK HOWARD FAMILY
CHUCK WHITESELL FAMIL
THE BLANKENSHIPS
INF 240 1000 440**

COLLEGE
OBSERVES
NATIONS DAY
1982. SPONSORED BY: ISA.

IMPROVING THE QUALITY
OF LIFE
WITH



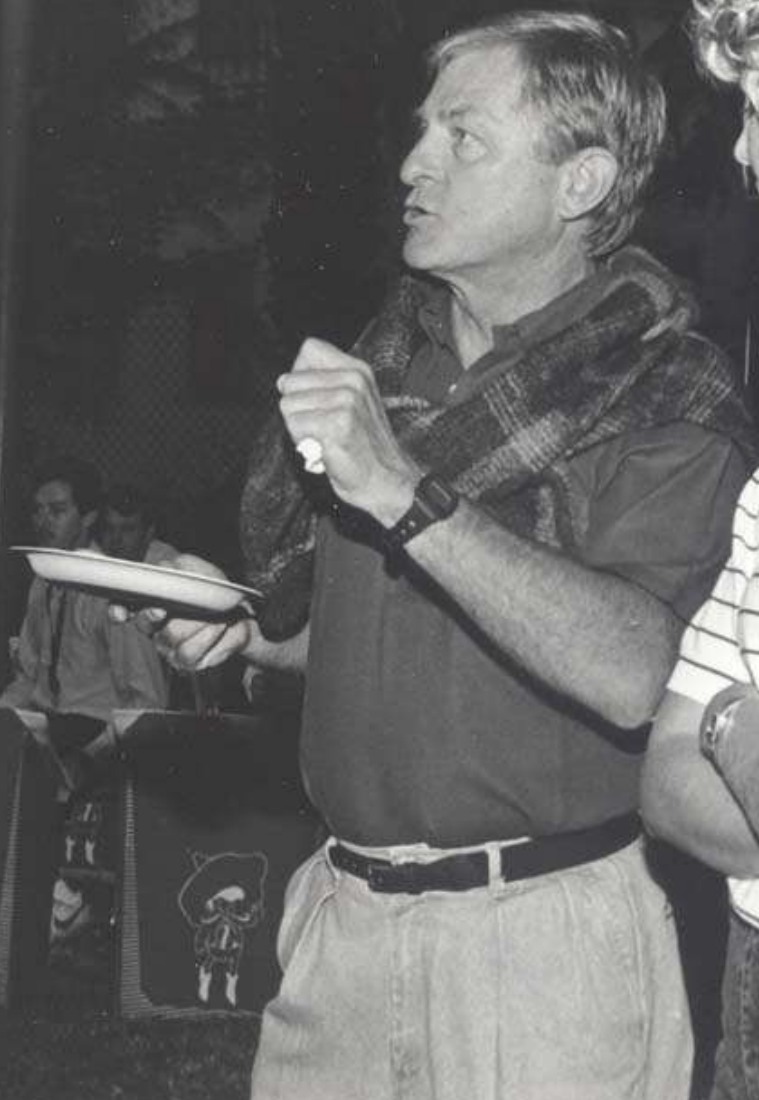








**WELCOME, GLENDALE COLLEGE
ALUMNI & FRIENDS**





GELCO SPACE
Portable Office 818-334-1261

GELCO SPACE
Portable Office 818-334-1261

**CHILD DEVELOPMENT CENTER
GLENDALE COMMUNITY COLLEGE**

SPENCER & AROYAN Associates
Architecture & Planning
PEARSON & JOHNSON

General Contractor (213) 484-0344

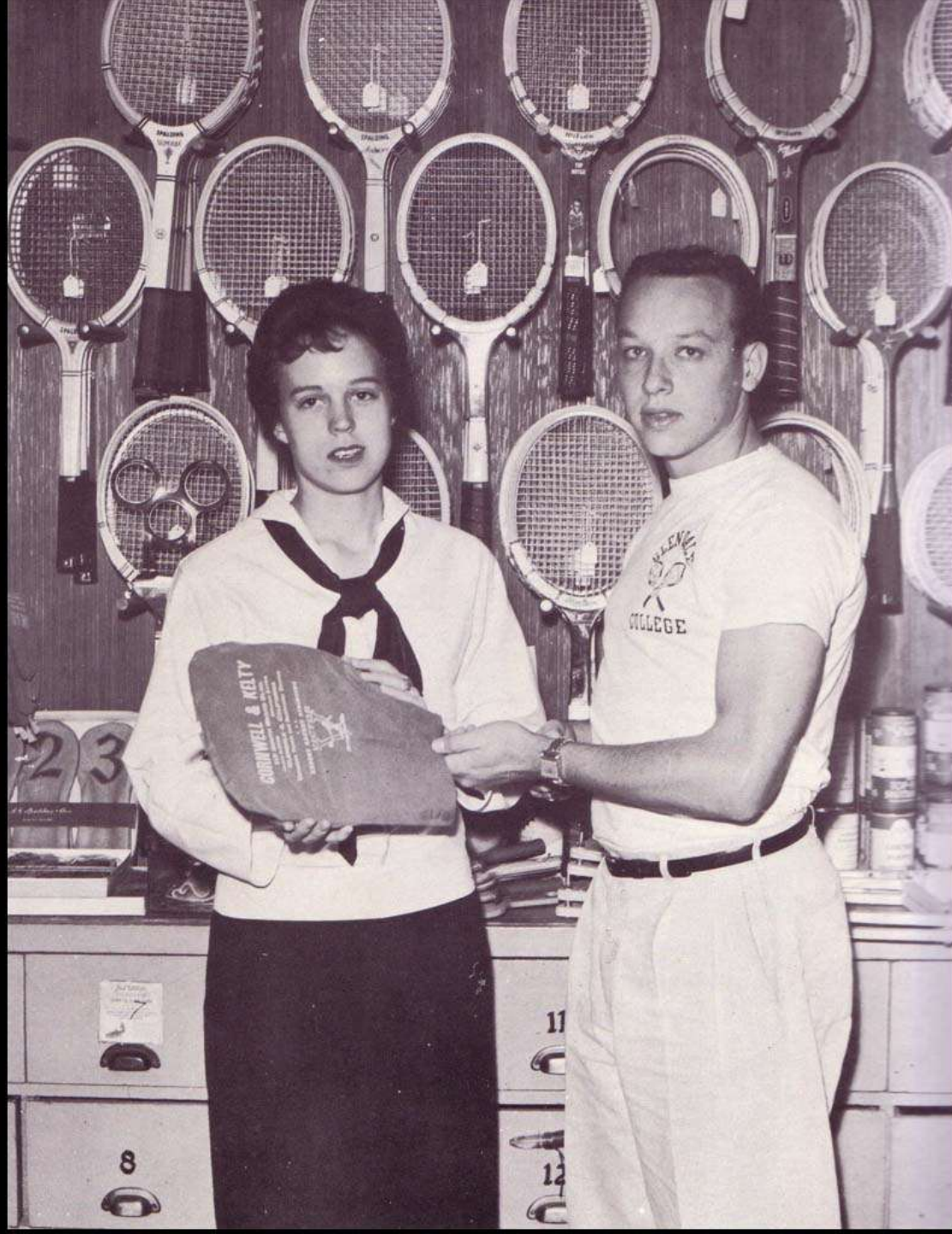




CALIFORNIA
SCHOOL EMPLOYES
ASSOCIATION



GLENDALE
CHAPTER
3



At Last! Overpass Opens



READY FOR USE—The pedestrian overpass at Verdugo Rd. and La Canada Blvd., part of Glendale College, has been officially dedicated and opened for student use. The \$102,000 project, begun on Jan. 1, was completed in 123 days. The overpass was designed to eliminate pedestrian accidents and traffic delays of 10 minutes while 2400 students were crossing the street daily. Traffic flow is

now continuous north on Verdugo Rd. and south on La Canada Blvd. Traffic lights remain to interrupt traffic going south on Verdugo Rd. and traffic turning left to enter La Canada Blvd. going north. The longest span crossing La Canada Blvd. is 114 feet in length and walkways and ramps are over eight feet in width. Ramps are placed at both ends of the overpass for cyclists.

(Photo by Thomas)

'Concert in Spring' Ends Choral Year

As their final performance of the year, the Glendale College choral groups will present a "Concert in Spring" tonight at 8 p.m. in the Auditorium.

Under the direction of Milton Young, GC music instructor, the program will include selections by the Madrigal Singers, the College Quartet and Choir, "The Foremost" and the combined ensembles with the chorale.

Soloists and quartets will join with the combined musical groups in singing a medley of numbers from popular Broadway shows.

Extensive Travels

The choir recently returned from an extensive concert tour

Nurses to Get Caps in GC Ceremonies

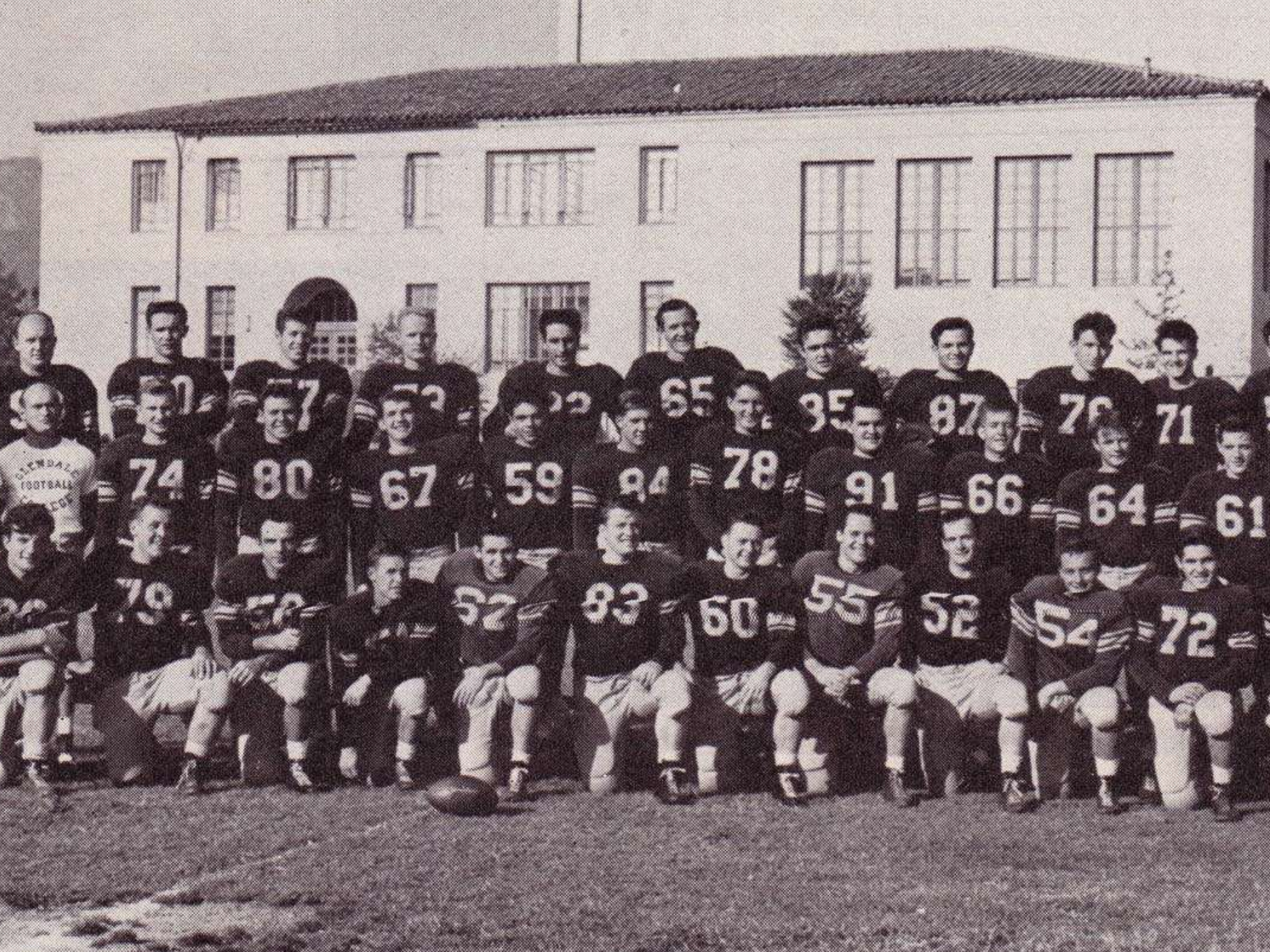
Completion and Capping Ceremonies for vocational

EL VAQUERO

GLENDALE COLLEGE









TYNER PAVING CO.
BOB and KATHY
TYNER

TYE VEDEN
PRESIDENT
GLENDALE COLLEGE
FOUNDATION 1986-1988

VIRGIL GENE
NELSON

JOHN and JOANNE
SARGEANT



TYE YEDEN

PRESIDENT

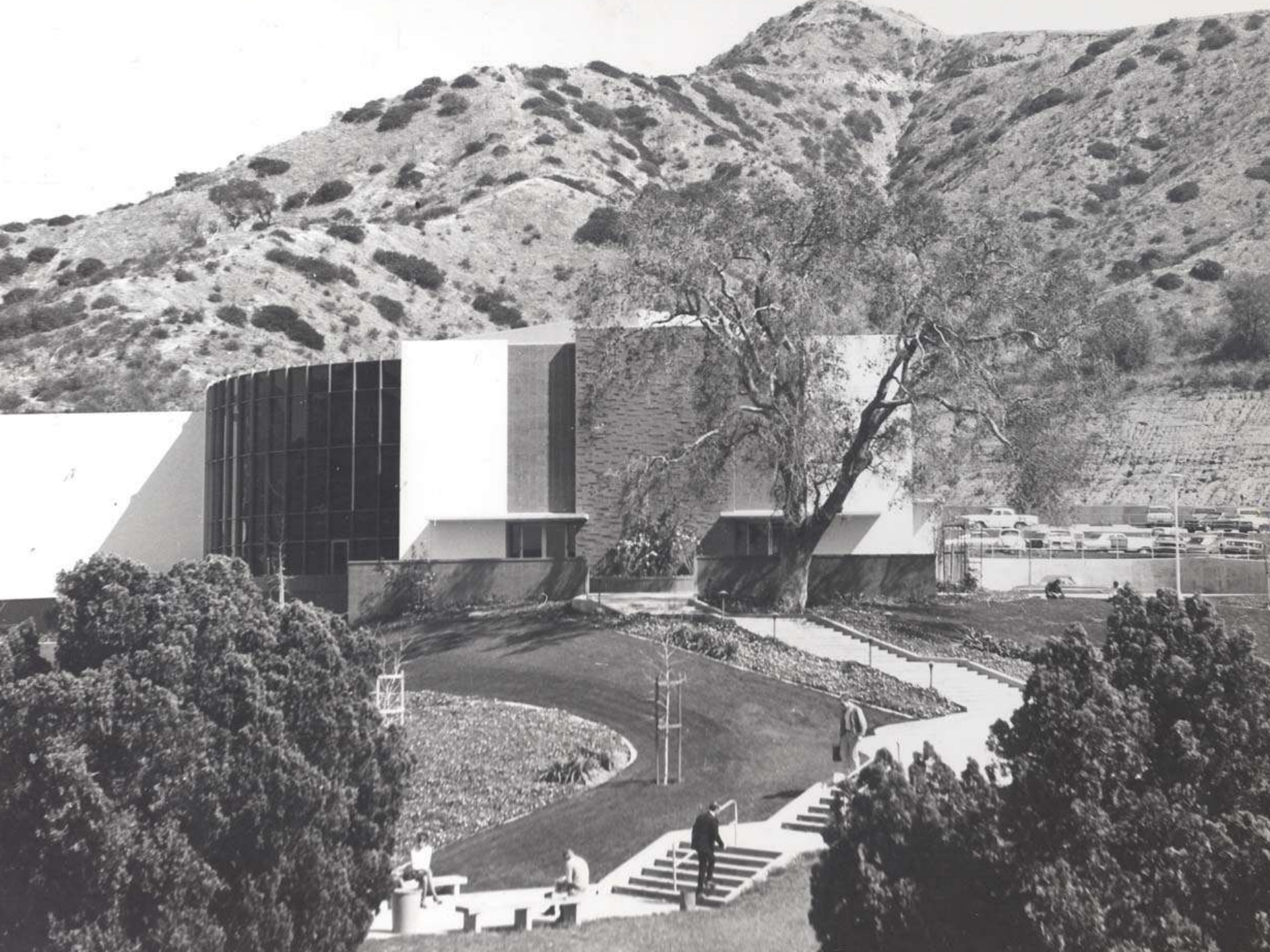
GLENDALE COLLEGE

FOUNDATION 1906-1966

TYNER





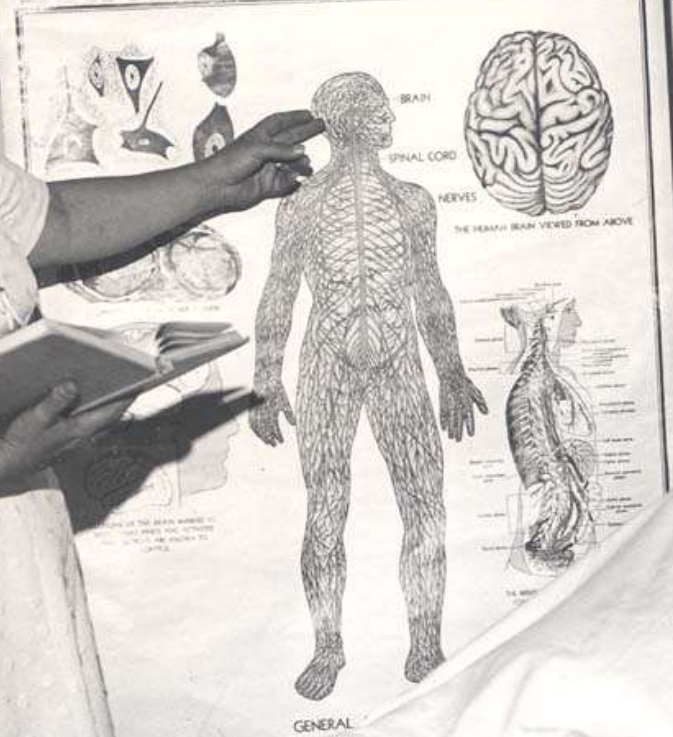






NERVOUS SYSTEM

REPRODUCED BY A. J. HOFFMAN & CO., CHICAGO, ILL.



GENERAL





















Glendale College Foundation
Golf Classic

— 1987 —

GOLF CLASSIC

Oakmont Country Club



NG

6 11 '96





1993-94 PEP SQUAD

Top row from left: Debbie John, Eva Mendez, Marion Wu, Carrie Scroggins
Middle row from left: Candy Brown, Karla Vasquez, Deanda Giovanelli,
Christie Lutz, Traillan Guynes, Leslie Taylor



Business Men Address Students on First Vocational Day

GLENDALE JUNIOR COLLEGE
el Vaquero

Victor Herbert's 'The Red Mill'
Is Scheduled for March 19th

Vol. X

GLENDALE JUNIOR COLLEGE March 10, 1937

No. 19

Play
Game
at
Glendale Hi

EL VAQUERO

Long Beach
Versus
Glendale
Tonight

Vol. X

GLENDALE JUNIOR COLLEGE November 13, 1936

No. 9

Remember
Faculty
Reception
3:00 P. M.

GALLEON
Glendale Junior College

Sophomore
Freshman
Brawl
Friday

Vol. X

GLENDALE JUNIOR COLLEGE GALLEON September 24, 1936

No. 2



Photo by Rebecca Krueger

Campus Reacts to Prop. 30 Win With Relief

By Rebecca Krueger
EL VAQUERO STAFF WRITER

GCC students, faculty and staff breathed a sigh of relief after averting a financial pitfall when early in the morning on Nov. 7 it was announced that Proposition 30 passed with 53.6 percent of the votes.

Interim president of GCC, Jim Riggs, kept waking up throughout the night checking his iPad for the results until his hopes were finally confirmed around 4 a.m.

"I thought all night long, 'What are we going to do if this doesn't pass?' We had plans but there is a human side to those plans," said Riggs. "We know our direction now and we can avoid the catastrophic cuts that were looming out there."

"I didn't know until this morning," said Ron Nakasone, executive vice president of administrative services. "I was pleasantly surprised when I woke up and saw that it passed."

Nakasone flashed a wide, warm smile at the end of the day, which had, until recently, been replaced with a look of exhaustion made up of difficult decisions and hard work.

"I don't think people or staff understood how drastic the cuts were that we were planning on making if the initiative didn't pass."

Cost-saving measures would have included up to 20 faculty layoffs, department cuts, service hour cuts, and a

[See Prop. 30 page 6]

IN THIS ISSUE

News	2-5
Features	6-7,9
Arts and Entertainment	10-12
Sports	13-14
Calendar	15



Photo by Ksenia Rabinovich

CULTURE CLUB: Members of the Armenian Student Association hosted an array of informative booths, performed traditional dances and sold kabobs — an Armenian delicacy.

Opinion:

Swing States Get the Blues

By Sal Polcino
EL VAQUERO STAFF WRITER

Seven of the nine swing states turned blue giving President Barack Obama the electoral votes needed to remain in office for the next four years.

The popular vote, however, was too close for comfort. Obama won by a mere 2 percent. So close that if not for the Electoral College system, the election might be awaiting a recount.

Here's how the electoral college works:

The number of electoral votes of each state (and the District of Columbia) is equal to the number of members that state is entitled to have in Congress. Currently, the total number of electors is 538. There are 435 representatives and 100 senators, plus the three electors from the District of Columbia.

Each state's electors pledged to a presidential and vice-presidential candidate and honor that pledge based on the popular vote. California has the most

[See Swing States, page 8]

Drama Department Revives Classic Play

By Chantal Bevard
EL VAQUERO STAFF WRITER

In this time where women's rights hang in the balance, Director Melissa R. Randel eloquently brings back, "A Doll's House" by Henrik Ibsen, script was adapted by Christopher Hampton, a play that originally challenged women's rights and roles in society when it first opened in 1879. GCC's version of "A Doll's House" opened on Thursday night, immersing audiences into the world of Nora Helmer, played by Leela Loisel.

The play starts out as Nora bursts through the front door with her servant in tow carrying Christmas gifts Nora



Photo by Chantal Bevard

"A DOLL'S HOUSE": Nora Helmer, played by Leela Loisel, argues with her controlling husband, Torvald Helmer, played by Glenn De Bont.

bought while in town.

Although slightly contrived at some points, Loisel's performance is fulfilling to

watch. Though this is Loisel's third production, it is her first speaking part. This is surprising because, as a main

character, Nora appears in nearly every scene, talking almost continuously throughout each while Loisel never misses a beat (even if she did, the audience never knew).

The story takes place over three days: Christmas Eve, Christmas Day and the day after Christmas. As the days pass, Nora changes her views about her life and her role in society. Loisel excels in this character progression, as her attitude and demeanor change to reflect how Nora feels about her life.

After Nora arrives home, her husband, Torvald Helmer, played by Glenn De Bont, then greets her after a short while

[See Doll's House, page 11]





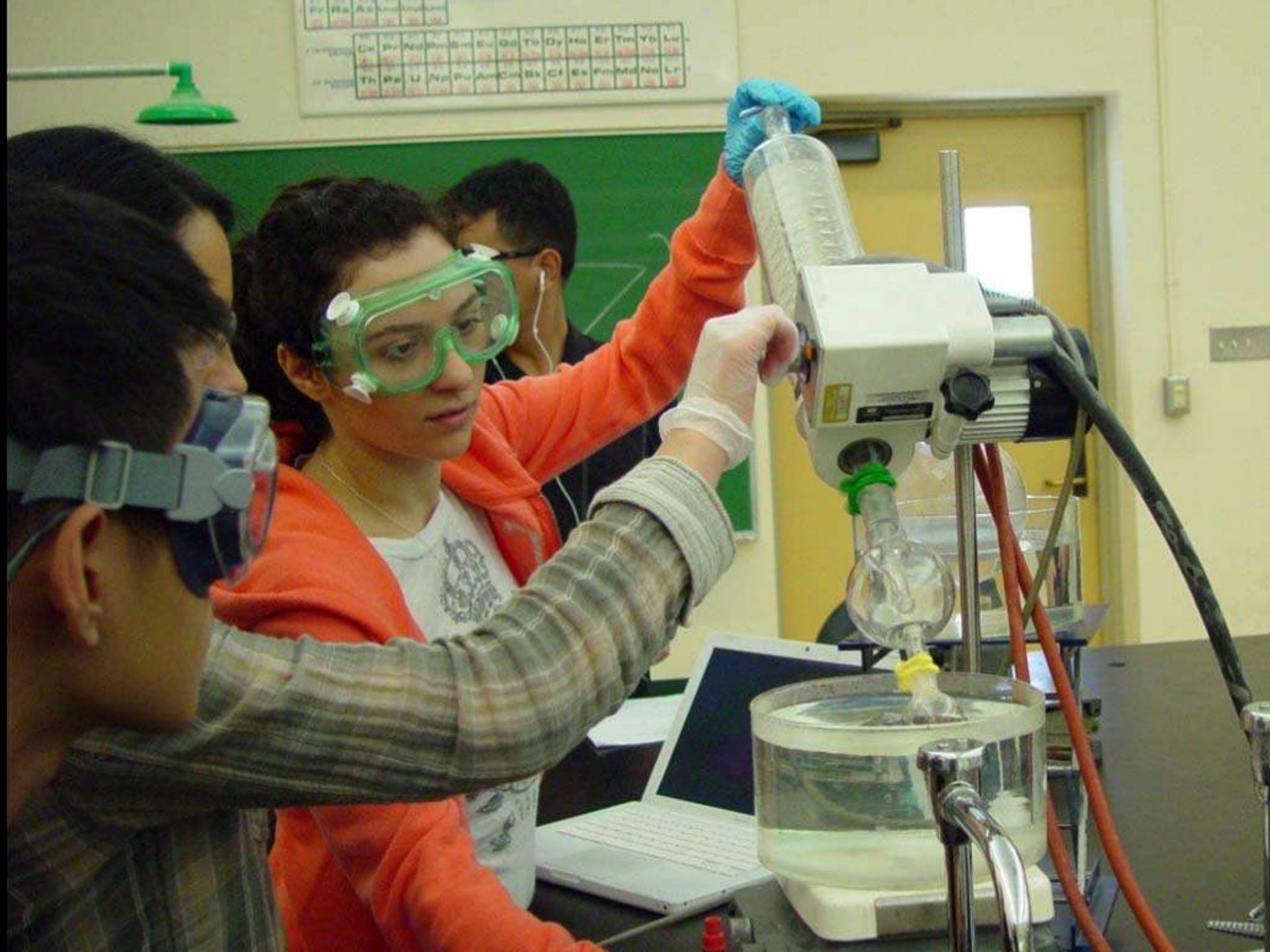












H	He																								
Li	Be	B	C	N	O	F	Ne																		
Na	Mg	Al	Si	P	S	Cl	Ar	K	Ca	Sc	Ti	V	Cr	Mn	Fe	Co	Ni	Cu	Zn	Ga	Ge	As	Se	Br	Kr
Rb	Sr	Y	Zr	Nb	Mo	Tc	Xe	Cs	Ba	Hf	Ta	W	Re	Os	Pt	Au	Hg	Tl	Pb	Bi	Po	At	Rn		
Fr	Ra	Ac	Th	Pa	U	Np	Pu	Am	Cm	Bk	Cf	Es	Fm	Md	No	Lr									



FINANCIAL AID

- 12 **Organize**
- 13 **Install solar panels in your yard**
- 14 **Get Committed**
- 15 **Educate your business, church and school**







Cal State Fullerton





GLENDALE COMMUNITY COLLEGE

JOHN A. BERRY
ADMINISTRATION

1900

Expand Your Knowledge
Stretch Your Will

ALLIANCE
↓
↓
↓
↓

GLENDALE COMMUNITY COLLEGE

JOHN A. BARRY
ADMINISTRATION

1500

