

Nareg Ghazarian
Glendale Community College ©

NAREG GHAZARIAN

PORTFOLIO 2013

GLENDALE COMMUNITY COLLEGE

Content

VILLA SAVOYE	02
• RESEARCH AND PROJECT INFORMATION	03
• FLOOR PLANS	04
• DIAGRAMS	05
• SECTION CUTS	06
• ELEVATIONS	07
• EXPLODED VIEW	08
• RENDERINGS AND MODEL PICTURES	09



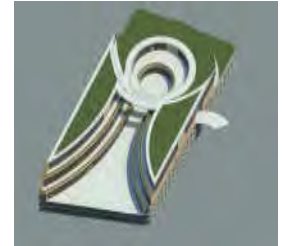
MAGICIAN HOUSE	10
• RESEARCH AND LOCATION INFORMATION	11
• IDEAS AND CONCEPT	12
• FLOOR PLANS	13
• FIRST FLOOR	14
• SECOND FLOOR	15
• DIAGRAMS	16
• SECTION CUTS	17
• ELEVATIONS	18
• EXPLODED VIEW	19
• RENDERINGS AND MODEL PICTURES	20



THREE BAR MIX-USE PROJECT	21
• RESEARCH AND LOCATION INFORMATION	22
• PROJECT INFORMATION AND CONCEPT	23
• FLOOR PLANS	24
• APARTMENTS	25
• DIAGRAMS	26
• SECTION CUTS	27
• ELEVATIONS	28
• RENDERINGS MODEL PICTURES	29



LITTLE TOKYO	30
• RESEARCH, SITE INFORMATION AND CONCEPT	31
• LOCATION RESEARCH	32
• PARKING	33
• FLOOR PLANS	34
• SECTION CUTS	35
• ELEVATIONS	36
• EXPLODED VIEW AND MODEL PICTURES	37



MACARTHUR PARK MIX-USE PROJECT	38
• PROJECT INFORMATION	39
• CONCEPT	40
• PARKING	41
• GROUND FLOOR	42
• CHILD DAYCARE CENTER	43
• COMMUNITY CENTER	44
• APARTMENTS	45
• DIAGRAMS	46
• SECTION CUTS	47
• ELEVATION	48
• RENDERINGS AND MODEL PICTURES	49





Nareg Ghazarian

Glendale Community College, CA

VILLA SAVOYE

Research

VILLA SAVOYE IS A MODERNIST VILLA LOCATED IN POISSY, IN THE OUTSKIRTS OF PARIS, FRANCE.

IT WAS DESIGNED BY SWISS ARCHITECTS LÉCORBUSIER AND HIS COUSIN, PIERRE JEANNERET, AND WAS BUILT BETWEEN 1928 AND 1931 USING REINFORCED CONCRETE.

A MANIFESTO OF LE CORBUSIER'S "FIVE POINTS" OF NEW ARCHITECTURE, THE VILLA IS REPRESENTATIVE OF THE BASES OF MODERN ARCHITECTURE, AND IS ONE OF THE MOST EASILY RECOGNIZABLE AND RENOWNED EXAMPLES OF THE INTERNATIONAL STYLE.

THE VILLA SAVOYE IS PROBABLY CORBUSIER'S BEST KNOWN BUILDING FROM THE 1930s, IT HAD ENORMOUS INFLUENCE ON INTERNATIONAL MODERNISM. IT WAS DESIGNED ADDRESSING HIS EMBLEMATIC "FIVE POINTS", THE BASIC TENETS IN HIS NEW ARCHITECTURAL AESTHETIC:

1. SUPPORT OF GROUND-LEVEL PILOTIS, ELEVATING THE BUILDING FROM THE EARTH AND ALLOWED AN EXTENDED CONTINUITY OF THE GARDEN BENEATH.
2. FUNCTIONAL ROOF, SERVING AS A GARDEN AND TERRACE, RECLAIMING FOR NATURE THE LAND OCCUPIED BY THE BUILDING.
3. FREE FLOOR PLAN, RELIEVED OF LOAD-BEARING WALLS, ALLOWING WALLS TO BE PLACED FREELY AND ONLY WHERE AESTHETICALLY NEEDED.
4. LONG HORIZONTAL WINDOWS, PROVIDING ILLUMINATION AND VENTILATION.
5. FREELY-DESIGNED FACADES, SERVING ONLY AS A SKIN OF THE WALL AND WINDOWS AND UNCONSTRAINED BY LOAD-BEARING CONSIDERATIONS.

THE HOUSE WAS ORIGINALLY BUILT AS A COUNTRY RETREAT ON BEHEST OF THE SAVOYE FAMILY. DURING WWII THE JEWISH SAVOYE FAMILY WAS SENT TO CONCENTRATION CAMPS BY THE NAZIS WHO TOOK OVER THE HOUSE AND USED IT FOR STORAGE. AFTER BEING PURCHASED BY THE NEIGHBORING SCHOOL IT PASSED ON TO BE PROPERTY OF THE FRENCH STATE IN 1958, AND AFTER SURVIVING SEVERAL PLANS OF DEMOLITION, IT WAS DESIGNATED AS AN OFFICIAL FRENCH HISTORICAL MONUMENT IN 1965. IT WAS THOROUGHLY RENOVATED FROM 1985 TO 1997, AND UNDER THE CARE OF THE CENTRE DES MONUMENTS NATIONAUX, THE REFURBISHED HOUSE IS NOW OPEN TO VISITORS YEAR-ROUND.



Site Map

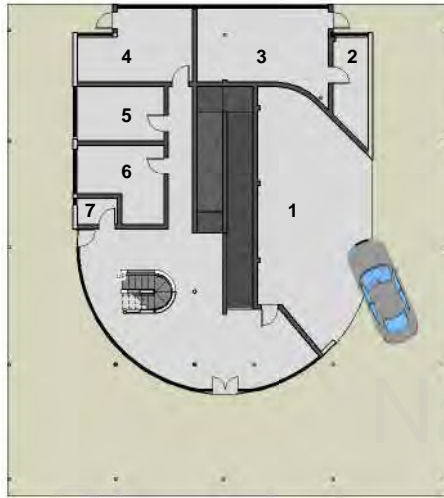


Villa Savoye

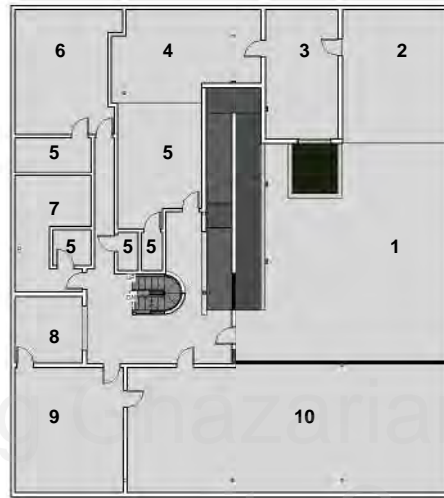


Le Corbusier

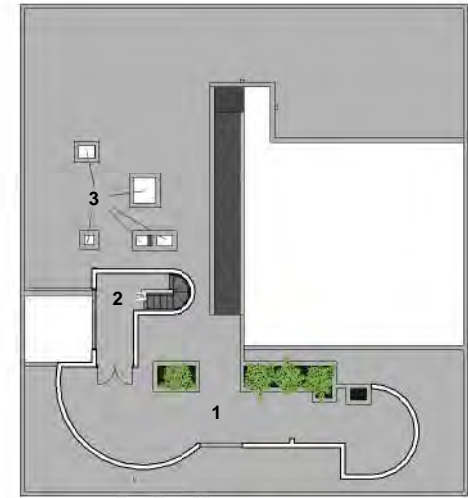
Floor Plans



① Level 1
1/8" = 1'-0"



② Level 2
1/8" = 1'-0"



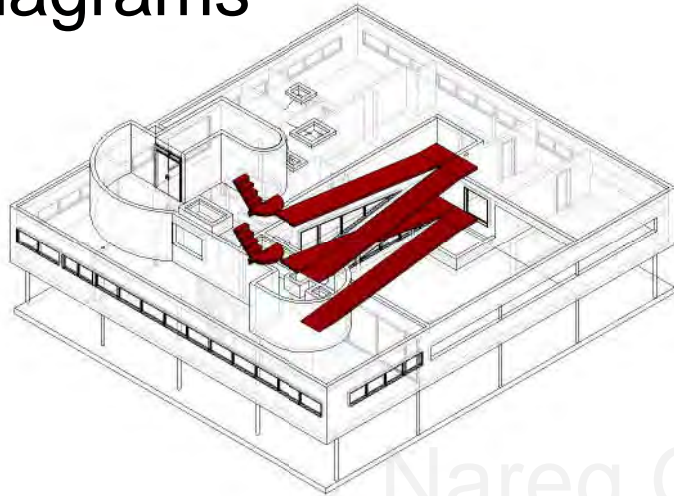
③ Roof
1/8" = 1'-0"

1. Garage
2. Bathroom
3. Drivers Room
4. Laundry
5. Maids Room
6. Maids Room
7. Bathroom

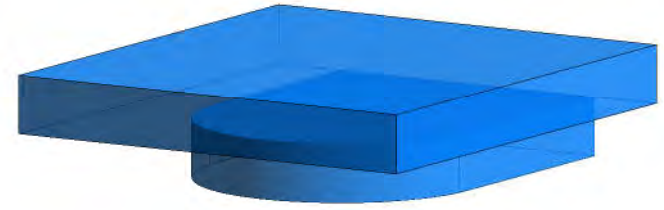
1. Terrace
2. Hanging Garden
3. Private Sitting Room
4. Master Bedroom
5. Bathroom
6. Sons Bedroom
7. Guest Room
8. Kitchen Terrace
9. Kitchen
10. Living Room

- Roof
1. Roof Garden
 2. Hallway
 3. Skylights

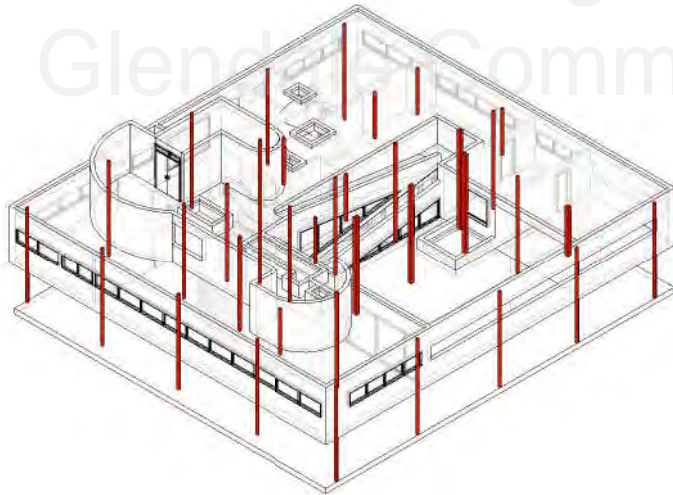
Diagrams



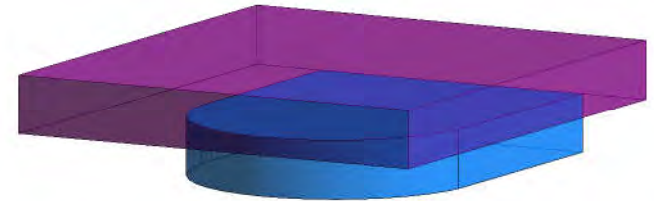
③ Circulation



② Parti diagram



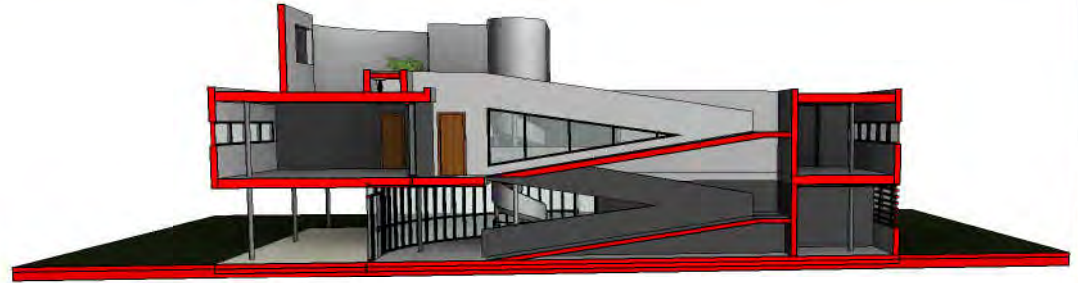
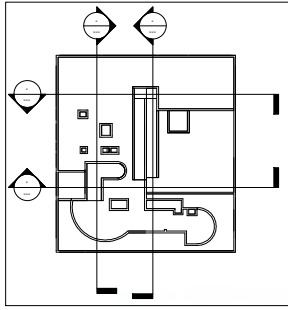
⑤ Structure Diagram



- Workers Floor
- Family Floor

① Program Diagram

Section Cuts



1 Section Cut From The East



4 Section Cut From The West



3 Section Cut From The North

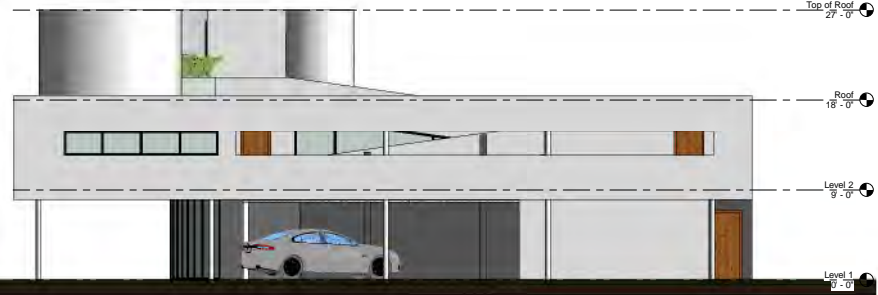


2 Section Cut From The South

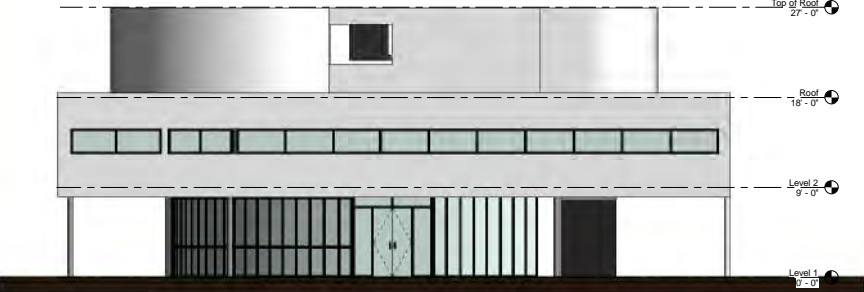
Elevations



① North
3/16" = 1'-0"



② East
3/16" = 1'-0"



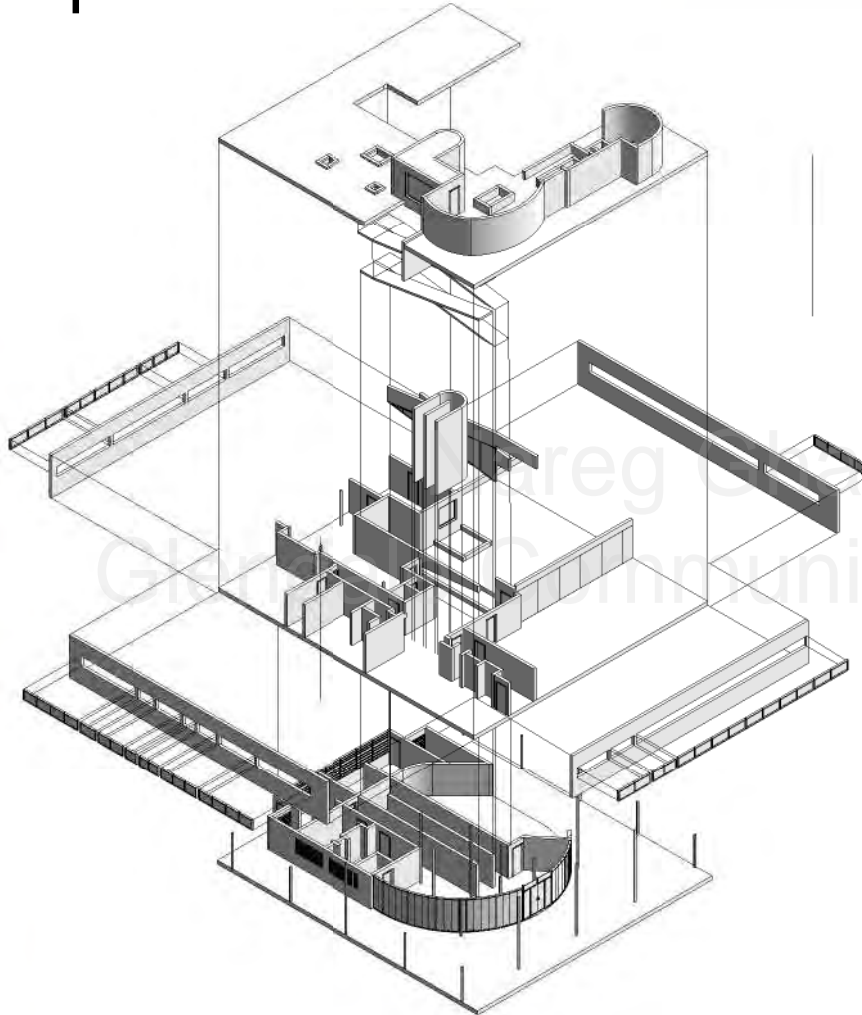
③ South
3/16" = 1'-0"



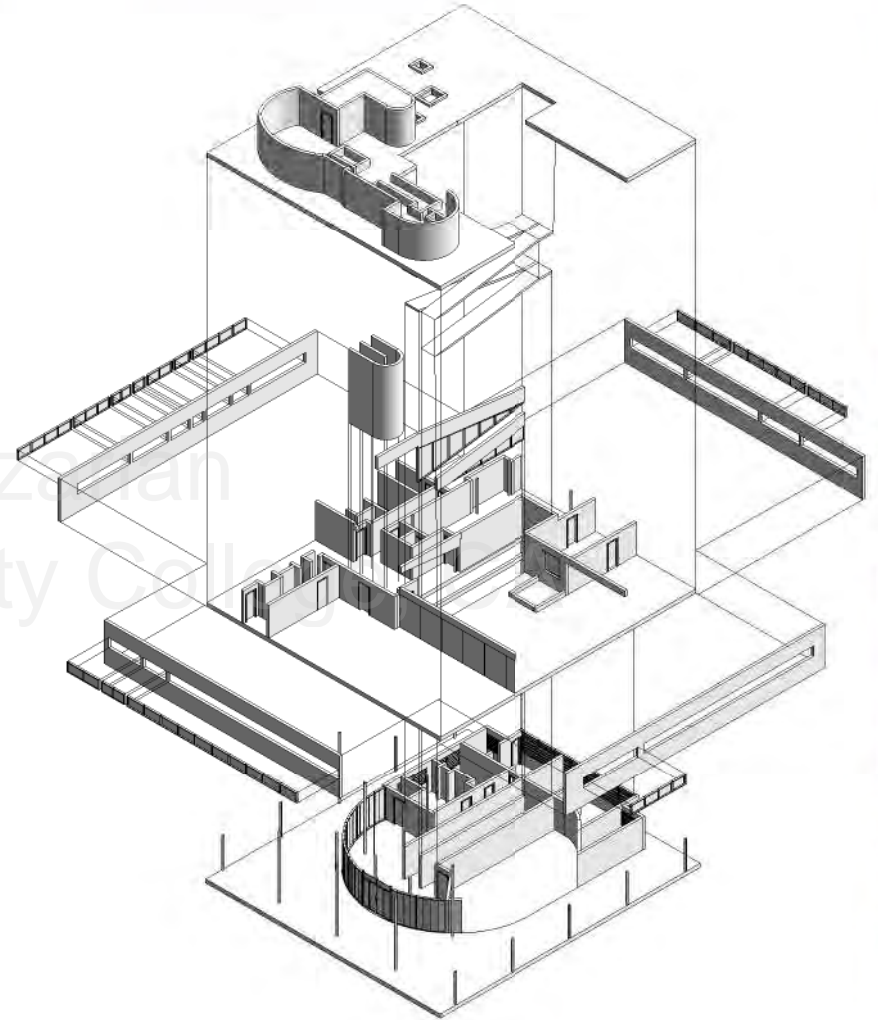
④ West
3/16" = 1'-0"

Nareg Ghazarian
Glendale Community College, CA

Exploded View

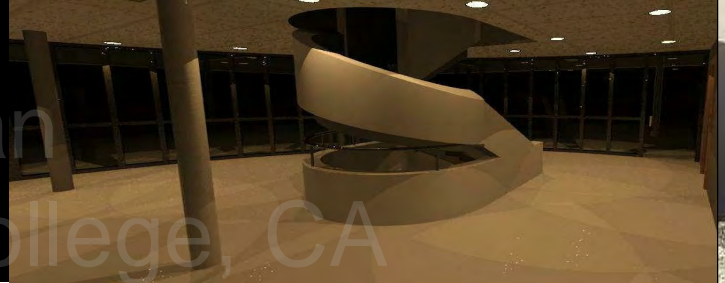


① Exploded View SW



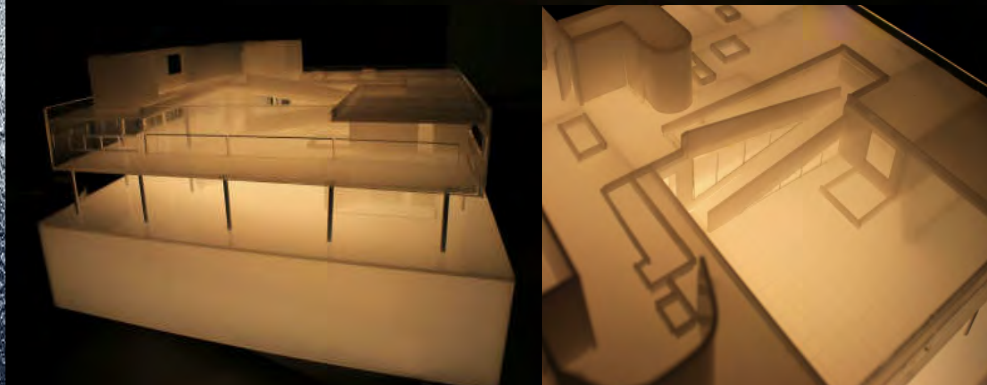
② Exploded View NE

Renderings and Model Pictures

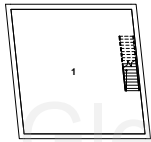


Hayley Ghazarian
Glendale Community College, CA

When building my Villa Savoye model I knew that I wanted to use a transparent material so that light would shine through it; Therefore, I decided to use milky white plexi glass combined with a fully transparent plexi glass. I used the white plexi for the interior walls and floors and the fully transparent material for the exterior. The reason I made the exterior wall out of fully transparent material was because it would make it a lot easier to look in versus just looking in through small windows. The reason for why I decided to make the interior walls and floors out of white plexi was simply because I wanted them to stand out and the fact that the material isn't very transparent worked out great because you would not mix up the rooms because they had a clear separator.

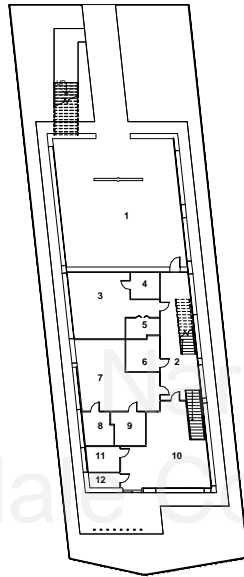


Floor Plans



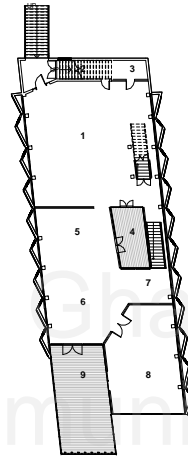
① Basement
1/16" = 1'-0"

1. Magicians room



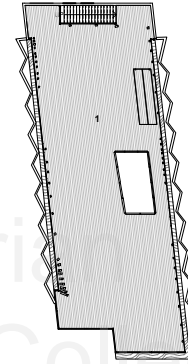
② Level 1
1/16" = 1'-0"

1. Garage
2. Hallway
3. Kids Bedroom
4. Bathroom
5. Walk-in Closet
6. Laundry
7. Guest Bedroom
8. Walk-in Closet
9. Bathroom
10. Master Bedroom
11. Bathroom
12. Walk-in Closet



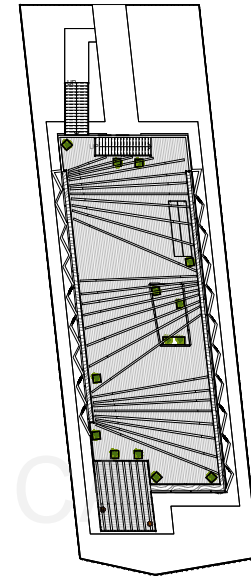
③ Level 2
1/16" = 1'-0"

1. Living Room
2. Walk-in Closet
3. Guest Bathroom
4. Small Garden
5. Kitchen
6. Dining Room
7. Piano Corner
8. Office
9. Balcony



④ Roof
1/16" = 1'-0"

1. Rooftop Garden



⑤ Site
1/16" = 1'-0"



Neg Ghazarian
Glendale Community College, CA

MAGICIAN HOUSE

First Floor



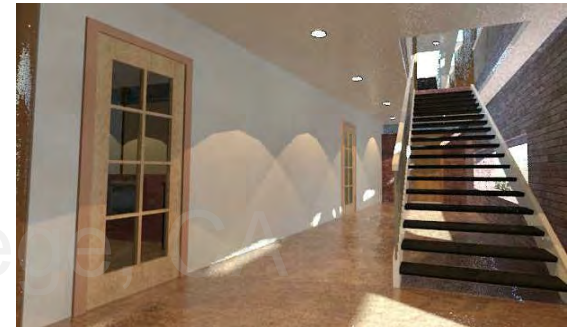
Level 1
1" = 10'-0"

The site we got is angled about 5 degrees making the whole building seem angled from the outside and so it is; however, I really wanted to use this to my advantage and provide an illusion inside the house using the weird angle of the site. I provided an illusion by making all the walls on the first floor 90 degrees making the exterior walls feel misplaced versus the inside walls. If you look at the floor plan for the first floor you'll see that if it wasn't for the exterior walls, you would not feel like the house was built on an angle.

Like I mentioned before, I placed all the columns that hold up the second floor on the first floor so in order to avoid having all the guests seeing the columns, I decided to make the entire first floor a private space that is only for the family.



Garage
12" = 1'-0"



Hallway
12" = 1'-0"



Master Bedroom
12" = 1'-0"

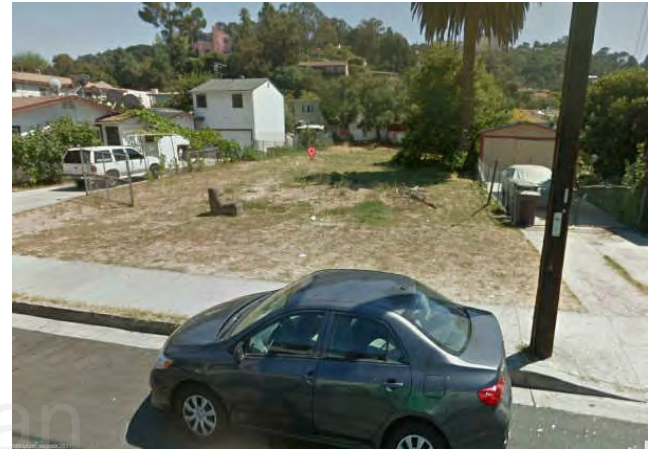
Research and Location Information

Address: 708 E. Palmer Avenue, Glendale, Ca 91205

AREA: This site is located in the heart of Glendale California. The neighborhood consists of everything from single family homes to apartment buildings. The site is close to two parks with the biggest one being Palmer Park located only 200 feet away. You can also find several shops and restaurants within a walking distance from the site.

CULTURAL GEOPGRAPHY: Glendale is well known for its multi-cultural community that consists mainly of Hispanics, Armenians and Caucasians.

Physical Geography: Glendale is located about 10 minutes from Downtown Los Angeles and is seen as a suburb. Glendale has a pleasant Mediterranean climate which provides great weather for almost the entire year. Glendale also has several mountains and this site happens to be located at the base of one.



Current Site

708 E. PALMER AVENUE - GLENDALE, CA



Site Map



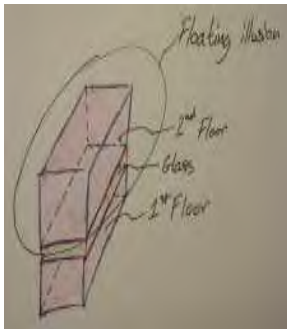
Zoning Map

Ideas and Concept

Client: The client I got was a magician so after spending a lot of time researching his profession I came to the conclusion that mainly what a Magician does is to play tricks on the eye and so I wanted to do the same with my design.

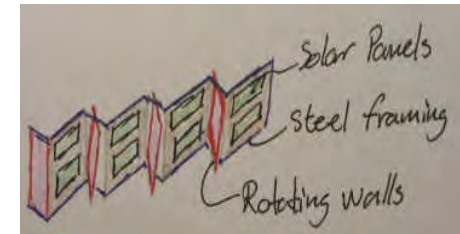
Concept: Illusion and Hidden features

1. My first idea was flotation. It took me a while to be able to figure out how I could use this in my design; however, I think I finally solved it! I found a reasonable way to achieve this illusion while respecting the laws of physics. I made the top part of my really thick and bulky looking walls out of glass on the first floor; therefore, making it seem like it was the glass holding up the second floor which really is not possible. In reality, I have placed numerous columns inside the house but none of them are close to the outside walls so people walking past the house will never see the columns holding up the second floor leaving them puzzled (Just like a magician). Yet this will only fool the people walking by the house but I wanted to be able to fool more people with this trick so I decided to put my main entrance on the second floor so that even the house guests won't be exposed to the columns located on the first floor.



2. My second idea was to give the house owners a clear view of the outside while limiting the view of the inside from the street. I achieved this by placing these zig-zag shaped walls on the exterior with patterns on them. This makes it really hard to see in from the outside but if you look out from the inside then you will be provided with a clear view of the street. However, this is not the only function of these zig-zag shaped walls; they actually serve numerous other functions. On the back part of the walls you'll find solar panels collecting energy from the sun throughout the day. I decided to place these solar panels for two reasons. The main reason is because of the Mediterranean climate in California that provides us with constant sunlight and this is a great way of taking advantage of it. The second reason for why I placed them where I placed them is because I wanted to hide them in plain sight just like a magician does with his tricks. The panels are not visible from the street and the only people who see these panels are the neighbors or if someone were to go to the backyard.

The angled walls are mounted on a steel framing that goes under and above them keeping them in the place but also makes it possible for the walls with patterns to rotate and open letting in more sunlight and giving a better view of the outside if needed.



3. My third concept was to make outdoor space that gives the feel of an indoor space and I did this to my rooftop garden and my balcony in the back of the house. I simply placed wooden beams forming like a roof. There is a space between each beam letting in sunlight and fresh air so almost the entire rooftop garden is covered yet it is still an outdoor space. I also really like the shade all the beams provide and it really gives the structure some movement because the shades provided from the beams move throughout the day depending on the sun's location.

I also placed a hidden door on the roof which leads directly into the living room on the second floor. This gives a quick access to the roof from the inside of the house; therefore, they won't be forced to walk out to take the stairs and also in case of an emergency, you have a second way to exit the house.



Second Floor

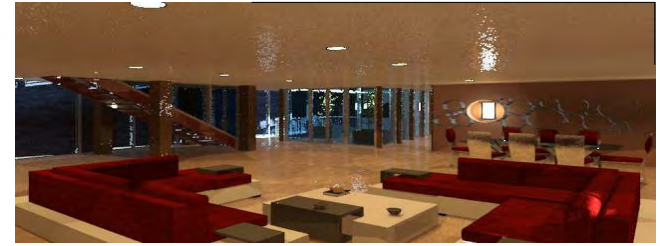


Level 2
1/8" = 1'-0"

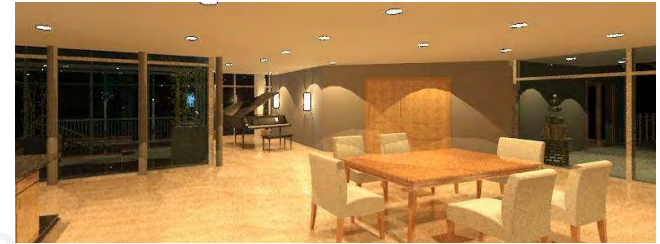
On the second floor I decided to make all the exterior walls out of glass and I did this to make room for as much natural light as possible but I later learned that it was a double edged sword because all the sunlight will heat up the whole house making it uncomfortable to be inside during a sunny day so the zig-zag walls helped me solve this problem, they provide a much needed shading on my glass walls controlling the heat.

I gave the second floor a very open floor plan because I don't really have any load bearing walls because I placed all my columns on the sides and they hold up the roof as well as the steel system I design to hold up my zig-zag walls.

Due to the exterior walls being made out of glass and having walls right in front of it on the outside, it made it impossible for me to place windows that are able to be opened. This forced me to come up with another way to provide fresh air into the house. I solved this problem by placing a small garden inside the house on the second floor. This way they could just open the doors and get a fresh summer breeze or they could even go out and sit there for a while and enjoy the wonderful weather. This little garden also provides extra natural light.



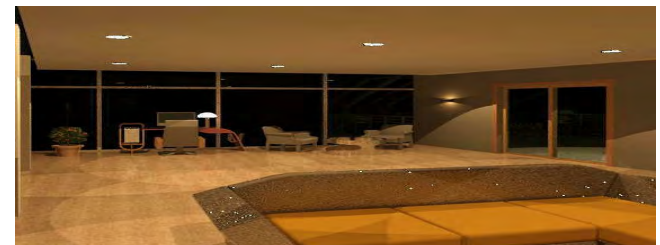
Living Room
12' = 1'-0"



Dining / Dining
12' = 1'-0"

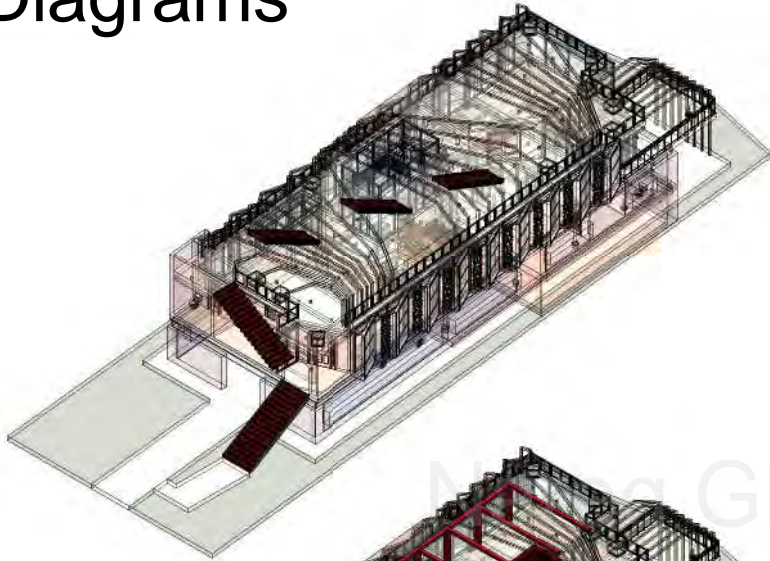


Dining Room / Kitchen
12' = 1'-0"

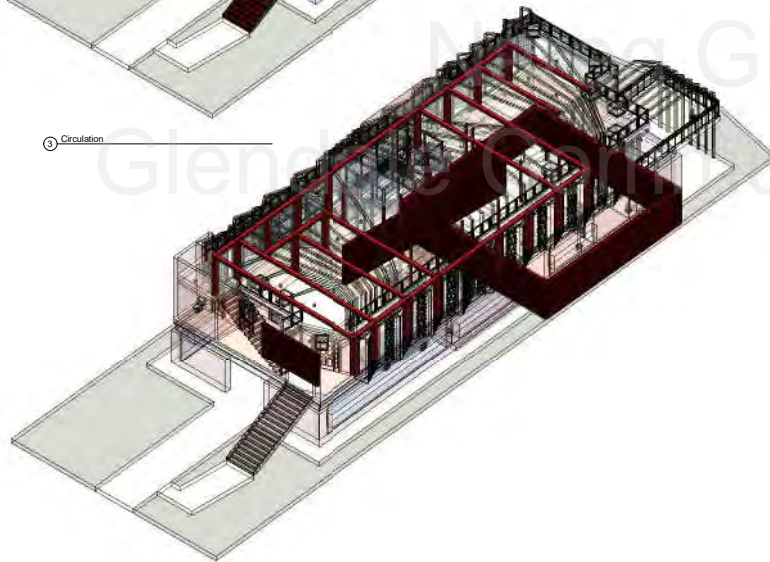


Office
12' = 1'-0"

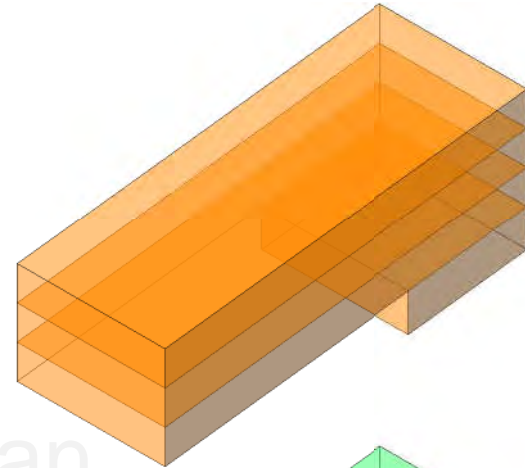
Diagrams



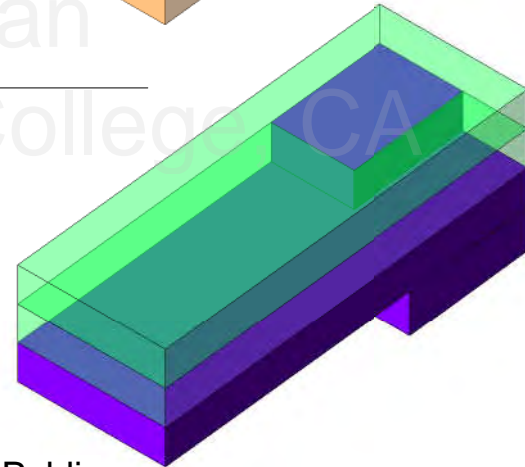
③ Circulation



② Structure



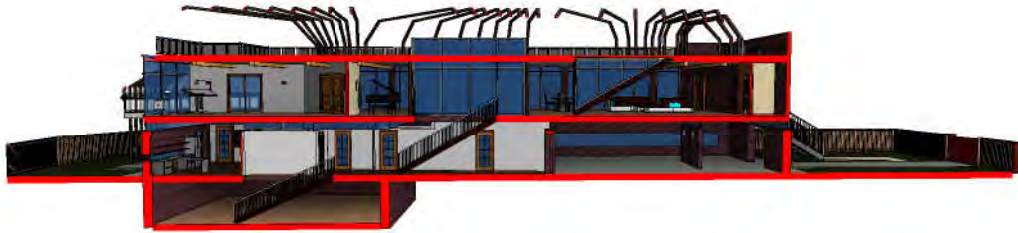
① Part



■ Public
■ Private

① Program

Section Cuts



① Section Cut From The East



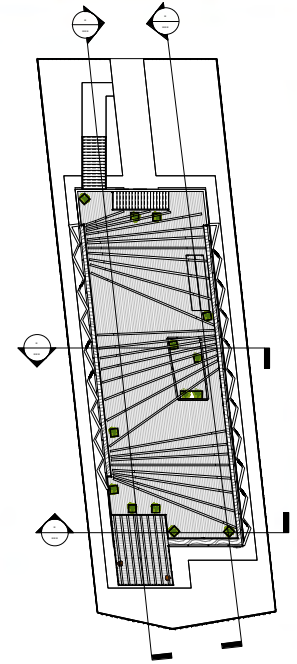
② Section Cut From The West



③ Section Cut From The South



④ Section Cut From The North



⑤ Section Cuts
1/16" = 1'-0"

Elevations



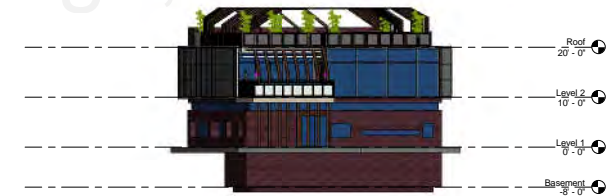
1 East
3/32" = 1'-0"



3 North
3/32" = 1'-0"



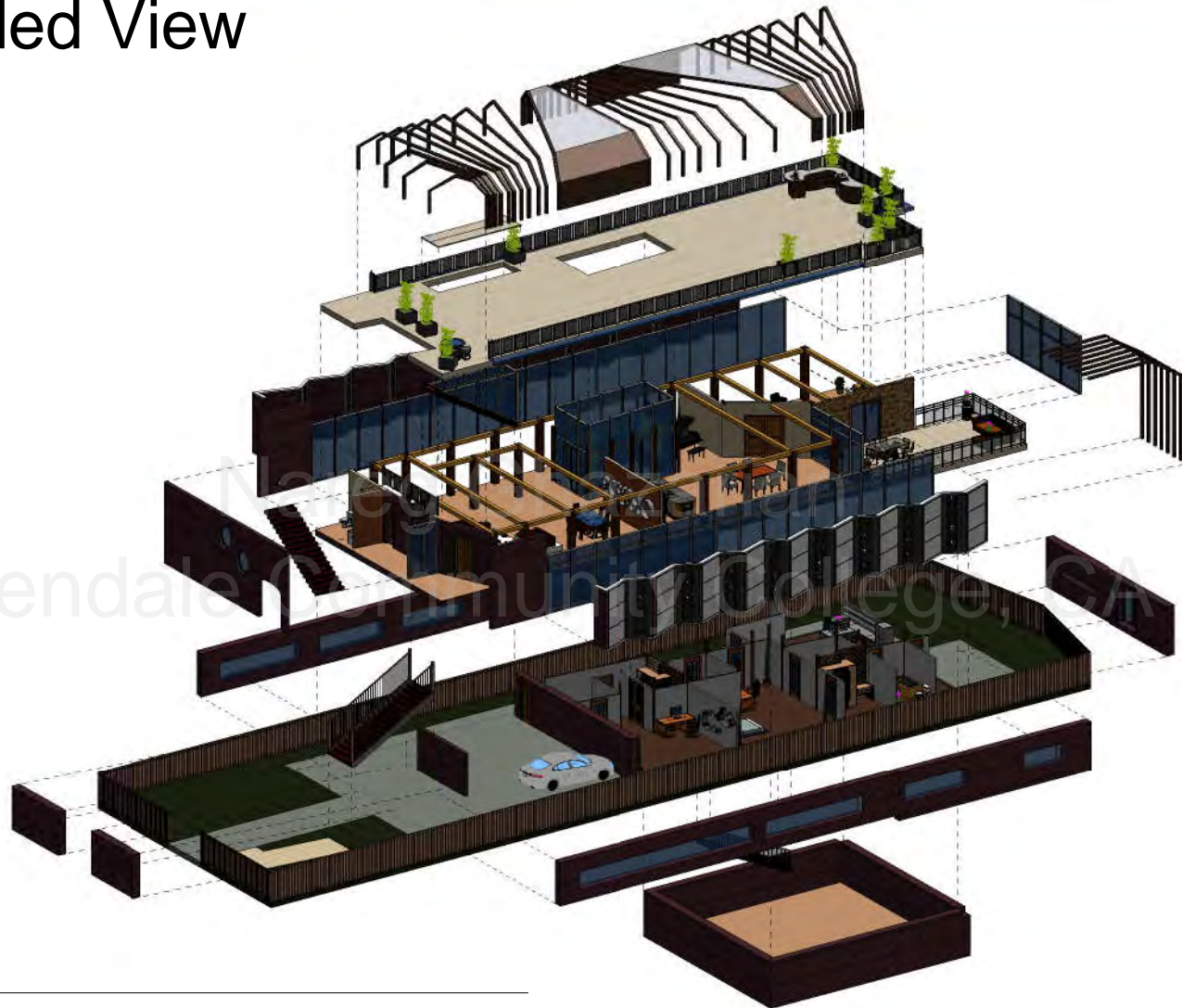
2 West
3/32" = 1'-0"



4 South
3/32" = 1'-0"

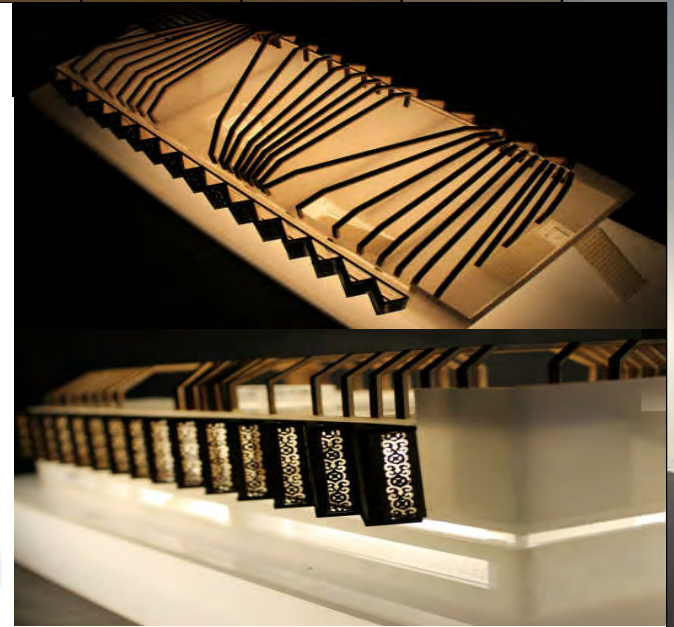
Nareg Ghazarian
Glendale Community College, CA

Exploded View



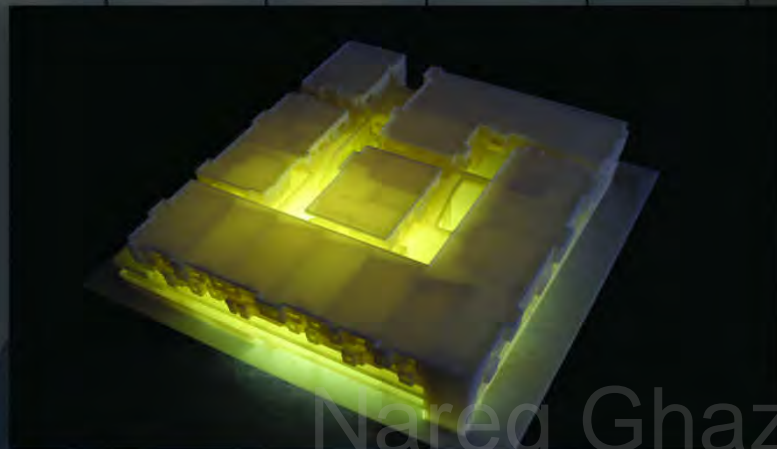
① Exploded View

Renderings and Model Pictures



I decided to make my model out of a transparent material because I wanted to be able to place a lamp underneath and light up the whole model. I went with the milky white plexi glass material because even though I wanted the material to be transparent, I didn't want it to affect my design and I felt like the white material would best deliver the results I wanted. With the white plexi glass you see all the walls very clearly, yet it has no problems letting the light shine through the model and also it's a very subtle color so it doesn't take away from my overall design. There were a few features I wanted highlighted on my model and that was my sidewall panels, structure and the roof cover. In order to make these features really pop, I had to make them in a darker material and so I went with basswood. The wood itself isn't really that dark but when cut with a laser cutting machine, it leaves a very stylish burn mark on the sides giving that darker look that I was after all along.





Nareg Ghazarian

Glendale Community College, CA

THREE BAR

Research and Location Information

Architects: Paul Lewis, Marc Tsurumaki, David J. Lewis (LTL Architects).

Client: UIA Management LLC

Location: Miami Beach, FL

Year of Design: 2006

Size: 85,000 sq. ft.

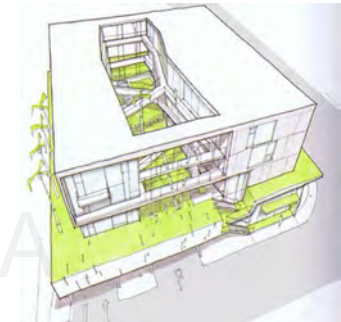
Company Information: LTL Architects is a design intensive architecture firm founded in 1997 by Paul Lewis, Marc Tsurumaki and David J. Lewis, located in New York City. LTL Architects engages a diverse range of work, from large scale academic and cultural buildings to interiors and speculative research projects. LTL Architects realizes inventive solutions that turn the very constraints of each project into the design trajectory, exploring opportunistic overlaps between space, program, form, budget and materials.

Project Information: Exploiting the desirability of outdoor space in South Florida, the designs for the project amplify the possibilities of regional architectural strategies (balconies, terraces, atria, courtyard, and breezeways) by recombining them with unexpected ways to maximize the connections between interior and exterior space.

Reflecting its position at the border between a commercial zone and the residential neighborhoods to its west, the project incorporates retail, parking, and live-work spaces. While in most mixed-use projects programmatic zones are indifferently stacked one on the other, this design creates overlaps and interdependencies between its component parts. The principle design challenge was the relationship between the units and the exterior spaces they defined. Various schemes (Split bar, L-shape, and Three bar) were considered that negotiated differing typologies of exterior space, relationships between living and working, economies of construction, and market forces determining unit sizes and numbers.



Three Bar



Split Bar

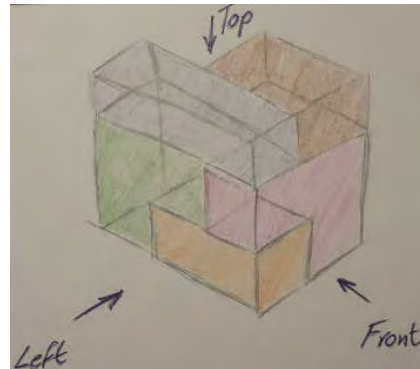
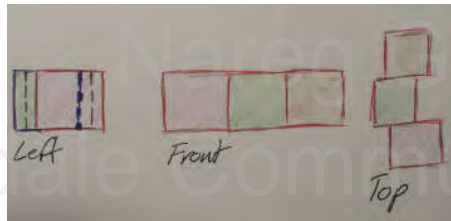
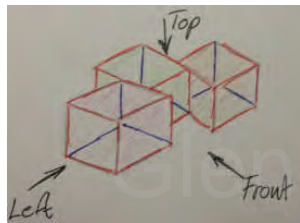


L-Shape

Project Information and Concept

The first assignment for our Commercial Architecture class (Arch 130) was to take a design from an architect and make it our own. We didn't receive any floor plans or measurements so all we had to go on was a few 3D views.

The way i made this design my own was through completely changing the exterior walls. I did this by having some of the walls sticking out and some going inwards giving some interesting floor plans inside the apartments.

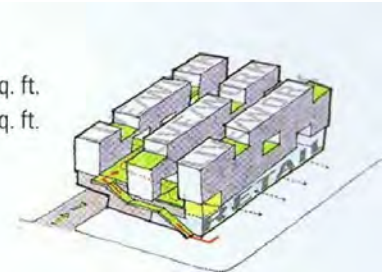


We got the opportunity to design our own floor plan for this project so i decided to use a intertwine layout for the apartments. I placed several apartments with 2 floors making the three apartment floors connected through a tetris-like design.

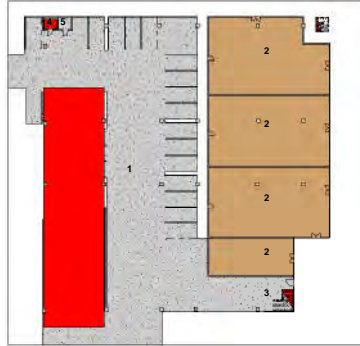


Three bar

Total FAR	35,700 sq. ft.
Max FAR	44,904 sq. ft.
Density	0.79

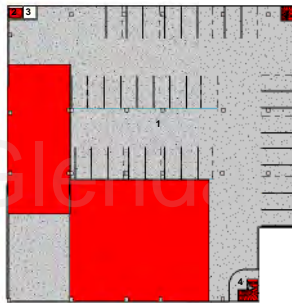


Floor Plans



① Level 1
1" = 30'-0"

1. Parking
2. Retail
3. Stairs
4. Elevator
5. Trash



② Level 2
1" = 30'-0"

1. Parking
2. Elevator
3. Trash
4. Stairs



③ Level 3
1" = 30'-0"

1. Parking
2. Elevator
3. Trash
4. Courtyard
5. Apartments



④ Level 4
1" = 30'-0"

1. Elevator
2. Trash
3. Office
4. Laundry
5. Apartments



⑤ Level 5
1" = 30'-0"

1. Elevator
2. Trash
3. Office
4. Apartments



⑥ Level 6
1" = 30'-0"

1. Rooftop

Apartments



① Level 3
1/16" = 1'-0"

- 1 Bedroom (2 level) Apartment
- 1 Bedroom Apartment
- 1 Bedroom (2 level) Apartment
- 2 Bedroom Apartment



② Level 4
1/16" = 1'-0"

- 1 Bedroom (2 level) Apartment
- 1 Bedroom (2 level) Apartment
- 1 Bedroom Apartment
- 1 Bedroom (2 level) Apartment
- 1 Bedroom Apartment
- 1 Bedroom (2 level) Apartment
- 2 Bedroom (2 level) Apartment
- 1 Bedroom (2 level) Apartment

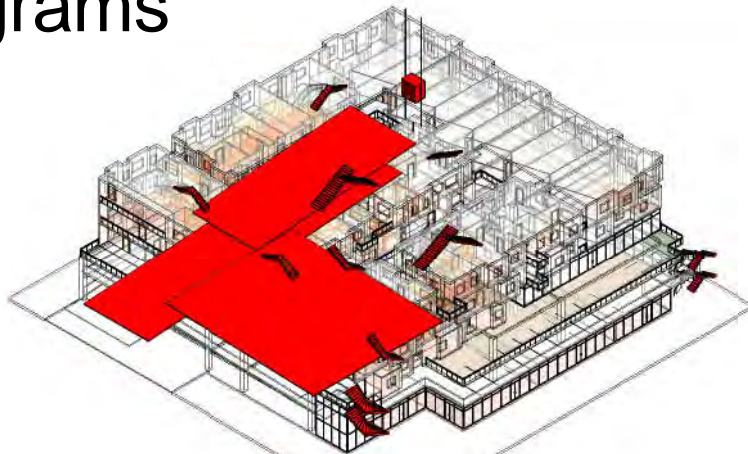


③ Level 5
1/16" = 1'-0"

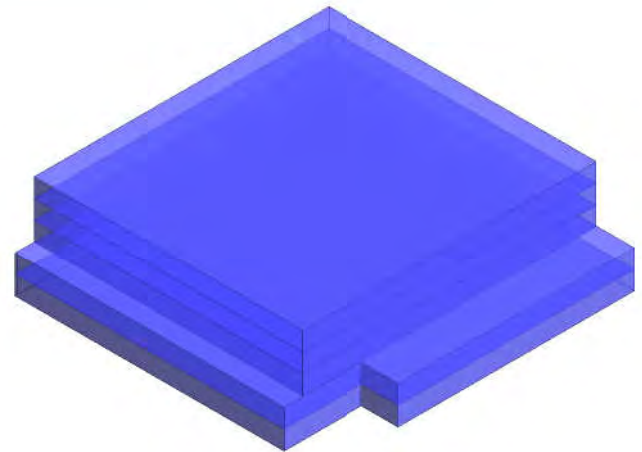
- 2 Bedroom Apartment
- 1 Bedroom Apartment
- 1 Bedroom (2 level) Apartment
- 1 Bedroom Apartment
- 1 Bedroom (2 level) Apartment
- 2 Bedroom Apartment
- 1 Bedroom (2 level) Apartment

Here you can see all the apartments color-coded with each color representing an apartment. The same color on different levels indicates that they belong to the same apartment unit. As you can see I have a very intertwine floor plan with units that reach to the level above and even one that has its bedroom located on the floor below.

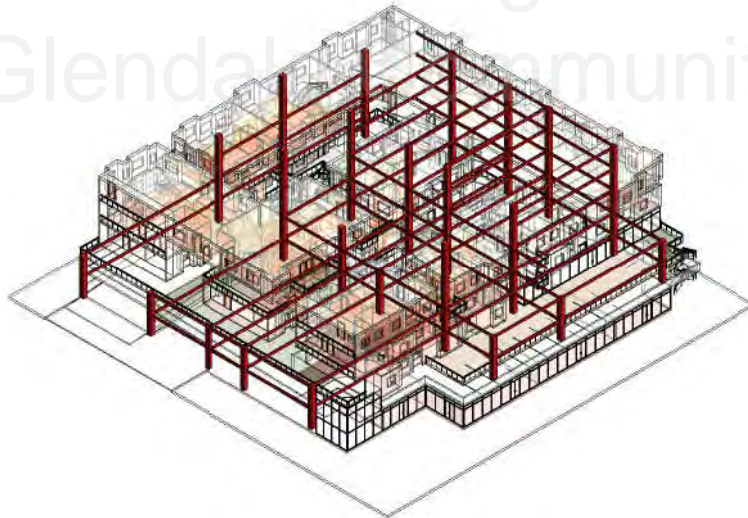
Diagrams



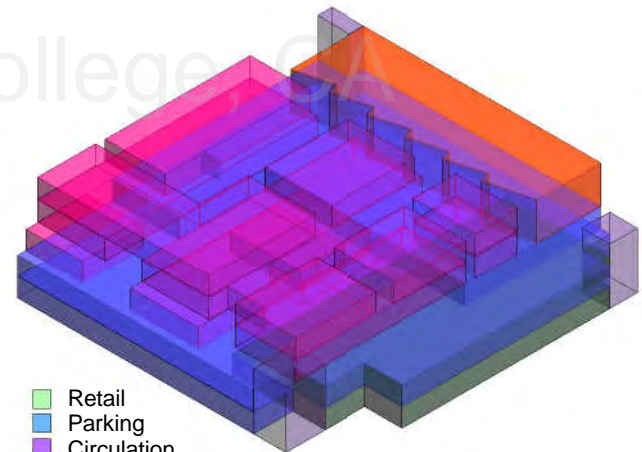
② Circulation



① Plan



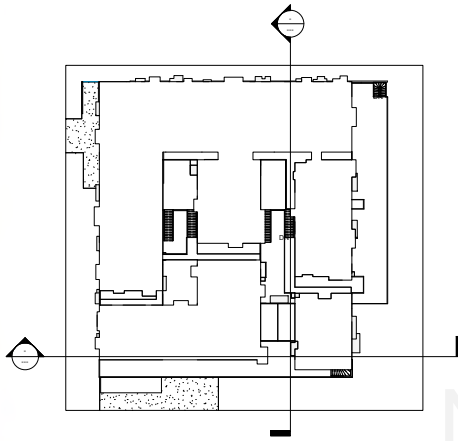
③ Structure



- ④ Retail
- ④ Parking
- ④ Circulation
- ④ Apartments
- ④ Office

④ Program

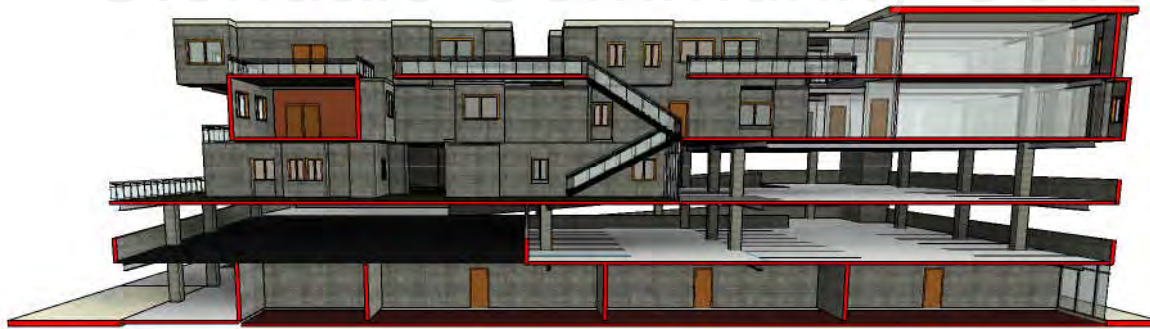
Section Cuts



1 Section Cuts
1" = 30'-0"



1 3D View 1



2 3D View 2

Nareg Ghazarian
Glendale Community College, CA

Elevation



① North
1/16" = 1'-0"



② South
1/16" = 1'-0"



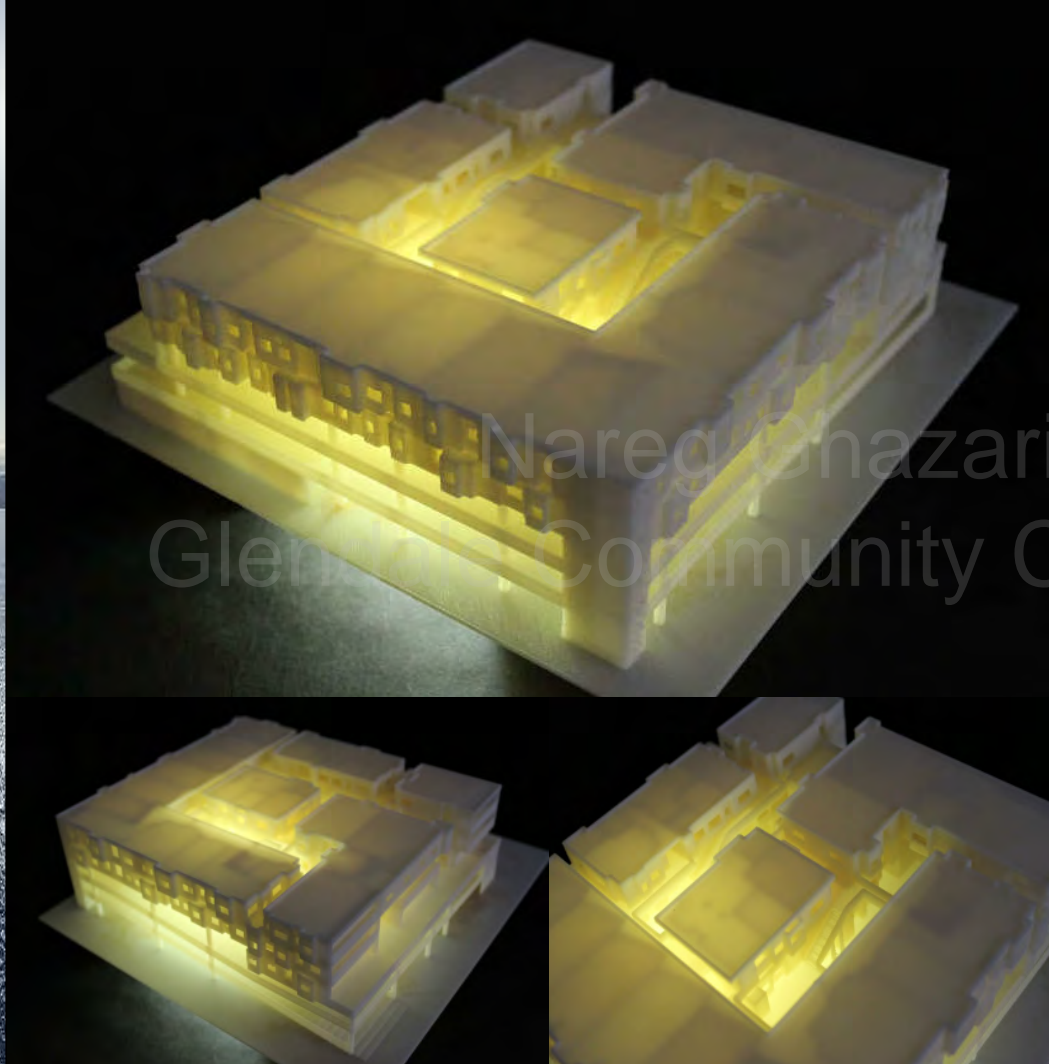
③ East
1/16" = 1'-0"



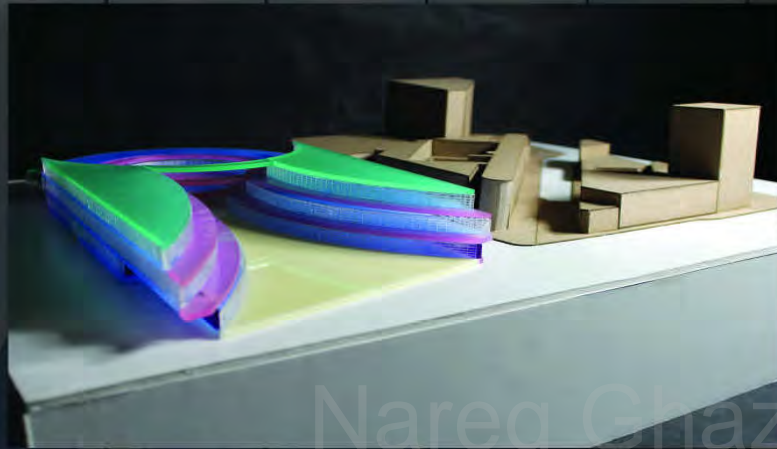
④ West
1/16" = 1'-0"

Nareg Gazarian
Glendale Community College

Renderings and Model Pictures



For this Model I got to use the RP (Rapid Prototyping) machine. **Rapid Prototyping** is a group of techniques used to quickly fabricate a scale model of a physical part or assembly using three-dimensional computer aided design (CAD) data. This was my first time and my model came out great. My model is made out of Ivory colored plastic in a 1/32 scale.



Nareg Ghazarian

Glendale Community College, CA

LITTLE TOKYO

Research and Site Information

Location: 282 East 2nd Street, Los Angeles, CA

We were asked to design and propose a brand new commercial Mix-use high rise building with circulation or program connecting to a building [Weller Court] across 2nd street.

Little Tokyo is the smallest Downtown districts, but it packs a lot into just a few square blocks. The Boundary starts on Temple Street to the north, Fourth Street to the south, Alameda Street to the east, and Main Street on the west.

Established in the 1880s, the neighborhood has weathered Japanese internment in World War II, a Devastating city redevelopment plan that destroyed many of its historic structures starting in the 1970s, and changing demographics.

Little Tokyo's cultural hither is the Japanese American National Museum, which divides its exhibits Between old and new, as well as the Japanese American Cultural and Community Center, the Geffen Contemporary [MOCA] and a number of other theaters.



Current Site



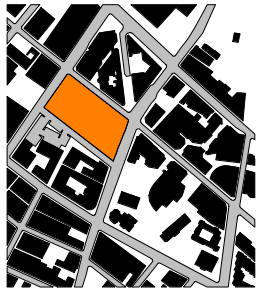
Street View Facing Downtown

Concept

This site is located in the heart of Little Tokyo and there is a lot of people going in and out of this area daily. Unfortunately this area has no park close by and so I wanted to give my mall a lot of outdoor space with a lot of greenery giving people a place to go if they want to enjoy a great day and just relax. This will generate more traffic through my mall which leads to a lot more sales and that's also why I decided to place the outdoor space on the second and third floor forcing the people to walk past all the retails.

My second idea was to have a simple design that did not block to much of your view once you're in the mall making it easy to see all the stores and what they have to offer; however, I made 3 primary paths you can take through the mall instead of having a circular path that everyone takes. I made multiple paths in order to make it take longer for people to see all the stores making them stay longer in the mall increasing the chance of them seeing something they like.

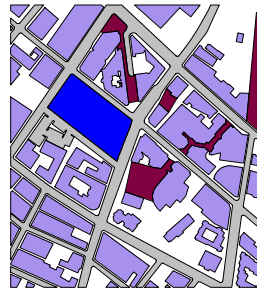
Location Research



LEGEND:
PROJECT LOCATION



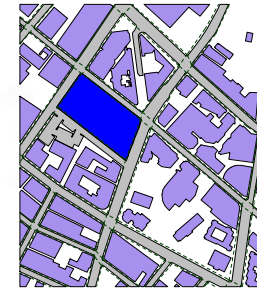
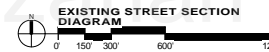
LEGEND:
RETAIL / APARTMENT MIX-USE
APARTMENT
HOTEL
RETAIL
MUSEUM / CIVIC BUILDING
OFFICE BUILDING
PARKING LOT
PARKING STRUCTURE



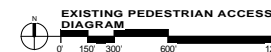
LEGEND:
RETAIL SHOPPING OPEN SPACE
BUILDINGS
PROPOSED BUILDING DESIGN



LEGEND:
BUILDINGS
PROPOSED BUILDING DESIGN



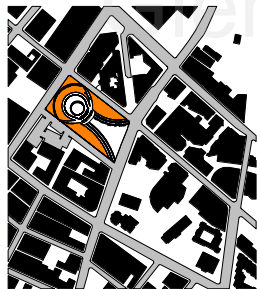
LEGEND:
PEDESTRIAN ACCESS DIAGRAM
BUILDINGS
PROPOSED BUILDING DESIGN



LEGEND:
PROPOSED BUILDING DESIGN



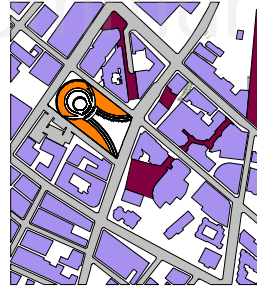
PROPOSED DESIGN DIAGRAMS OF LITTLE TOKYO SITE -



LEGEND:
PROJECT LOCATION



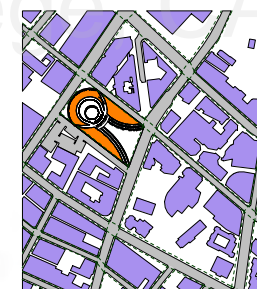
LEGEND:
RETAIL / APARTMENT MIX-USE
APARTMENT
HOTEL
RETAIL
MUSEUM / CIVIC BUILDING
OFFICE BUILDING
PARKING LOT
PARKING STRUCTURE



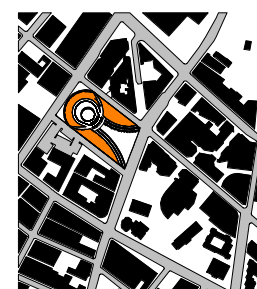
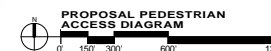
LEGEND:
RETAIL SHOPPING OPEN SPACE
BUILDINGS
PROPOSED BUILDING DESIGN



LEGEND:
BUILDINGS
PROPOSED BUILDING DESIGN



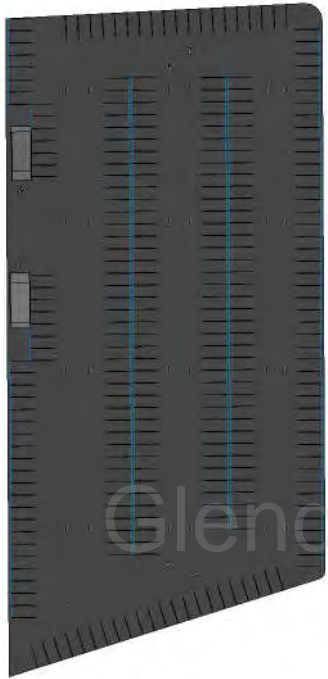
LEGEND:
PEDESTRIAN ACCESS DIAGRAM
BUILDINGS
PROPOSED BUILDING DESIGN



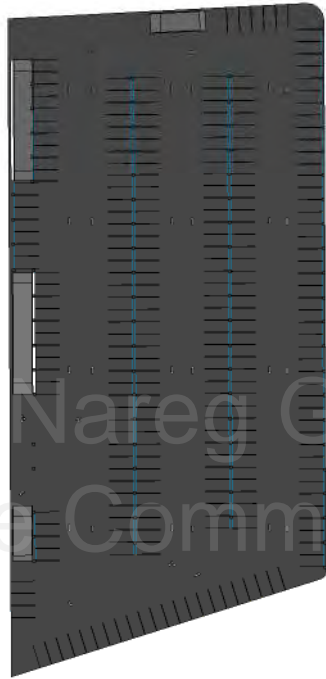
LEGEND:
PROPOSED BUILDING DESIGN



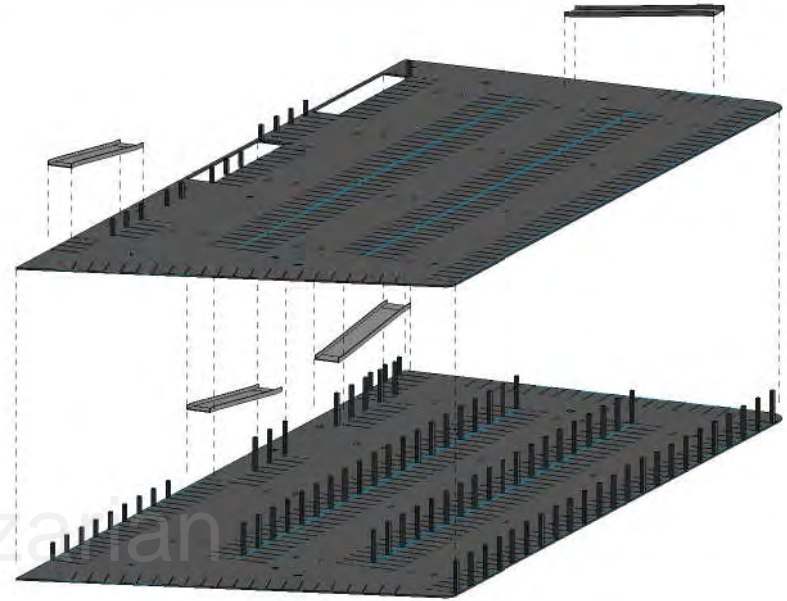
Parking



① Level -2
1" = 40'-0"



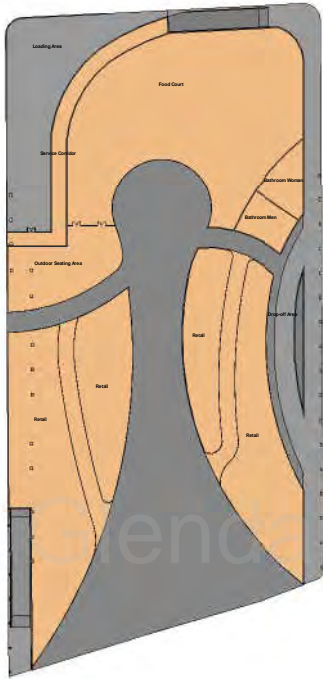
② Level -1
1" = 40'-0"



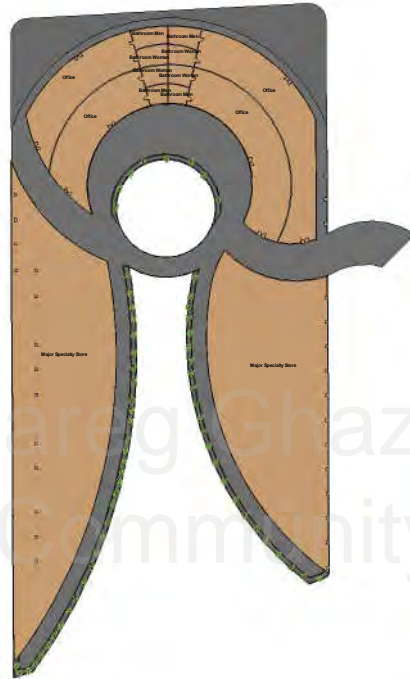
③ Parking Exploded View



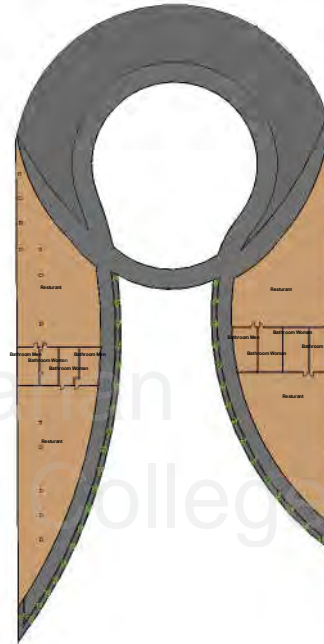
Floor Plans



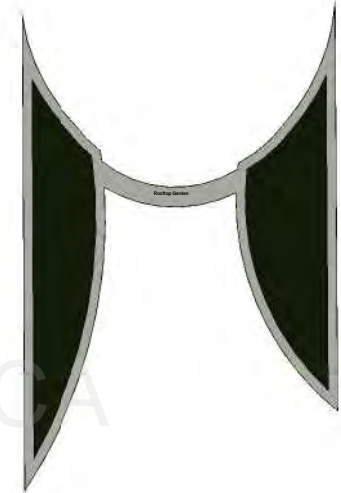
① Level 1
1" = 40'-0"



② Level 2
1" = 40'-0"



③ Level 3
1" = 40'-0"



④ Level 4
1" = 40'-0"



Project Information

Address: 650 South Alvarado Street, Los Angeles, CA



Site Map

For this project we were asked to design a Commercial Mix-Use building. It had to have Retail, Child Daycare Center, Community Center and Apartments. Naturally I placed the retails on the first floor because a lot of people walk past this site daily and not everyone plan on buying something but if they happen to walk past a store and see something they like then they might change their mind and end up buying something.

I placed the child daycare center on the first floor reaching all the way up to the third floor because in case of an emergency it would be easier to evacuate the children versus if we put them on the top floor.

Only half of the third floor belongs to the daycare, the other half is part of the Community Center. The Community Center is placed on 2 levels placing them 50 feet above ground level with a spectacular view of MacArthur Park.

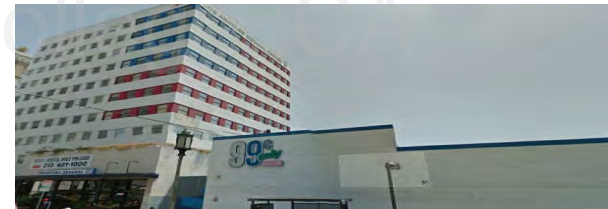
Starting at the fifth floor we have the apartments reaching all the way up to the 9th floor which also happens to be the top floor. This building has a mixture of 1 and 2 bedroom apartments and each level comes with its own balcony on the west side of the building facing MacArthur Park.



Current Site



View of MacArthur Park

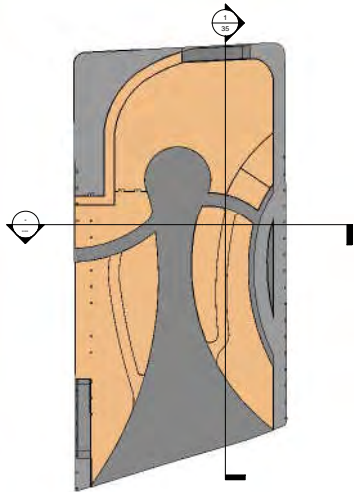


Los Angeles Medical Center



MacArthur Park

Section Cuts



③ Section Cuts
1" = 60'-0"

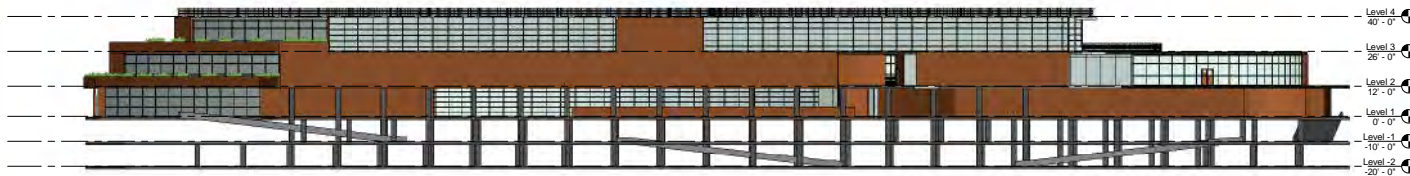
① Section 11
1" = 20'-0"



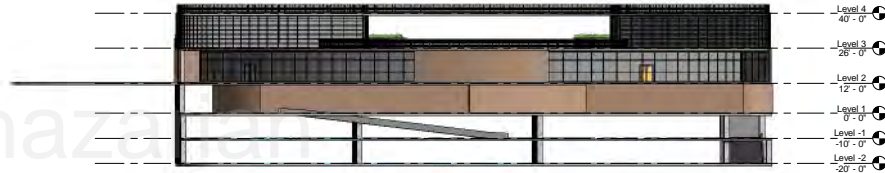
② Section 9
1" = 20'-0"



Elevation



① East
3/64" = 1'-0"



② North
3/64" = 1'-0"



④ West
3/64" = 1'-0"

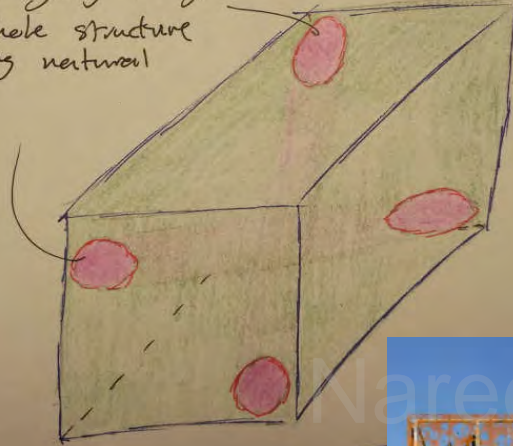


③ South
3/64" = 1'-0"

Nareg Ghazarian
Glendale Community College, CA

Concept

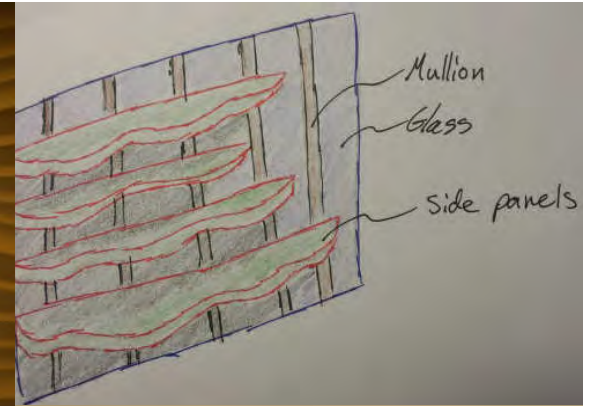
Tunnel going through the whole structure providing natural Light.



The tunnels through the building gives a great view from the outside looking in as well as a great view of the outside from inside the building.

One of the tunnel openings is located right at the parking entrance because a lot of people will pass that point throughout the day. That same tunnel leads to the other side of the building which is right in front the hospital, giving the sick people a nice view as well.

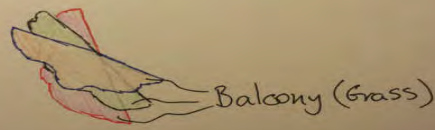
The second tunnel opening is located at the train station connecting point because that point has a lot of traffic as well.



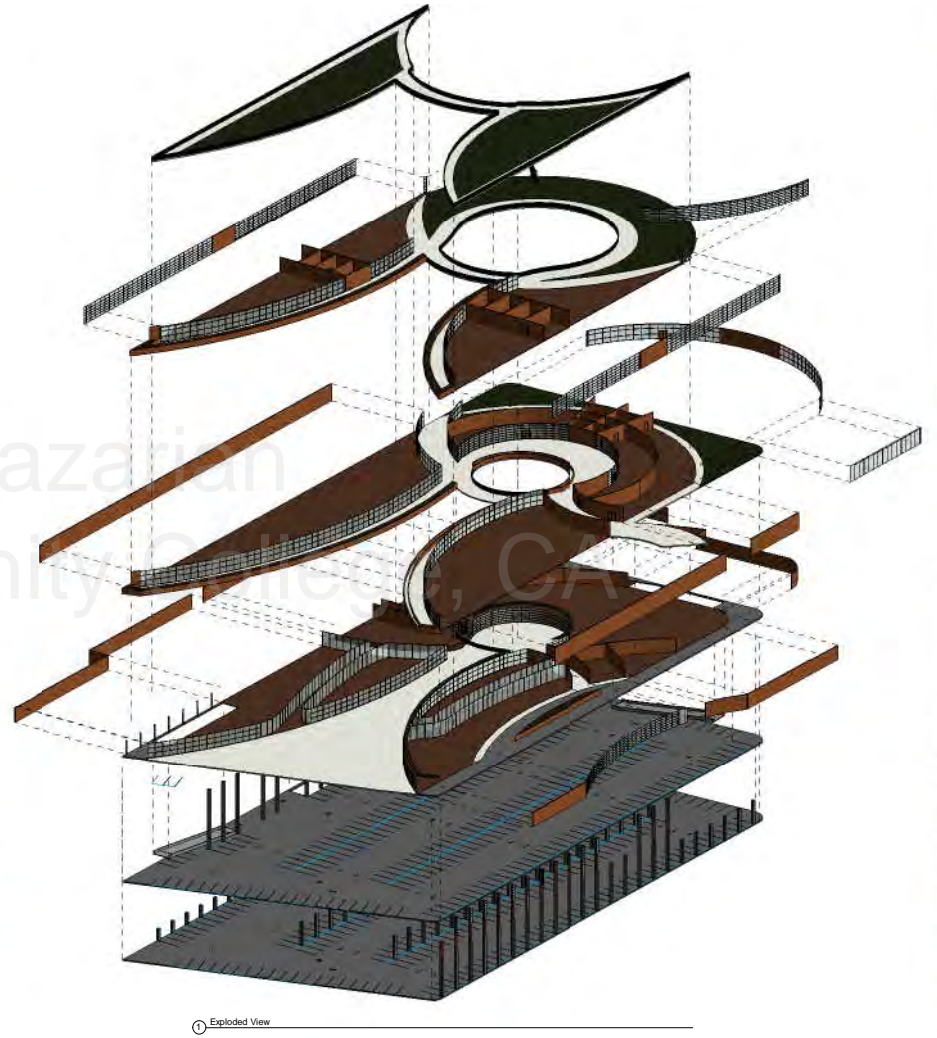
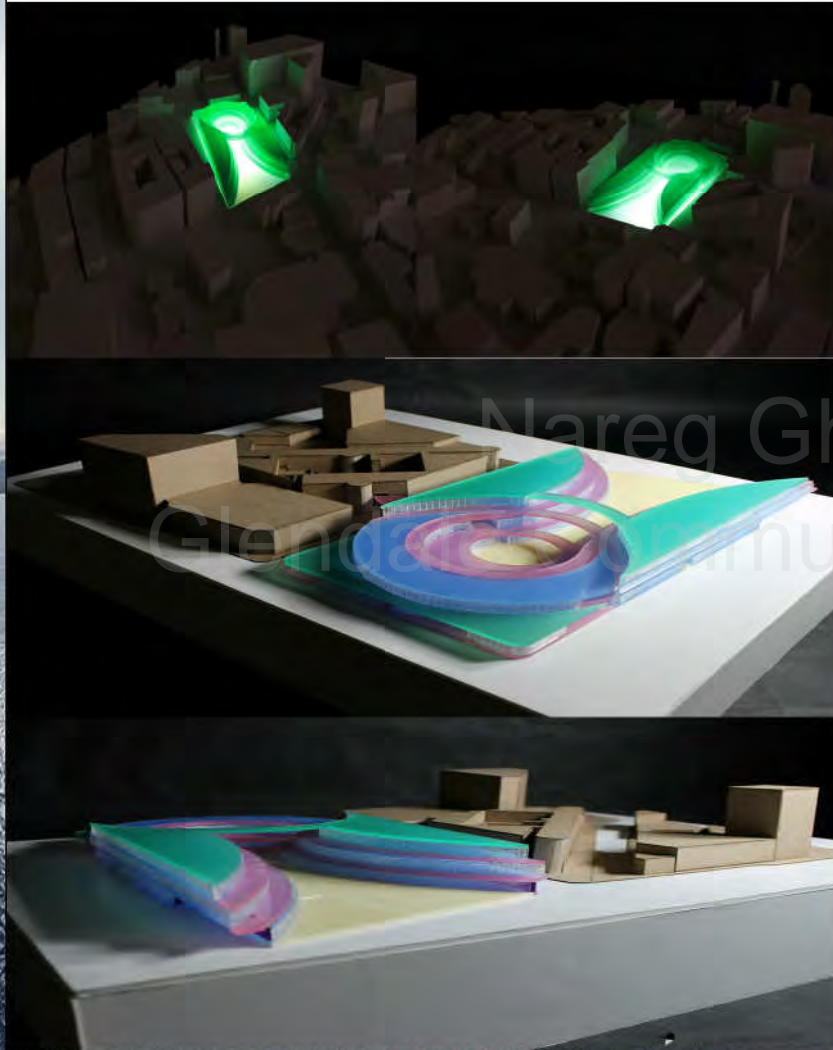
I placed the panels on the exterior walls in order to provide some shade on the building and also to block the view of the inside from the Street.



The balconies on the west side of the building are inspired by chinese rice fields. I used the fields wavy and stacked design so when looking from the top it looks like a rice field.



Exploded View and Model Pictures



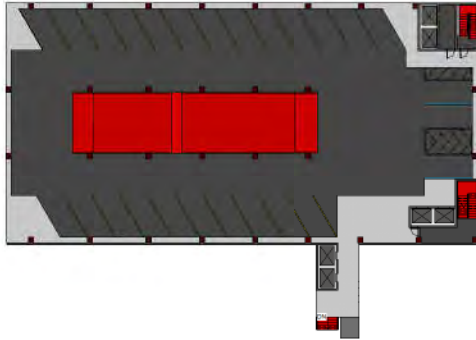
① Exploded View



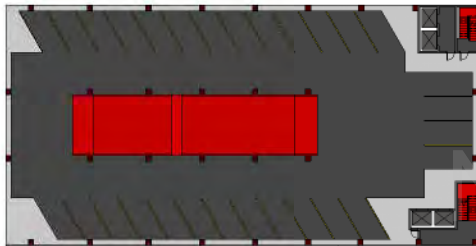
Norah Azarian
Glendale Community College, CA

MACARTHUR PARK

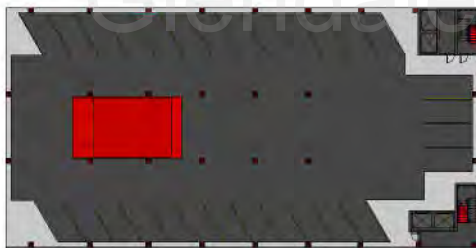
Parking



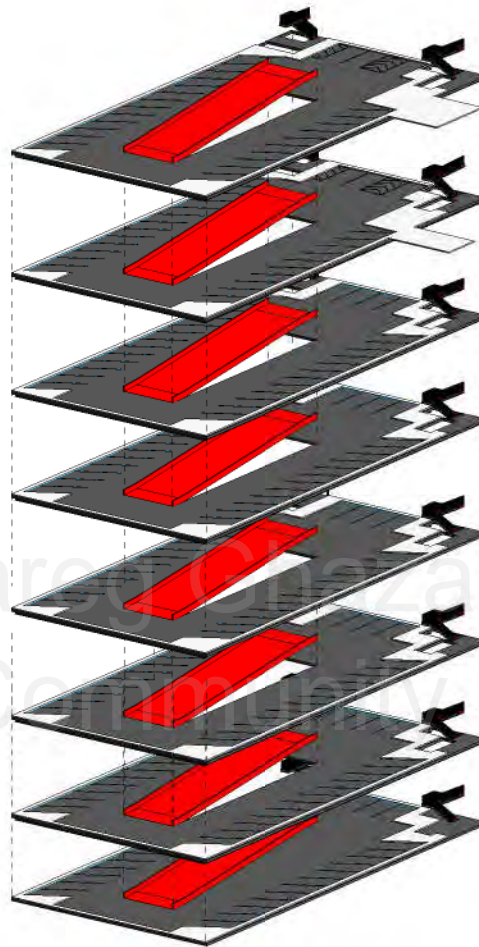
② PARKING LEVEL 2
1" = 20'-0"



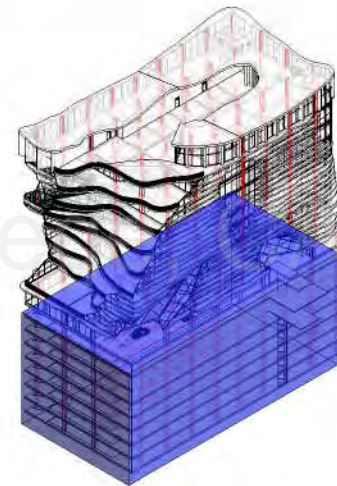
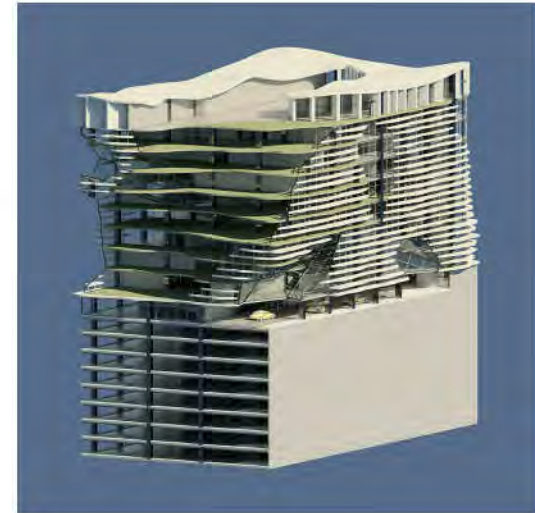
③ Typical Parking
1" = 20'-0"



④ PARKING LEVEL 8
1" = 20'-0"

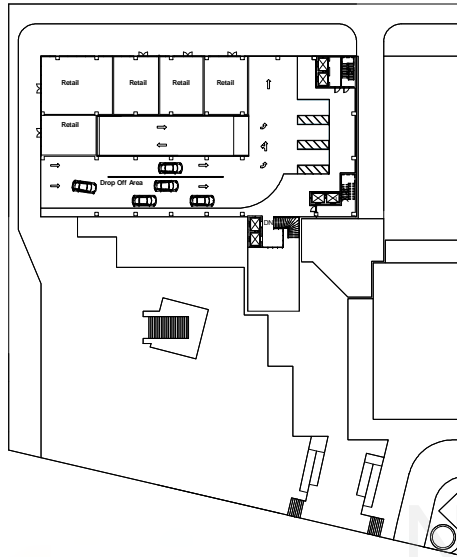


⑤ Parking Exploded

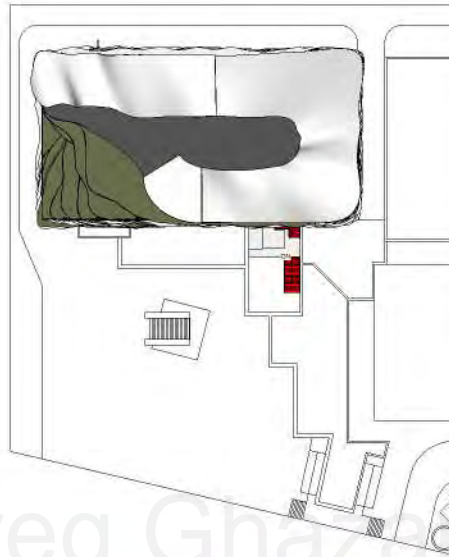


⑥ Parking

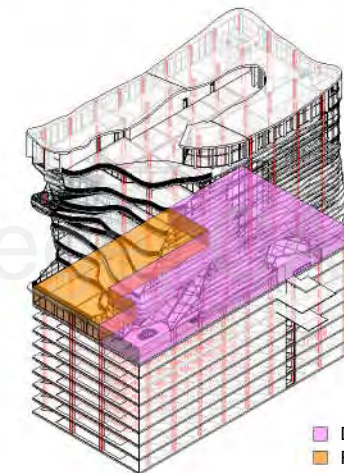
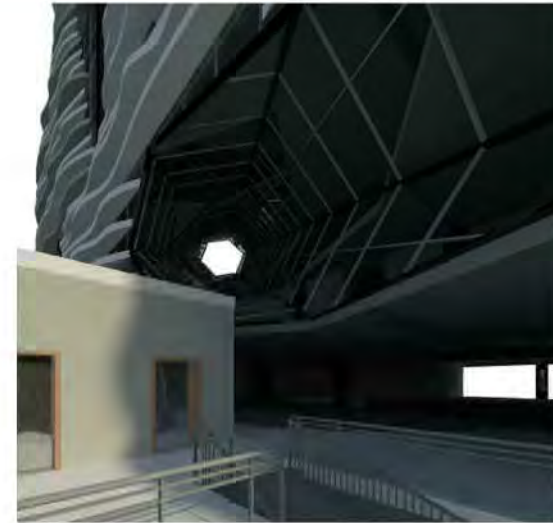
Ground Floor



① GROUND LEVEL
1" = 30'-0"



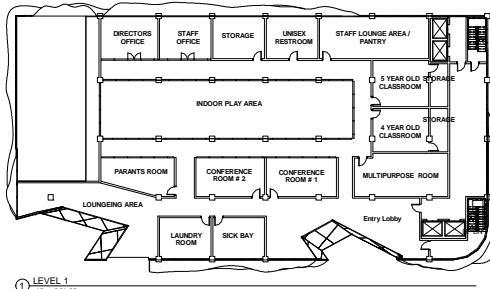
② Site
1" = 30'-0"



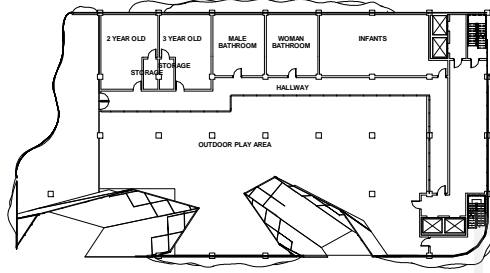
③ Retail and Drop Off Area

Drop Off Area
Retail

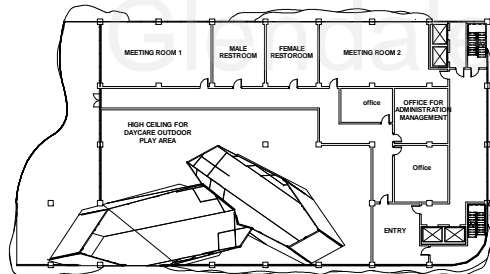
Child Daycare Center



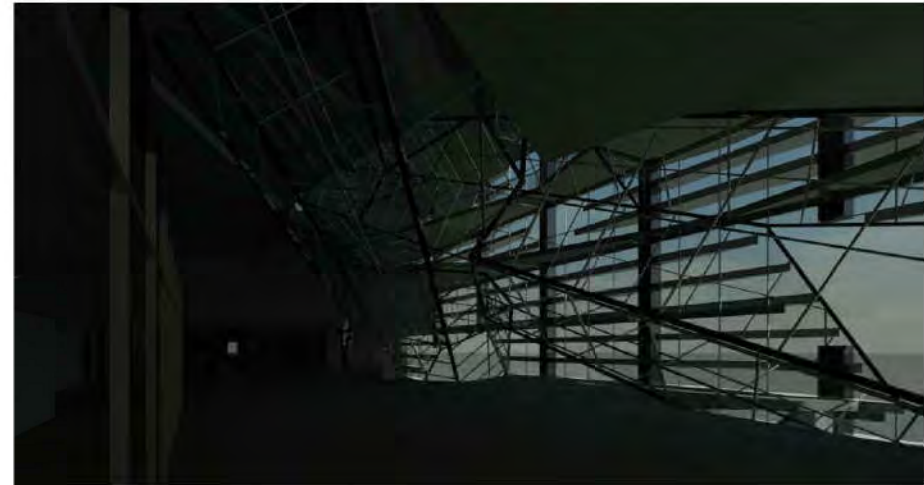
① LEVEL 1
1" = 20'-0"



② LEVEL 2
1" = 20'-0"



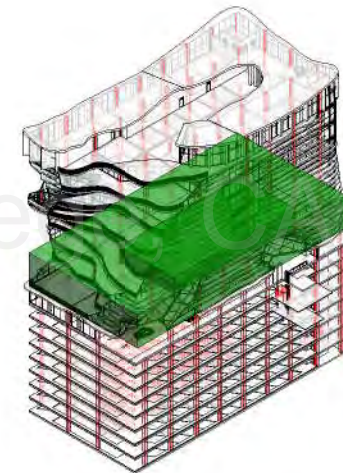
③ LEVEL 3
1" = 20'-0"



Daycare Center Outdoor Play Area

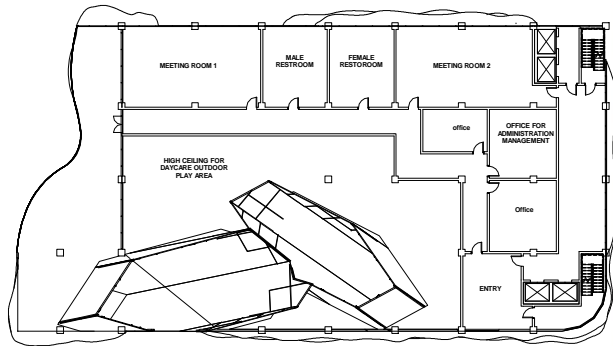
For the Daycare Center I decided to use a lot of glass walls mainly to give the grownups a good view over the kids at all times. For the first level I placed the indoor play area right in the middle and placed all the offices and class rooms around it, again I did this in order to make it easier to keep an eye on the children. For the second floor I did not make the walls out of glass because I placed the outdoor play area there. Children playing can get pretty loud so I made two walls separating the play area and the classrooms in order to keep the sound contained because the younger children take naps throughout the day and I wouldn't want the sound to wake them up.

There isn't really anything on the third floor connected to the daycare center it's just that the play area on the second floor has a 20 foot ceiling reaching up to the third floor.

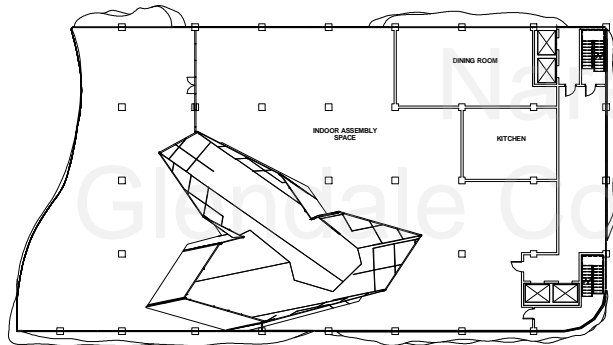


© Daycare Center

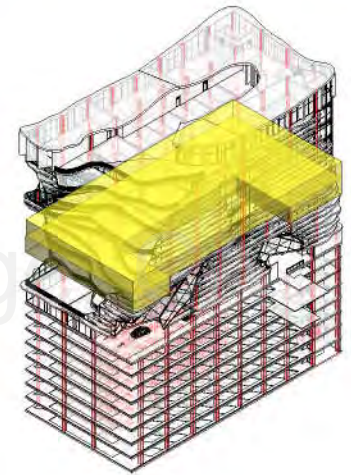
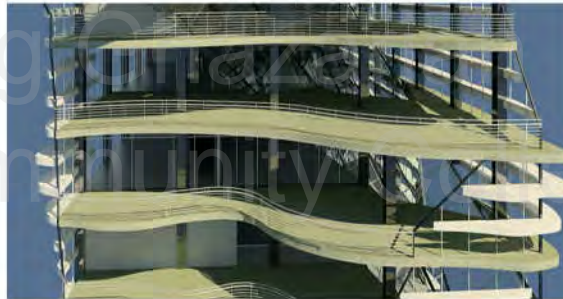
Community Center



LEVEL 3
1/16" = 1'-0"

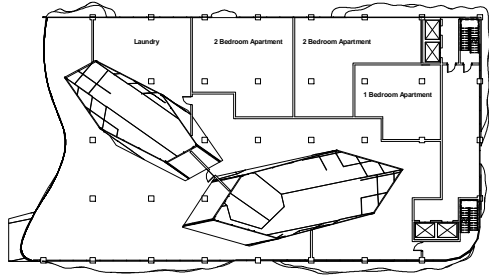


LEVEL 4
1/16" = 1'-0"

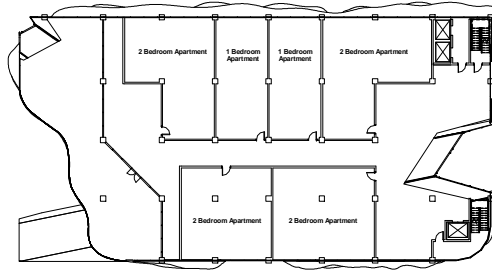


Community Center

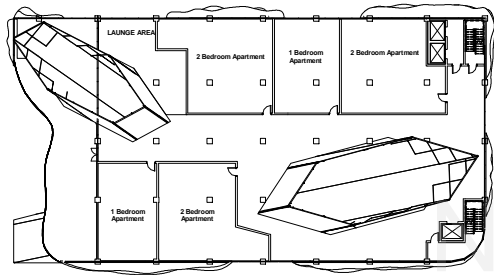
Apartments



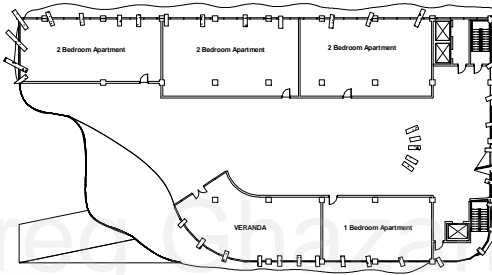
① LEVEL 5
1" = 20'-0"



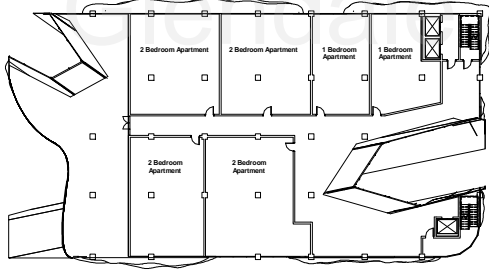
④ LEVEL 8
1" = 20'-0"



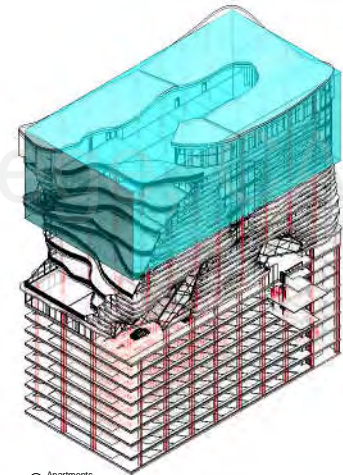
② LEVEL 6
1" = 20'-0"



③ LEVEL 9
1" = 20'-0"

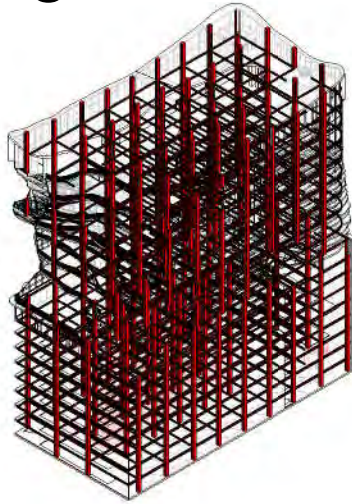


⑤ LEVEL 7
1" = 20'-0"

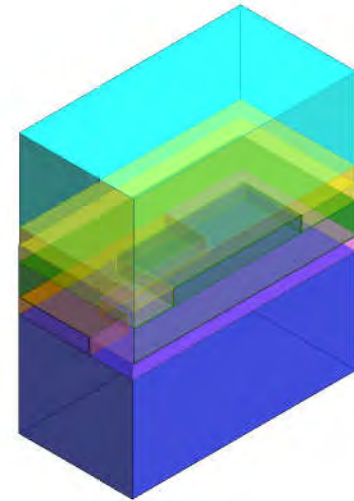


⑦ Apartments

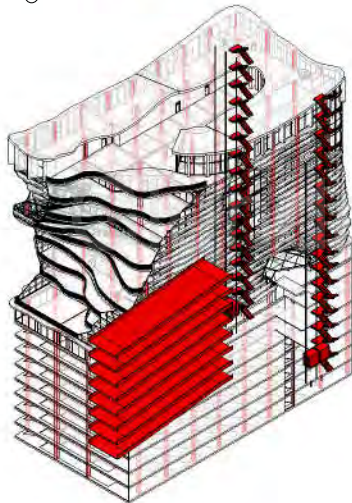
Diagrams



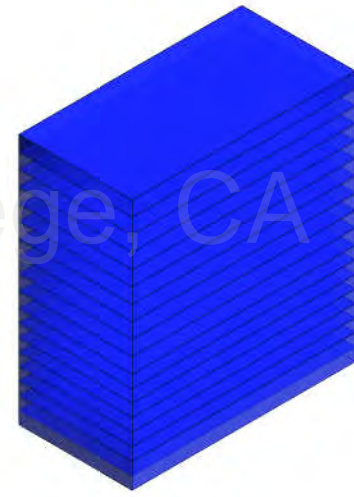
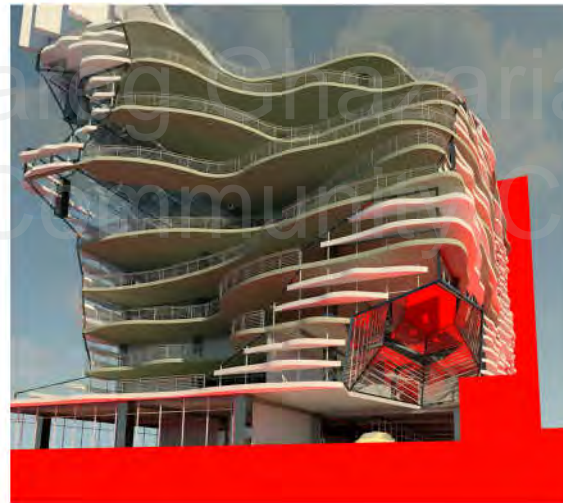
③ Structure Diagram



④ Program Diagram

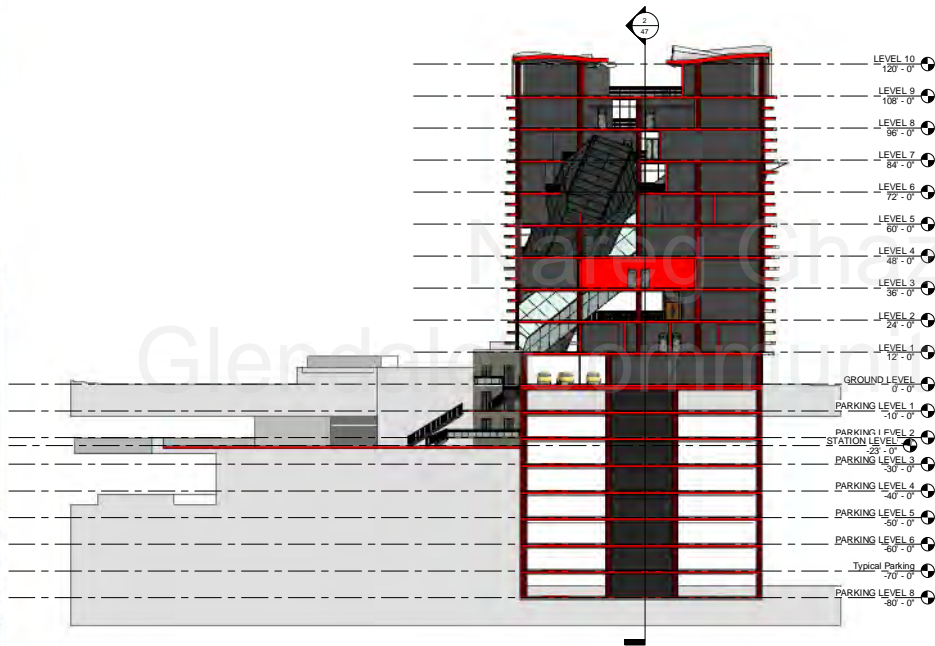


⑤ Circulation Diagram

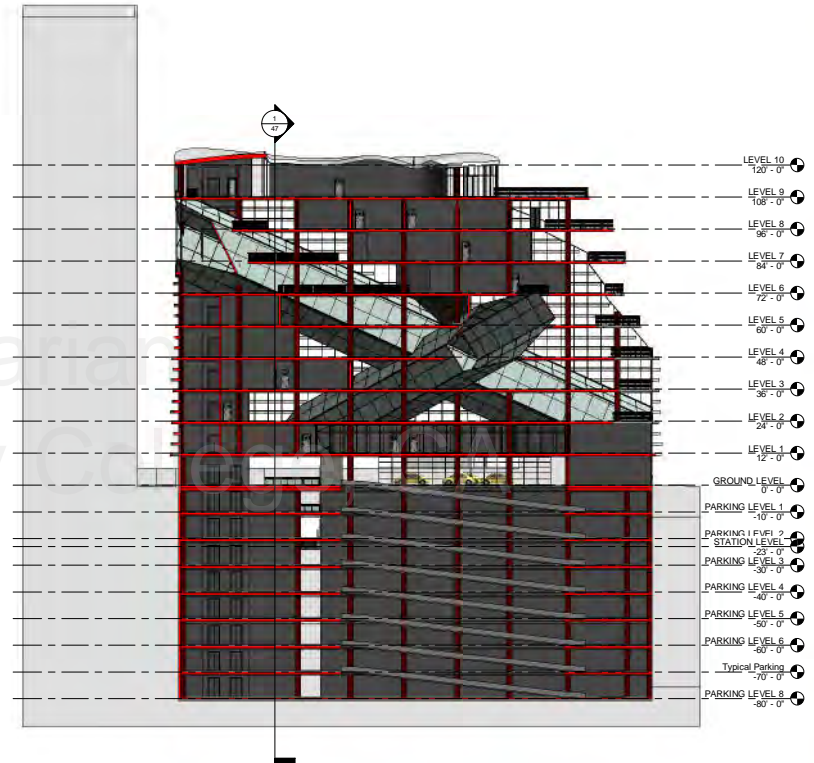


⑥ Parti Diagram

Section Cuts

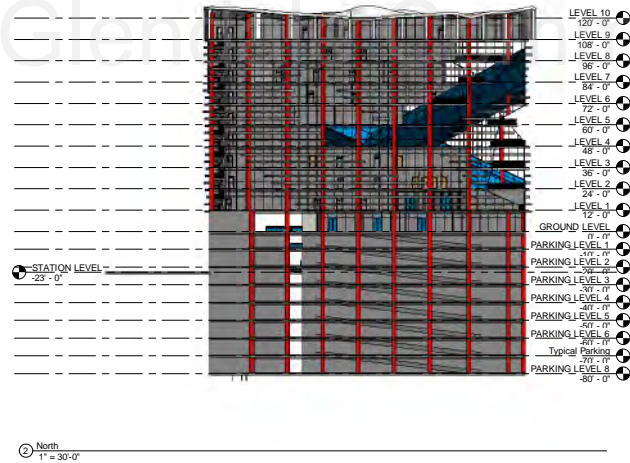
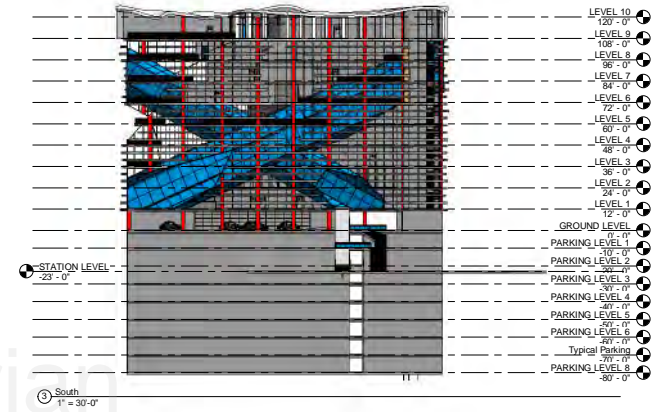
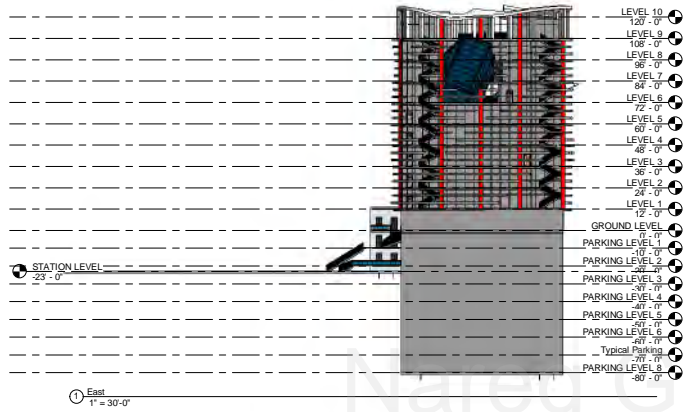


① Section 1
1" = 20'-0"

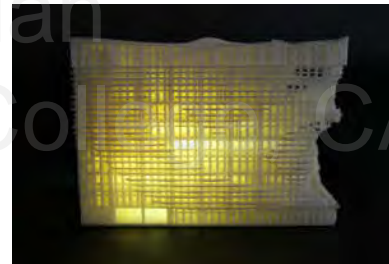
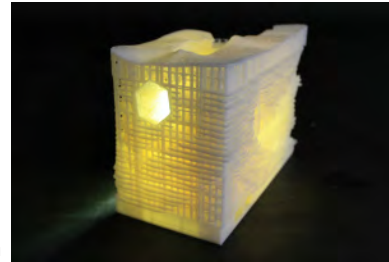


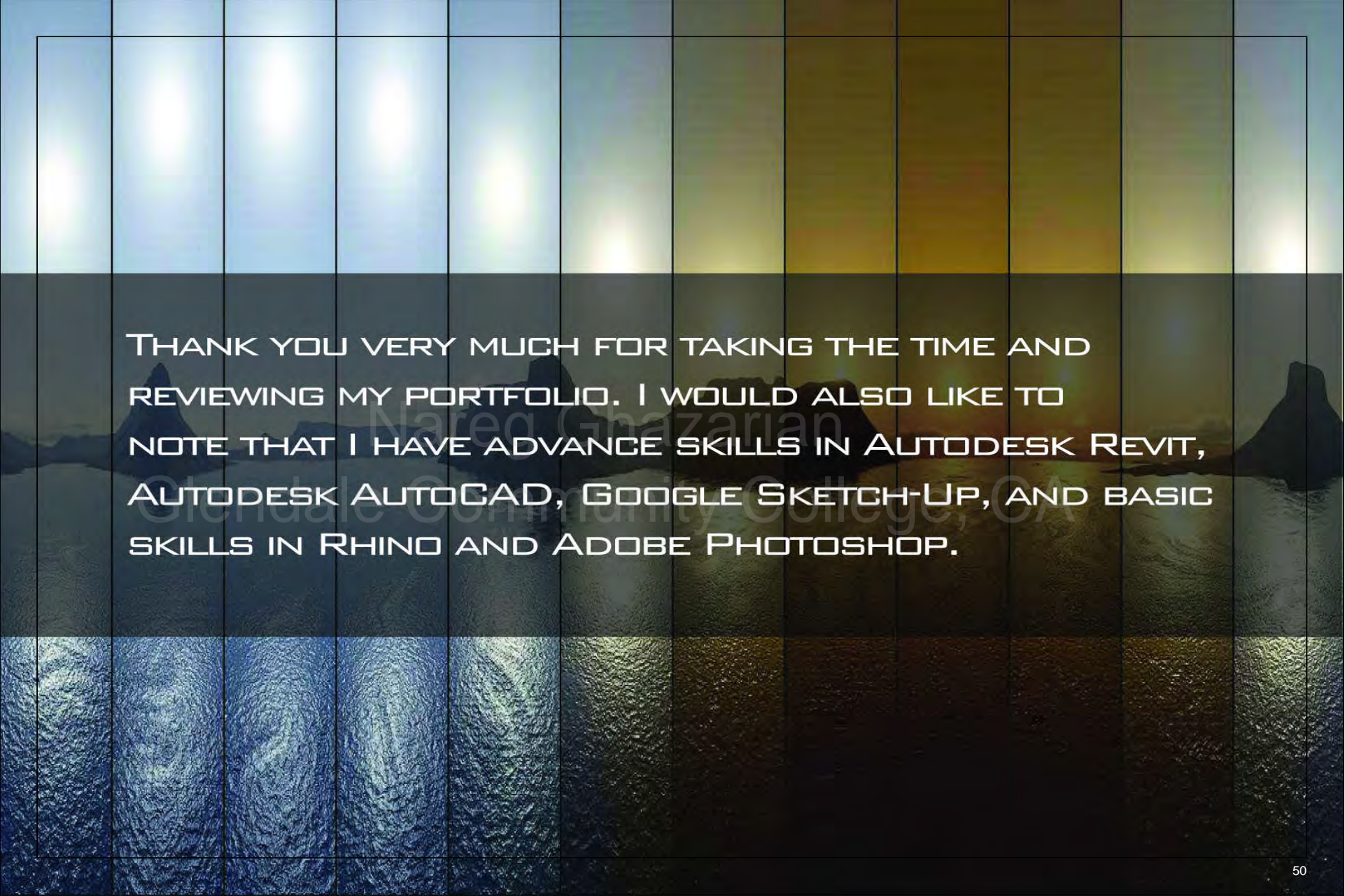
② Section 2
1" = 20'-0"

Elevation



Renderings and Model Pictures





THANK YOU VERY MUCH FOR TAKING THE TIME AND
REVIEWING MY PORTFOLIO. I WOULD ALSO LIKE TO
NOTE THAT I HAVE ADVANCE SKILLS IN AUTODESK REVIT,
AUTODESK AUTOCAD, GOOGLE SKETCH-UP, AND BASIC
SKILLS IN RHINO AND ADOBE PHOTOSHOP.