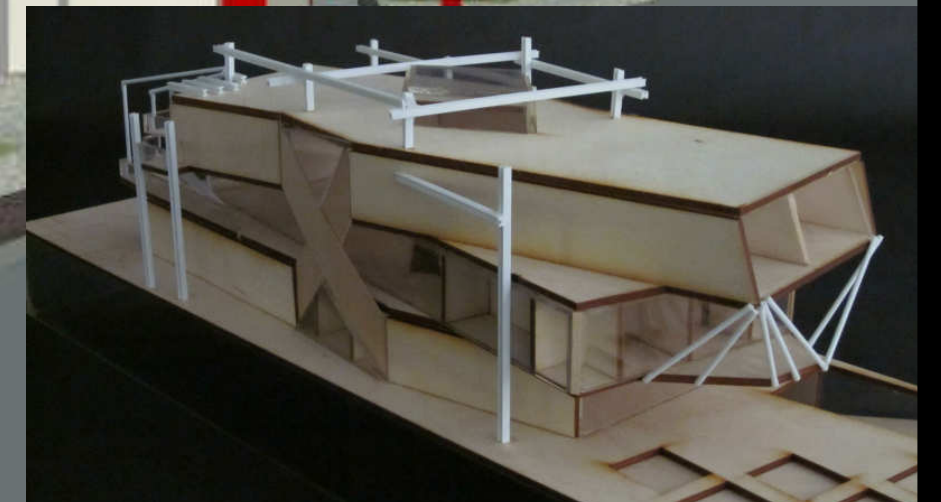


Arvin Shirinyans
2010-2011 year



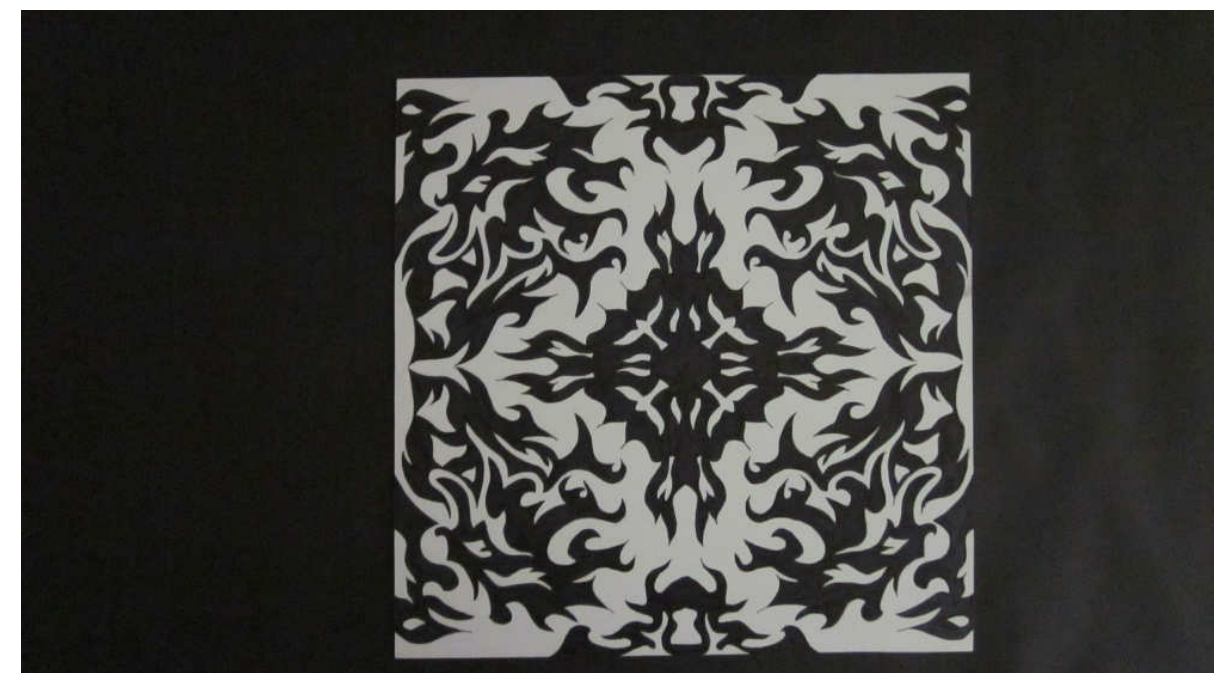
Content

The Magician House(Design House).....2

The Schroder House(Case Study House).....12

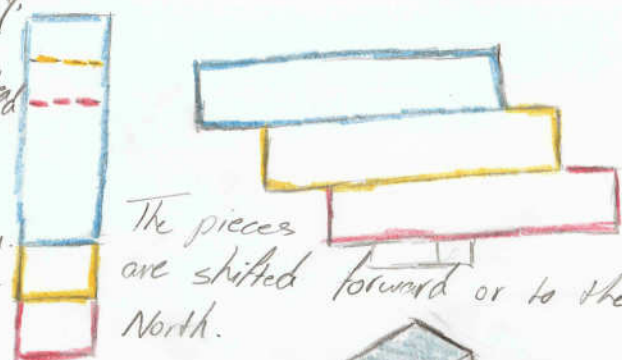
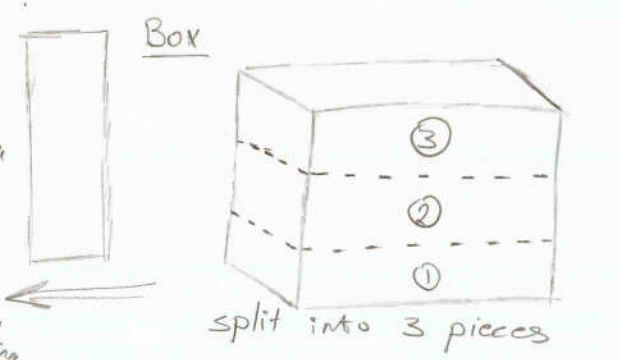
Art Work(Paintings, Drawings, Patterns).....16

ASEA Club(Design Village Competition 2011, Cal Poly, San Luis Obispo).....21

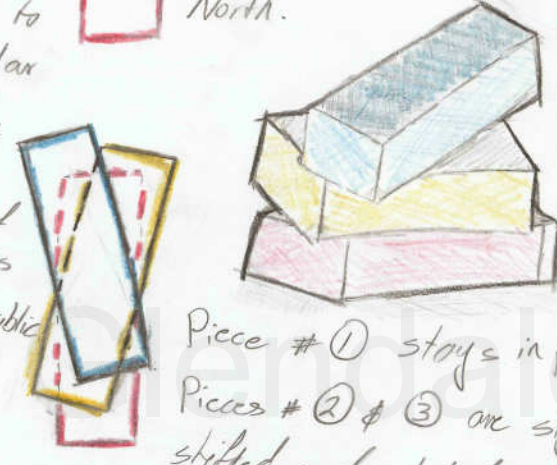


Magician House

*I'm Designing a house for a magician. The words split, shift, rotate, switch, swap, ... are hidden in the word magic. Magicians use shifting, rotating and swapping in order to create illusions and mislead or misdirect the audience. I used some of these characteristics in my design. Due to the shape of our given site I decided to start from a Rectangular box. Then by splitting the box into 3 pieces I made the 3 stories of the house which helps separating private and public spaces.



The pieces are shifted forward or to the North.



Piece # ① stays in place
Pieces # ② & ③ are slightly shifted and rotated outward in order to give the structure the magician & illusion theme.



FLOATING



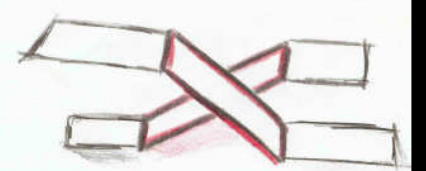
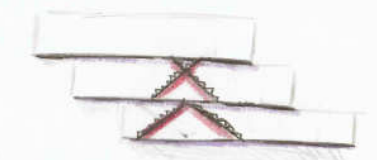
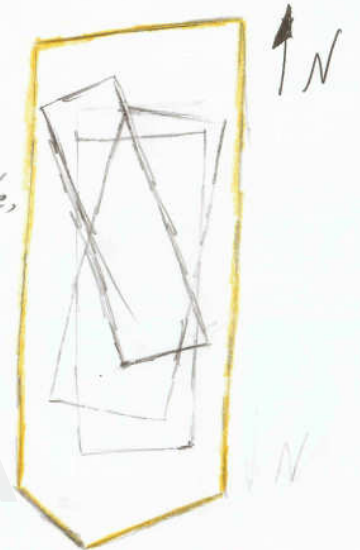
ROTATION, SHIFTING



The site is facing a hill to the south so on the second step the pieces are shifted forward in order to make patios on the 2nd & 3rd floor facing the hillside, which also makes a high ceiling entrance on the North side of the house.

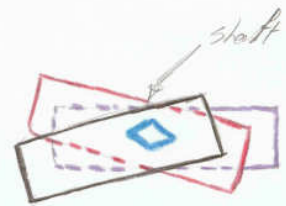
On the next step I rotated the upper floors to have different planes and surfaces intersecting with each other, creating different illusions on each side of the house, and by having parts of the building float and surfaces intersecting in different planes I used the characteristics of a magician and his/her work.

Magic is about unknowns and we could name an unknown as "X" so I chose to have the shape of X in my design such as the circulation right in the middle of a shaft in center of the house, and the connecting walls between first & third floor shaped as Xs.

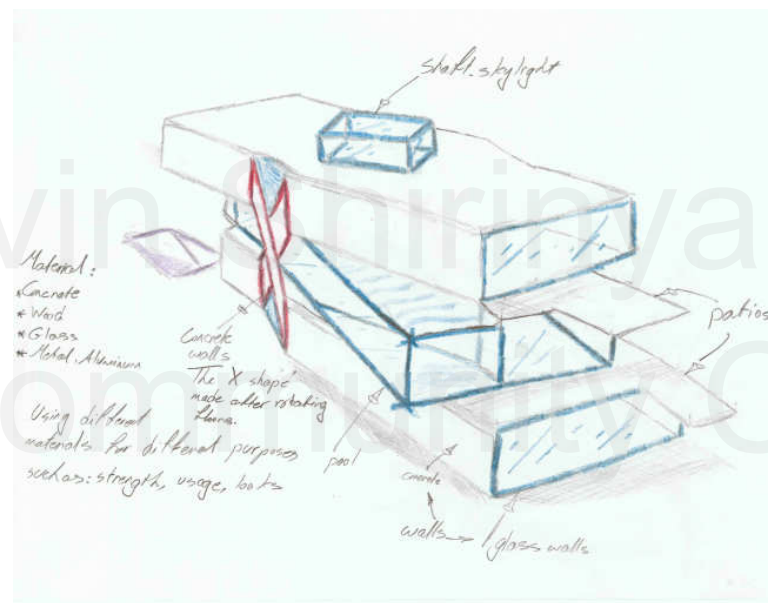
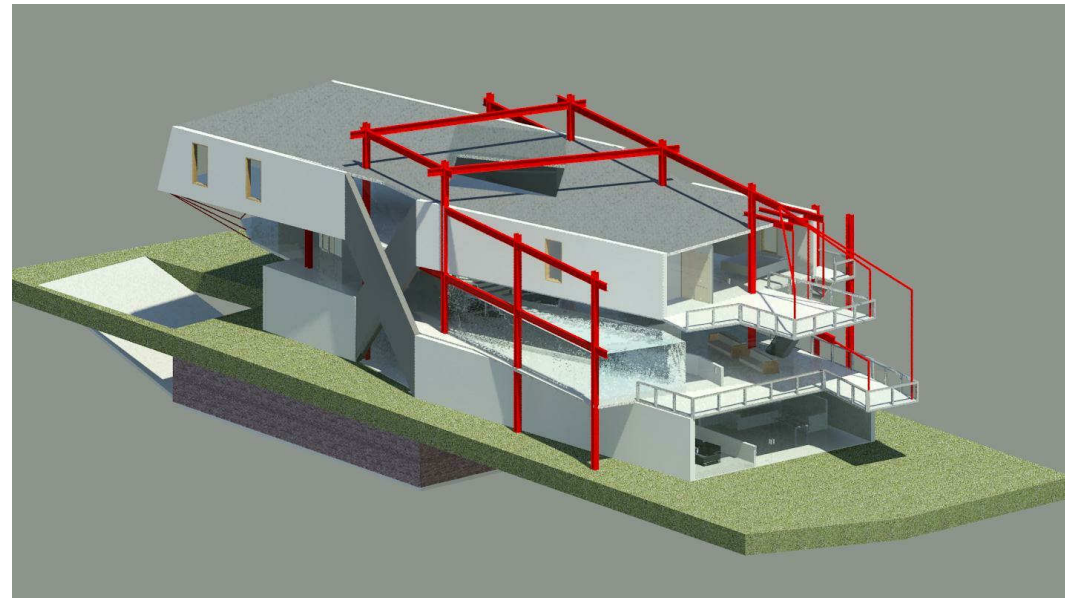
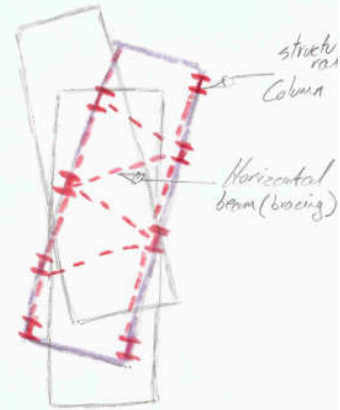


The site is located at 108 E Palmer Ave Glendale, CA. I had to choose an artist as my client for the house I'm designing, and I chose a MAGICIAN. A magician's work includes lots of illusions, floating, shifting, rotating, and switching. I used these characteristics of a magician in designing the magician house. I got the idea of shifting different levels, and rotating them from one of a magician's toys, a deck of cards. The area of the lot I'm designing this house on is 9,082 SQ FT. But after following the city codes and regulations and subtracting the 8' setback from every side, and a 25' setback from the front of the lot, 3,486 SQ FT is the actual area I can use to design the magician house.

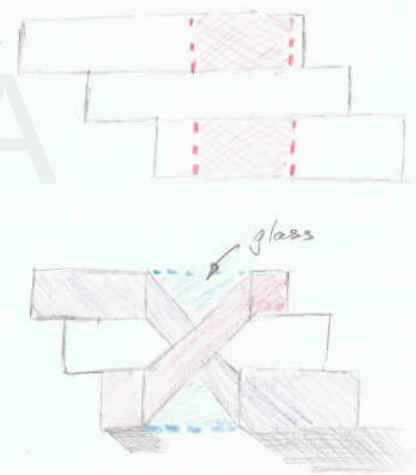
After the levels are rotated I connected all 3 levels. By making a shaft in the center of rotation. The shaft goes from level 1 all the way through level 3, which creates a diamond shape skylight that will allow the sunlight to come in & spread on all 3 levels, bringing natural light in.



In order to help keep the structure up I insert a set of structural columns in the same plane as 2nd floor. I chose 2nd floor because the walls are glass & it's the weakest part of the structure. The columns are also connected with each other with a set of horizontal beams which adds more strength by dividing the weight equally among them.



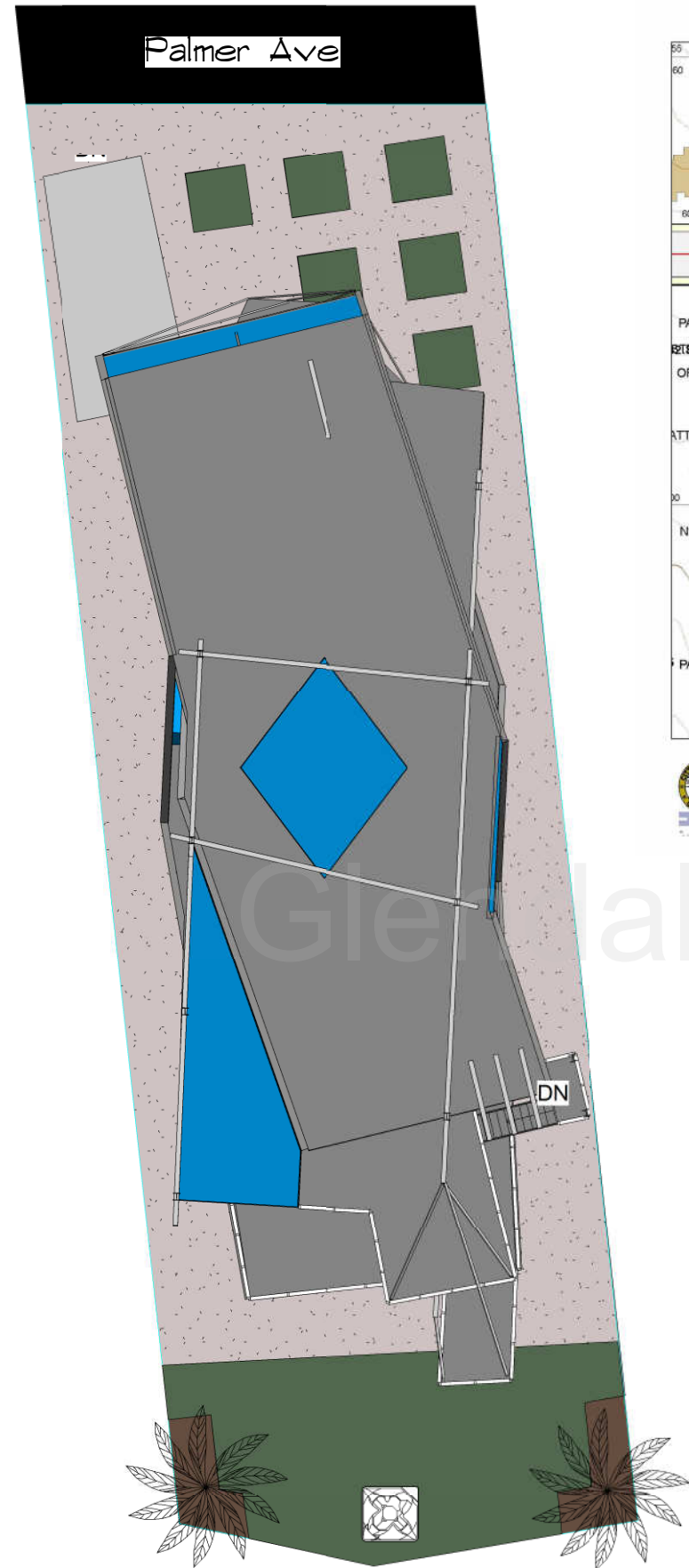
On the east & west side of the house the "X" shape is added. By doing that I connected the 1st & 3rd floor walls together by making them continuous. When the X is placed in the same plane as 2nd floor, it gives the illusion of 1st & 3rd floor walls switching places.



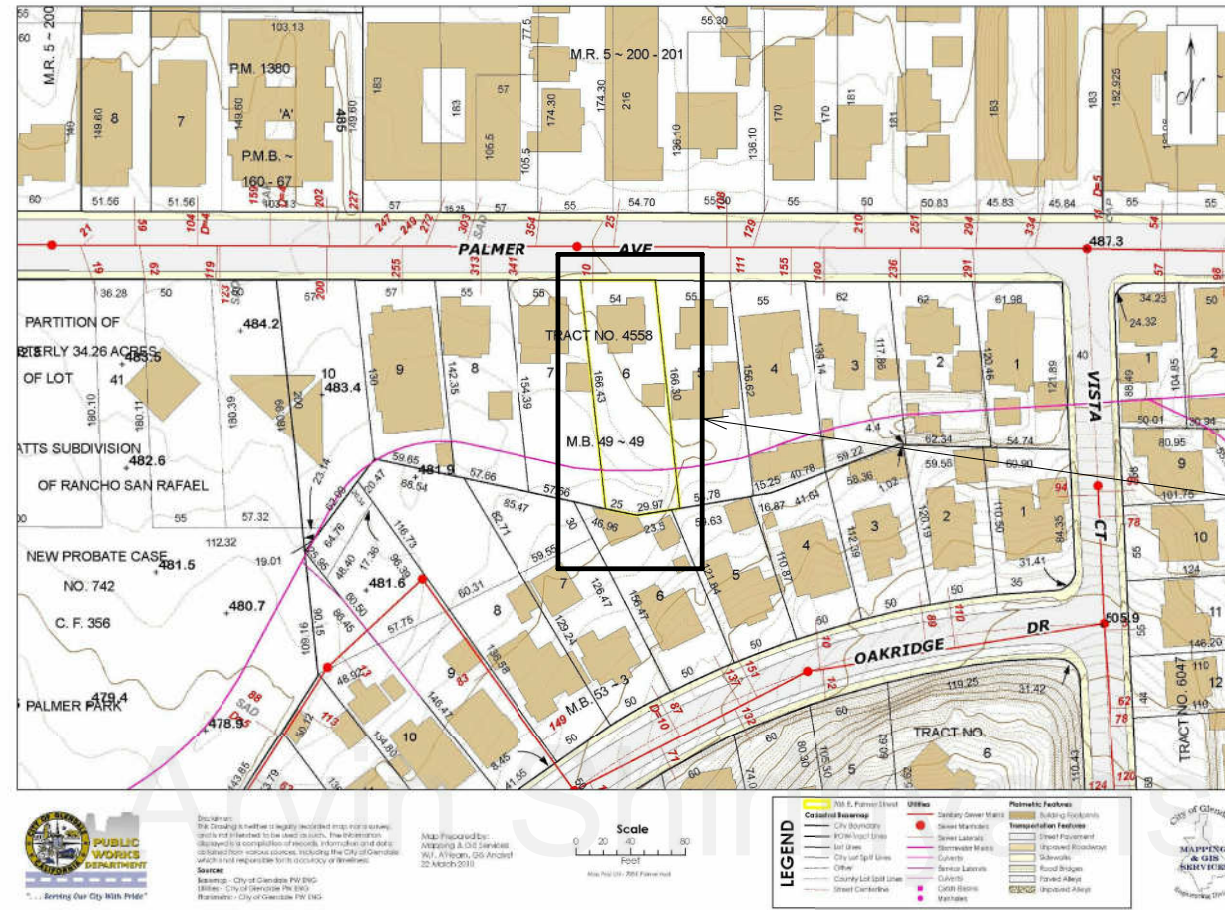
I designed a pool on the second floor, and due to the levels being rotated, it gives the pool a floating look. If you look at the house from the east elevation and there is someone walking on 3rd floor's patio, it will give the illusion of that person walking on water since the pool is sticking out on the corner of the building.



708 E. PALMER AVENUE - GLENDALE, CA



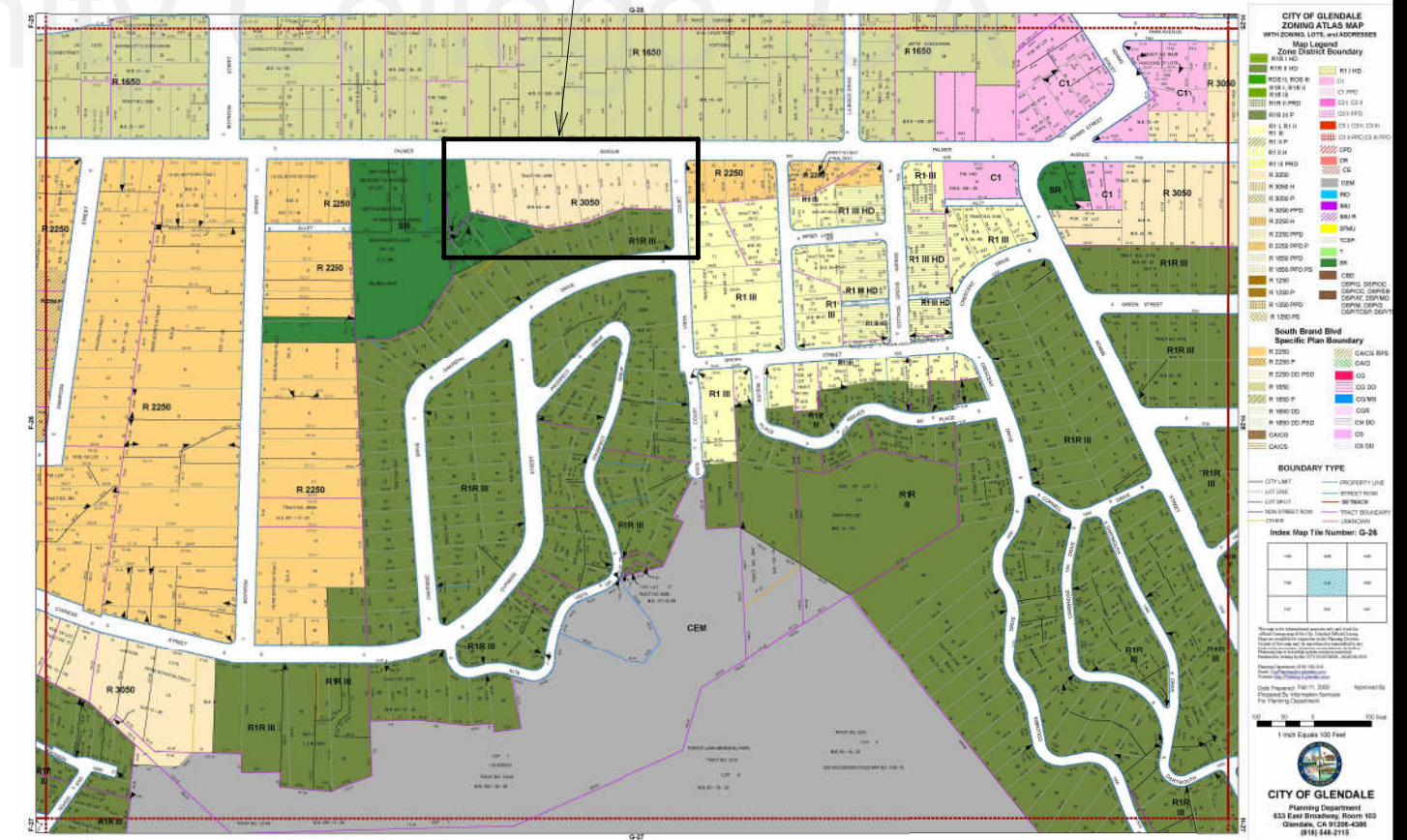
1 SITE PLAN
1" = 20'-0"



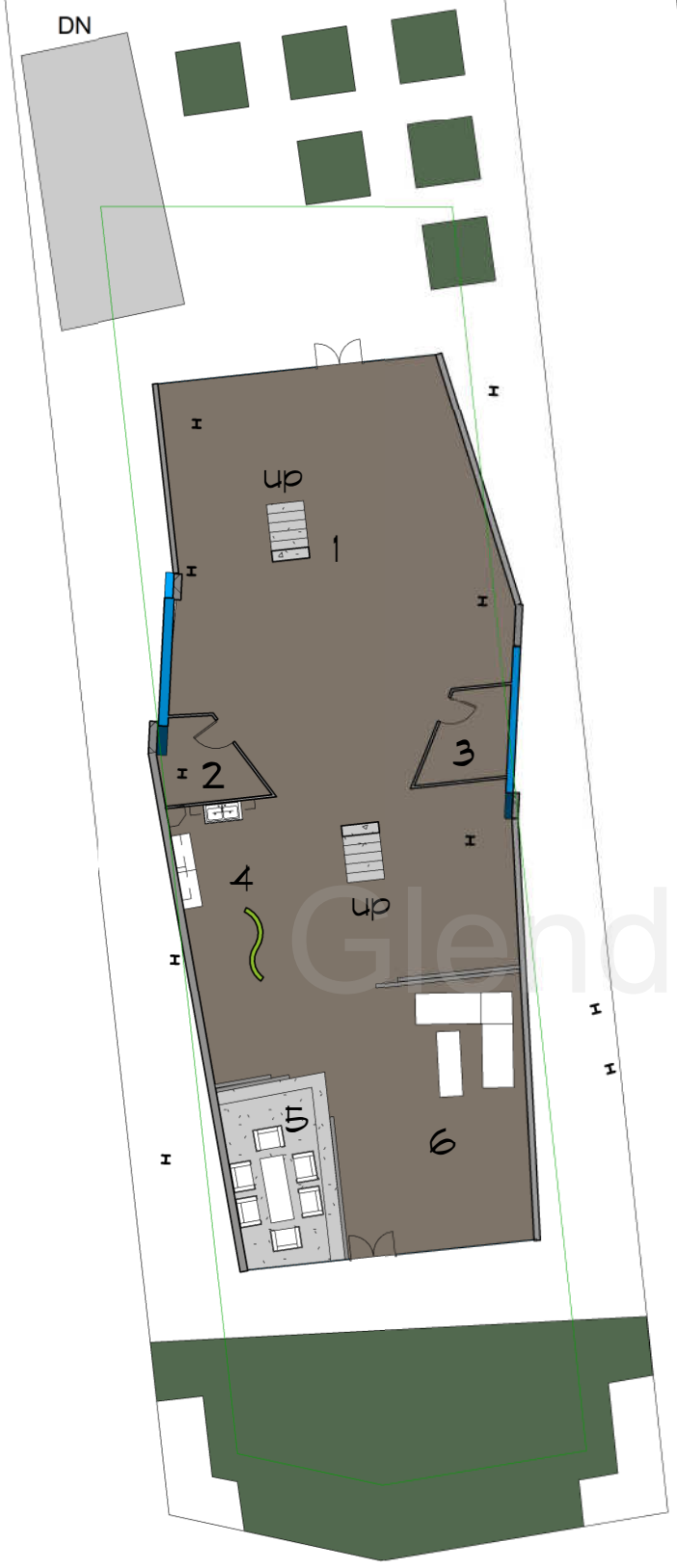
I have studied the site so i can make my design match the geographical location of the site.

Site Location

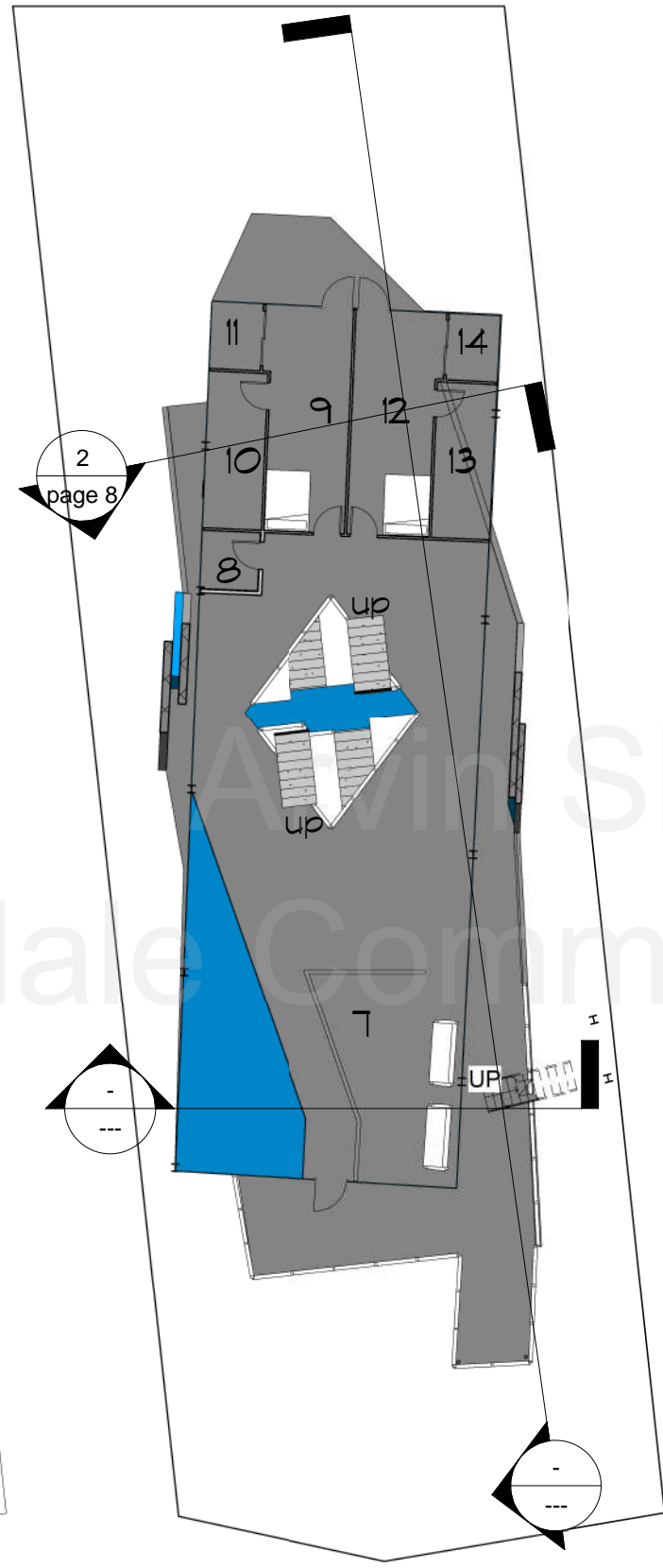
Site



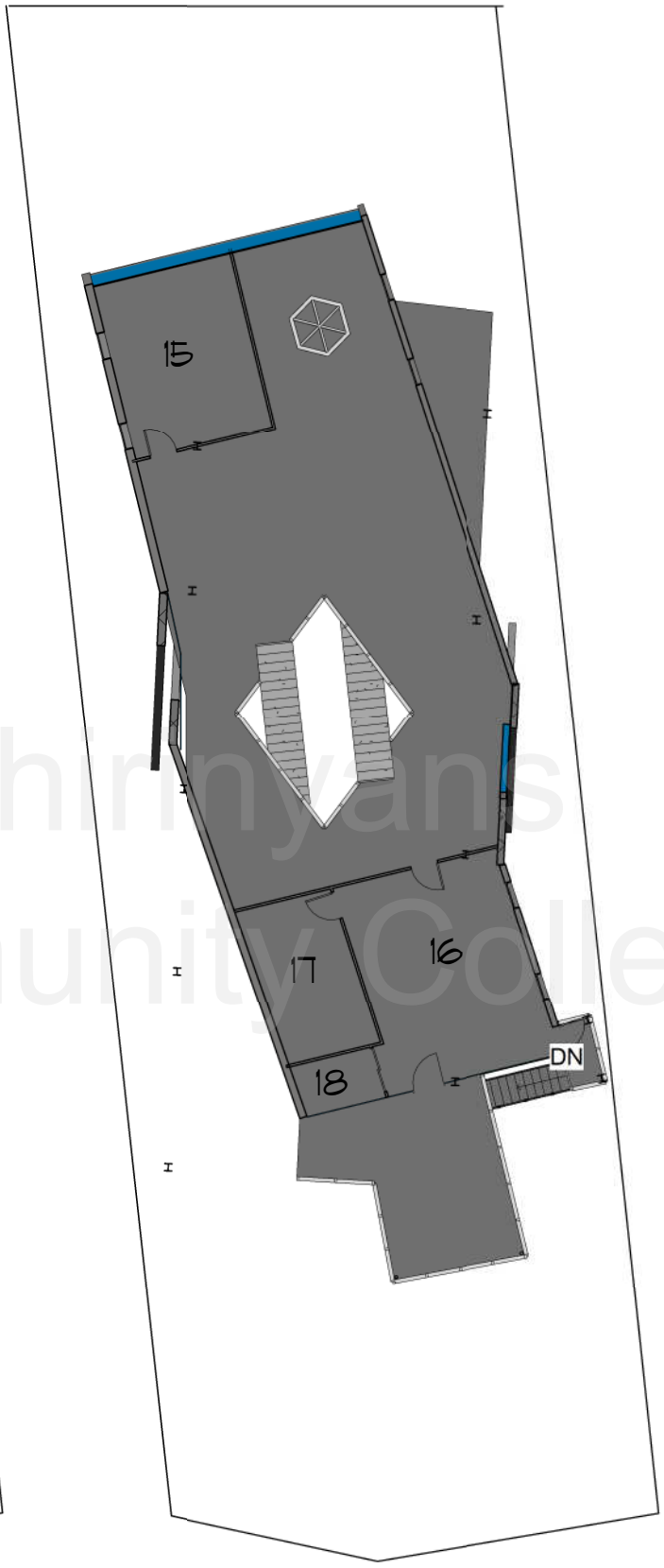
Palmer Ave



① 1st Floor
1" = 20'-0"

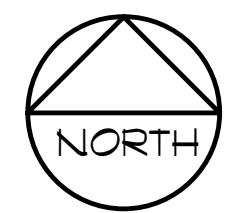


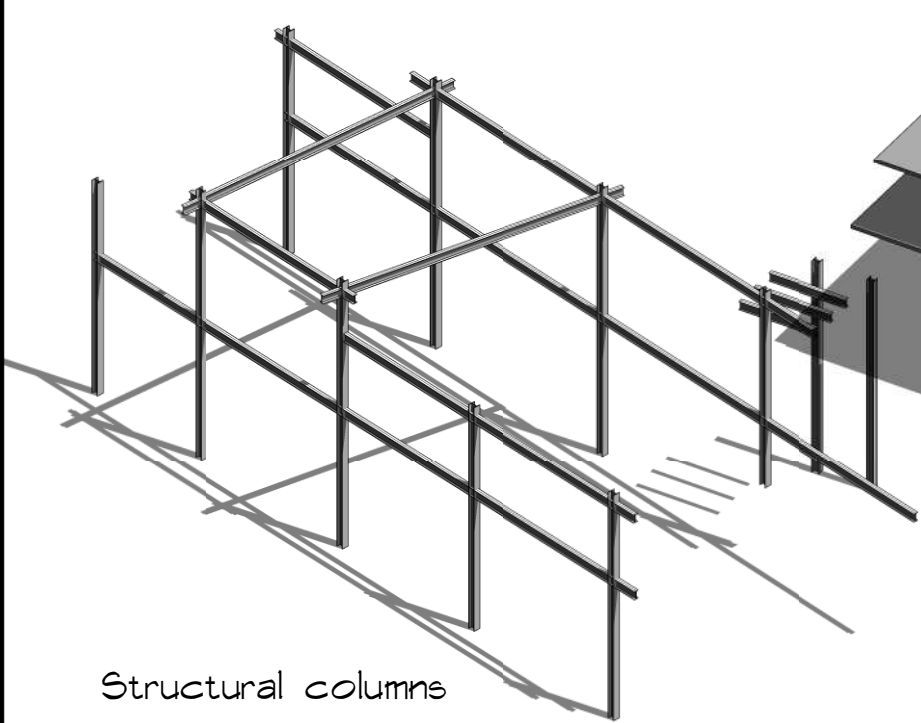
② 2nd Floor
1" = 20'-0"



③ 3rd Floor
1" = 20'-0"

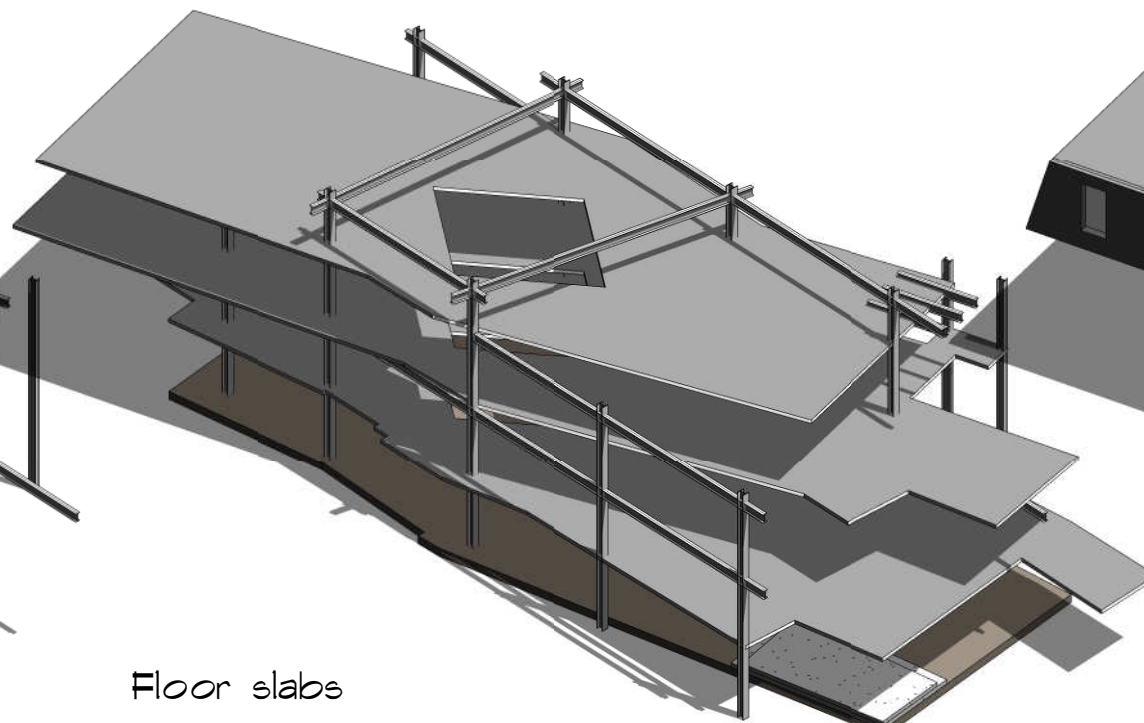
- FLOOR PLANS
- 1.ENTRY/ FOYER
 - 2.STOTAGE
 - 3.POWDER ROOM
 - 4.KITCHEN
 - 5.DINING ROOM
 - 6.LIVING ROOM
 - 7.FAMILY ROOM
 - 8.LAUNDRY ROOM
 - 9.BEDROOM #1
 - 10.BATHROOM #1
 - 11.WALK IN CLOSET #1
 - 12.BEDROOM #2
 - 13.BATHROOM #2
 - 14.WALK IN CLOSET #2
 - 15.HOME OFFICE/STUDIO
 - 16.MASTER BEDROOM
 - 17.MASTER BATHROOM
 - 18.MASTER WALK IN CLOSET





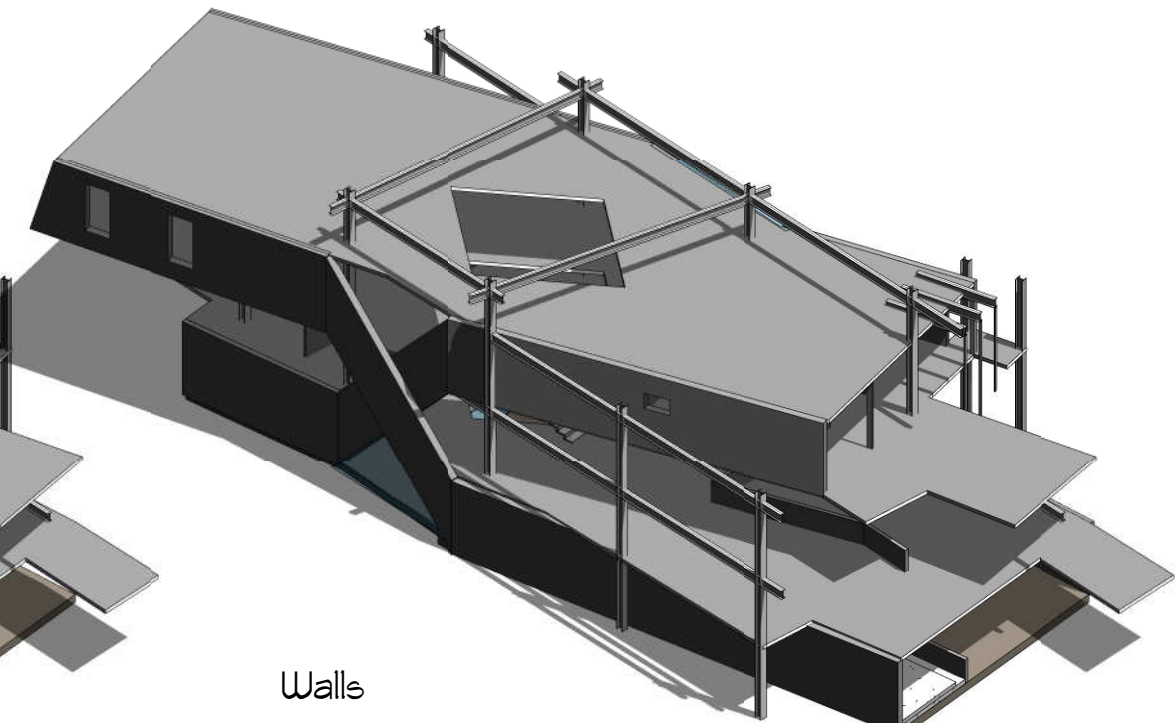
Structural columns

① 1



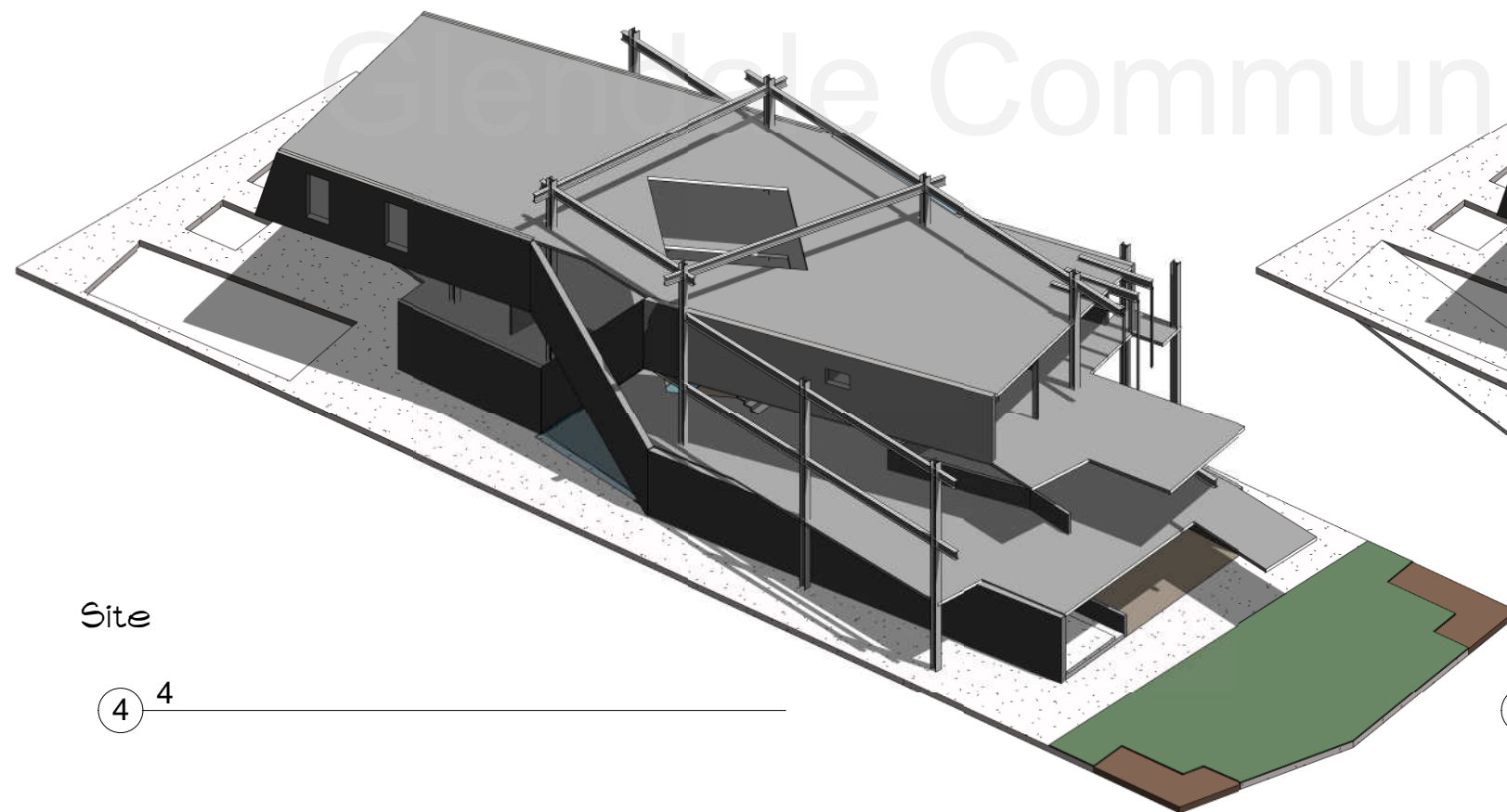
Floor slabs

② 2



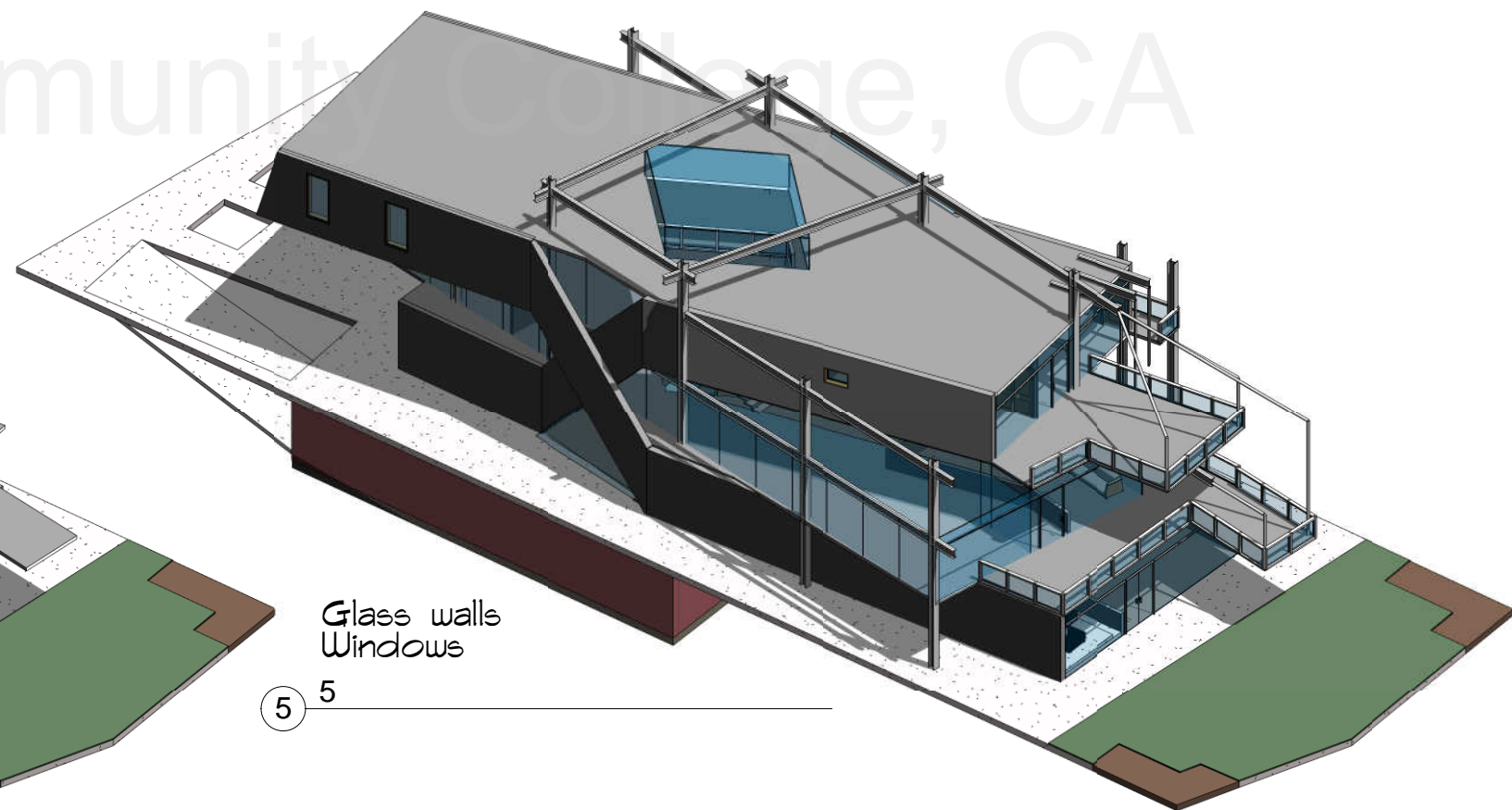
Walls

③ 3



Site

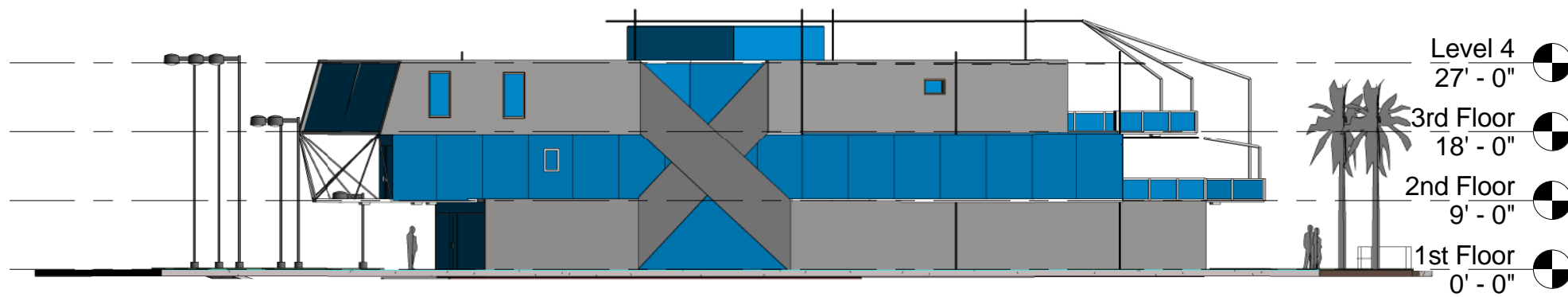
④ 4



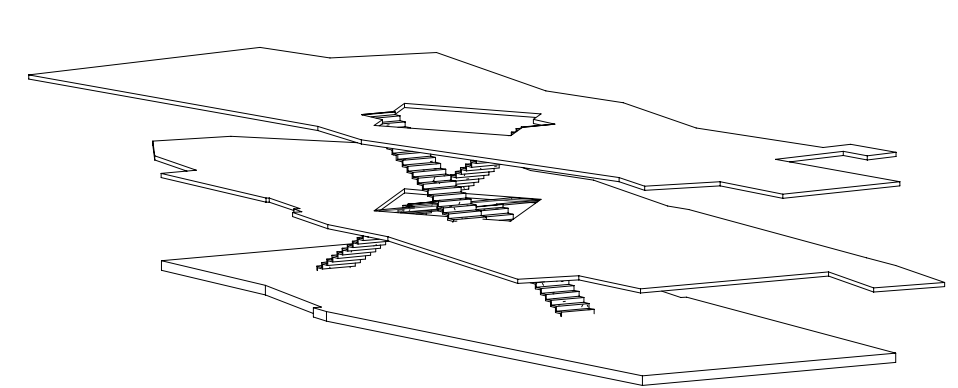
Glass walls
Windows

⑤ 5

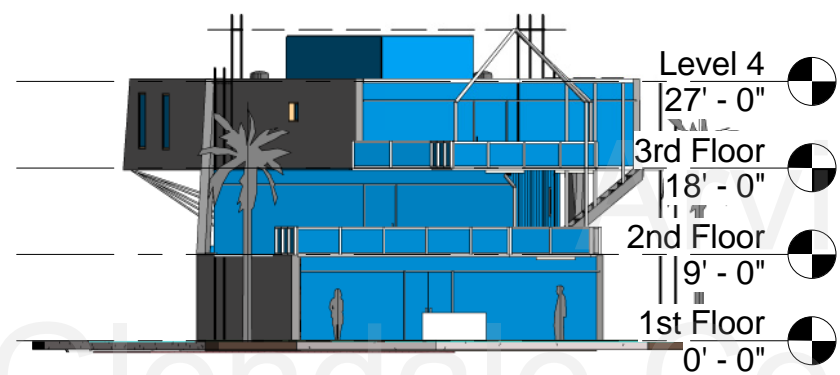
Arvin Shirinyans
Cale Community College, CA



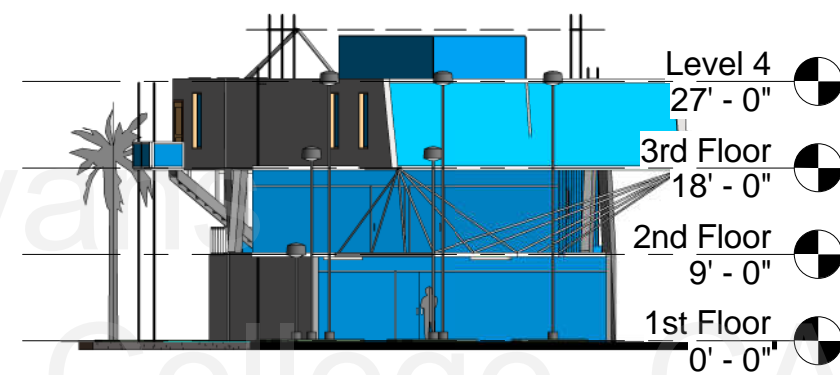
③ EAST ELEVATION
1" = 20'-0"



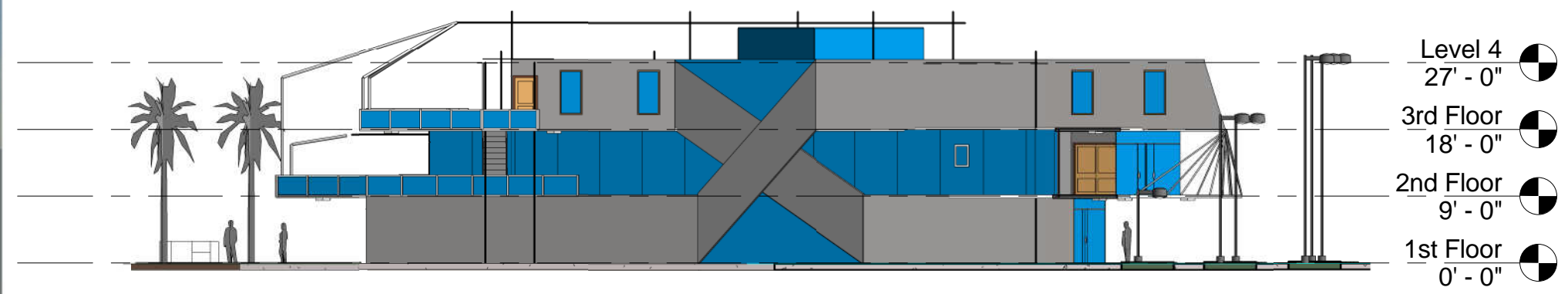
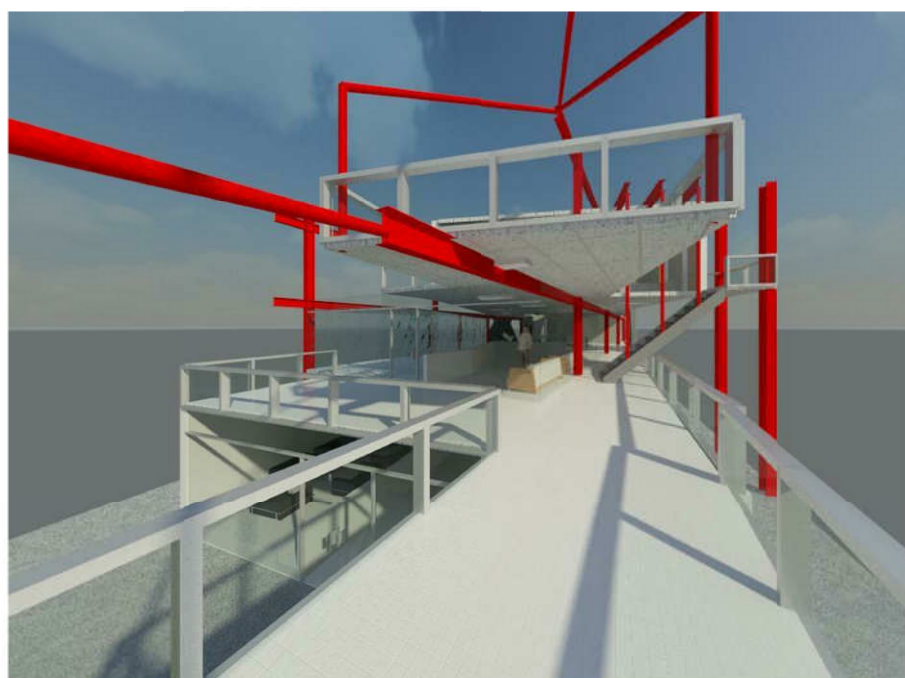
⑤ circulation



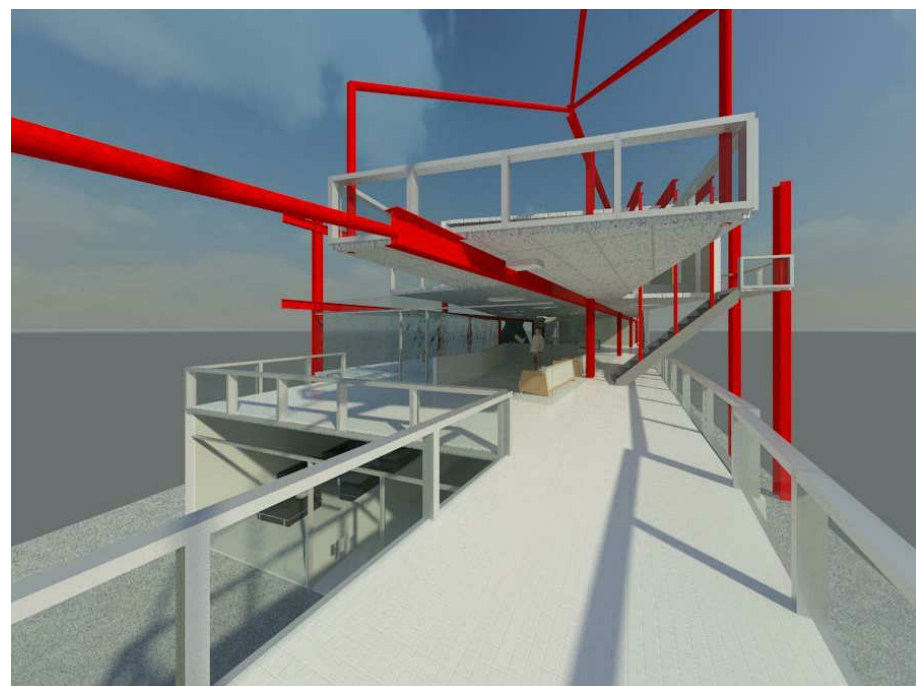
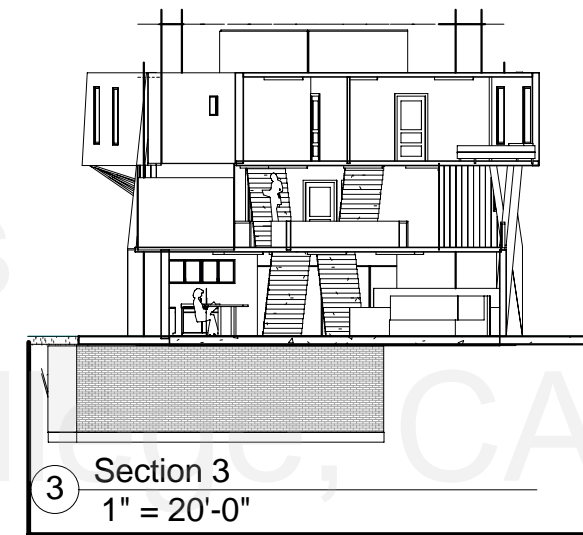
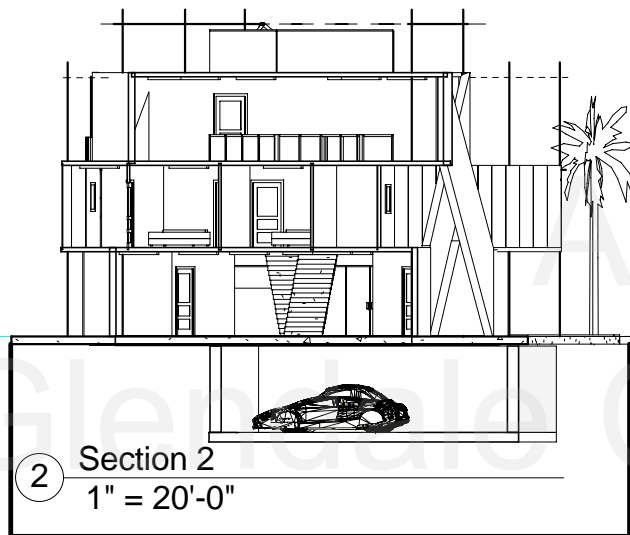
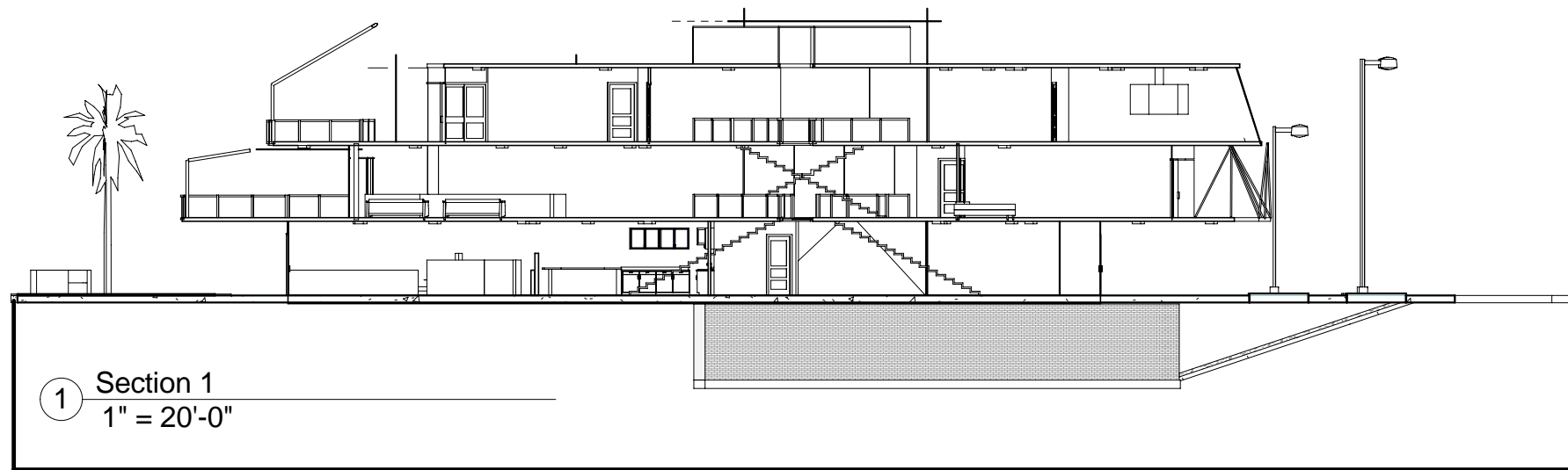
① SOUTH ELEVATION
1" = 20'-0"



② NORTH ELEVATION
1" = 20'-0"



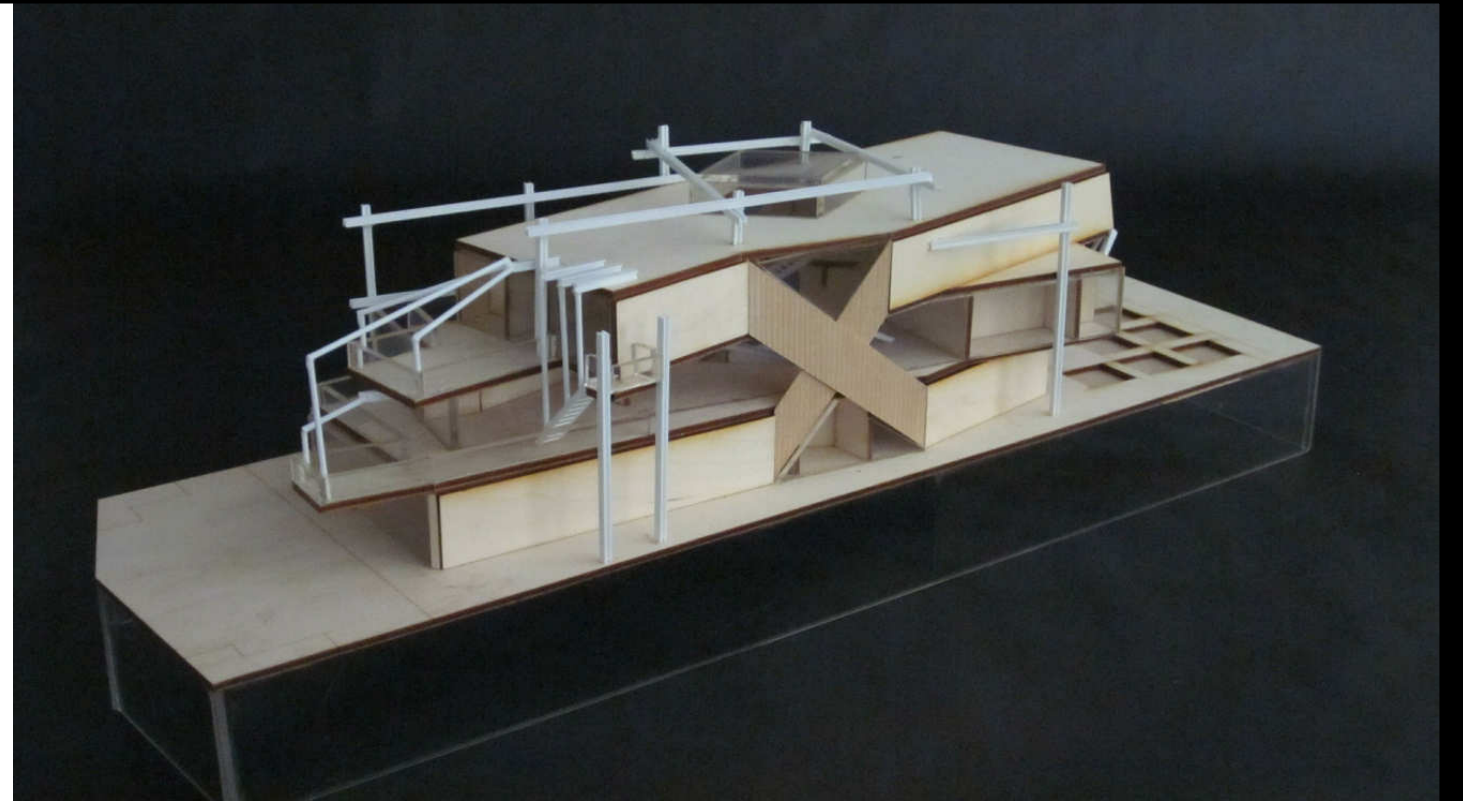
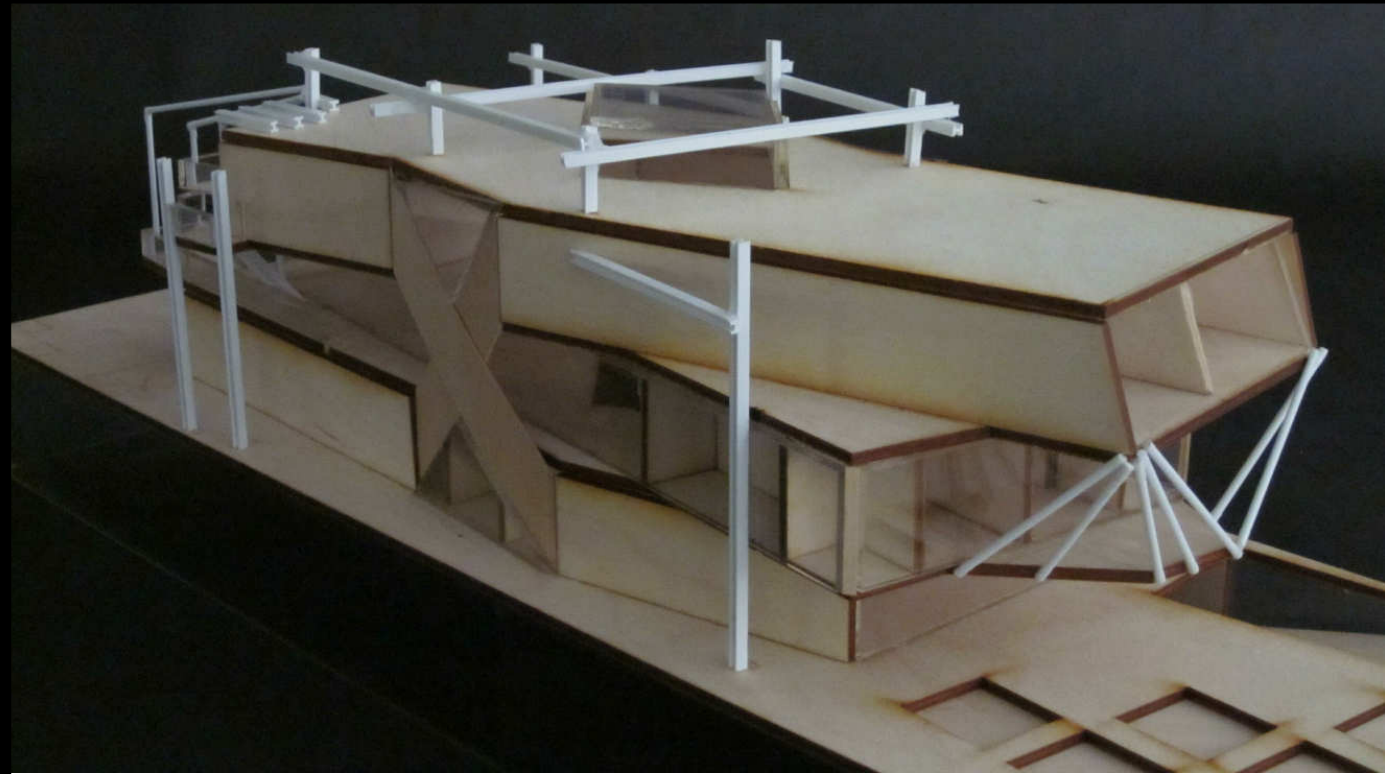
④ WEST ELEVATION
1" = 20'-0"





Renderings of
the Magician House

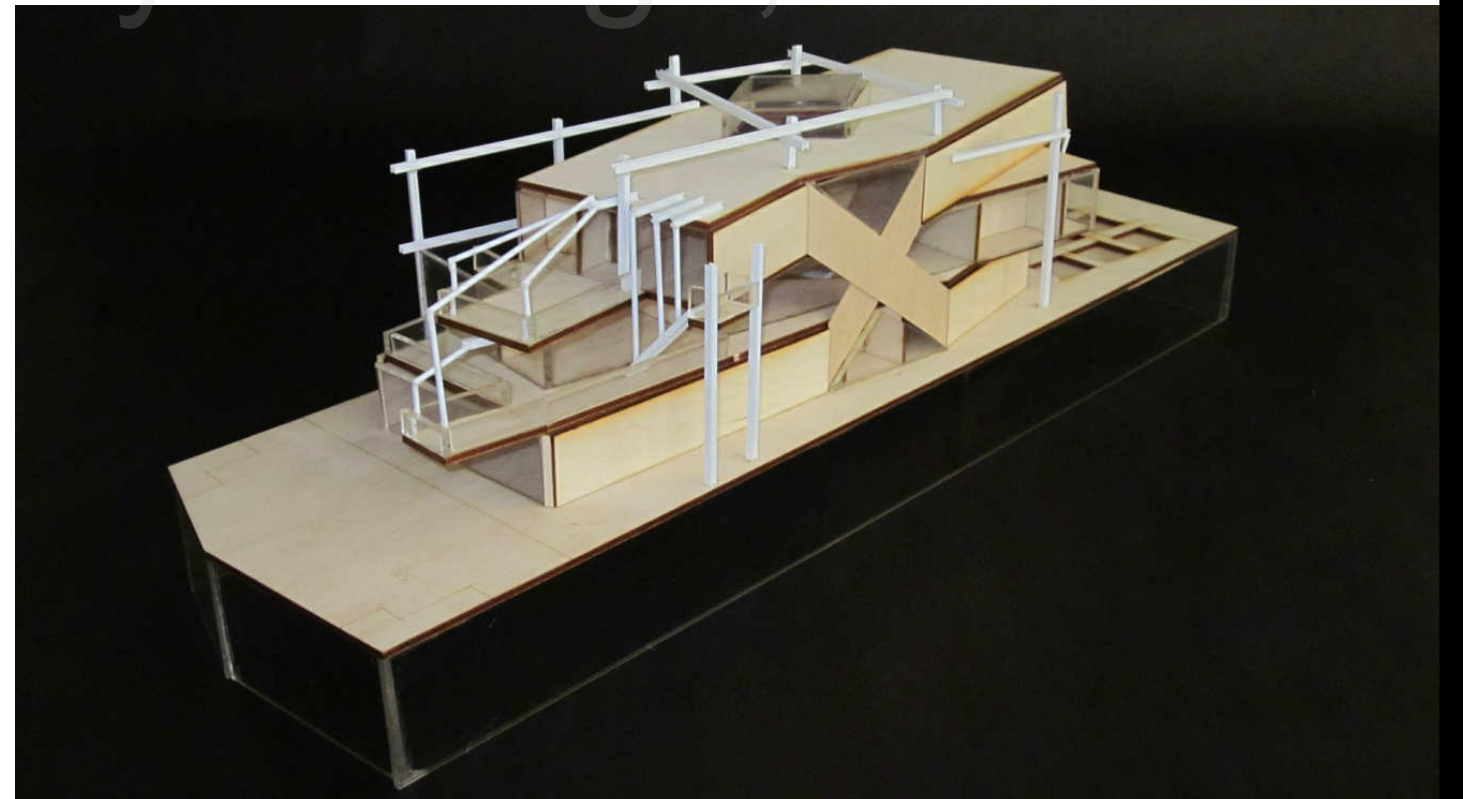
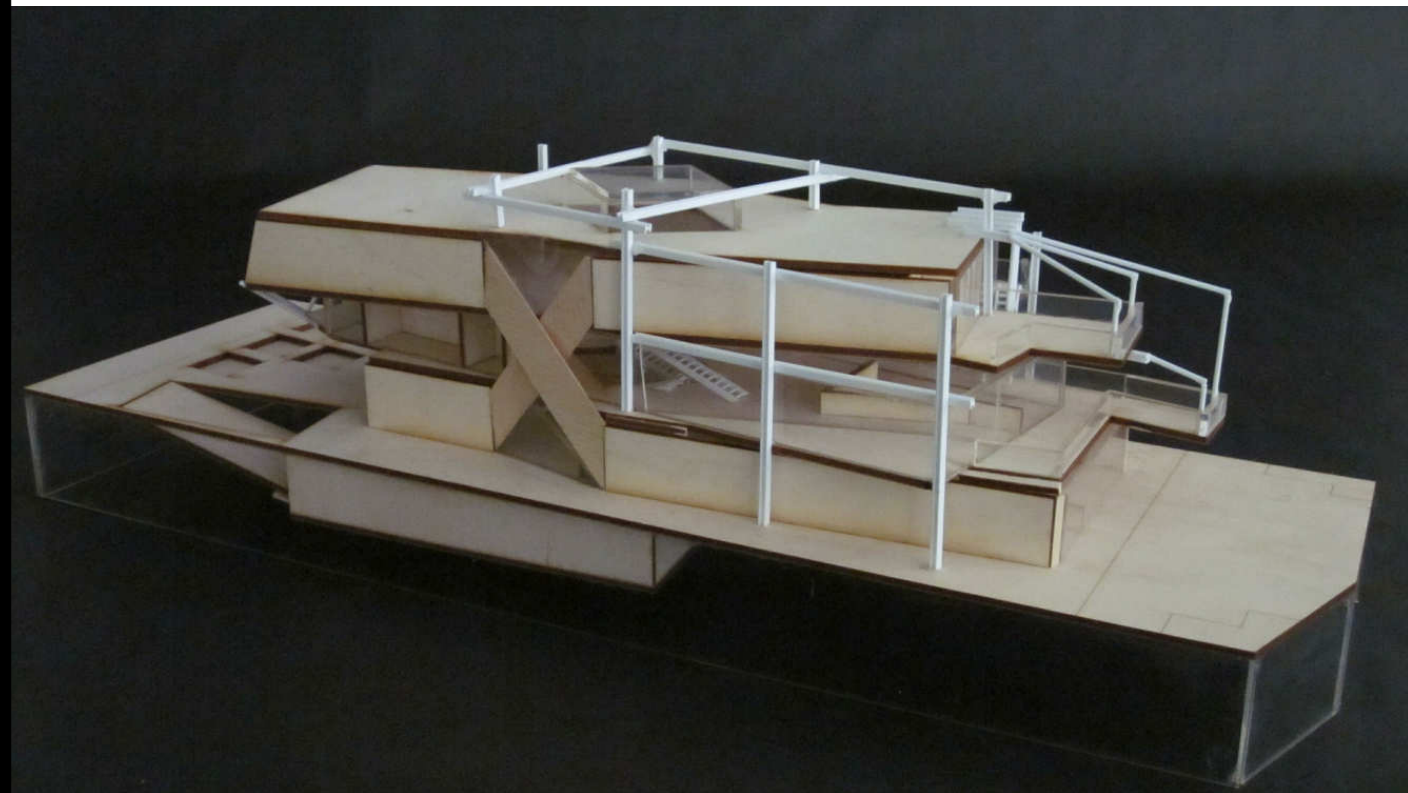




Arvin Shirinyans
The Magician House Model

10

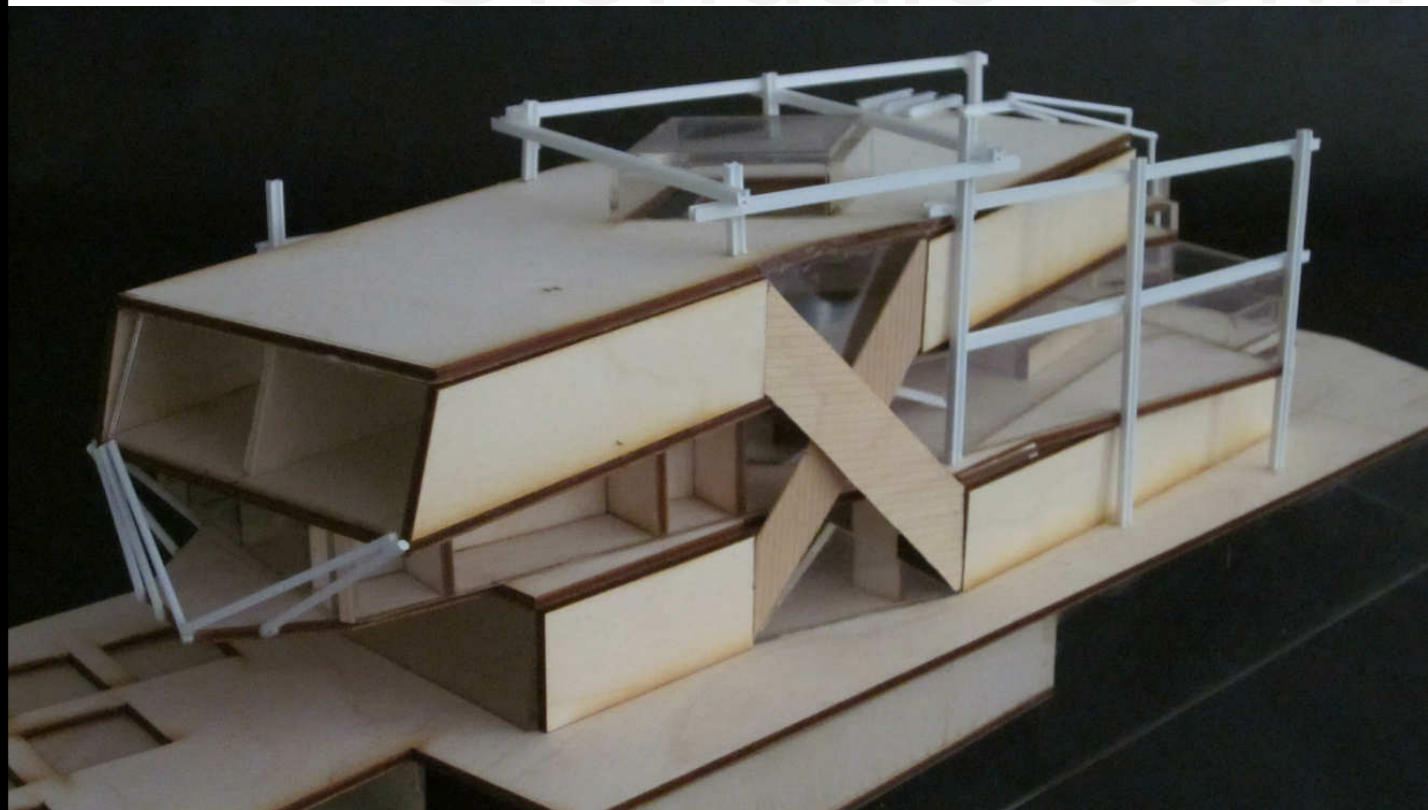
Glendale Community College, CA





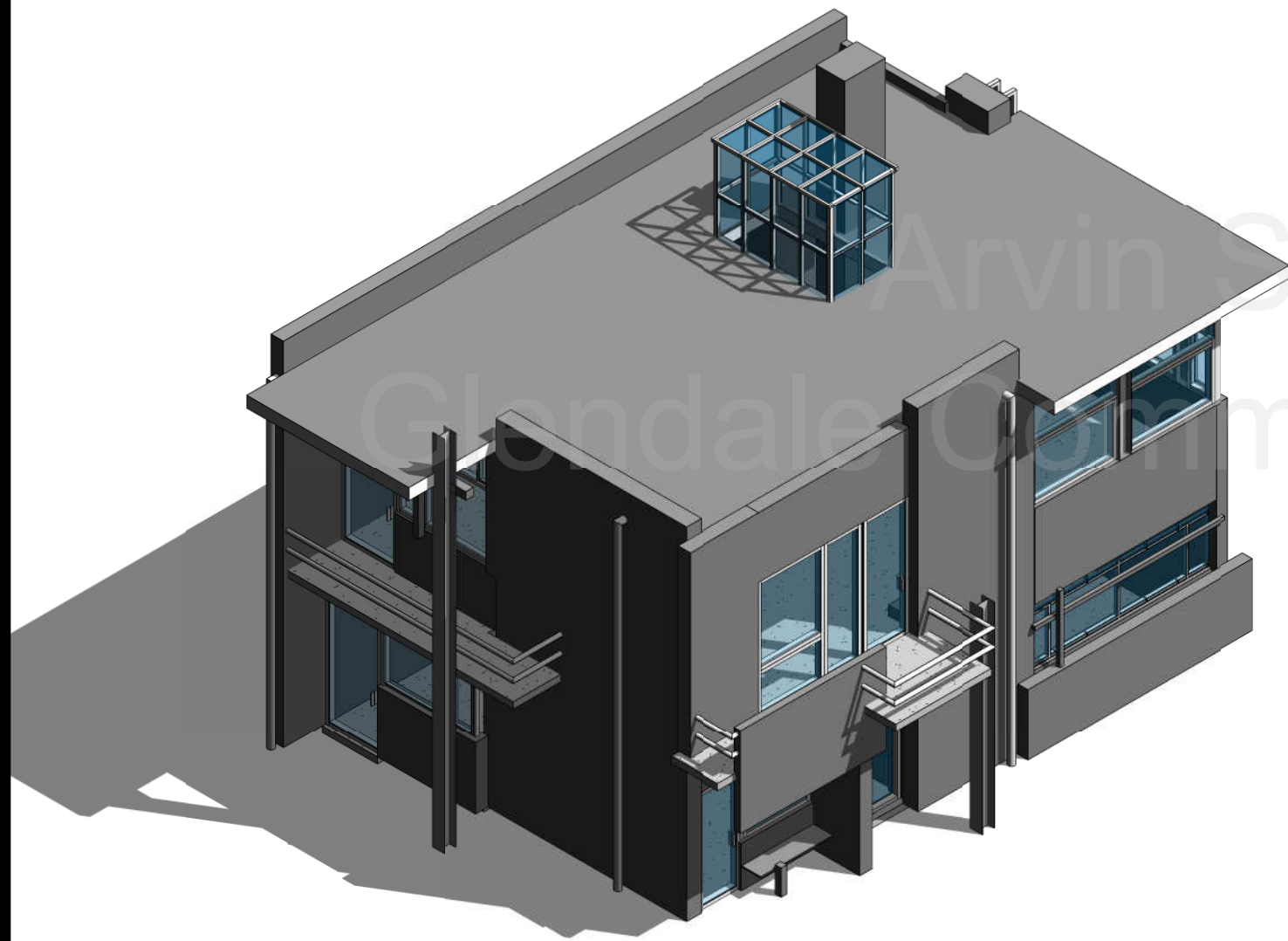
Arvin Shirinyans
The Magician House Model

Glendale Community College, CA

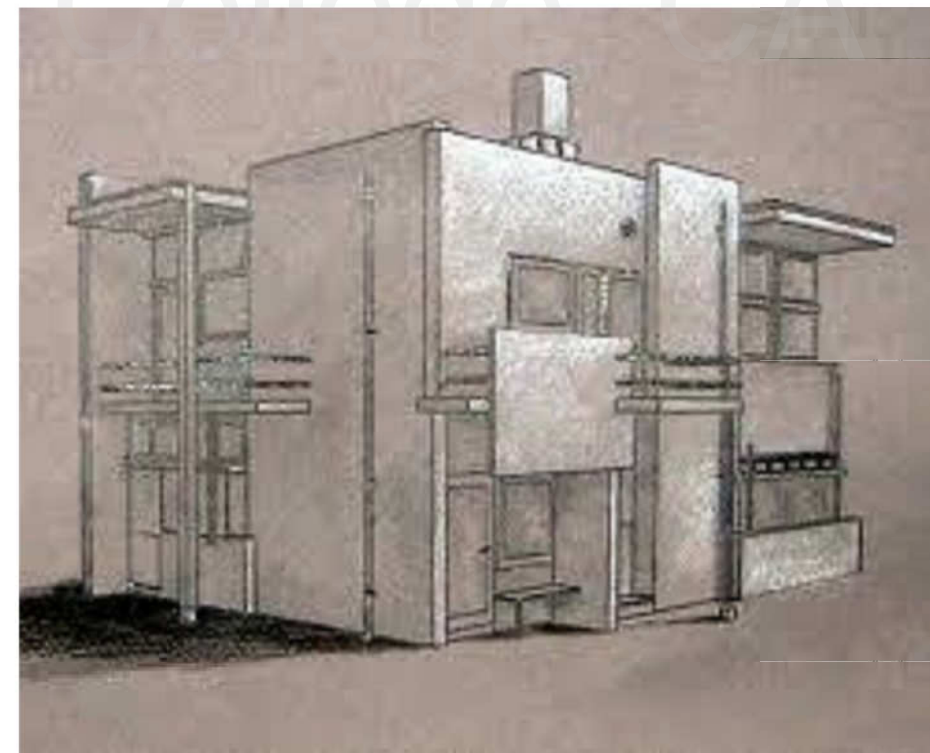


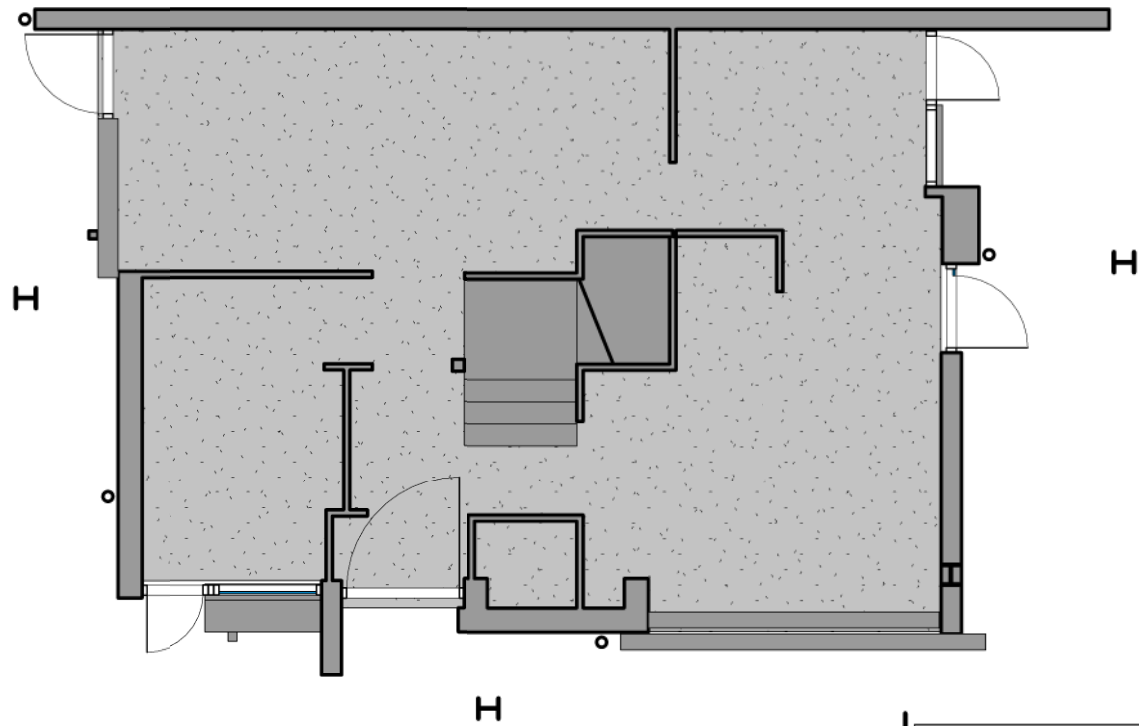
Schroder House by Gerrit Rietveld

The Schroder house is a case study house which i chose to do.
The house is built in Utrecht, Netherland in 1924, and is a museum now.
The house is a corner house across from a motorway built in 1960's.
This house is an example of De Stijl-Architecture and an icon of the
Modern Movement in architecture.

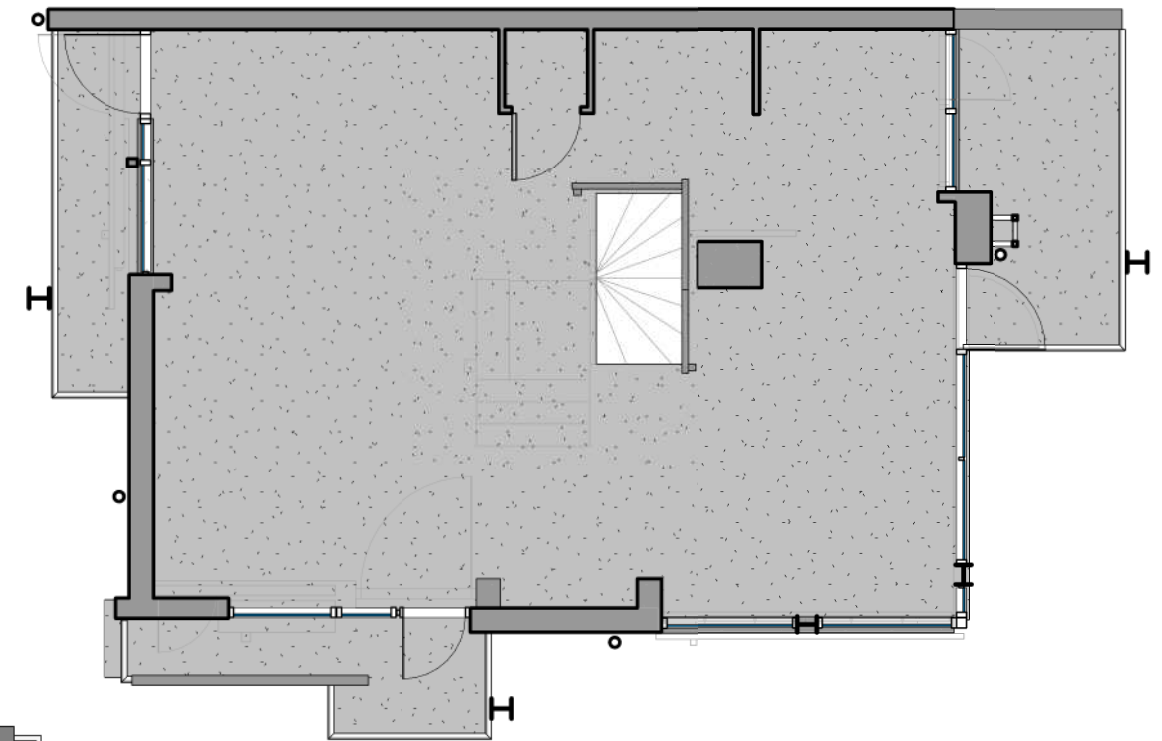


① Isometric view

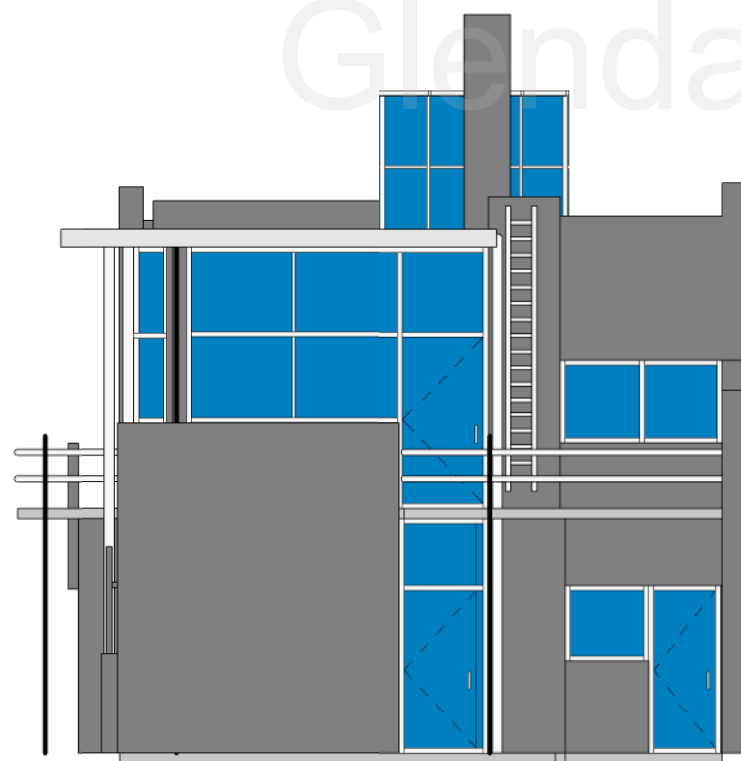




① 1st Floor
1/8" = 1'-0"



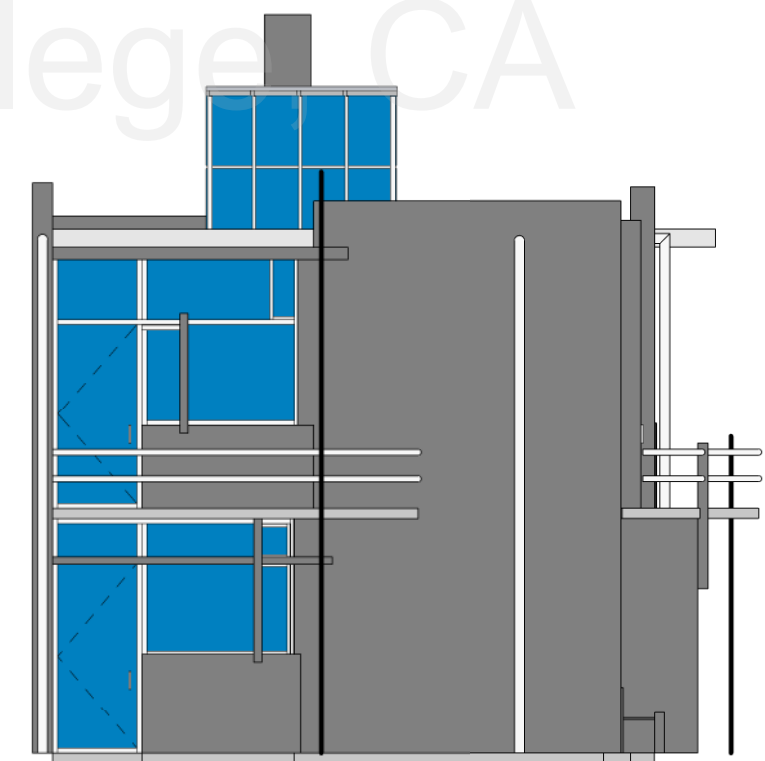
② 2nd Floor
1/8" = 1'-0"



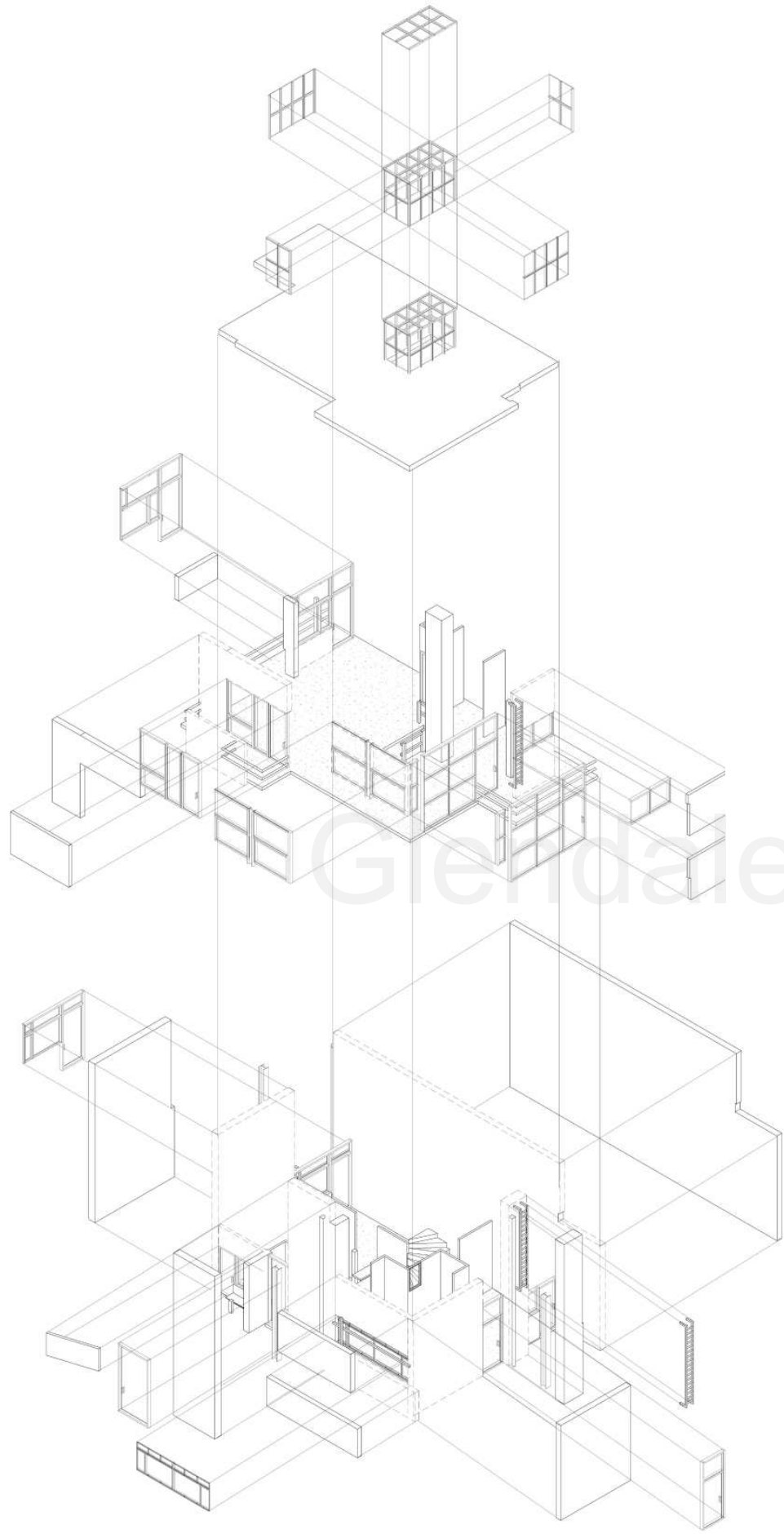
③ East Elevation
1/8" = 1'-0"



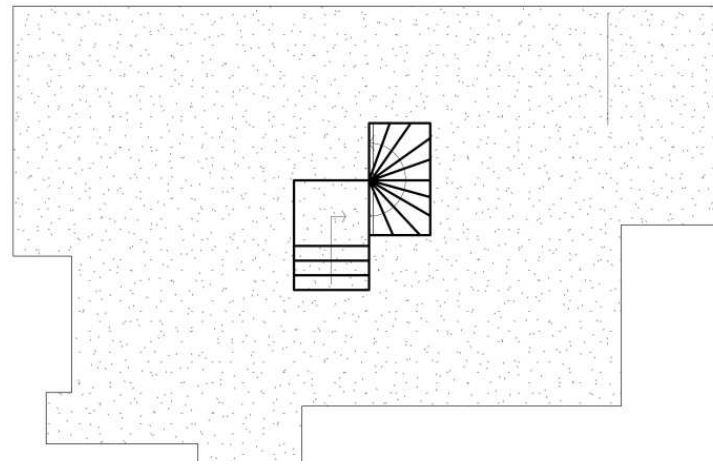
⑤ South elevation
1/8" = 1'-0"



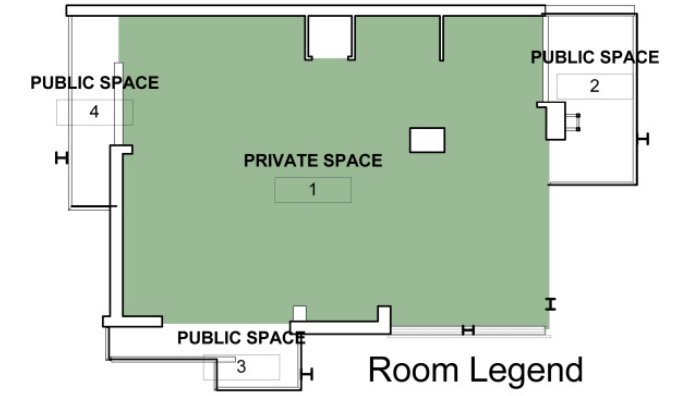
④ West Elevation
1/8" = 1'-0"



Exploded View



Circulation Diagram



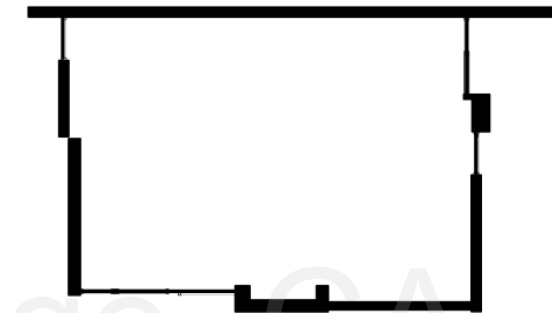
Room Legend

- PRIVATE SPACE
- PUBLIC SPACE

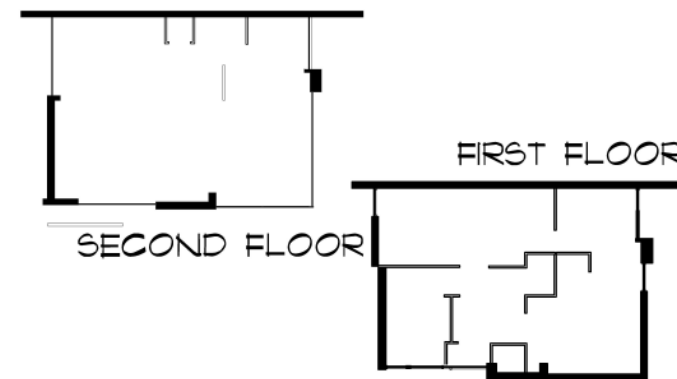
Program Diagram



Structure Diagram

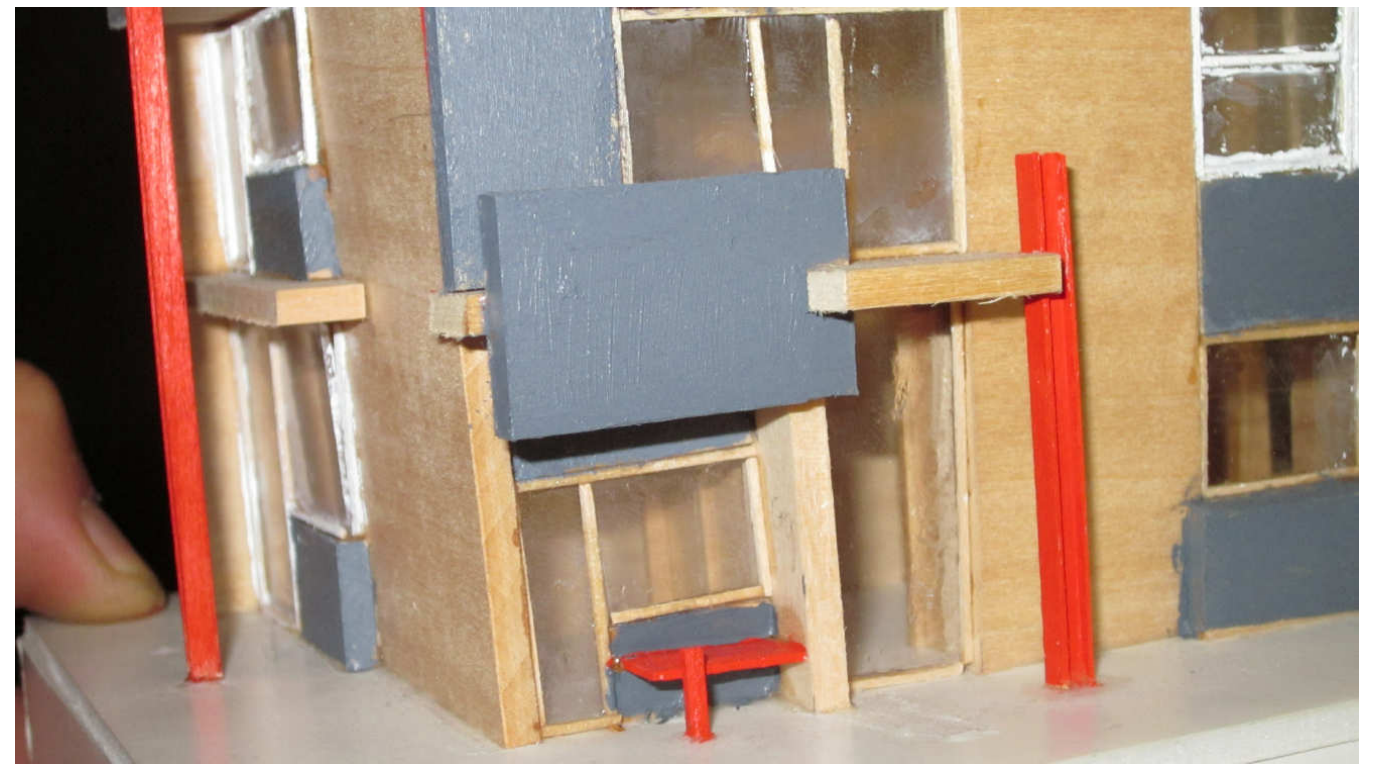


Parti Diagram



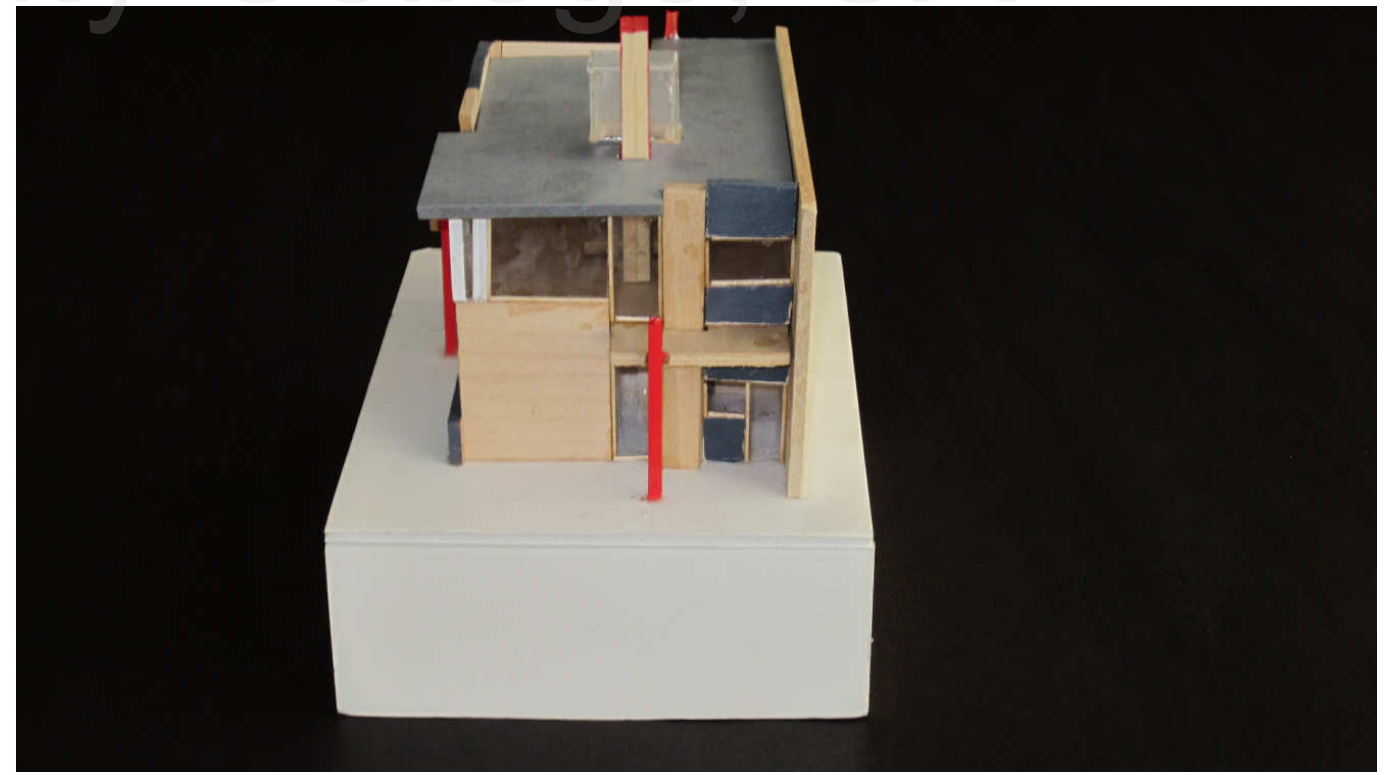
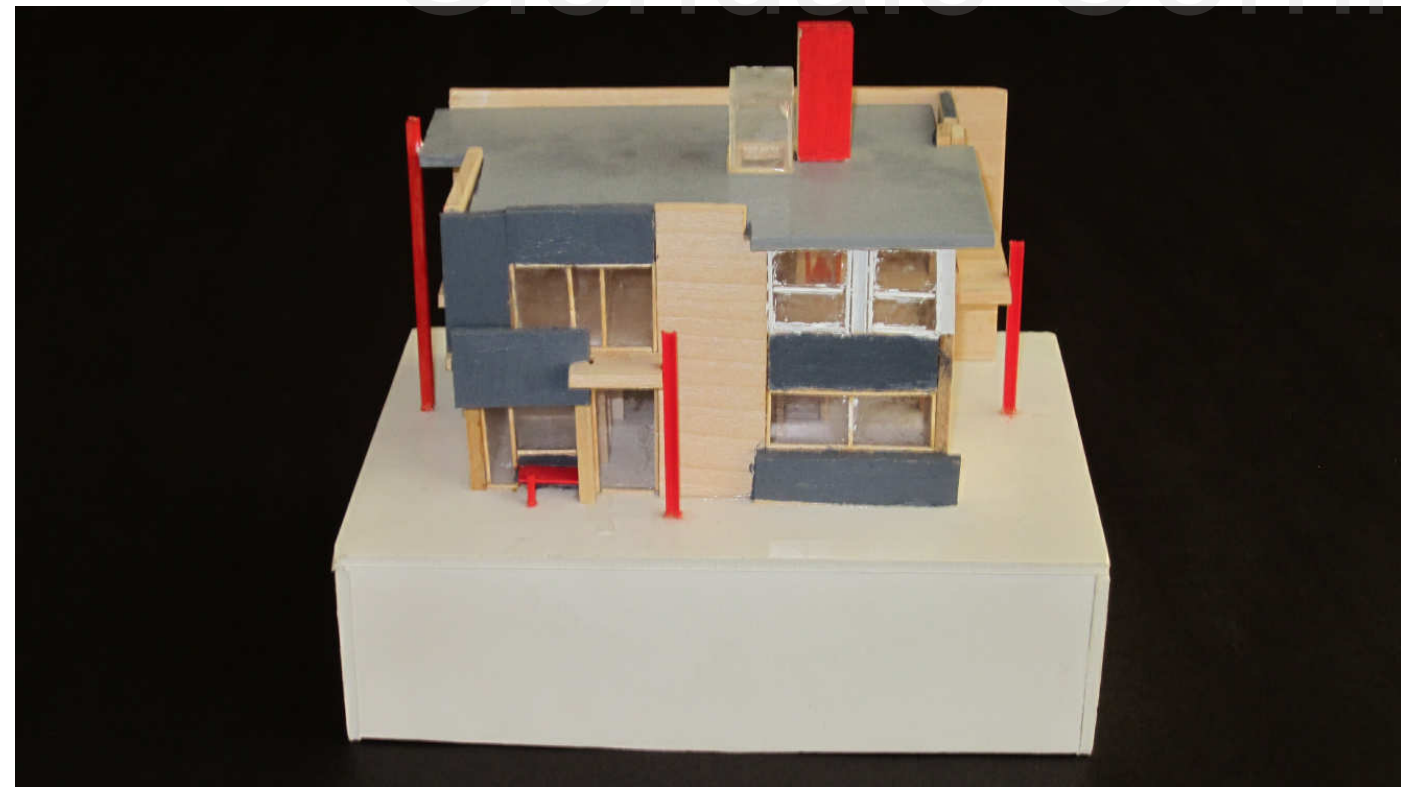
Enclosure Diagram

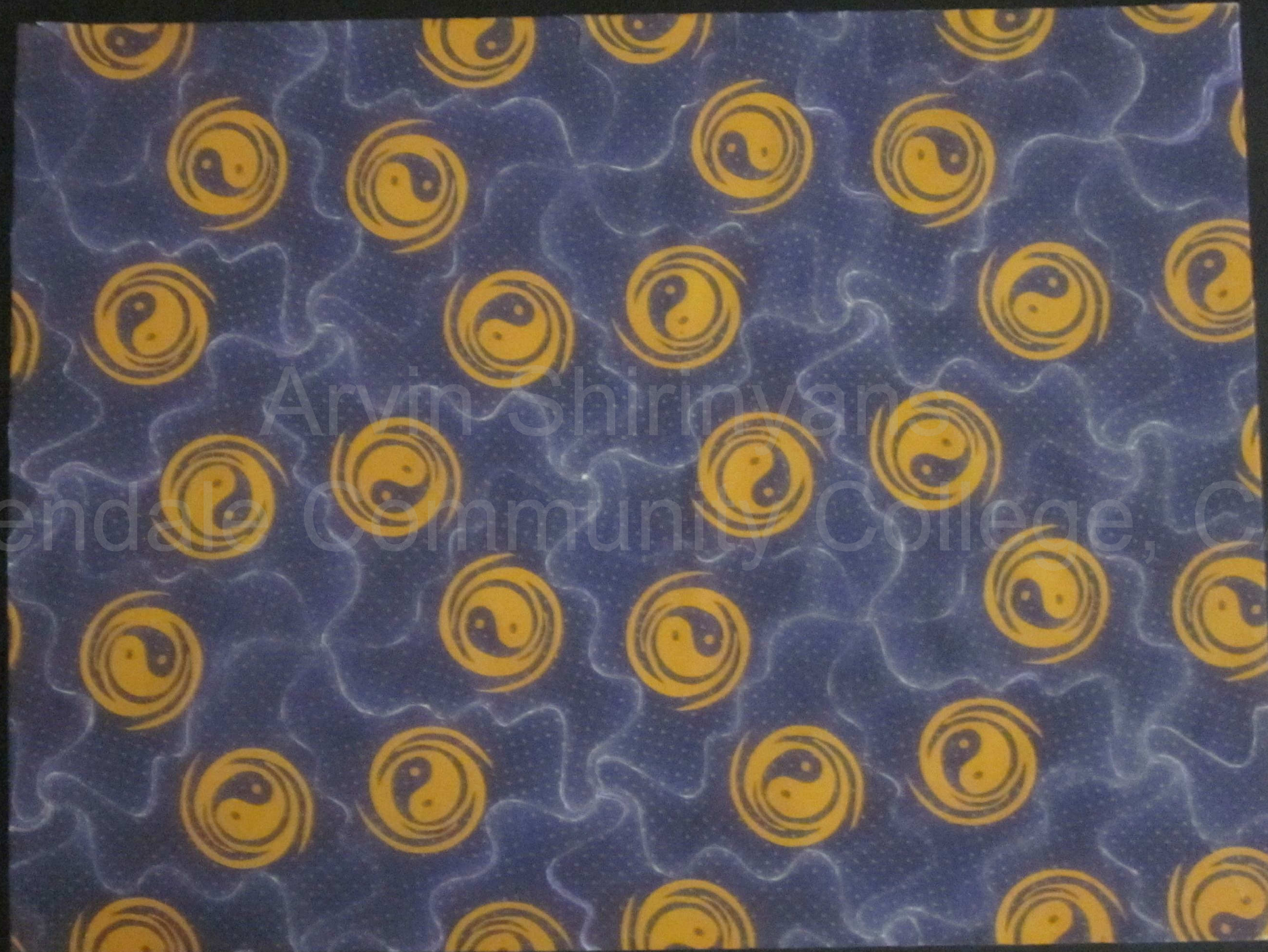
Arvin Shirinyans
Glendale Community College, CA



Schroder House Model

Arvin Shirinyans
Glendale Community College, CA



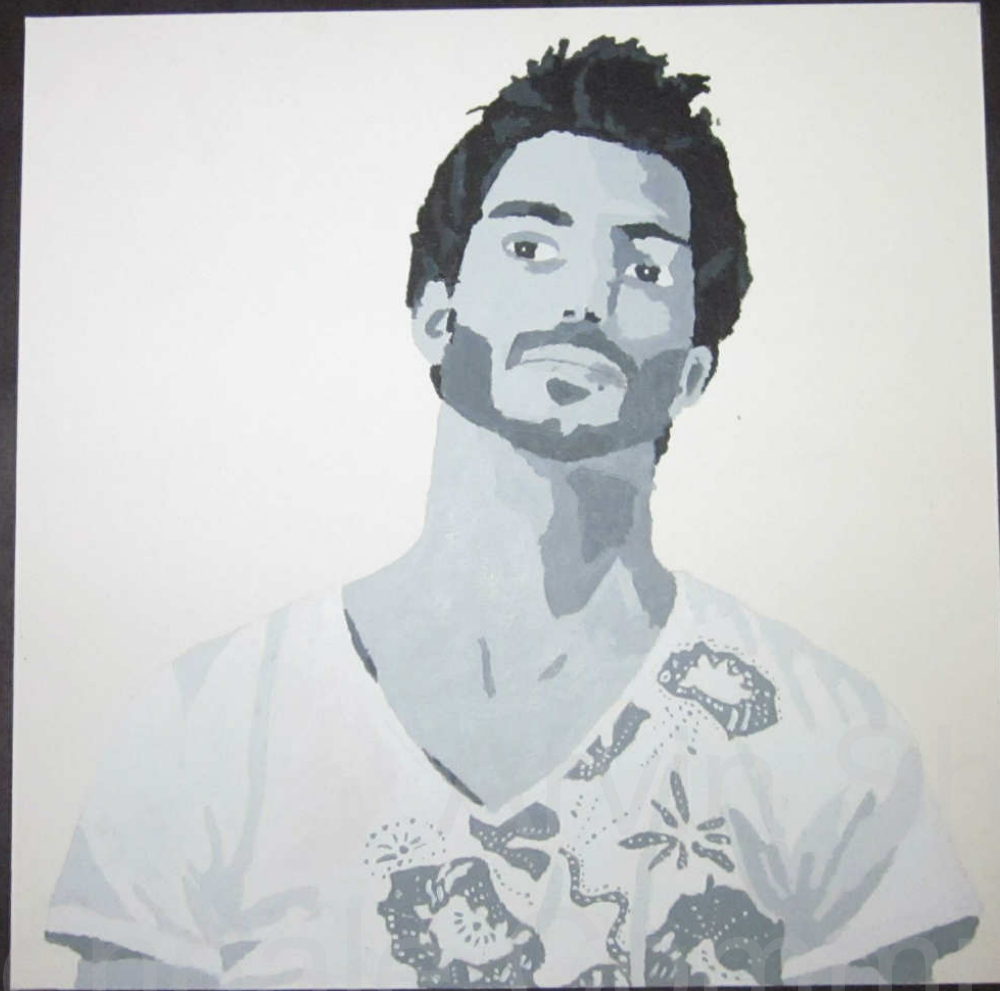


Arvin Shirinyan
Glendale Community College, CA

The work contains several triangles put together, and they fit right into each other because of their special geometry.

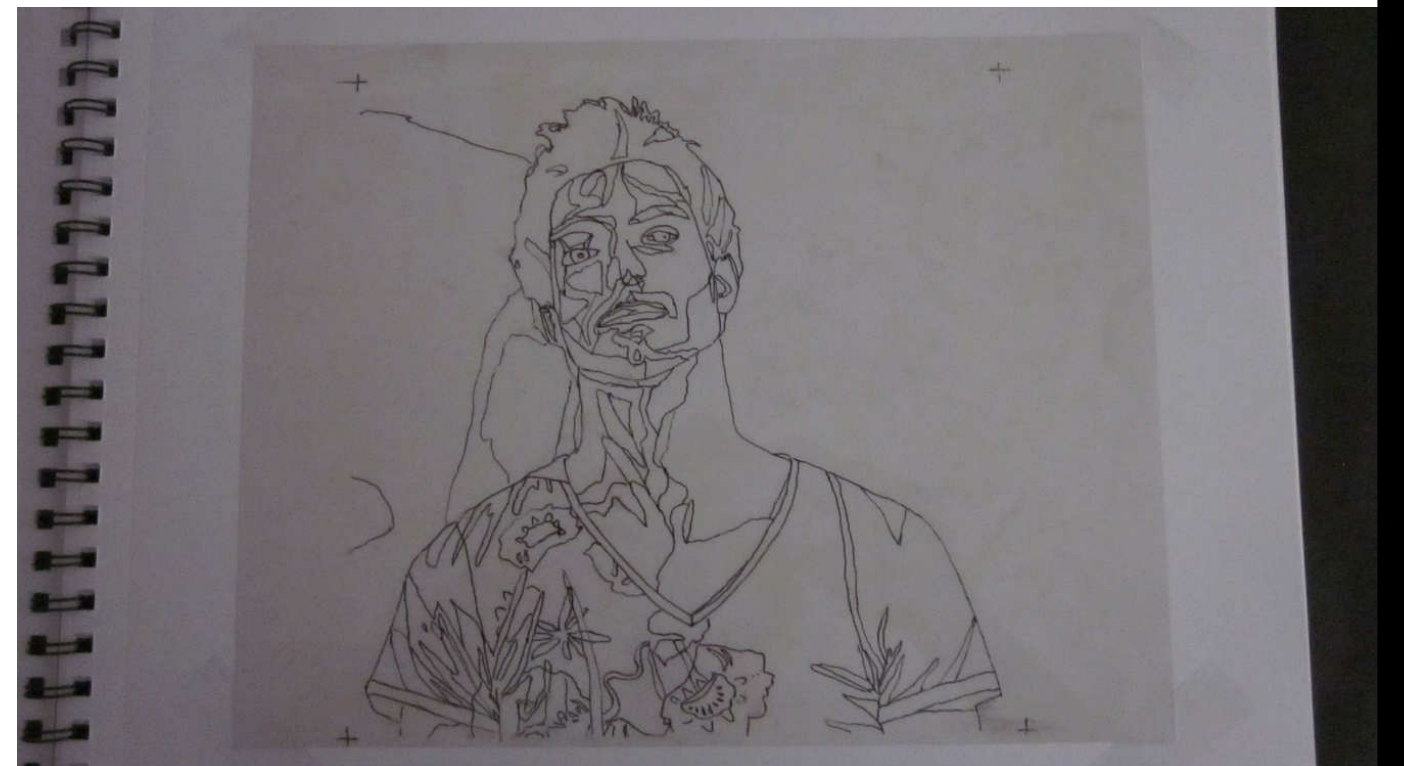


i used a variety of materials to redesign one of Gun's N Roses's albums.



Painting with gray scale

I outlined the picture due to different scales of darkness, then i numbered every outlined area relevant to their darkness. After that i made different shades of gray, using only black and white watercolors and filled the areas in.



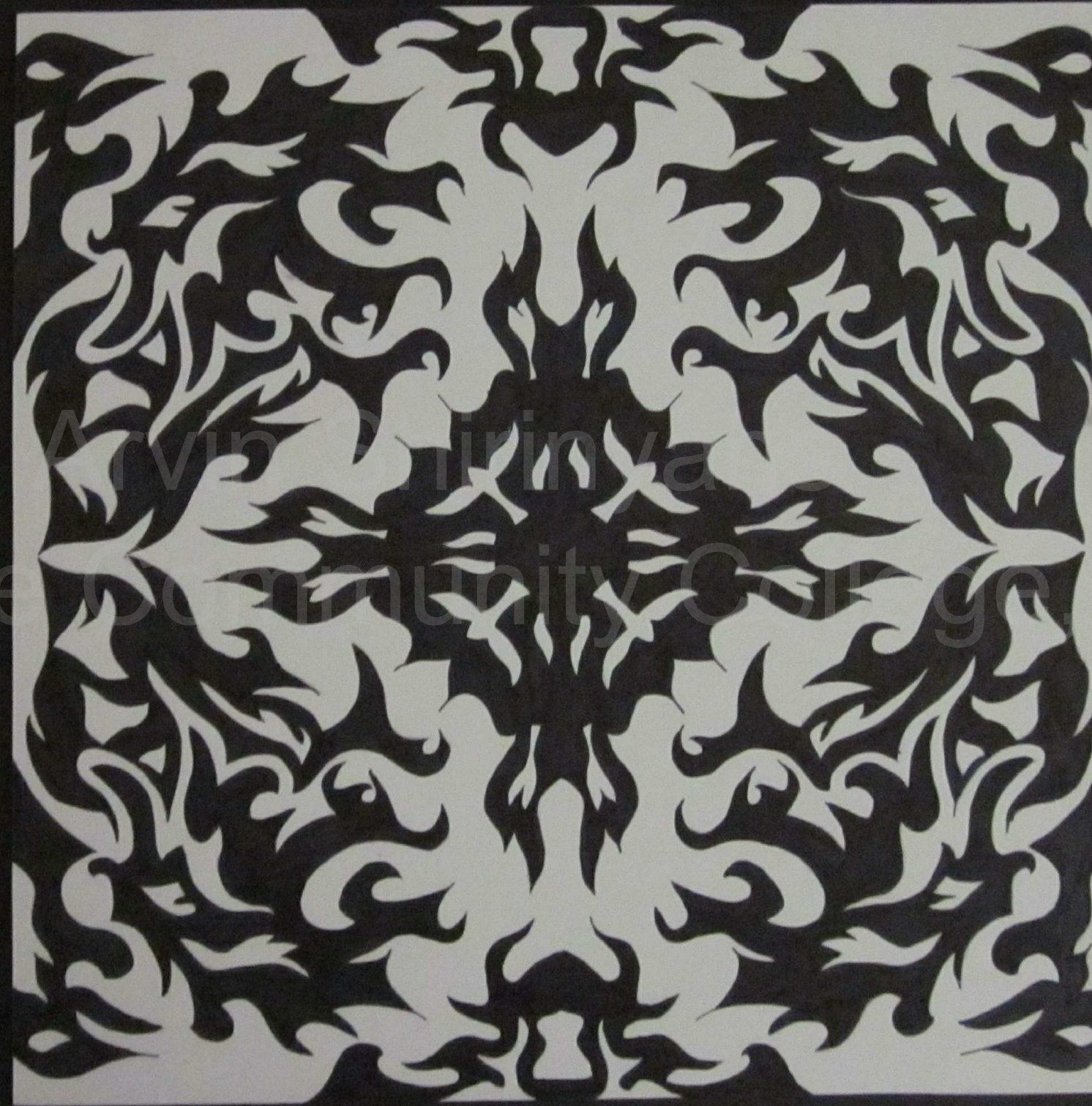
Mixture of colors



Arvin Shirinyans
Glendale Community College, CA

Using only the primary colors i made more than 20 colors and painted the board with a harmony in colors.

pattern



20

i drew a pattern and flipped it four times, in order to create this pattern, and used black marker to paint on a foamboard.

DESIGN VILLAGE 2011

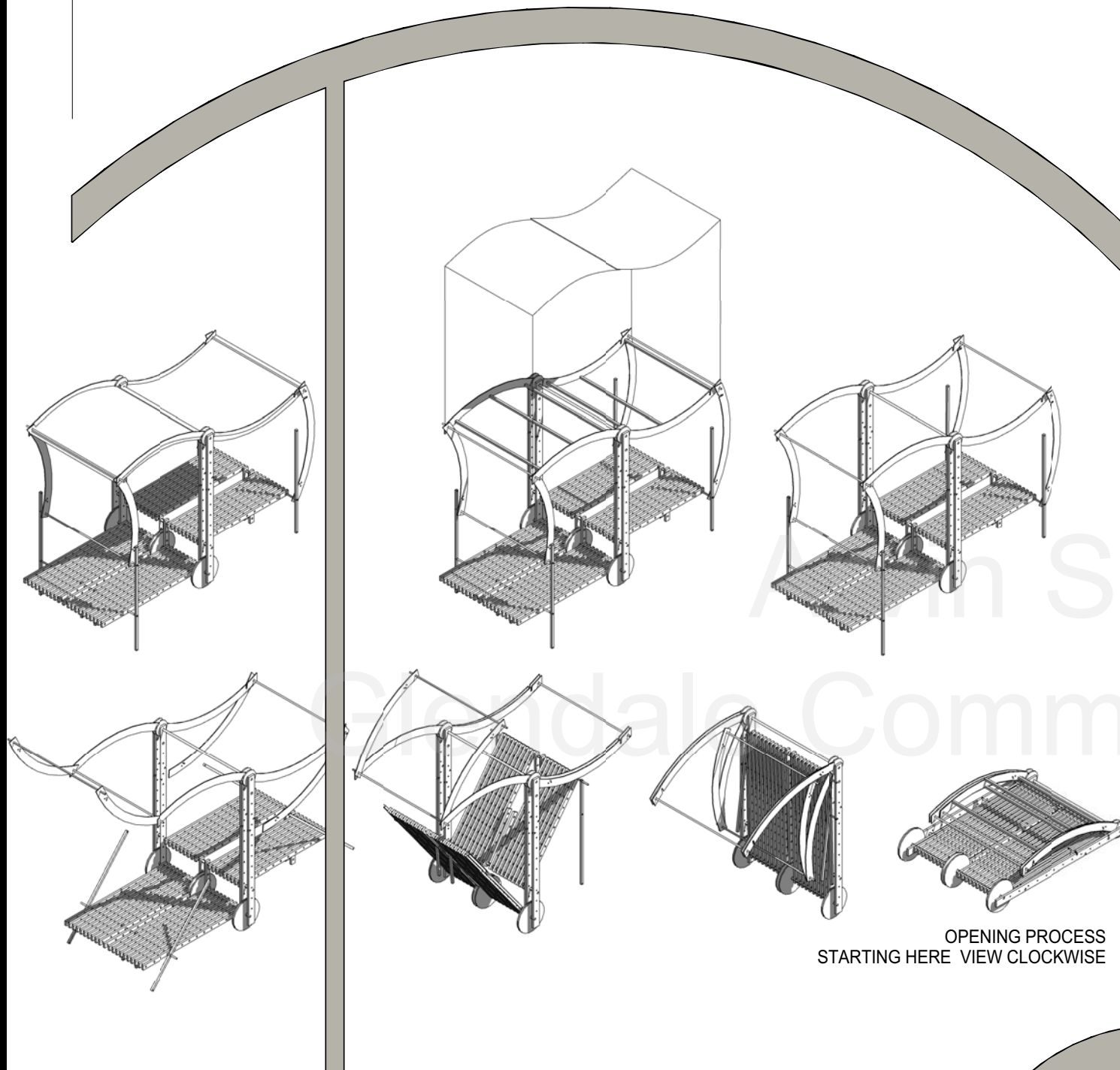
CALPOLY SAN LUIS OBISPO SOCIAL PARAMETRICS

THE DESIGN CONCEPT IS TO CREATE A PORTABLE MACHINE MADE OUT OF MOVABLE PARTS WHICH WILL CREATE AND PROMOTE SPACES FOR SOCIAL INTERACTION BETWEEN THE USERS WITH THE HELP OF THE SKIN OF THE STRUCTURE.

THE PARAMETRIC COMPONENTS ARE THE SUPPORTING COLUMNS, ROOFS, ROOF SUPPORTS AND THE SPILT LEVEL FLOOR DECKS. IT IS A RELATIONSHIP BETWEEN DIMENSIONS AND VARIABLES TO GEOMETRY ORIENTATION IN SUCH A WAY THAT WHEN THE DIMENSIONS AND VARIABLES CHANGE, THE PARTS CHANGE THEIR ORIENTATION AS WELL, FOR EXAMPLE THE OPENING AND CLOSING MOVEMENT OF A SWISS ARMY KNIFE. A SPILT LEVEL DECK ACTS AS STRUCTURAL SKELETON TO ADAPT THE SLOPED LANDSCAPE. (THIS CONCEPT ALSO GOES ALONG WITH THE TWO ATTACHING PORTALS.) THE PORTALS WILL ACT AS ENTRANCES TO THE MAIN STRUCTURE.

THE MAIN FULLY OPENED STRUCTURE WILL FORM THREE DIFFERENT SPACES INSIDE THE STRUCTURE, THE UPPER DECK, LOWER DECK AND THE LOWER DECK PATIO.

THE MATERIAL OF THE ROOF AND WALLS ARE FORMING AND INSULATING AS THE SKINS OF THE STRUCTURE. THE CHOICE OF MATERIAL - COLORFUL BUBBLE WRAP SKIN IS TO STIMULATE THE USER TO POP THE BUBBLES. THE POPPING SOUND ACTS AS A METAPHOR OF THE SOUND OF FIREWORKS AND IT RELATES TO THE CELEBRATION OF A SOCIAL EVENT.



OPENING PROCESS
STARTING HERE VIEW CLOCKWISE



STUDY MODEL



OPENING AND CLOSING MOVEMENT OF A SWISS ARMY KNIFE
ABOVE IMAGE IS BOUGHT TO YOU REFERENCED BY COOLEST GADGETS



UPPER DECK



BUBBLE WRAP AS A SOCIAL AND PLAYFUL TOOL.
ABOVE IMAGE IS BOUGHT TO YOU REFERENCED
BY ORBLE



ABOVE IMAGE IS BOUGHT TO YOU
REFERENCED BY MATT AND SARAH

PATIO

LOWER DECK

GLENDALE COMMUNITY COLLEGE TEAM

GORDON AU
RONALD HERNANDEZ
MARIA X. LANDIVAR
ARVIN SHIRINYANS
ARMEN SARKISIAN

DESIGN VILLAGE 2011

CALPOLY SAN LUIS OBISPO
SOCIAL PARAMETRICS



22



GLENDALE COMMUNITY COLLEGE TEAM

GORDON AU
RONALD HERNANDEZ
MARIA X. LANDIVAR
ARVIN SHIRINYANS
ARMEN SARKISIAN



FEATURING
ARVIN SHIRINYANS



Technical Knowledge
Revit Autodesk 2011
Autocad Autodesk 2011
THANK YOU

