

MARIA X. LANDIVAR  
ARCHITECTURE PORTFOLIO- 2011

# Content

- Introduction 1
- Main concept of the project
- Sketches
- Drawings and creation of the project
- 3D Views
- Floor Plans
- Elevation
- Diagrams
- Section Views
- Site and location of the project
- Render Views with different backgrounds
- Isometric renderized views
- Isometric renderized views
- Aerospace Engineer House's model 1
- Aerospace Engineer House's model 2
- Aerospace Engineer House's model 3

- Collage Painting
- Collage Painting zoomed in
- Drawing (art work)

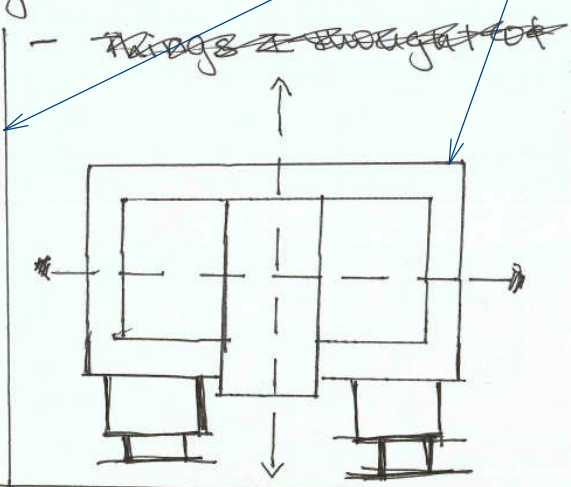
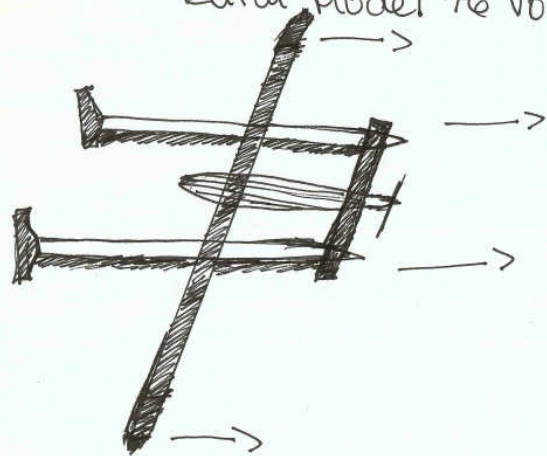
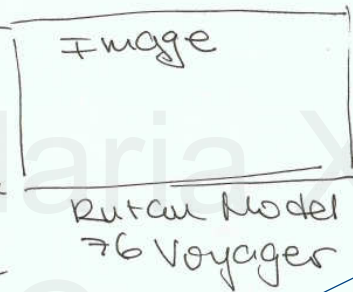
- Introduction 2
- Concept
- Sketches & Concept
- Theater Render views
- Social features & Interior
- Site and placement

- Cal Poly San Louis Obispo Design Village 2011
- Cal Poly San Louis Obispo Design Village 2011

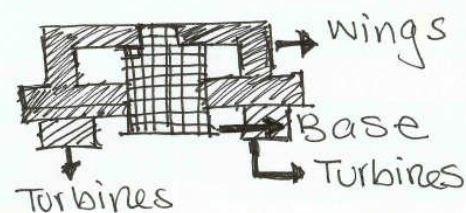
# Aerospace Engineer

## Aerospace Engineer

- I designed a house for an aerospace Engineer. Burt Rutan is an airplane designer also, who is very passionate about his work. created
- He designed the first airplane that went ~~around~~ around the world without stopping for gas.
- It was a personal design for him and in order for me to work for him and help him identify ~~himself~~ with his ~~new~~ house I chose the Voyager Aircraft as a concept a main concept for my house. his house. Rutan Model 76 Voyager

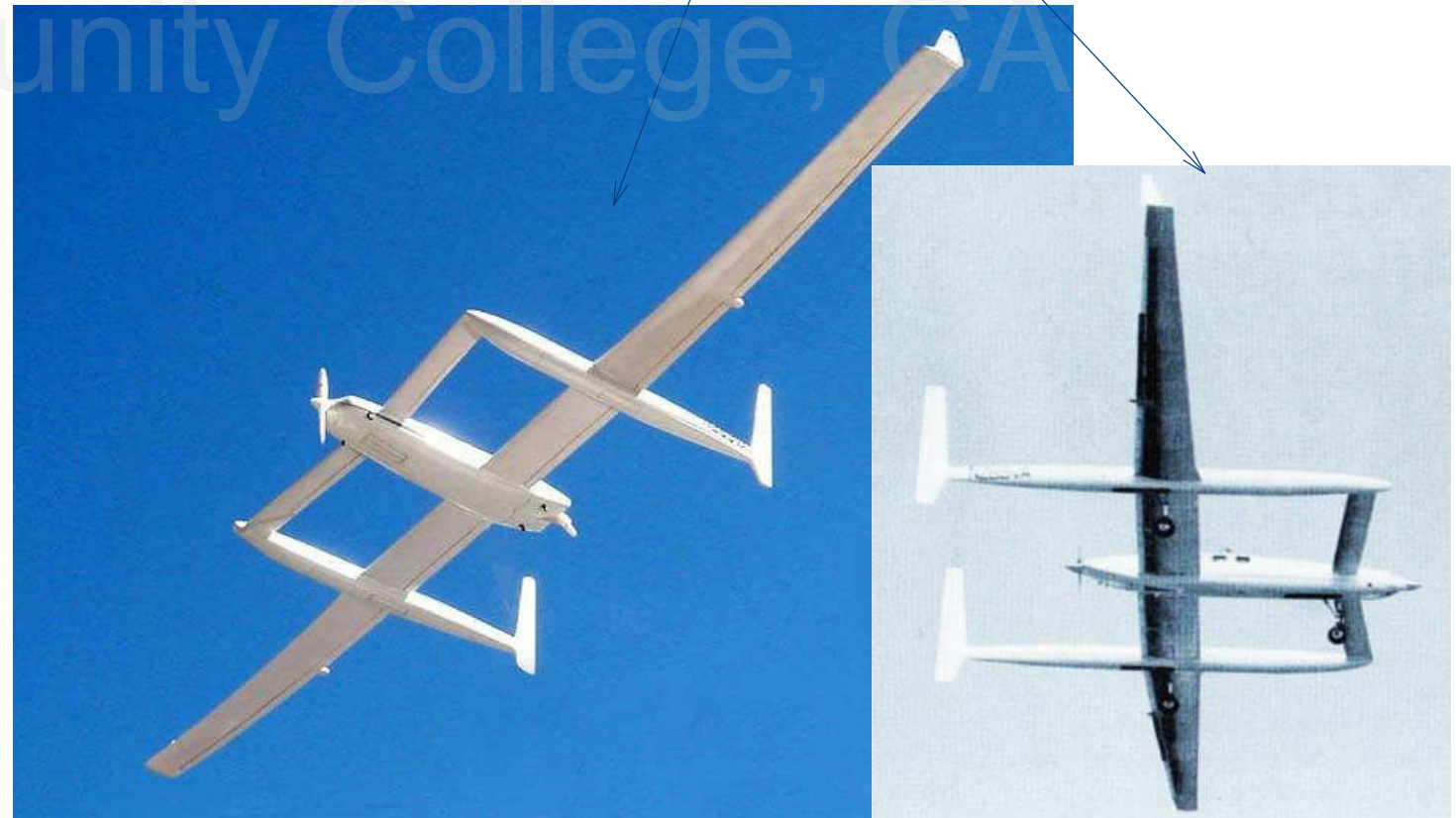


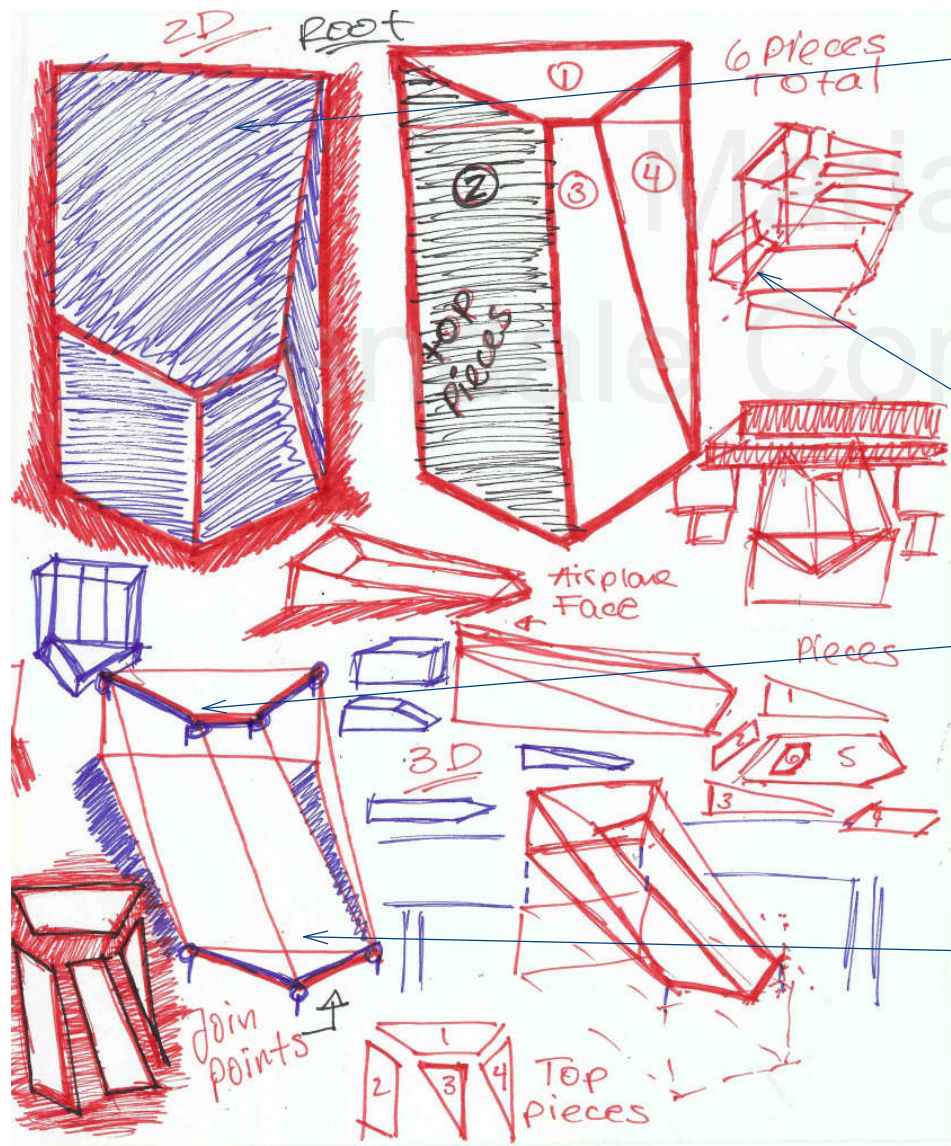
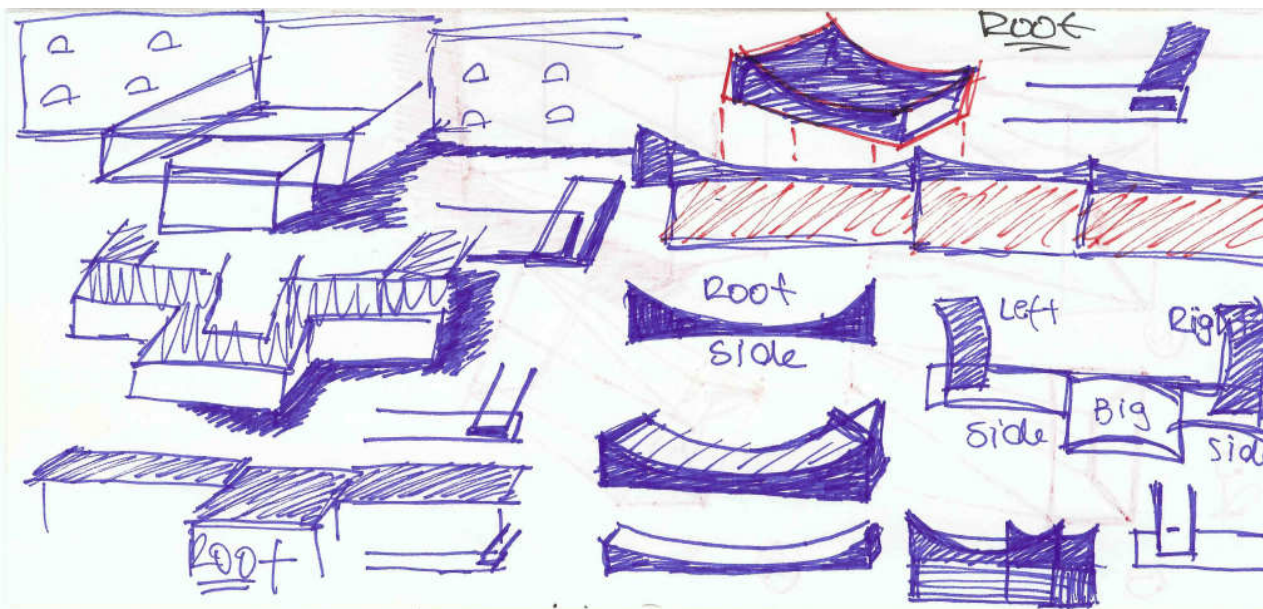
- Shadows
- floating
- Lifted concept
- water
- Light
- Light walls



-In this project I worked as an Architect for an aerospace Engineer. His name is Burt Rutan and he is passionate about his work.

-Concept development



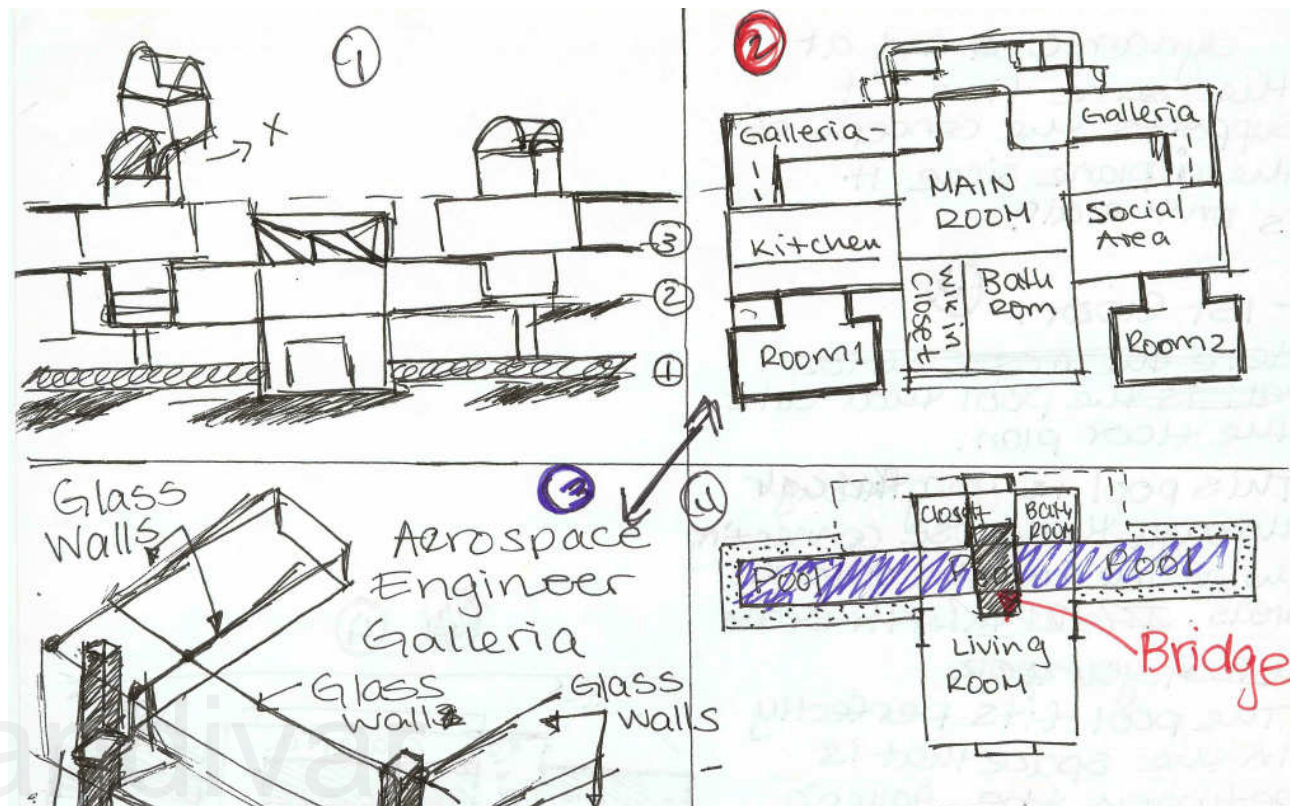


-2D Roof Sketch

-6 Pieces

-3D Roof Sketch

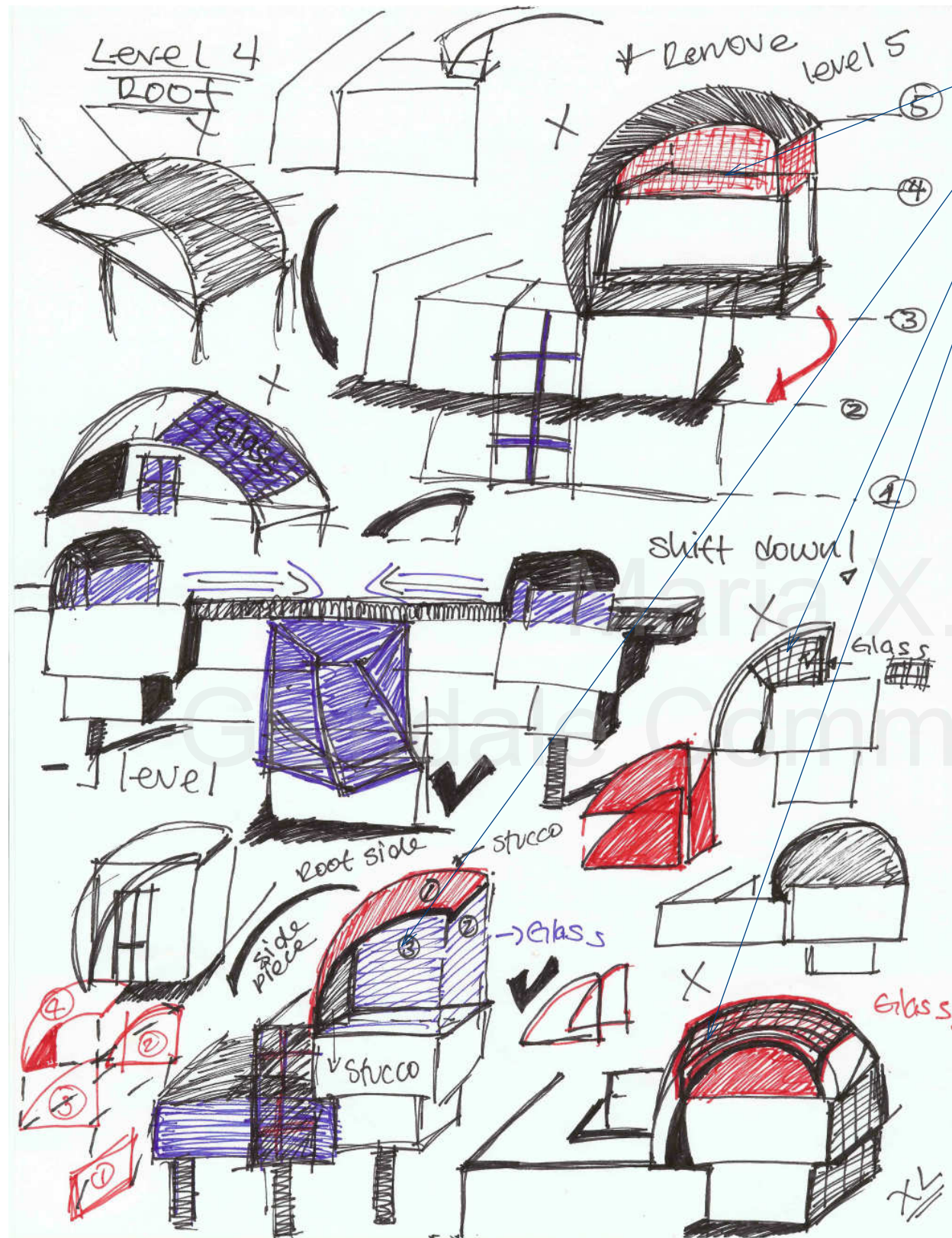
-Joint Points



windows -  
 - It intercalated the glass walls with stucco walls, so that when you walk through this shape you have more light in some areas than a first more light from the right, then more light from the left and on.  
 Also while you are looking to the exposition you have ~~more~~ different views such as the pool downwards, the house to right, and the landscape to the left. This gives an impression of movement and interaction with the walls to make the galleria ~~more~~

As an engineer and designer that he is, I put a personal space for him where he can show his aircraft models and made it a walk through to go from the left to right side of the house.

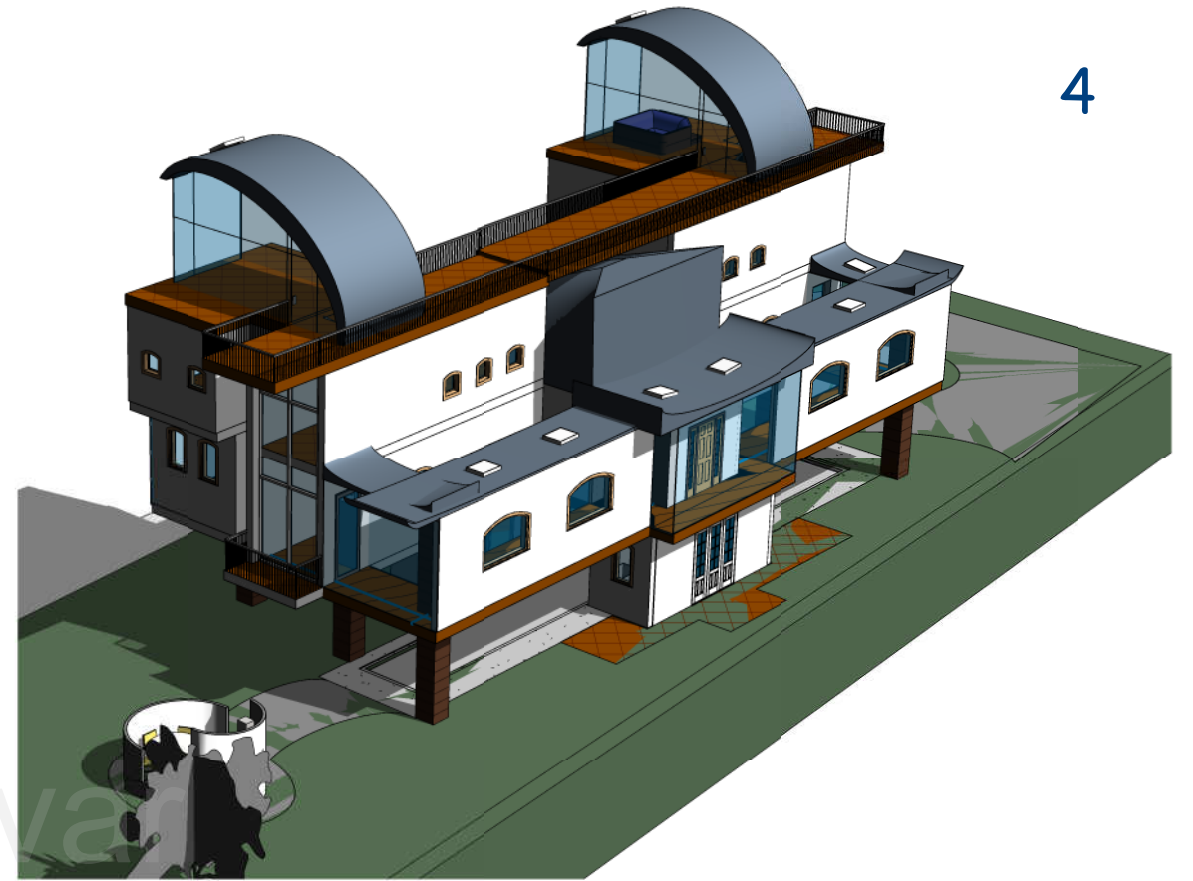
Since this part of the house will be an aircraft exposition, I played with the light and walls and

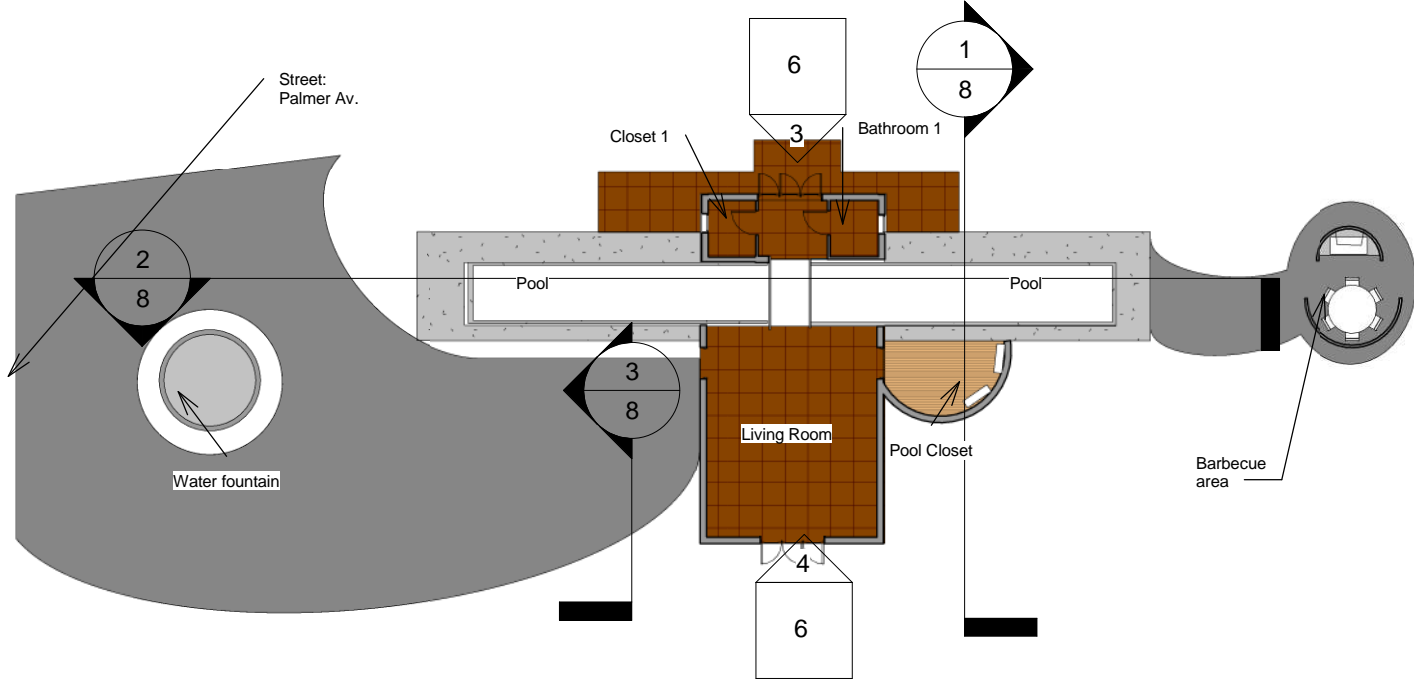


## Level 4 Roof

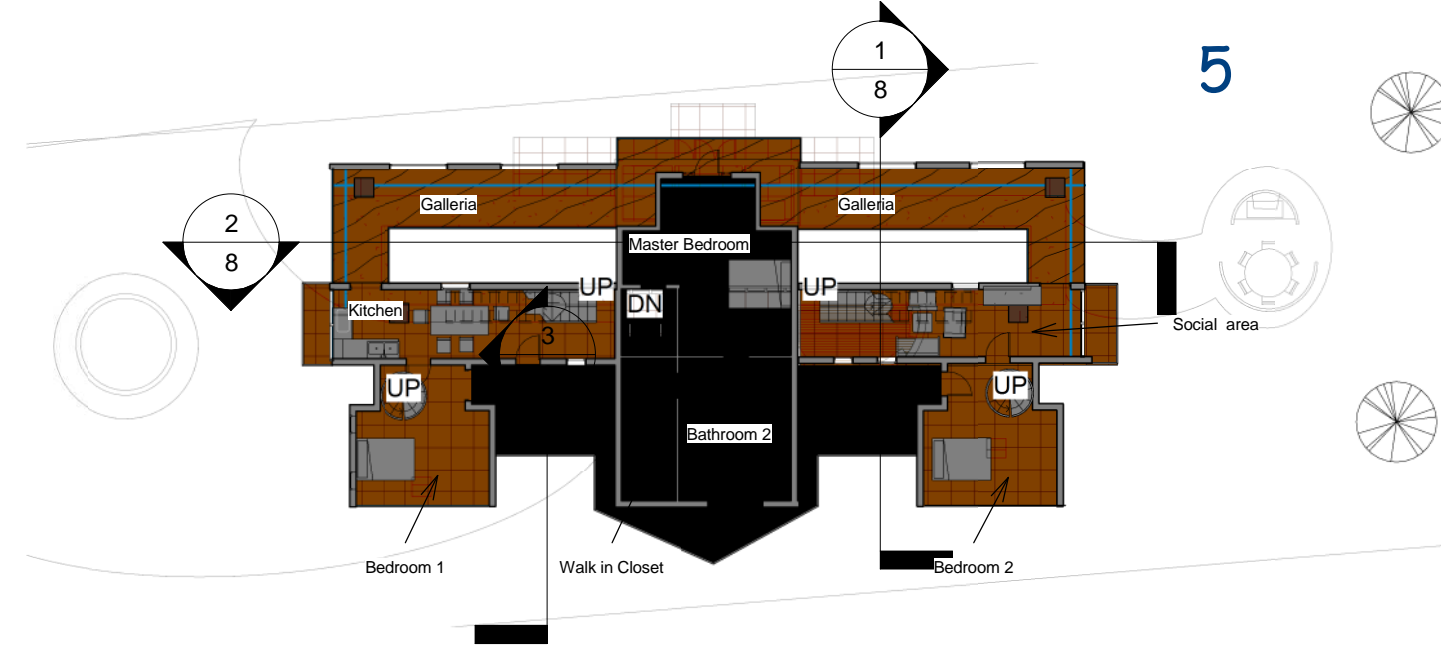
- 1 First I wanted to create a roof that was going to connect the block that is in between the galleria and the front part of the House.
- 2 It was a curved roof with a glass section in the middle.
- 3 Later I decided to shift down this roof 1 floor. I shortened the length and curve of it to make it simpler by just making the back curve of it and to keep the concept of the glass, I surrounded the area with glass walls. This two sections of the house are a fun part of the house. I placed a jacuzzi and a social area (pool table, tv, etc.) on the roof.
- 4 In addition you have a view and my client has a big platform as a balcony for inspiration with all these items for inspiration to do his work.

# 3D VIEWS

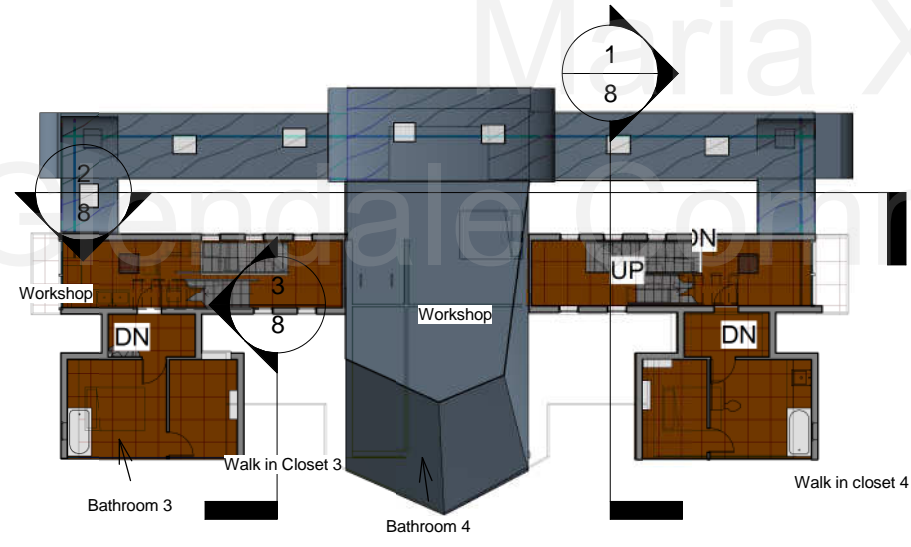




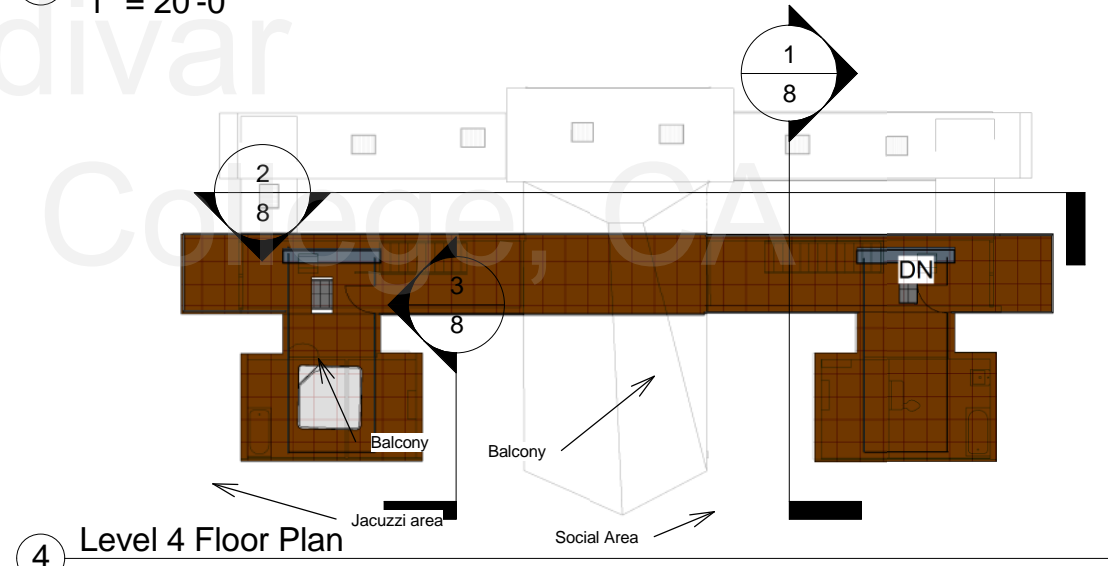
① Level 1 Floor Plan  
1" = 20'-0"



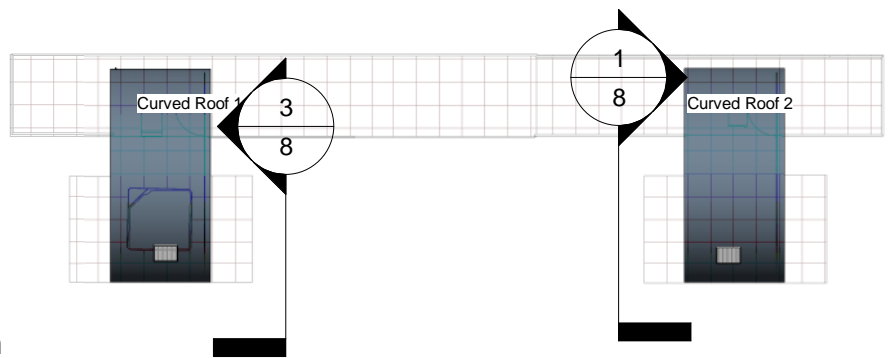
② Level 2 Floor Plan  
1" = 20'-0"



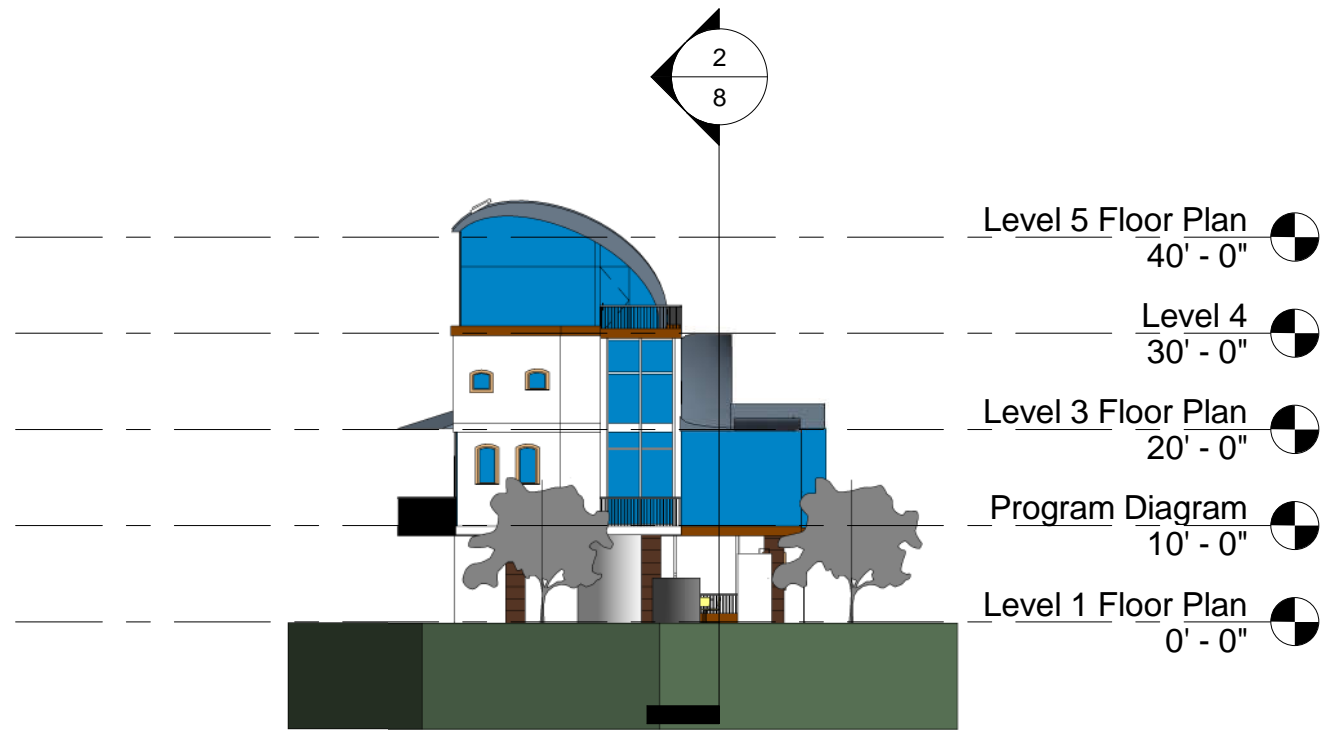
③ Level 3 Floor Plan  
1" = 20'-0"



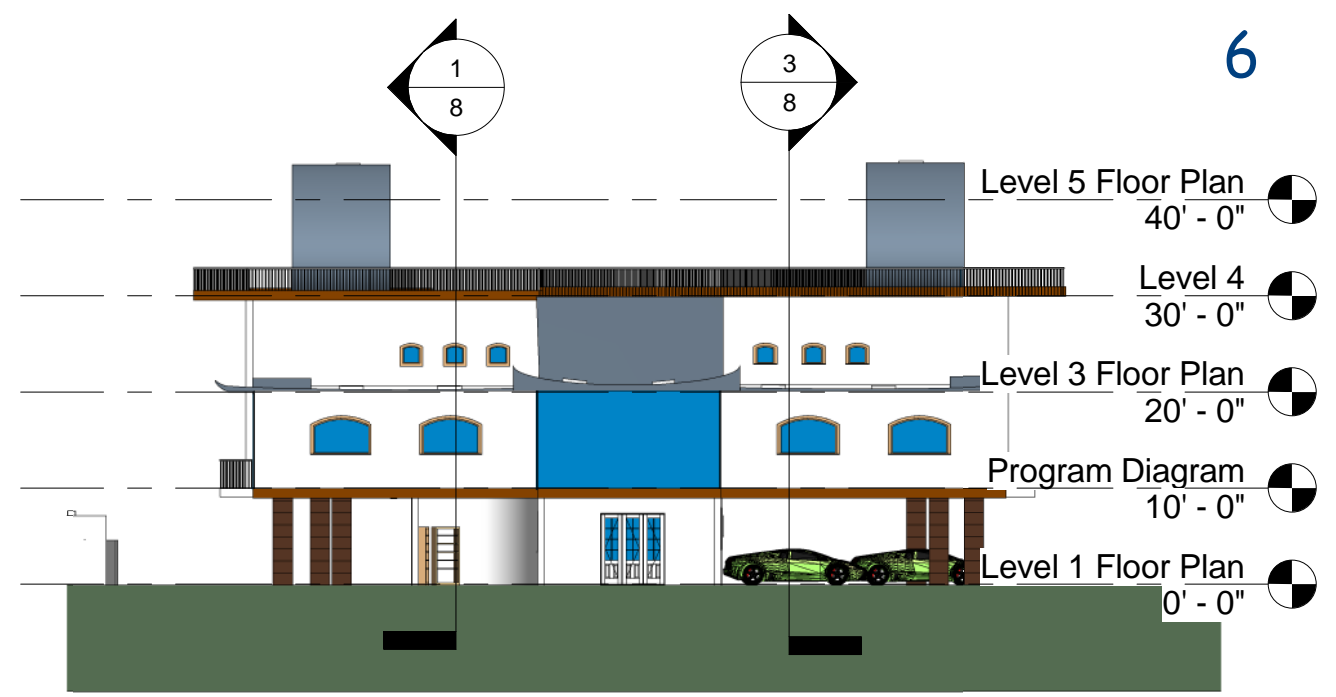
④ Level 4 Floor Plan  
1" = 20'-0"



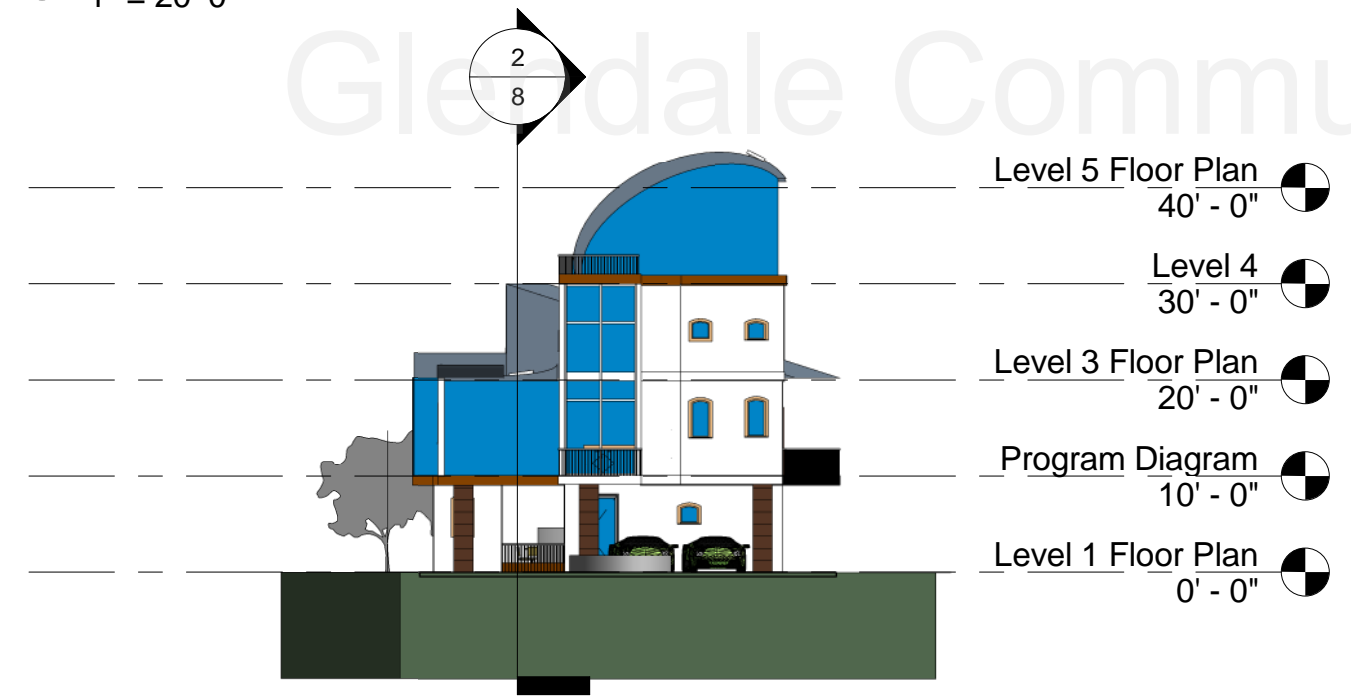
⑤ Level 5 Floor Plan  
1" = 20'-0"



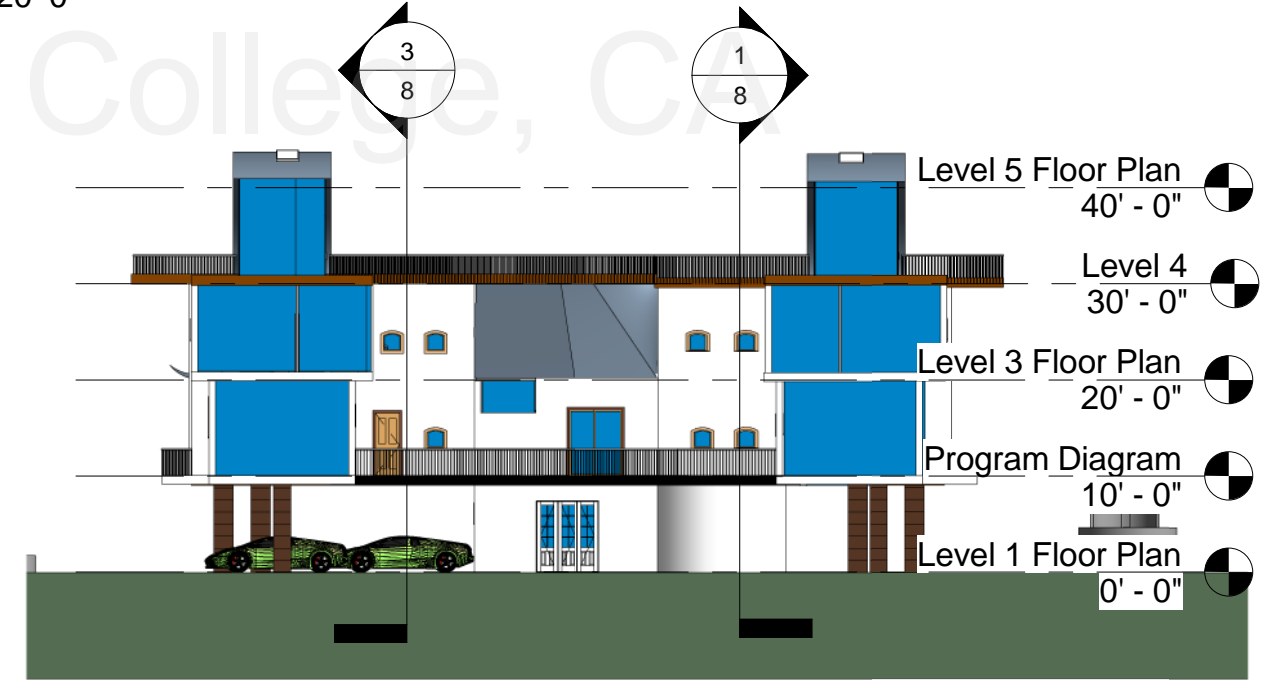
1 East Elevation  
1" = 20'-0"



3 North Elevation  
1" = 20'-0"

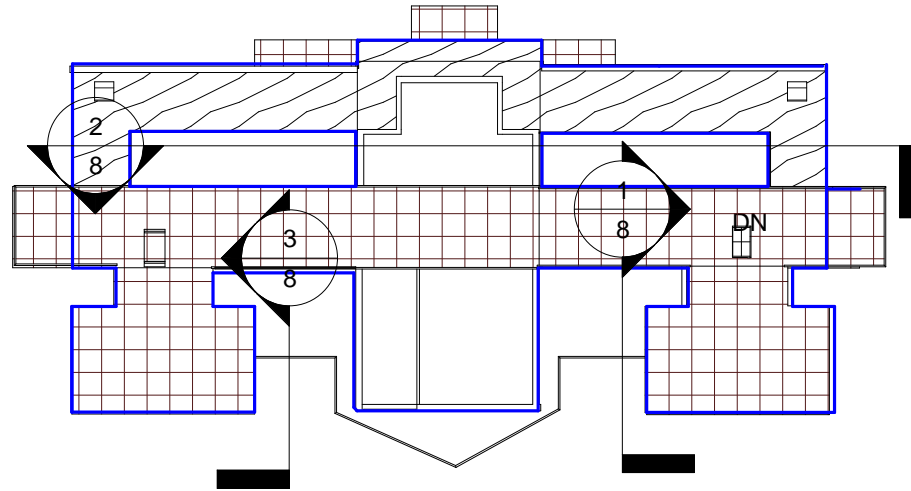


2 West Elevation  
1" = 20'-0"



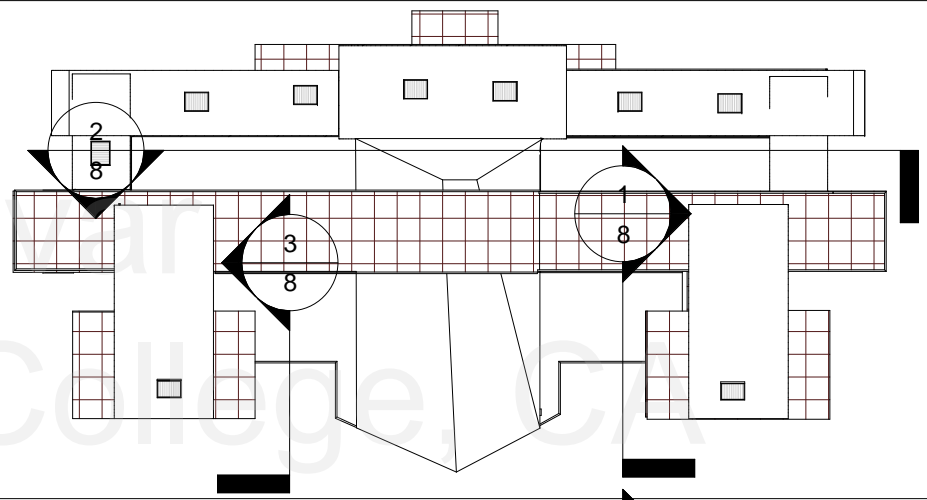
4 South Elevation  
1" = 20'-0"

Maria X. Landiyar  
Glendale Community College, CA

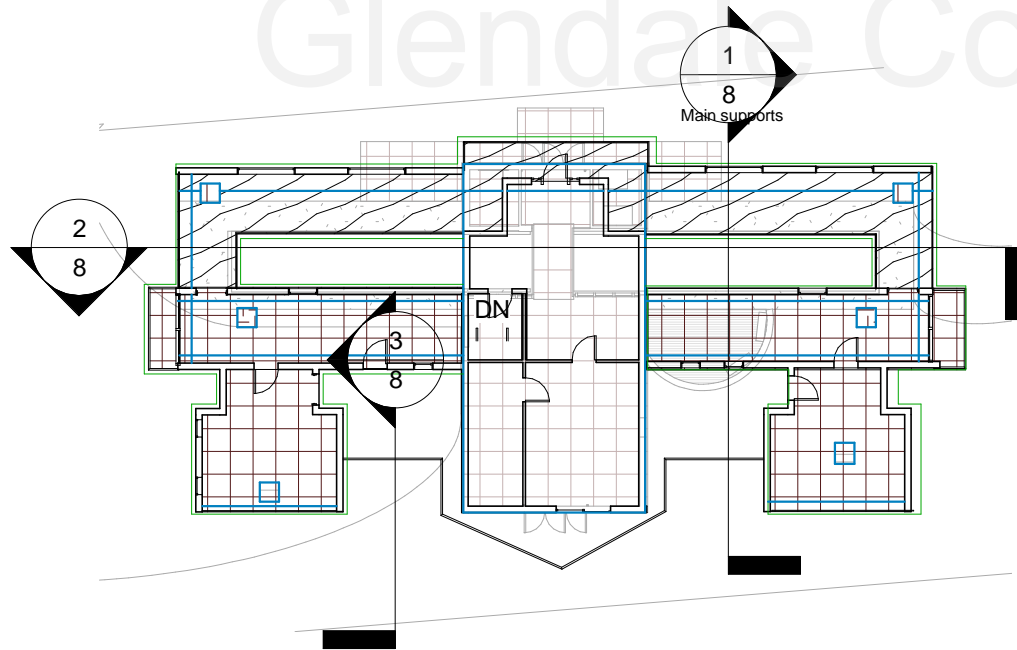


1 Enclosure Diagram  
1" = 20'-0"

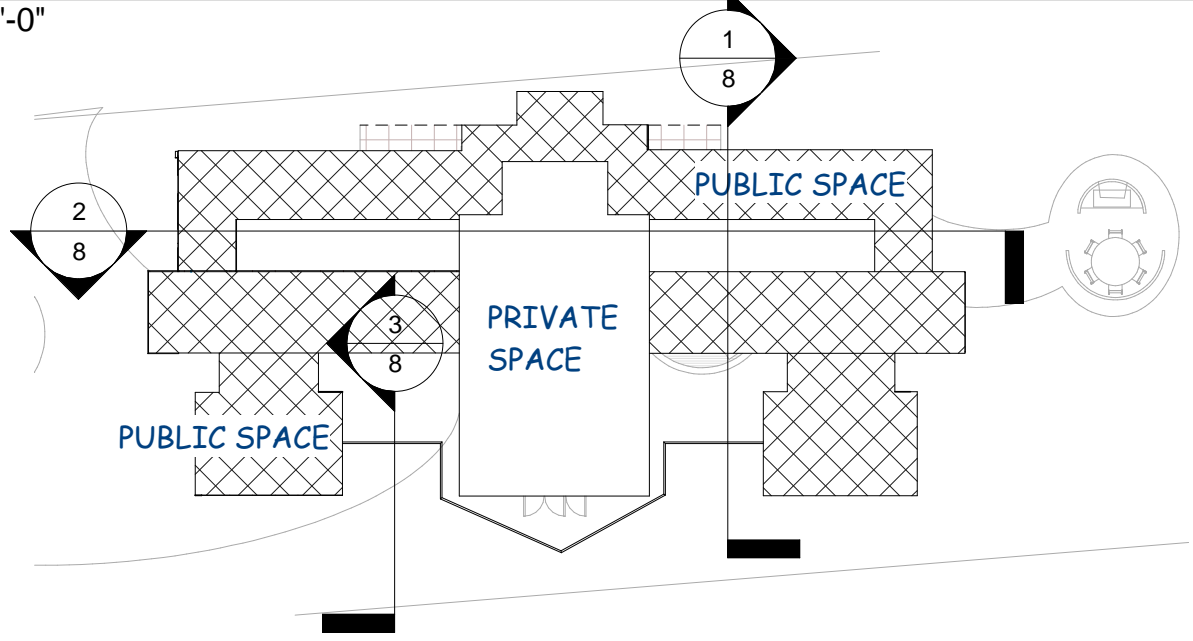
3 Circulation Diagram 1



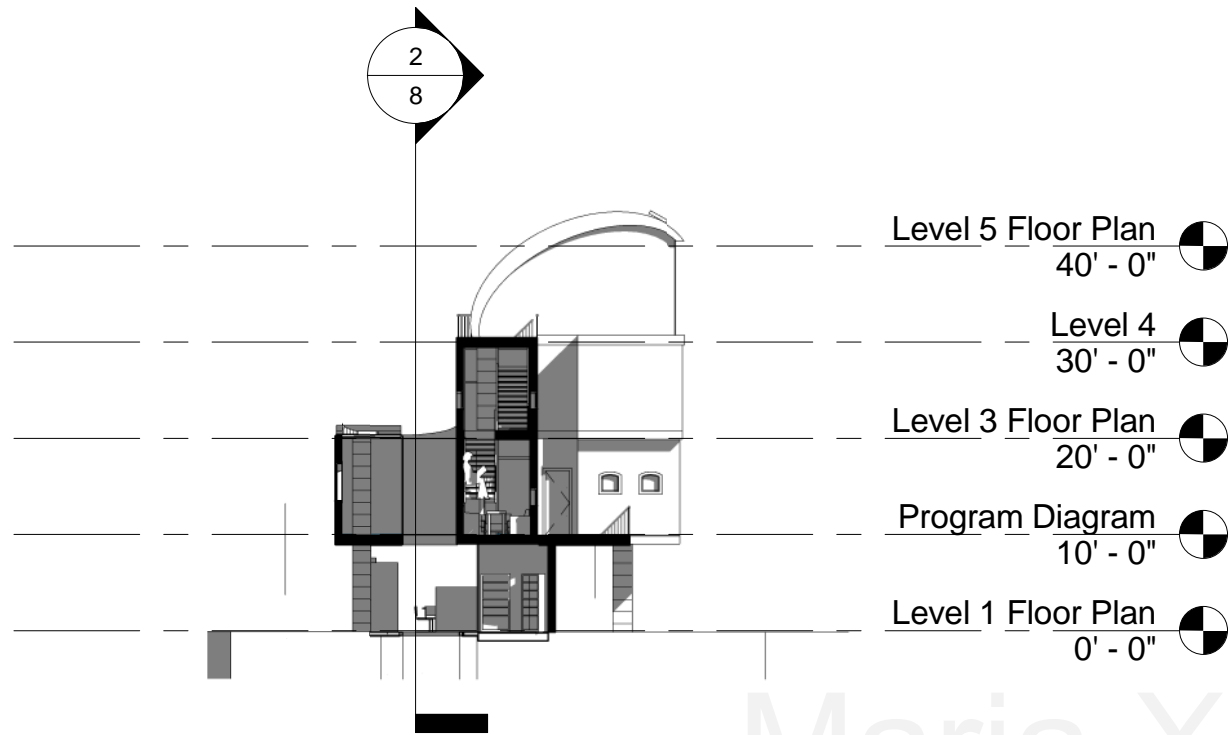
2 Parti Diagram  
1" = 20'-0"



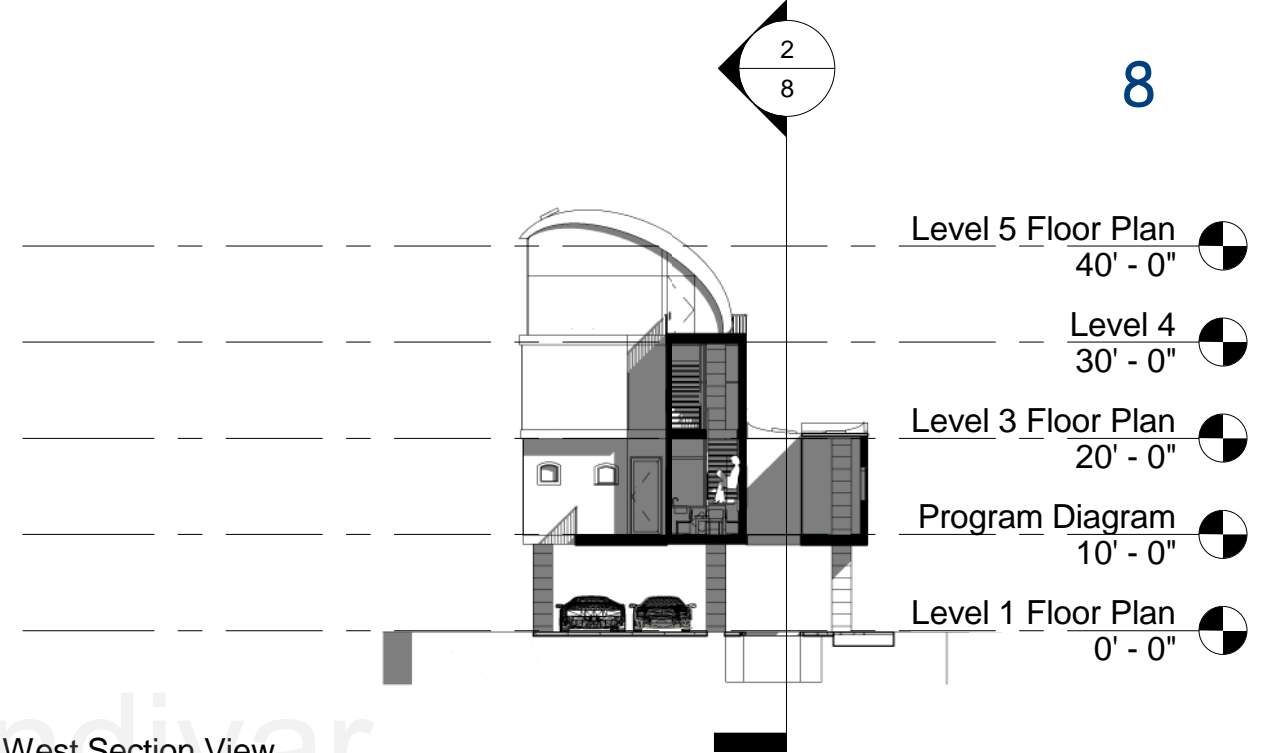
5 Structure Diagram  
1" = 20'-0"



4 Program Diagram  
1" = 20'-0"

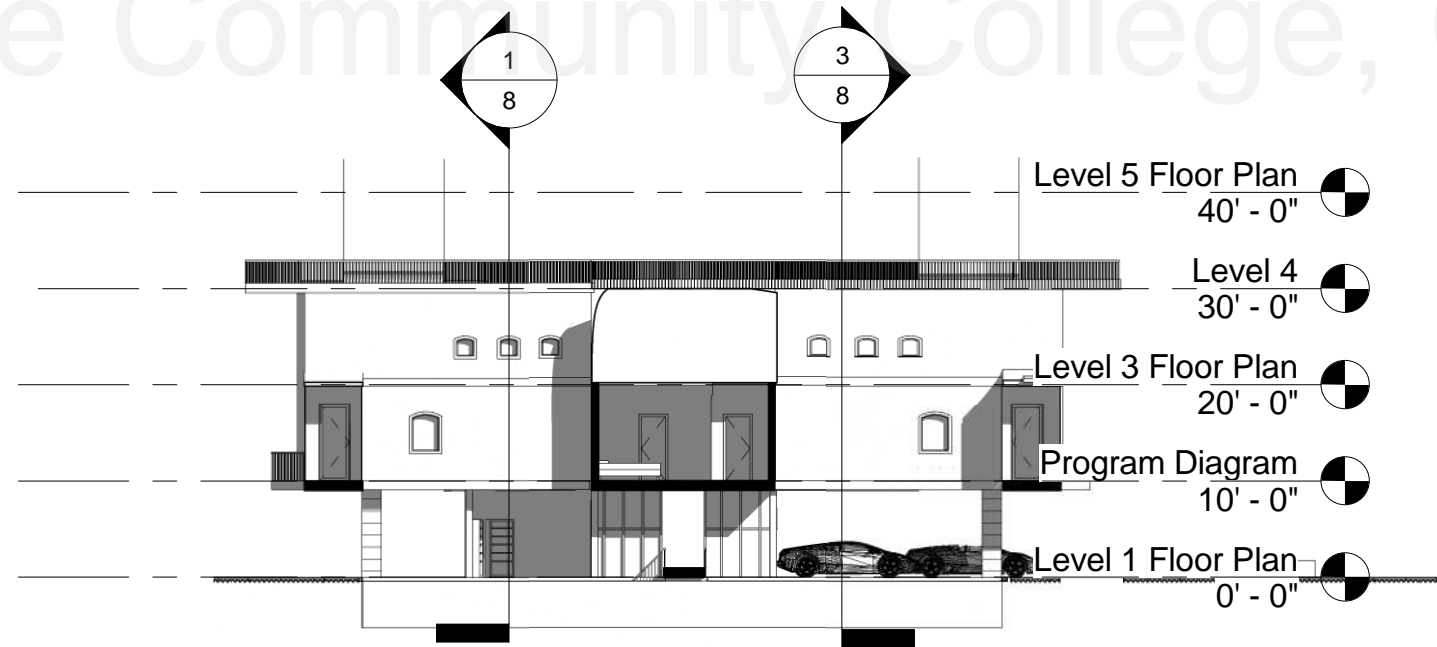


① East Section View  
1" = 20'-0"



③ West Section View  
1" = 20'-0"

Maria X. Landivar  
Glendale Community College, CA

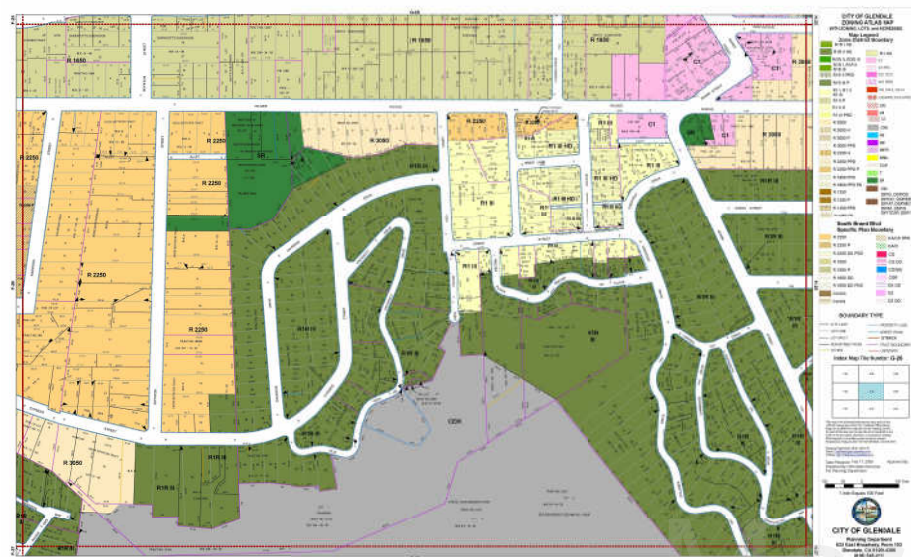


② South Section View  
1" = 20'-0"

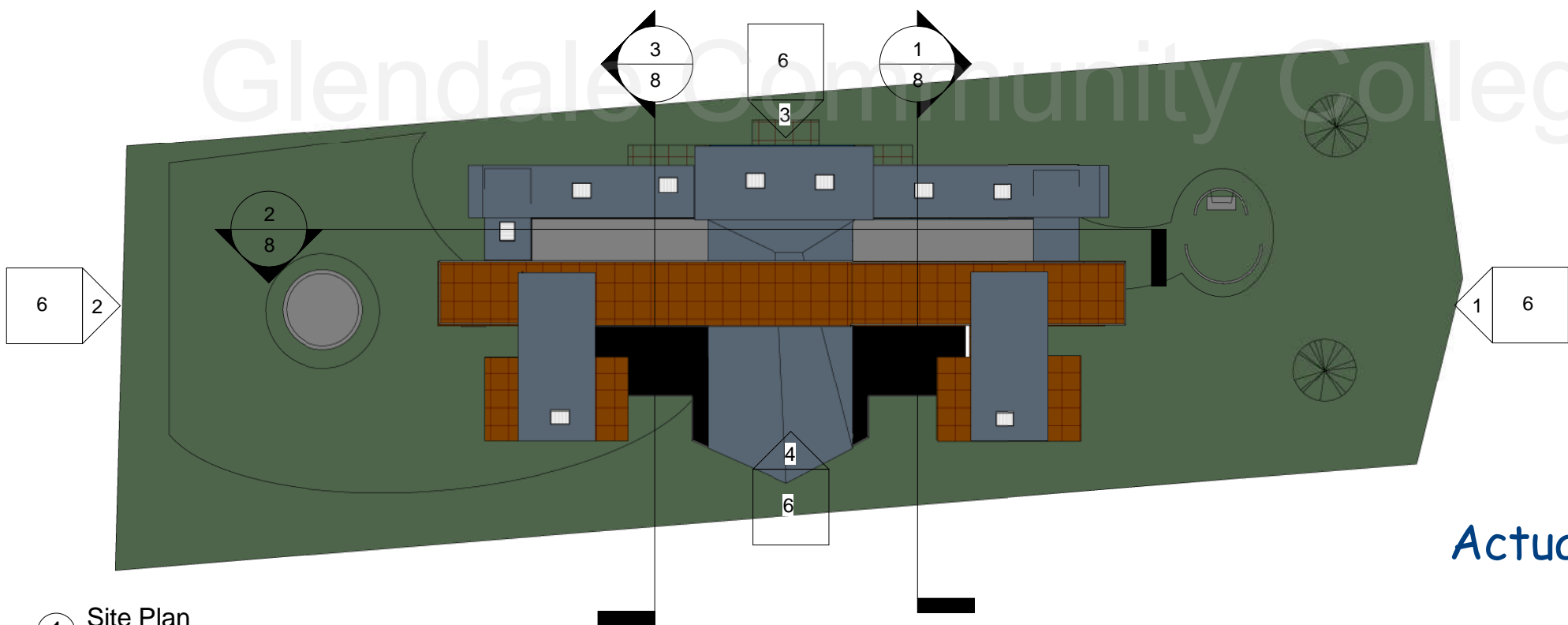
708 E. PALMER AVENUE - GLENDALE, CA



Site



Maria X. Lanco  
Glendale Community College, CA



Actual Site where House is located

1 Site Plan  
1" = 20'-0"

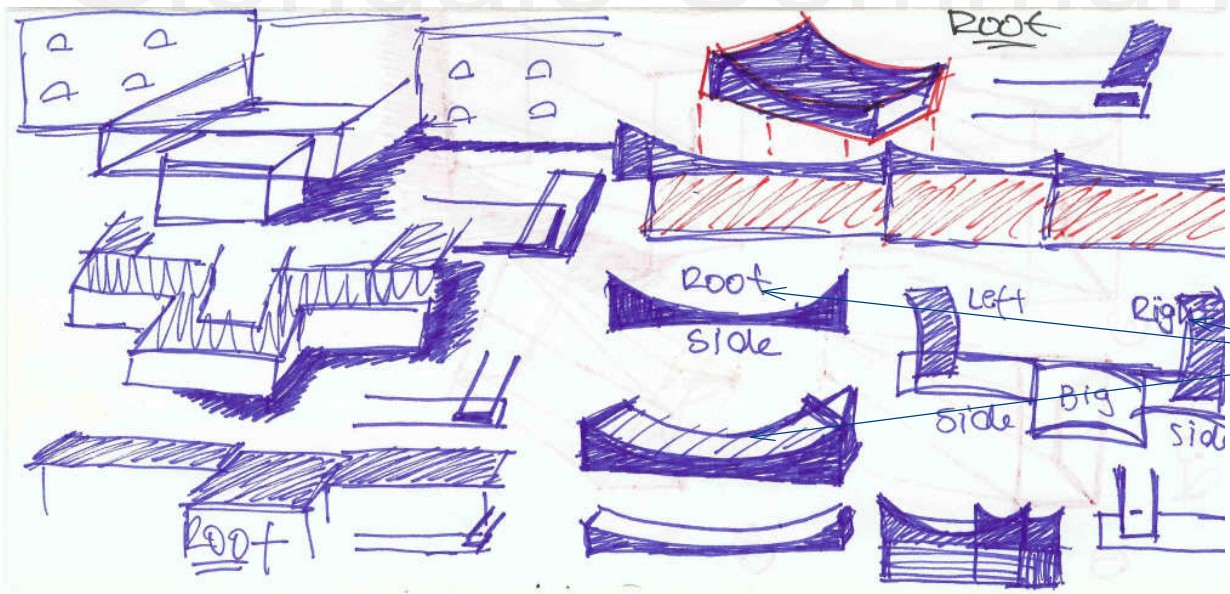


Rendering with different backgrounds

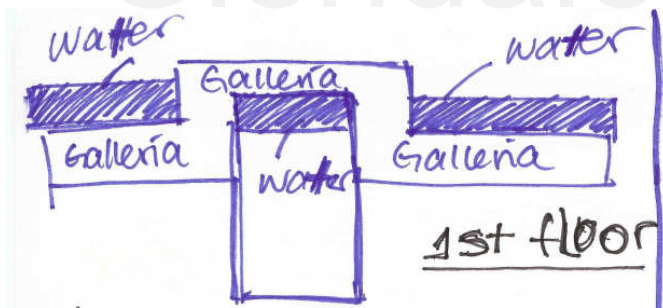
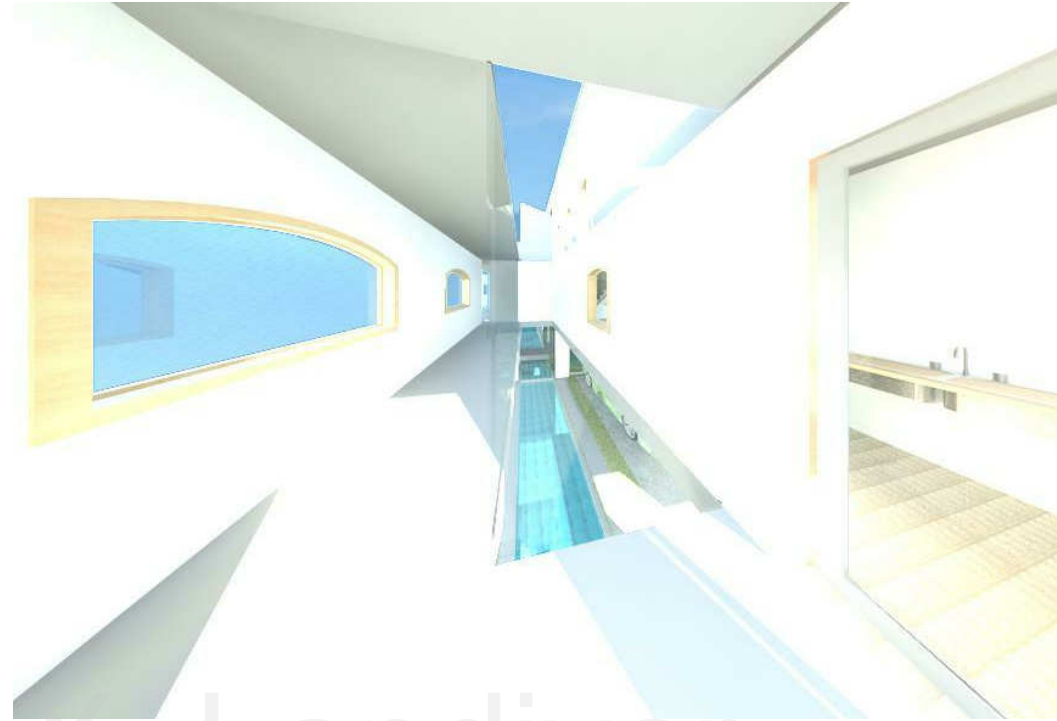
Northeast Isometric View

Northwest Isometric View

Southwest Isometric View



- I created 3 **roof-blocks** with a curved shape on the top of it and corners ending towards up. This is to keep the same concept of the roofs in this part of the House too.

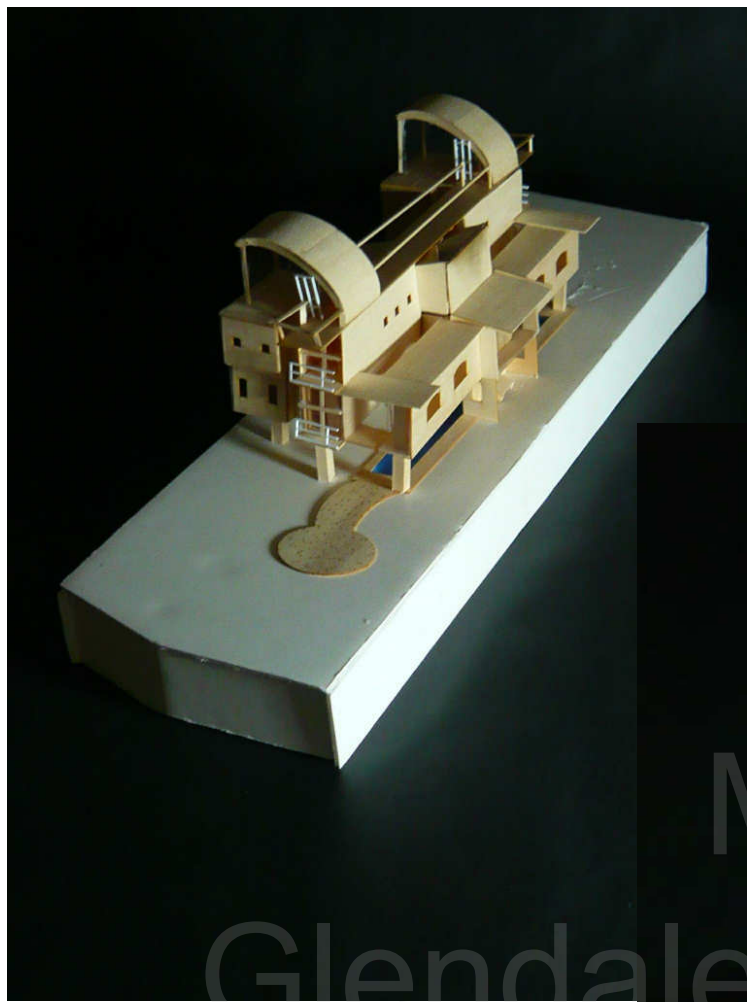


④ This pool is going through the house connecting the inside and the outside. The pool fits perfectly in the space that is between the galleria and the rest of the house.

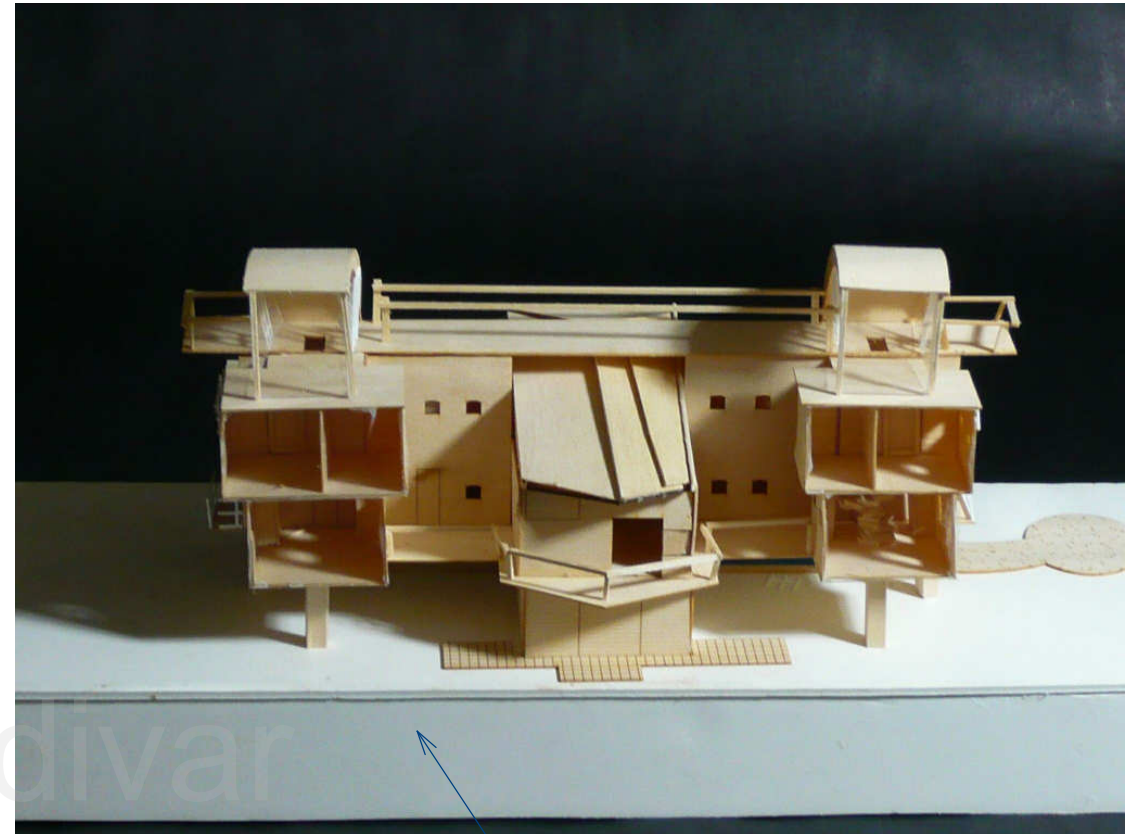
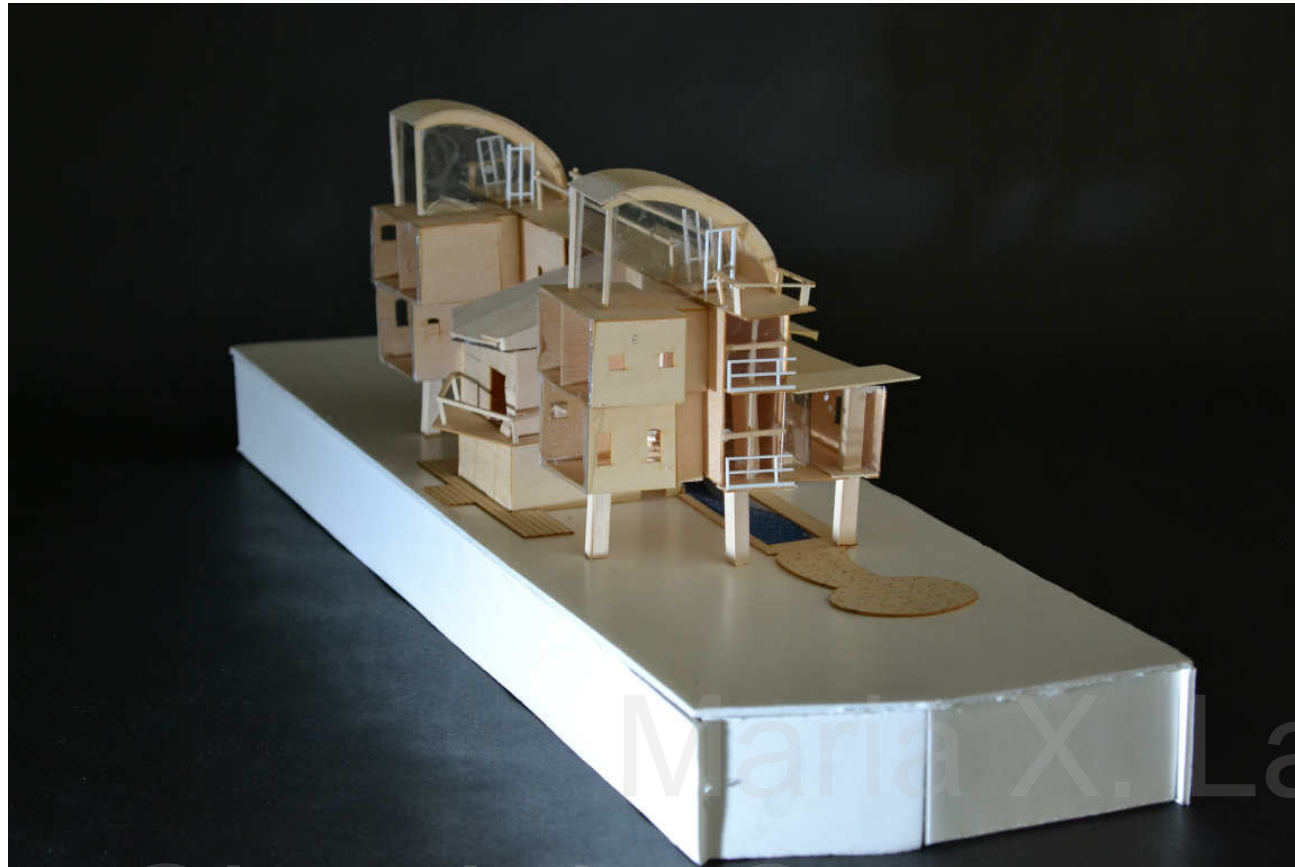
This gives the illusion that the plane is flying over water

- It also gives an impression of movement and interaction with the walls to make the galleria dynamic and at the same time, it supports the concept of the airplane since it is on the air.

# -Aerospace Engineer's 13 House Models



Maria X. Alvarez  
Glendale Community College, CA



Front View

East View

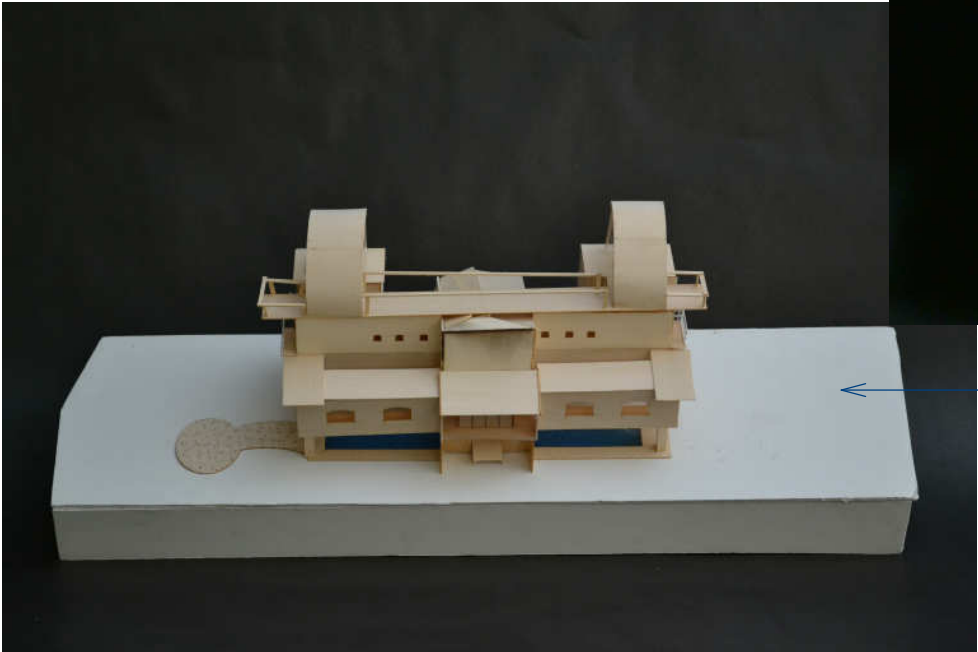
Maria X. Landivar  
Glendale Community College, CA

West View



Isometric View

South View

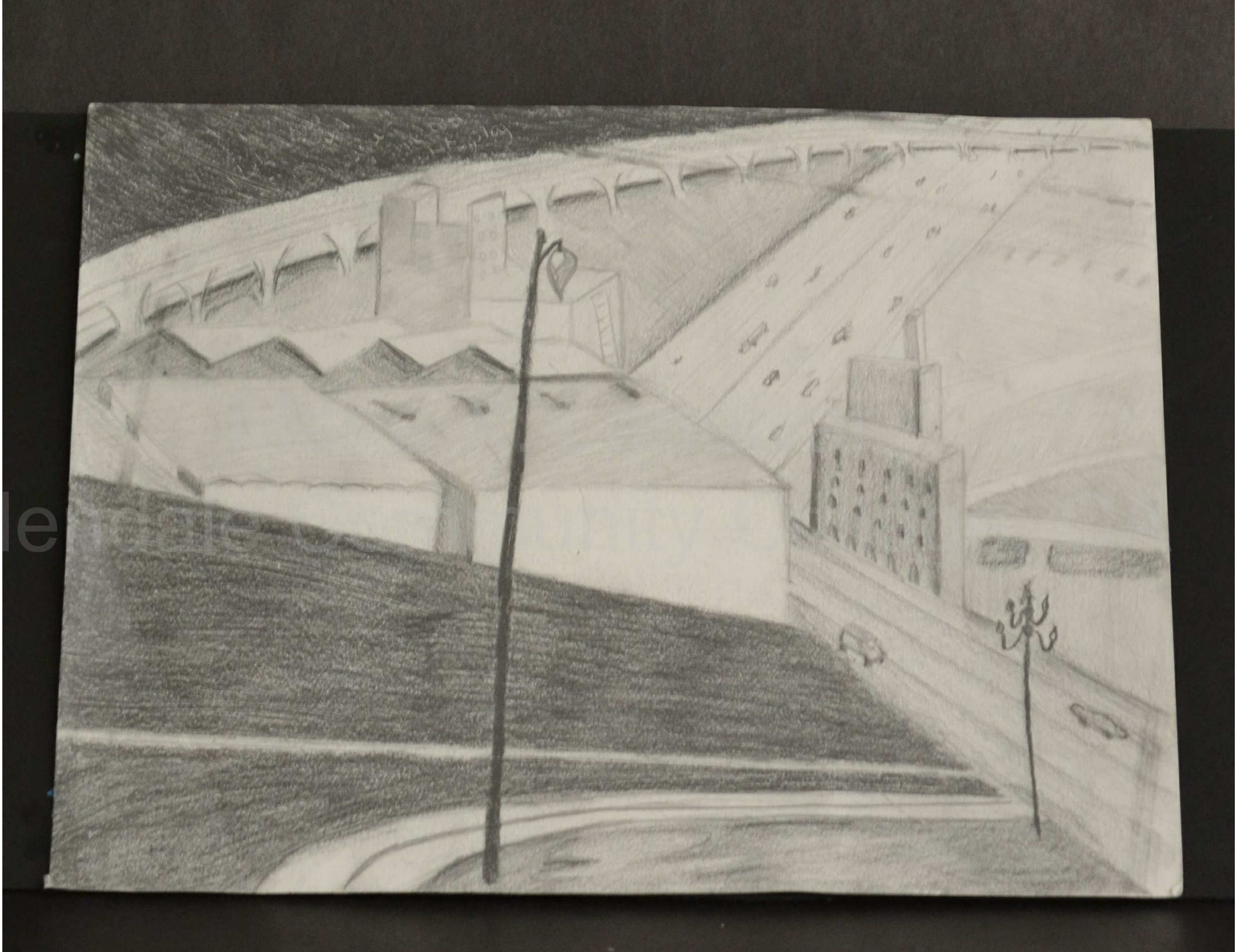


Maria X. Gardivar  
Glendale Community College, CA





Glenda A. Compton, Glendale, CA



Ge

# Outdoor Theater for Cultural & National Park 1A

This project is created for a city called Santa Cruz in the country of Bolivia. One of my main goals with this theater is to encourage people to practice the traditional Art established in the city since the time of the Colonization. During this time new ways of theater and music with instruments with traditional materias were created. A mixed of indian and Spanish ways were used in order to create Art in this city. I applied this concept to make my theater.



Jesuitics drawings and paintings in the walls I used in my design



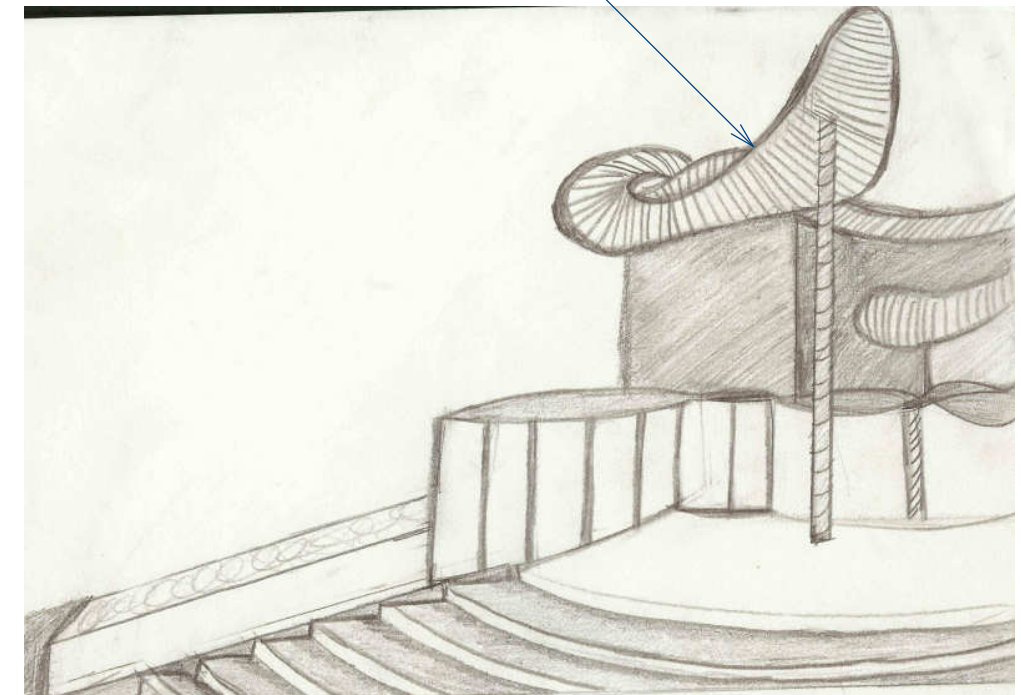
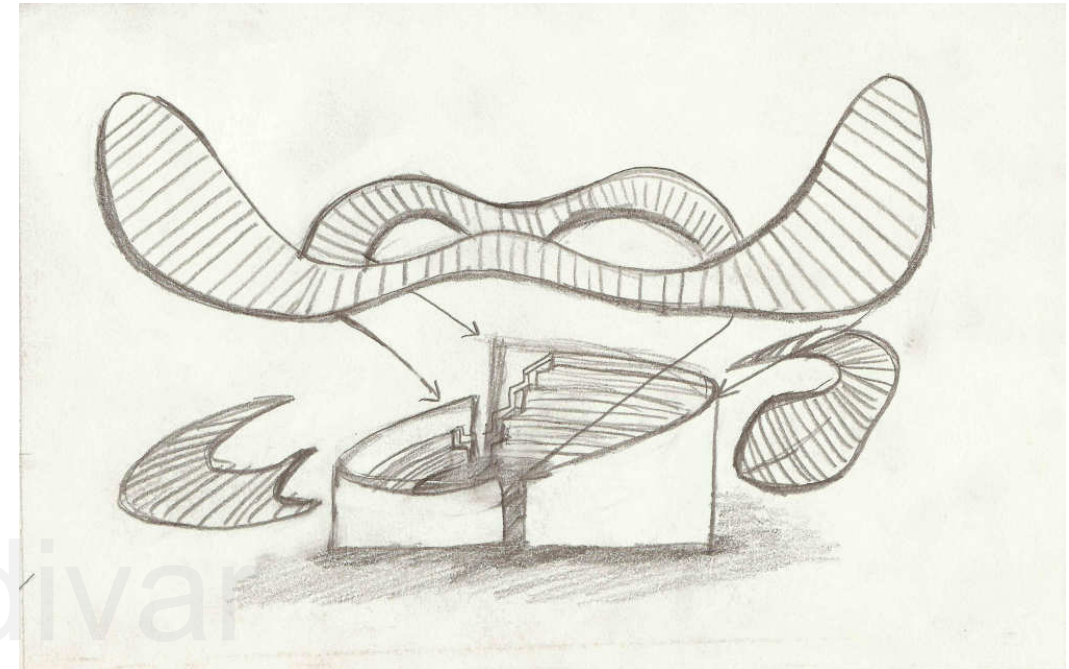
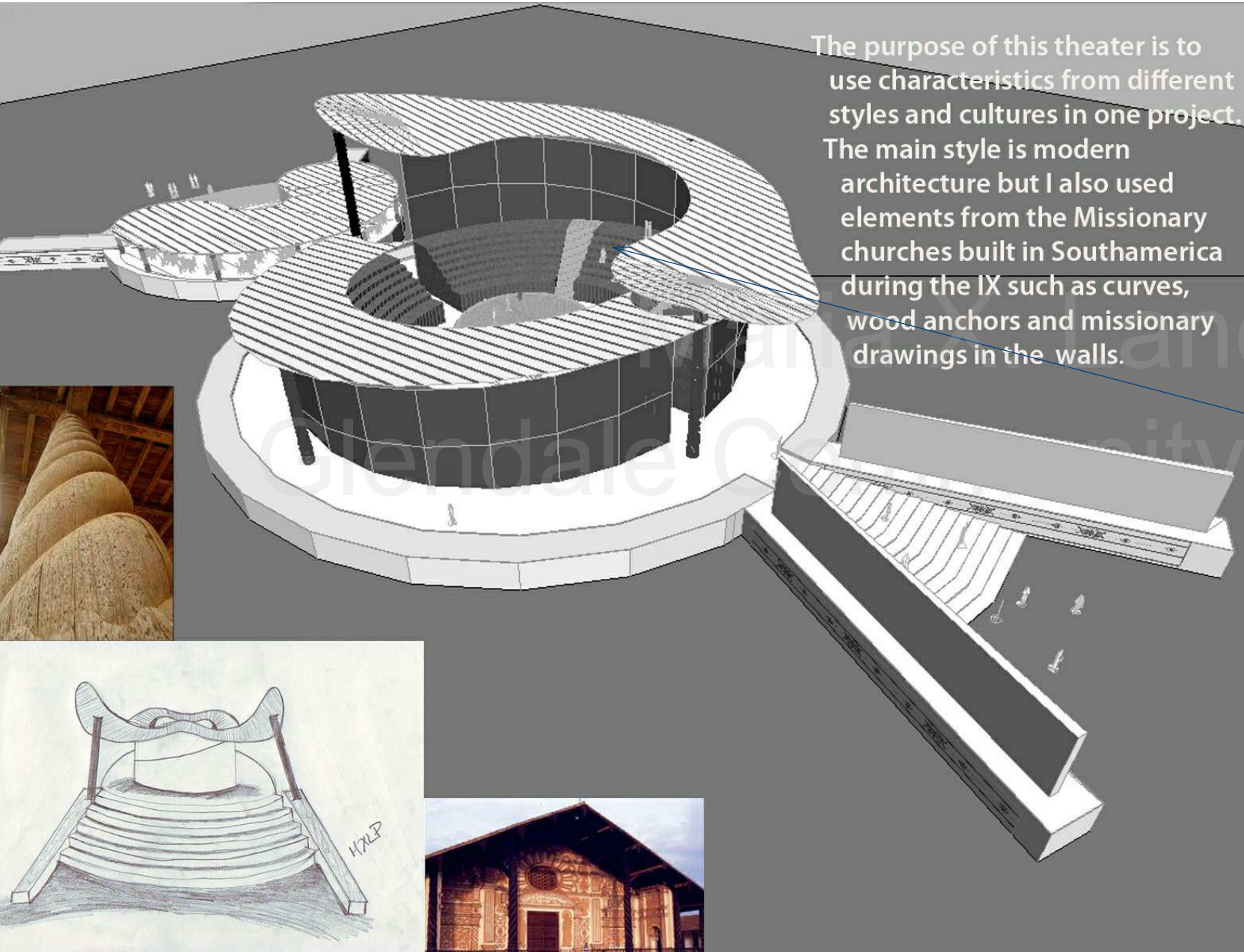
Wood anchors

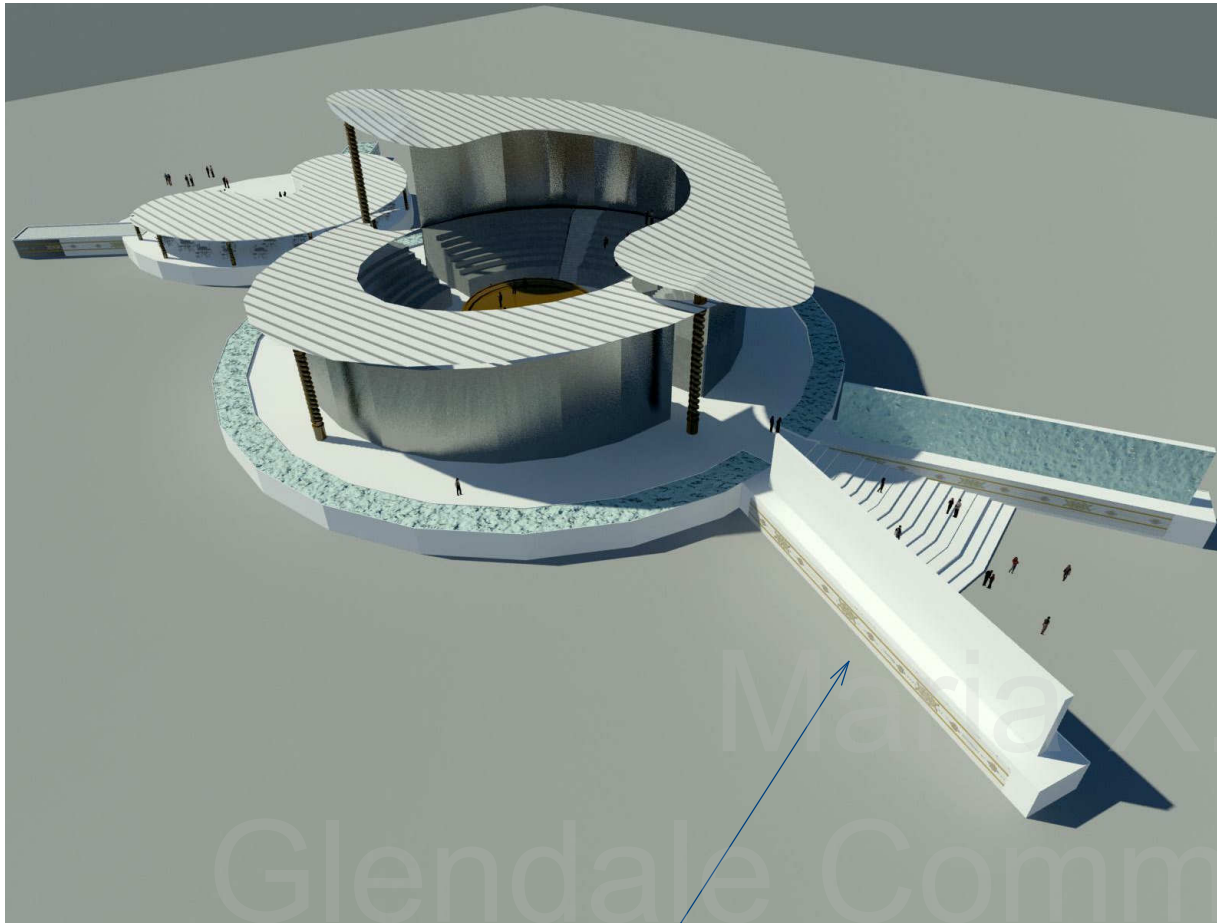


Jesuitics churches of Southamerica

-Therefore I wanted to make it modern but since I used characteristics and a styles used during the IX century for these Missionary churches, it encourages this type of Art and use of it.

1B



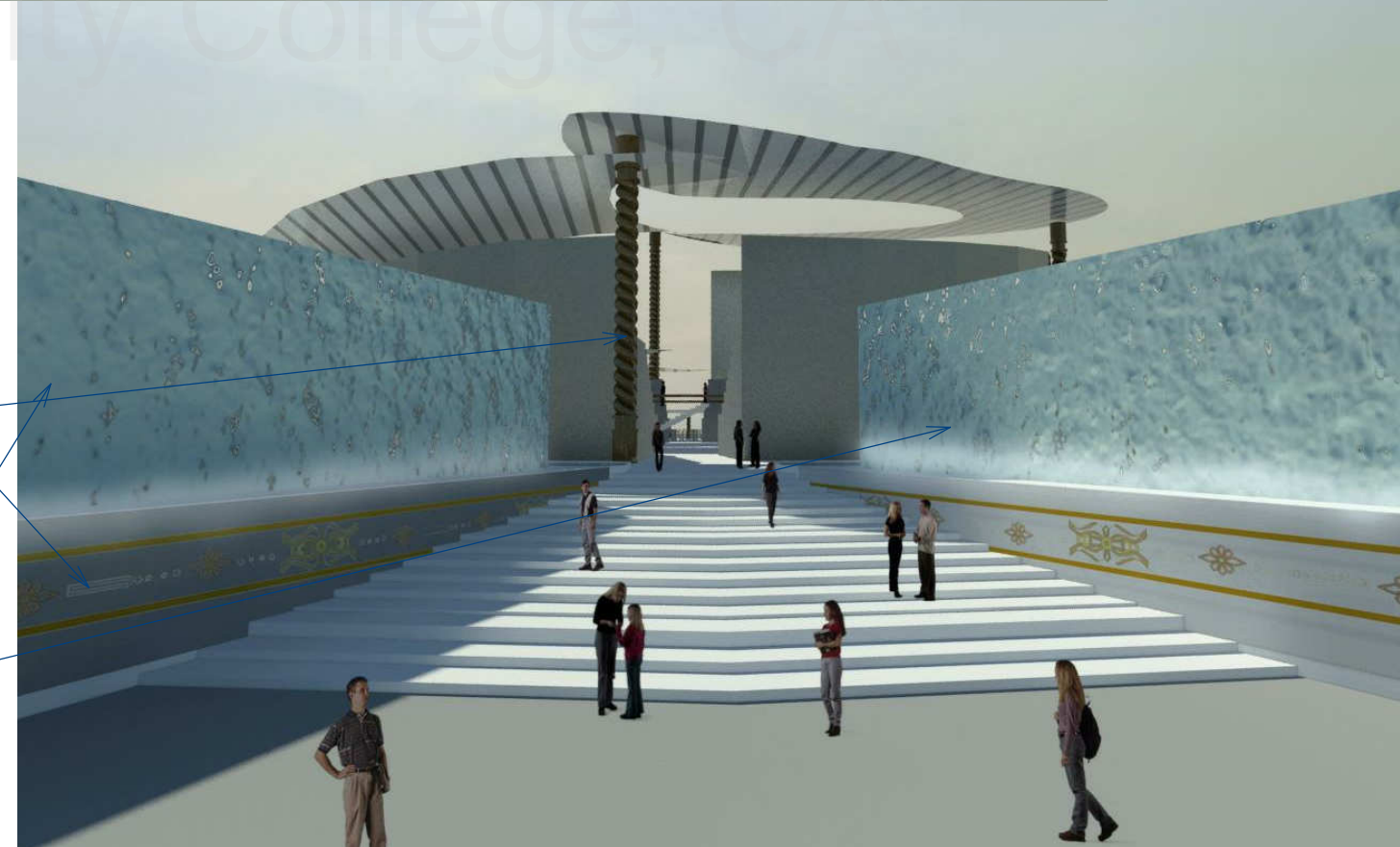


## Materials

Jesuitic Drawings shown in churches as a pattern around the walls of the theater

Wood anchors with stucco, metal water and the drawings are used to create the modern-traditional looking theater.

Entrance This is the main entrance to the theater. I put waterfalls in the lateral walls of the entrance in order to make it interesting while you are heading to see the show and before you walk in to the actual theater.

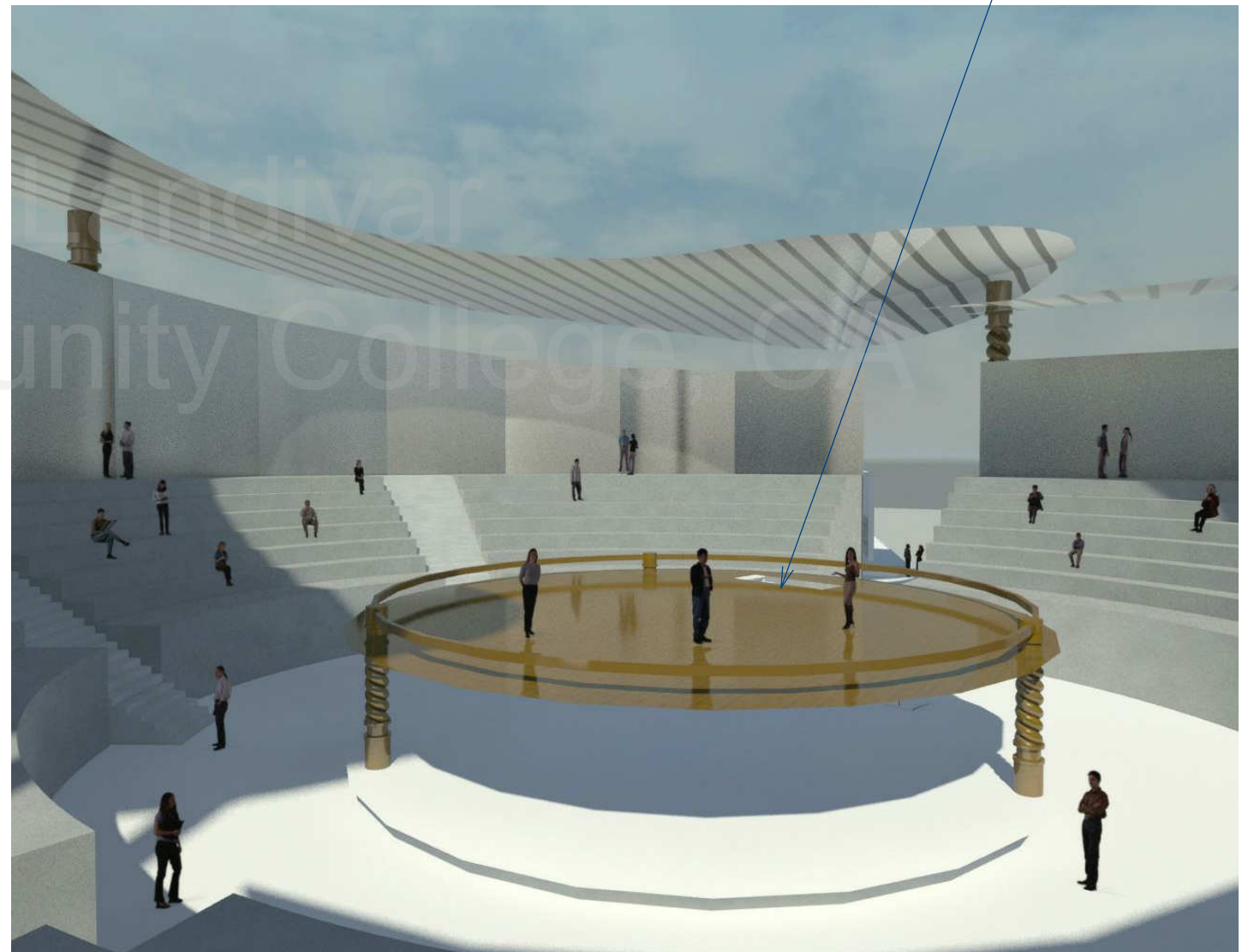
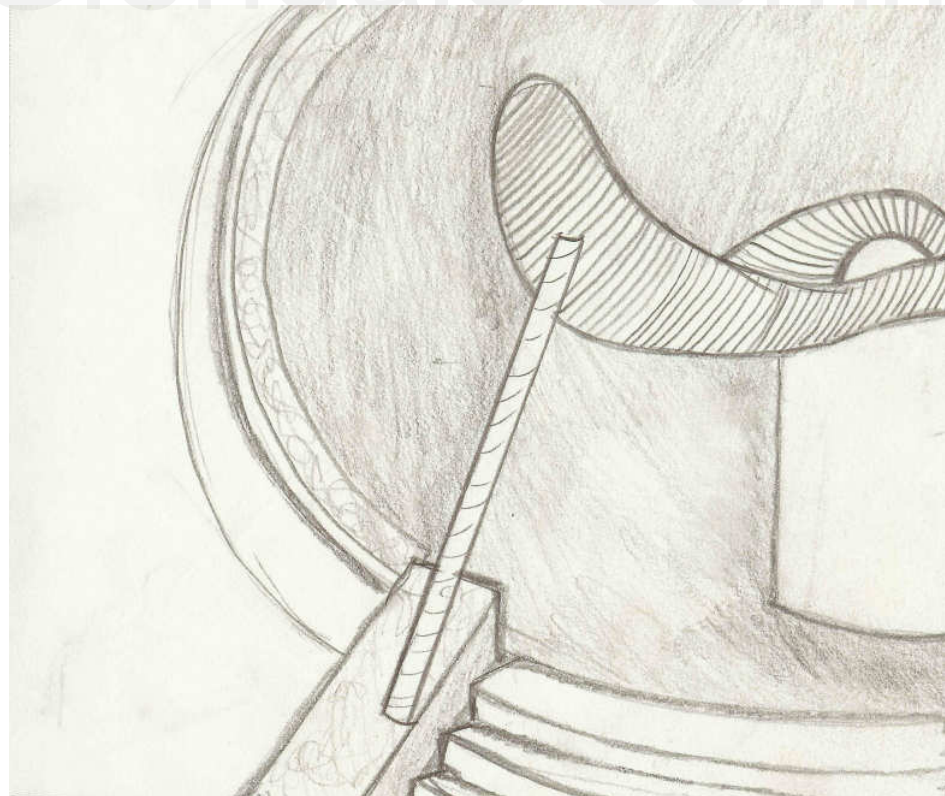


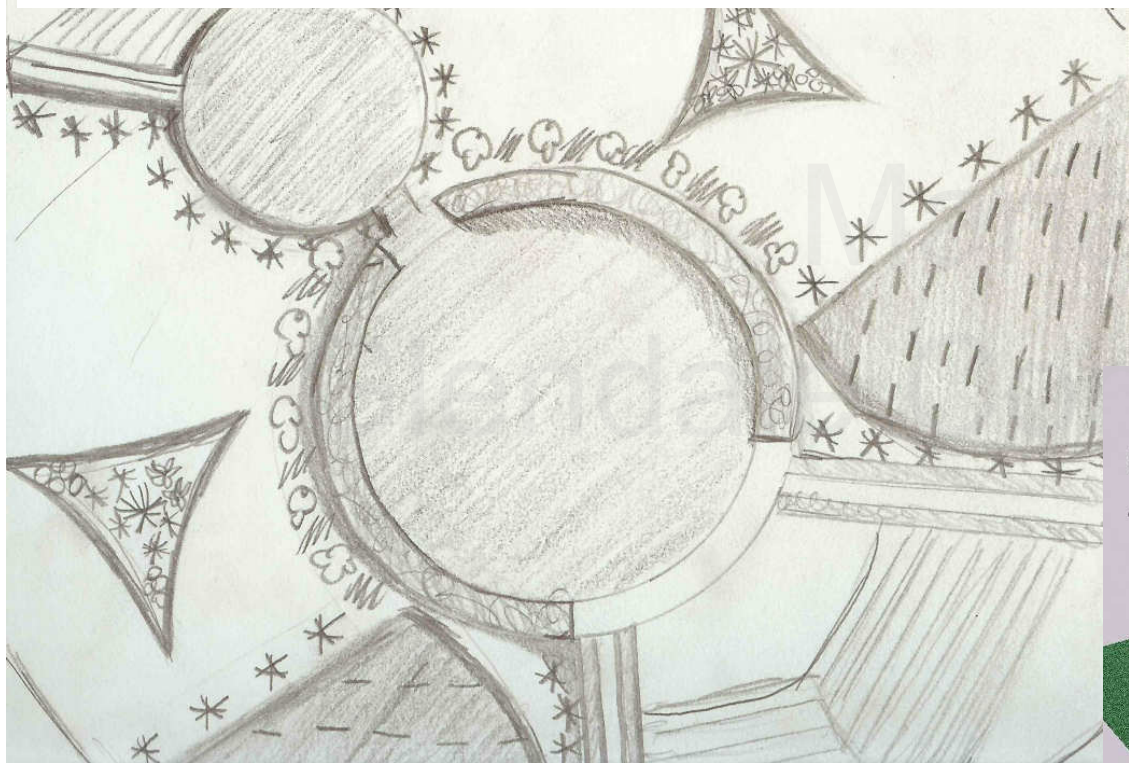
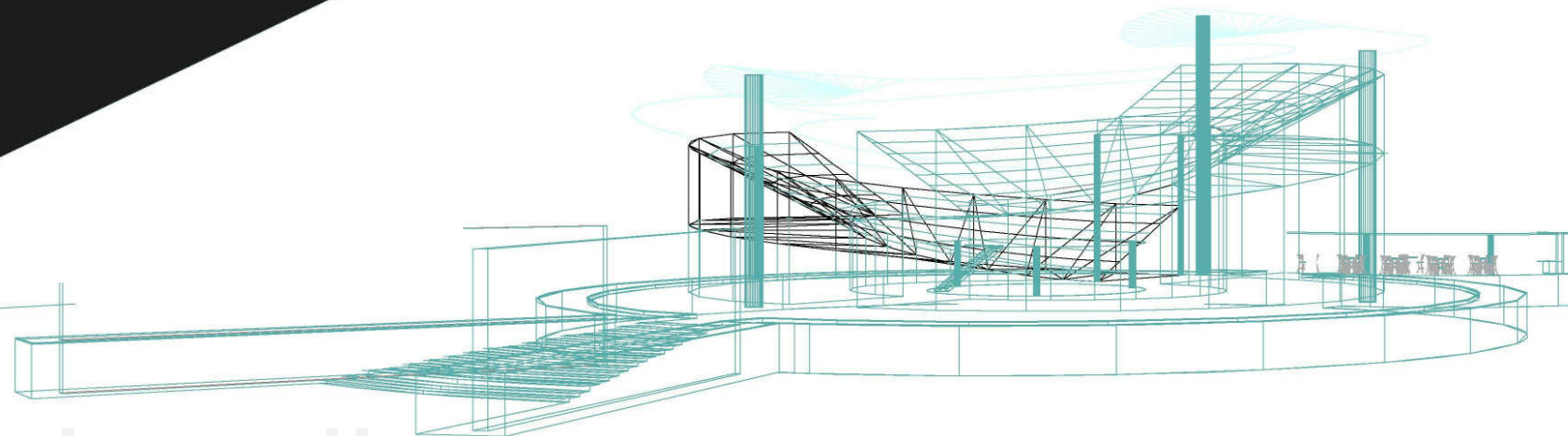
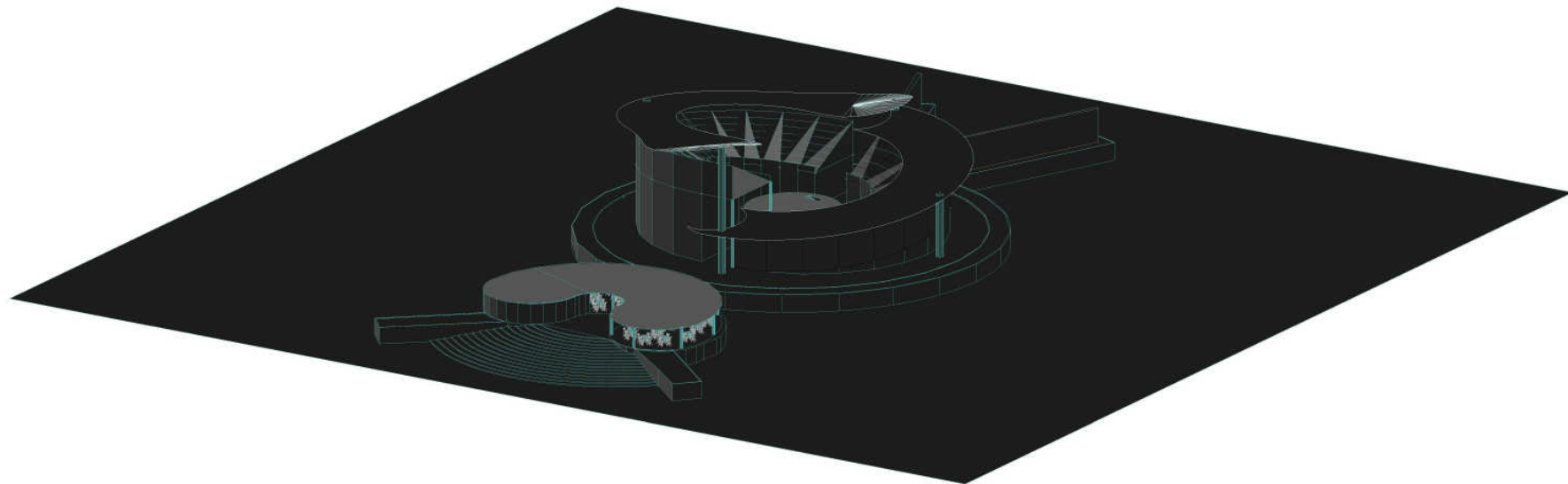
**Back** - I put a restaurant in the area enclosed by the walls in the back and also put a social area right next to it. This is supporting the theater concept by having also an after-show social area.

There are two water features next to each ending of the stairs supporting the social area and the following water pattern.

**Interior** -

The circular stage follows the drawings patterns, and its perfect for the type of music and contemporary theater performed. It has same wood anchors from the outside. Also one floor opening for the stairs that lead to the dressing rooms in the basement.





Completed on  
January 10th, 2010



Maria Ximena  
Landivar

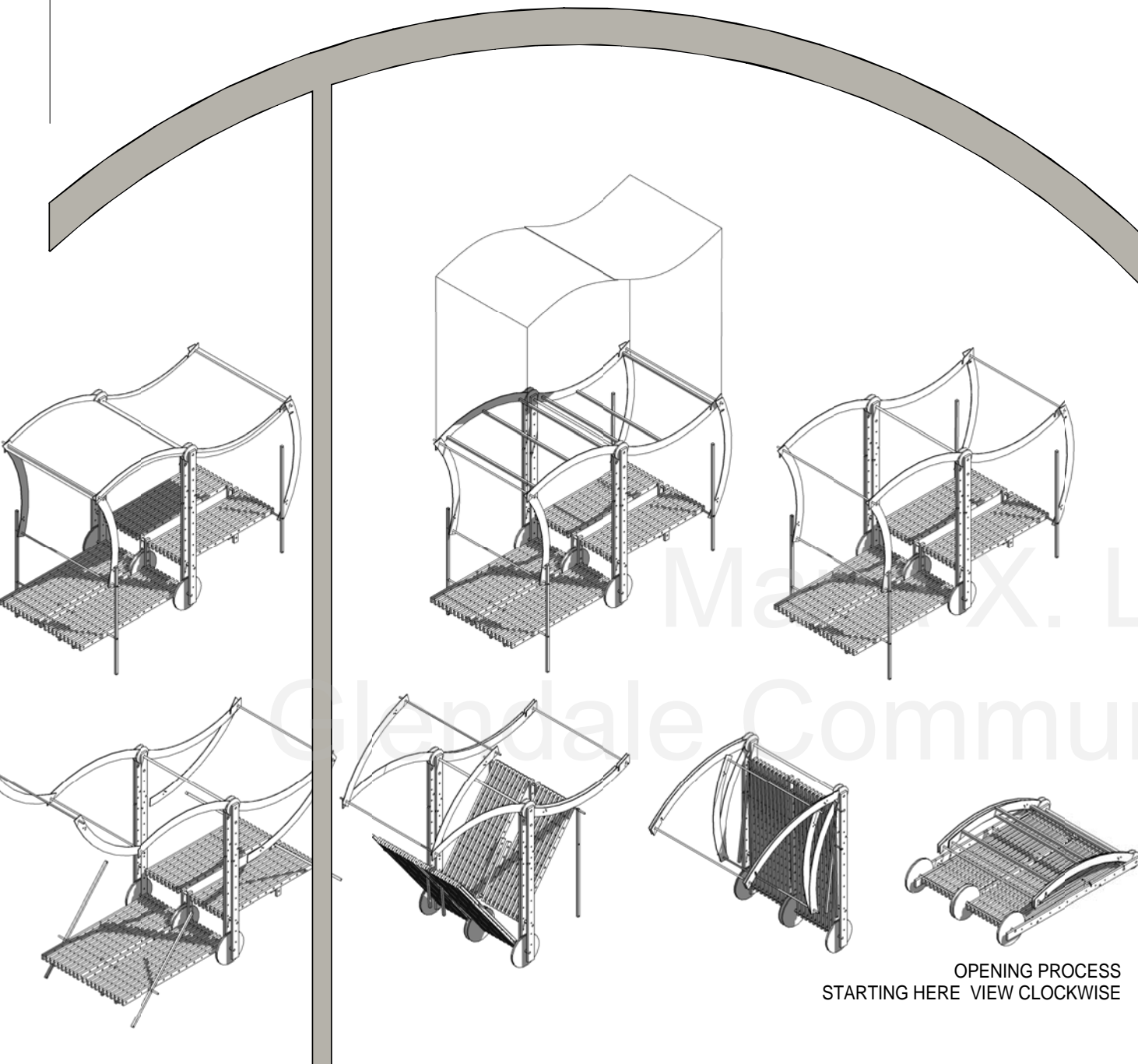
### SOCIAL PARAMETRICS

THE DESIGN CONCEPT IS TO CREATE A PORTABLE MACHINE MADE OUT OF MOVABLE PARTS WHICH WILL CREATE AND PROMOTE SPACES FOR SOCIAL INTERACTION BETWEEN THE USERS WITH THE HELP OF THE SKIN OF THE STRUCTURE.

THE PARAMETRIC COMPONENTS ARE THE SUPPORTING COLUMNS, ROOFS, ROOF SUPPORTS AND THE SPILT LEVEL FLOOR DECKS. IT IS A RELATIONSHIP BETWEEN DIMENSIONS AND VARIABLES TO GEOMETRY ORIENTATION IN SUCH A WAY THAT WHEN THE DIMENSIONS AND VARIABLES CHANGE, THE PARTS CHANGE THEIR ORIENTATION AS WELL, FOR EXAMPLE THE OPENING AND CLOSING MOVEMENT OF A SWISS ARMY KNIFE. A SPILT LEVEL DECK ACTS AS STRUCTURAL SKELETON TO ADAPT THE SLOPED LANDSCAPE. (THIS CONCEPT ALSO GOES ALONG WITH THE TWO ATTACHING PORTALS.) THE PORTALS WILL ACT AS ENTRANCES TO THE MAIN STRUCTURE.

THE MAIN FULLY OPENED STRUCTURE WILL FORM THREE DIFFERENT SPACES INSIDE THE STRUCTURE, THE UPPER DECK, LOWER DECK AND THE LOWER DECK PATIO.

THE MATERIAL OF THE ROOF AND WALLS ARE FORMING AND INSULATING AS THE SKINS OF THE STRUCTURE. THE CHOICE OF MATERIAL - COLORFUL BUBBLE WRAP SKIN IS TO STIMULATE THE USER TO POP THE BUBBLES. THE POPPING SOUND ACTS AS A METAPHOR OF THE SOUND OF FIREWORKS AND IT RELATES TO THE CELEBRATION OF A SOCIAL EVENT.



OPENING PROCESS  
STARTING HERE VIEW CLOCKWISE



STUDY MODEL



OPENING AND CLOSING MOVEMENT OF A SWISS ARMY KNIFE  
ABOVE IMAGE IS BOUGHT TO YOU REFERENCED BY COOLEST GADGETS



### UPPER DECK



BUBBLE WRAP AS A SOCIAL AND PLAYFUL TOOL.  
ABOVE IMAGE IS BOUGHT TO YOU REFERENCED BY ORBLE



.ABOVE IMAGE IS BOUGHT TO YOU REFERENCED BY MATT AND SARAH

**PATIO**

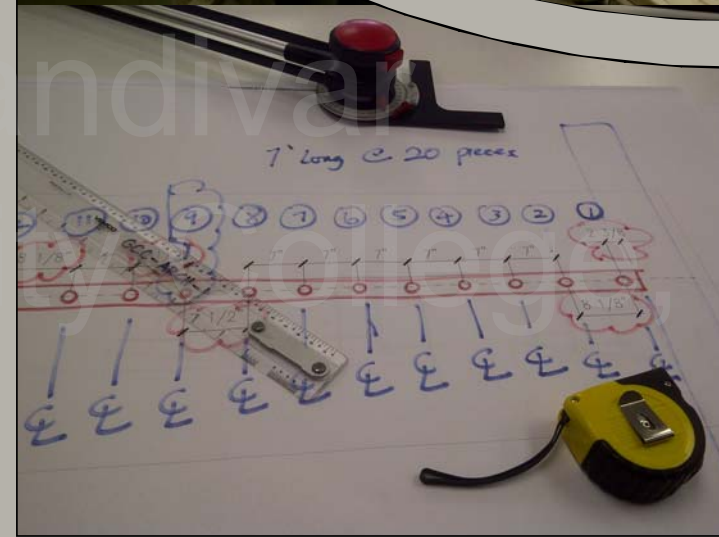
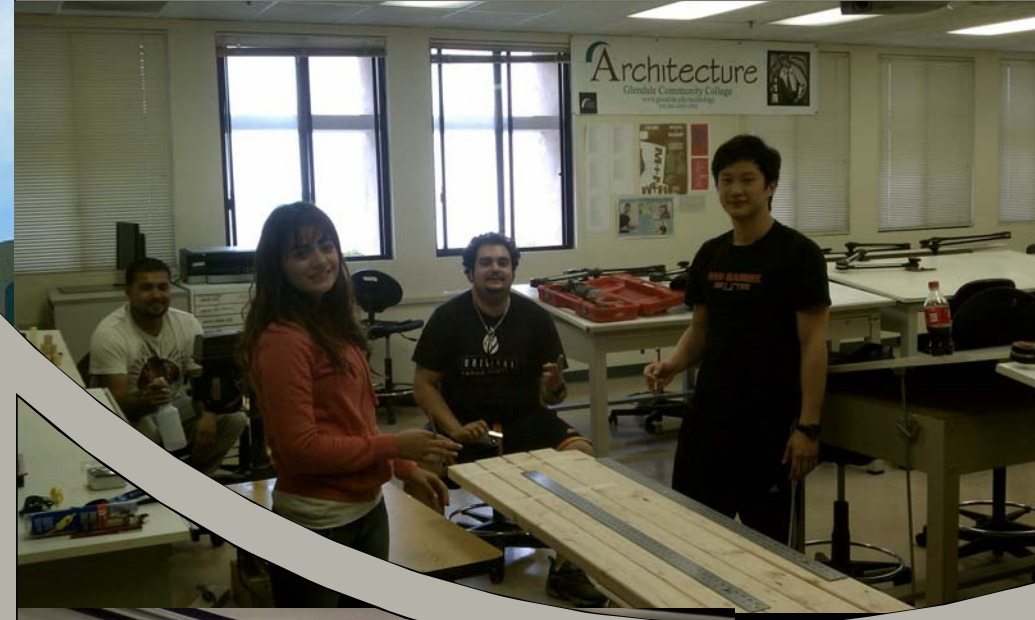
**LOWER DECK**

#### GLENDALE COMMUNITY COLLEGE TEAM

GORDON AU  
RONALD HERNANDEZ  
MARIA X. LANDIVAR  
ARVIN SHIRINYANS  
ARMEN SARKISIAN

# DESIGN VILLAGE 2011

CALPOLY SAN LUIS OBISPO  
SOCIAL PARAMETRICS



CA



**GLENDALE COMMUNITY COLLEGE TEAM**  
GORDON AU  
RONALD HERNANDEZ  
MARIA X. LANDIVAR  
ARVIN SHIRINYANS  
ARMEN SARKISIAN

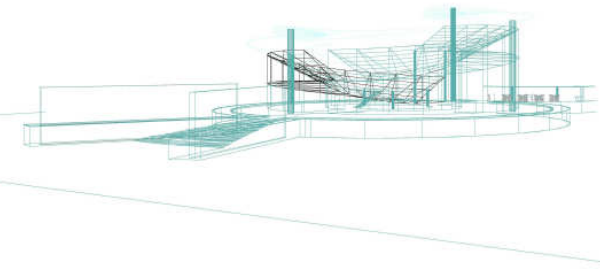


FEATURING

MARIA X. LANDIVAR

ARCHITECTURE PORTFOLIO

2011



Maria X. Landivar

Glendale Community College, CA

Programs:

AUTODESK REVIT

AUTOCAD

3D MAX RENDER

THANK YOU!!!!!!!!!!!!!!!!!!!!

